

Brass manifold combination adapter fitting adapters

Project Information

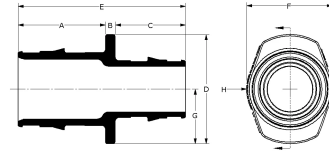
Job name:	Location:
Engineer:	Date submitted:
Contractor:	Submitted by:
Manufacturer's representative:	Approved by:

Technical data

Material	Brass
End type 1	ISO 228-G 1-1/4"
Temp/pressure ratings	73 °F (23 °C) at 160 psi (11 bar) 180 °F (82 °C) at 100 psi (6.9 bar) 200 °F (93 °C) at 80 psi (5.5 bar)
Prop 65 label required?	Yes

Product Information and application use

The Uponor Brass Manifold Combination Adapter/Fitting Adapter connects Uponor TruFLOW™ and Engineered Polymer (EP) Heating Manifolds to copper connections in radiant heating and cooling applications.



Part name	Part no.	A [Inch]	B [Inch]	C [Inch]	D [Inch]	E [Inch]	F [Inch]	G [Inch]	H [Inch]	Weight per UOM [lbs/UOM]
Brass Manifold Adapter, R32 x 3/4" Adapter or 1" Fitting Adapter	A4143210	1	0.35	0.635	1.96	1.985	1.75	0.98	0.875	0.62
Brass Manifold Adapter, R32 x 1" Adapter or 1 1/4" Fitting Adapter	A4133210	1.05	0.35	0.635	1.96	2.035	1.75	0.98	0.875	0.62
Brass Manifold Adapter, R32 to 1 1/4" Adapter or 1 1/2" Fitting Adapter	A4123215	1.2	0.35	0.63	1.96	2.18	1.75	0.98	0.875	0.62

Part name	Part no.	Codes	Standards	Listings
Brass manifold combination adapter fitting adapters	All	IMC IRC NBC of Canada UMC	CSA B137.5 R32: ISO 228-G 1 1/4" ASTM F877	cNSFus-rfh

Installation

R32 threads into the Uponor TruFLOW and EP Heating Manifolds. Copper sweats to adapter or fitting adapter. For more information, refer to the Uponor Radiant Installation Handbook.

Related applications

Radiant Heating and Cooling Systems

Notes

Sweat to copper pipe or fittings

Footnotes

Contact information

Uponor Inc.
5925 148th Street West
Apple Valley, MN 55124
T 800.321.4739
F 952.891.2008

Uponor Ltd.
6510 Kennedy Road
Mississauga, ON L5T 2X4
T 888.594.7726
F 800.638.9517