

# ProPEX lead-free (LF) brass groove fitting adapters

## Project information

|                                |                 |
|--------------------------------|-----------------|
| Job name:                      | Location:       |
| Engineer:                      | Date submitted: |
| Contractor:                    | Submitted by:   |
| Manufacturer's representative: | Approved by:    |

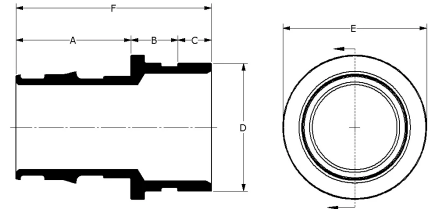
## Technical data

|                         |  |
|-------------------------|--|
| Material                | LF Brass   |
| Temp/pressure ratings   | 73 °F (23 °C) at 160 psi (11 bar)<br>180 °F (82 °C) at 100 psi (6.9 bar)<br>200 °F (93 °C) at 80 psi (5.5 bar) |
| Prop 65 label required? | Yes  |

## Product information and application use

ProPEX® lead-free (LF) brass copper tube size (CTS) roll-groove fitting adapters provide a direct connection to roll-groove connections designed to meet CSA B242-05. These fittings are CTS size on the roll-groove connection side.

Note: Temperature and pressure ratings stated are hydrostatic ratings. For domestic hot-water (DHW) and DHW recirculation installations, operating conditions should not exceed 140°F (60°C) at 80 psi (5.5 bar) in accordance with ASTM F2023. For additional information regarding application-specific temperature and pressure ratings, refer to the Uponor PEX Piping Systems Design and Installation Manual.



| Part name   | Part no.   | A<br>[inch] | B<br>[inch] | C<br>[inch] | D<br>[inch] | E<br>[inch] | F<br>[inch] | G<br>[inch] | Cv    | Equivalent<br>length<br>through<br>[ft] | End<br>Type<br>1 |
|---|------------|-------------|-------------|-------------|-------------|-------------|-------------|-------------|-------|---|------------------|
| ProPEX LF Groove Fitting Adapter, 2" PEX LF Brass x 2" CTS Groove         | LFV2962020 | 2.147       | 0.89        | 0.61        | 2.124       | 2.68        | 3.647       | 1.062       | 141.4 | 0.99                                    | ProPEX 2"        |
| ProPEX LF Groove Fitting Adapter, 2 1/2" PEX LF Brass x 2 1/2" CTS Groove | LFV2962525 | 2.83        | 0.89        | 0.61        | 2.624       | 3.36        | 4.33        | 1.312       | 222.7 | 1.52                                    | ProPEX 2-1/2"    |
| ProPEX LF Groove Fitting Adapter, 3" PEX LF Brass x 3" CTS Groove         | LFV2963030 | 3.38        | 0.89        | 0.61        | 3.125       | 3.79        | 4.88        | 1.563       | 338.3 | 1.55                                    | ProPEX 3"        |
| ProPEX LF Groove Fitting Adapter, 2" PEX LF Brass x 2" IPS Groove         | LFV2972020 | 2.147       | 0.875       | 0.625       | 2.375       | 2.68        | 3.647       | 1.187       | 114.5 | 2.34                                    | ProPEX 2"        |
| ProPEX LF Groove Fitting Adapter, 2 1/2" PEX LF Brass x 2 1/2" IPS Groove | LFV2972525 | 2.83        | 0.875       | 0.625       | 2.875       | 3.36        | 4.33        | 1.437       | 202   | 7.63                                    | ProPEX 2-1/2"    |
| ProPEX LF Groove Fitting Adapter, 2 1/2" PEX LF Brass x 3" IPS Groove     | LFV2972530 | 2.83        | 0.875       | 0.625       | 3.5         | 3.501       | 4.33        | 1.75        | 199.8 | 2.39                                    | ProPEX 2-1/2"    |
| ProPEX LF Groove Fitting Adapter, 3" PEX LF Brass x 3" IPS Groove         | LFV2973030 | 3.38        | 0.875       | 0.625       | 3.5         | 3.79        | 4.88        | 1.75        | 282.4 | 2.77                                    | ProPEX 3"        |

| Part name   | Part no.   | End Type 2        | Weight per UOM [lbs/UOM] |
|---|------------|-------------------|--------------------------|
| ProPEX LF Groove Fitting Adapter, 2" PEX LF Brass x 2" CTS Groove         | LFV2962020 | CTS Groove 2"     | 1.12                     |
| ProPEX LF Groove Fitting Adapter, 2 1/2" PEX LF Brass x 2 1/2" CTS Groove | LFV2962525 | CTS Groove 2-1/2" | 1.86                     |
| ProPEX LF Groove Fitting Adapter, 3" PEX LF Brass x 3" CTS Groove         | LFV2963030 | CTS Groove 3"     | 2.66                     |
| ProPEX LF Groove Fitting Adapter, 2" PEX LF Brass x 2" IPS Groove         | LFV2972020 | IPS Groove 2"     | 1.2                      |
| ProPEX LF Groove Fitting Adapter, 2 1/2" PEX LF Brass x 2 1/2" IPS Groove | LFV2972525 | IPS Groove 2-1/2" | 1.92                     |
| ProPEX LF Groove Fitting Adapter, 2 1/2" PEX LF Brass x 3" IPS Groove     | LFV2972530 | IPS Groove 3"     | 2.18                     |
| ProPEX LF Groove Fitting Adapter, 3" PEX LF Brass x 3" IPS Groove         | LFV2973030 | IPS Groove 3"     | 2.76                     |

| Part name   | Part no. | Codes                                      | Standards  | Listings                                 |
|---|----------|--|--|--|
| ProPEX lead-free (LF) brass groove fitting adapters | All      | UPC IMC IPC IBC IRC UMC NSPC NPC of Canada | ASTM F1960 CSA B137.5 NSF/ANSI 14 NSF/ANSI/CAN 61 NSF/ANSI/CAN 372 ASTM F877 | IAPMO-ES ICC-ES-PMG U.P.Code cNSFus-pw-G |

In addition, the following parts have additional codes, standards, or listings:

|   |            |
|---|------------|
| ProPEX LF Groove Fitting Adapter, 2 1/2" PEX LF Brass x 3" IPS Groove | LFV2972530 |
|---|------------|

| Installation  | Related applications  |
|---|---|
| ProPEX tool and ProPEX rings (sold separately) are required for connecting the PEX tubing. For more information, refer to the Uponor AquaPEX® professional plumbing installation guide. For making roll-groove connections, follow the roll-groove fitting manufacturer's installation instructions | PEX-a Plumbing Systems  |
|   | Hydronic Radiant Heating and Cooling Systems  |
|   | Permafrost Protection Systems   |
|   | Turf Conditioning Systems   |
| Notes   |   |
| Cv = 141.4 when connecting Pex to Pex<br>Cv Outlet 2 = 86.1 when transitioning from Metal to Pex  |   |
| Cv = 222.7 when connecting Pex to Pex<br>Cv Outlet 2 = 138.7 when transitioning Metal to Pex  |   |
| Cv = 338.3 when connecting Pex to Pex<br>Cv Outlet 2 = 192.3 when transitioning Metal to Pex  |   |
| Cv = 114.5 when connecting Pex to Pex<br>Cv Outlet 2 = 79.7 when transitioning Metal to Pex   |   |
| Cv = 202 when connecting Pex to Pex<br>Cv Outlet 2 = 130.2 when transitioning Metal to Pex  |   |
| Cv = 199.8 when connecting Pex to Pex<br>Cv Outlet 2 = 114.9 when transitioning Metal to Pex  |   |
| Cv = 282.4 when connecting Pex to Pex<br>Cv Outlet 2 = 177.4 when transitioning from Metal to Pex   |   |
| Footnotes   | Contact information   |
| -   | Uponor Inc.<br>5925 148th Street West<br>Apple Valley, MN 55124<br>T 800.321.4739<br>F 952.891.2008 |
|   | Uponor Ltd.<br>6510 Kennedy Road<br>Mississauga, ON L5T 2X4<br>T 888.594.7726<br>F 800.638.9517     |