

ProPEX lead-free (LF) brass sweat adapters

Project information

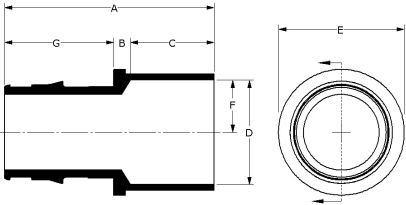
Job name:	Location:
Engineer:	Date submitted:
Contractor:	Submitted by:
Manufacturer's representative:	Approved by:

Technical data

Material	LF Brass
Temp/pressure ratings	73 °F (23 °C) at 160 psi (11 bar) 180 °F (82 °C) at 100 psi (6.9 bar) 200 °F (93 °C) at 80 psi (5.5 bar)
Prop 65 label required?	Yes

Product information and application use

ProPEX® lead-free (LF) brass sweat adapters transition Uponor PEX tubing to copper pipe for use in hot and cold domestic potable water systems, residential fire safety and hydronic radiant heating and cooling systems. These adapters are safe for direct burial in soil.



Note: Temperature and pressure ratings stated are hydrostatic ratings. For domestic hot-water (DHW) and DHW recirculation installations, operating conditions should not exceed 140°F (60°C) at 80 psi (5.5 bar) in accordance with ASTM F2023. For additional information regarding application-specific temperature and pressure ratings, refer to the Uponor PEX Piping Systems Design and Installation Manual.

Part name	Part no.	Cv	End Type 1	End Type 2
ProPEX LF Brass Sweat Adapter, 3/8" PEX x 1/2" Copper	LF4513850	5.7	ProPEX 3/8"	Sweat 1/2"
ProPEX LF Brass Sweat Adapter, 3/4" PEX x 3/4" Copper	LF4517575	13.4	ProPEX 3/4"	Sweat 3/4"
ProPEX LF Brass Sweat Adapter, 1" PEX x 1" Copper	LF4511010	22.1	ProPEX 1"	Sweat 1"
ProPEX LF Brass Sweat Adapter, 1 1/4" PEX x 1 1/4" Copper	LF4511313	34	ProPEX 1-1/4"	Sweat 1-1/4"
ProPEX LF Brass Sweat Adapter, 1/2" PEX x 3/4" Copper	LF4515075	5.1	ProPEX 1/2"	Sweat 3/4"
ProPEX LF Brass Sweat Adapter, 1/2" PEX x 1/2" Copper	LF4515050	5.7	ProPEX 1/2"	Sweat 1/2"
ProPEX LF Brass Sweat Adapter, 3/4" PEX x 1/2" Copper	LF4517550	8.8	ProPEX 3/4"	Sweat 1/2"
ProPEX LF Brass Sweat Adapter, 3/4" PEX x 1" Copper	LF4517510	10.9	ProPEX 3/4"	Sweat 1"
ProPEX LF Brass Sweat Adapter, 1 1/2" PEX x 1 1/2" Copper	LF4511515	45.5	ProPEX 1-1/2"	Sweat 1-1/2"
ProPEX LF Brass Sweat Adapter, 2" PEX x 2" Copper	LF4512020	83.6	ProPEX 2"	Sweat 2"
ProPEX LF Brass Sweat Adapter, 2 1/2" PEX x 2 1/2" Copper	LF4512525	136.2	ProPEX 2-1/2"	Sweat 2-1/2"
ProPEX LF Brass Sweat Adapter, 3" PEX x 3" Copper	LF4513030	189.1	ProPEX 3"	Sweat 3"

Part name	Part no.	Codes	Standards	Listings
ProPEX lead-free (LF) brass sweat adapters	All	UPC IBC IRC IPC NPC of Canada UMC NSPC IMC	NSF-372 ASTM F877 ASTM F1960 CSA B137.5 NSF-61 NSF-14	IAPMO-ES ICC-ES-PMG U.P.Code
In addition, the following parts have additional codes, standards, or listings:				
ProPEX LF Brass Sweat Adapter, 3/8" PEX x 1/2" Copper	LF4513850			cNSFus-pw-G
ProPEX LF Brass Sweat Adapter, 3/4" PEX x 3/4" Copper	LF4517575		UL 1821	cNSFus-pw-fs-G
ProPEX LF Brass Sweat Adapter, 1" PEX x 1" Copper	LF4511010		UL 1821	cNSFus-pw-fs-G
ProPEX LF Brass Sweat Adapter, 1 1/4" PEX x 1 1/4" Copper	LF4511313		UL 1821	cNSFus-pw-fs-G
ProPEX LF Brass Sweat Adapter, 1/2" PEX x 3/4" Copper	LF4515075			cNSFus-pw-G
ProPEX LF Brass Sweat Adapter, 1/2" PEX x 1/2" Copper	LF4515050			cNSFus-pw-G
ProPEX LF Brass Sweat Adapter, 3/4" PEX x 1/2" Copper	LF4517550			cNSFus-pw-G
ProPEX LF Brass Sweat Adapter, 3/4" PEX x 1" Copper	LF4517510			cNSFus-pw-G
ProPEX LF Brass Sweat Adapter, 1 1/2" PEX x 1 1/2" Copper	LF4511515			cNSFus-pw-G
ProPEX LF Brass Sweat Adapter, 2" PEX x 2" Copper	LF4512020			cNSFus-pw-G
ProPEX LF Brass Sweat Adapter, 2 1/2" PEX x 2 1/2" Copper	LF4512525			cNSFus-pw-G
ProPEX LF Brass Sweat Adapter, 3" PEX x 3" Copper	LF4513030			cNSFus-pw-G

Installation	Related applications
Use the appropriate Uponor ProPEX rings for the tubing (sold separately). Do not solder within 18" of ProPEX fittings. Refer to the AquaPEX® Professional Plumbing Installation Guide, Radiant Floor Heating Installation Handbook or AquaSAFETM Residential Fire Sprinkler Installation Guide for additional information.	Radiant Heating and Cooling Systems
	Permafrost Protection Systems
	Turf Conditioning Systems
	AquaSAFE™ Fire Safety Systems

Footnotes	Contact information
-	<div> <div> Uponor Inc. 5925 148th Street West Apple Valley, MN 55124 T 800.321.4739 F 952.891.2008 </div> <div> Uponor Ltd. 6510 Kennedy Road Mississauga, ON L5T 2X4 T 888.594.7726 F 800.638.9517 </div> </div>