

TotalFit male threaded adapters

Project information

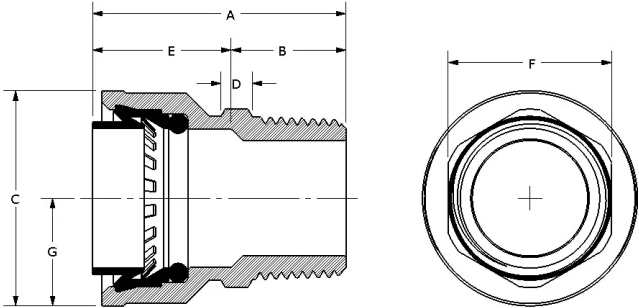
|                                |                 |
|--------------------------------|-----------------|
| Job name:                      | Location:       |
| Engineer:                      | Date submitted: |
| Contractor:                    | Submitted by:   |
| Manufacturer's representative: | Approved by:    |

Technical data

|                         |  |
|-------------------------|--|
| Material                | Engineered Polymer   |
| Temp/pressure ratings   | 73 °F (23 °C) at 160 psi (11 bar)<br>180 °F (82 °C) at 100 psi (6.9 bar)<br>200 °F (93 °C) at 80 psi (5.5 bar) |
| Prop 65 label required? | No   |

Product information and application use

TotalFit™ is the professional-grade engineered polymer (EP) push-to-connect solution that provides greater value for residential projects with the same versatility and speed as brass push-to-connect fittings for PEX, PE-RT, CPVC, and copper piping systems.



| Part name                                       | Part no.  | End Type 1    | End Type 2 |
|---|-----------|---------------|------------|
| TotalFit Male Threaded Adapter, 1" x 1" NPT     | TF4521010 | TotalFit 1"   | MNPT 1"    |
| TotalFit Male Threaded Adapter, 1/2" x 1/2" NPT | TF4525050 | TotalFit 1/2" | MNPT 1/2"  |
| TotalFit Male Threaded Adapter, 1/2" x 3/4" NPT | TF4525075 | TotalFit 1/2" | MNPT 3/4"  |
| TotalFit Male Threaded Adapter, 3/4" x 1" NPT   | TF4527510 | TotalFit 3/4" | MNPT 1"    |
| TotalFit Male Threaded Adapter, 3/4" x 3/4" NPT | TF4527575 | TotalFit 3/4" | MNPT 3/4"  |

| Part name   | Part no.  | Codes                                     | Standards  | Listings                                  |
|---|-----------|---|--|---|
| TotalFit male threaded adapters   | All       | UPC IRC IPC NPC of Canada UMC CMC CPC IMC | ASTM F877 NSF/ANSI/CAN 372 NSF/ANSI/CAN 61 NSF/ANSI 14 ASSE 1061 | IAPMO K-13573 IAPMO K-13571 IAPMO K-13572 |
| In addition, the following parts have additional codes, standards, or listings: |           |   |  |   |
| TotalFit Male Threaded Adapter, 3/4" x 3/4" NPT                                 | TF4527575 |   |  |   |

| Installation  | Related applications                   |
|---|--|
| Install on PEX, PE-RT, CPVC, and copper piping systems. Use deburr and depth tool to remove excess material or burrs and mark the appropriate depth on pipe. If using flexible PEX or PE-RT, install the insert inside the pipe first before making the connection. Only use PTFE thread seal tape (with a minimum of three wraps) to seal male and female adapters. Refer to the Uponor TotalFit Instruction Sheet for additional information. | Plumbing<br>Hydronic Heating & Cooling |

| Footnotes | Contact information  |
|-----------|--|
| -         | Uponor Inc.<br>5925 148th Street West<br>Apple Valley, MN 55124<br>T 800.321.4739<br>F 952.891.2008<br><br>Uponor Ltd.<br>6510 Kennedy Road<br>Mississauga, ON L5T 2X4<br>T 888.594.7726<br>F 800.638.9517 |