

ChlorFIT Fittings Reducing Tee

Project Information

| | |
|--------------------------------|-----------------|
| Job name: | Location: |
| Engineer: | Date submitted: |
| Contractor: | Submitted by: |
| Manufacturer's representative: | Approved by: |

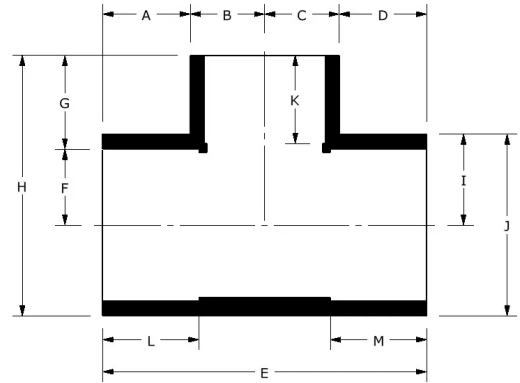
Technical data

Material CPVC

Product information and application use

Use Uponor ChlorFIT® Schedule 80 Corzan® CPVC Tees in hot and cold potable-water systems as well as hydronic heating and cooling applications.

Corzan® is a registered trademark of Lubrizol Advanced Materials, Inc.



| Part name | Part no. | A [inch] | B [inch] | C [inch] | D [inch] | E [inch] | F [inch] | G [inch] | H [inch] | I [inch] | J [inch] |
|--|-----------|----------|----------|----------|----------|----------|----------|----------|----------|----------|----------|
| 3/4" x 1/2" CPVC 80 Reducing Tee (SxSxS) | 9801101 | 1.03 | 0.58 | 0.58 | 1.03 | 3.22 | 0.525 | 1.085 | 2.328 | 0.719 | 1.437 |
| 1" x 1/2" CPVC 80 Reducing Tee (SxSxS) | 9801130 | 1.28 | 0.58 | 0.58 | 1.28 | 3.72 | 0.657 | 0.972 | 2.485 | 0.855 | 1.71 |
| 1" x 3/4" CPVC 80 Reducing Tee (SxSxS) | 9801131 | 1.165 | 0.695 | 0.695 | 1.165 | 3.72 | 0.657 | 1.202 | 2.715 | 0.855 | 1.71 |
| 1-1/4" x 1/2" CPVC 80 Reducing Tee (SxSxS), Bushed | 9801166FB | 1.138 | 0.854 | 0.854 | 1.138 | 3.985 | 0.83 | 1.52 | 3.393 | 1.043 | 2.087 |
| 1-1/4" x 3/4" CPVC 80 Reducing Tee (SxSxS), Bushed | 9801167FB | 1.138 | 0.854 | 0.854 | 1.138 | 3.985 | 0.83 | 1.517 | 3.391 | 1.043 | 2.087 |
| 1-1/4" x 1" CPVC 80 Reducing Tee (SxSxS) | 9801168 | 1.122 | 0.855 | 0.855 | 1.122 | 3.954 | 0.83 | 1.21 | 3.08 | 1.04 | 2.08 |
| 1-1/2" x 1/2" CPVC 80 Reducing Tee (SxSxS) | 9801209 | 1.334 | 0.58 | 0.58 | 1.334 | 3.828 | 0.95 | 0.963 | 3.08 | 1.167 | 2.335 |
| 1-1/2" x 3/4" CPVC 80 Reducing Tee (SxSxS) | 9801210 | 1.281 | 0.695 | 0.695 | 1.281 | 3.952 | 0.95 | 1.09 | 3.207 | 1.167 | 2.335 |
| 1-1/2" x 1" CPVC 80 Reducing Tee (SxSxS) | 9801211 | 1.246 | 0.855 | 0.855 | 1.246 | 4.202 | 0.95 | 1.21 | 3.328 | 1.167 | 2.335 |
| 1-1/2" x 1-1/4" CPVC 80 Reducing Tee (SxSxS), Bushed | 9801212FB | 1.27 | 1.169 | 1.169 | 1.27 | 4.878 | 0.95 | 1.793 | 3.912 | 1.169 | 2.338 |
| 2" x 1/2" CPVC 80 Reducing Tee (SxSxS) | 9801247 | 1.46 | 0.58 | 0.58 | 1.46 | 4.08 | 1.187 | 0.972 | 3.585 | 1.425 | 2.85 |
| 2" x 3/4" CPVC 80 Reducing Tee (SxSxS) | 9801248 | 1.407 | 0.695 | 0.695 | 1.407 | 4.204 | 1.187 | 1.102 | 3.714 | 1.425 | 2.85 |
| 2" x 1" CPVC 80 Reducing Tee (SxSxS) | 9801249 | 1.372 | 0.855 | 0.855 | 1.372 | 4.454 | 1.187 | 1.222 | 3.835 | 1.425 | 2.85 |
| 2" x 1-1/4" CPVC 80 Reducing Tee (SxSxS), Bushed | 9801250FB | 1.366 | 1.444 | 1.444 | 1.366 | 5.62 | 1.187 | 1.919 | 4.55 | 1.444 | 2.888 |
| 2" x 1-1/2" CPVC 80 Reducing Tee (SxSxS) | 9801251 | 1.372 | 1.167 | 1.167 | 1.372 | 5.08 | 1.187 | 1.472 | 4.085 | 1.425 | 2.85 |
| 2-1/2" x 1/2" CPVC 80 Reducing Tee (SxSxS), Bushed | 9801287FB | 1.554 | 1.496 | 1.496 | 1.554 | 6.1 | 1.437 | 1.91 | 5.091 | 1.743 | 3.487 |
| 2-1/2" x 3/4" CPVC 80 Reducing Tee (SxSxS), Bushed | 9801288FB | 1.554 | 1.496 | 1.496 | 1.554 | 6.1 | 1.437 | 1.915 | 5.096 | 1.743 | 3.487 |
| 2-1/2" x 1" CPVC 80 Reducing Tee (SxSxS), Bushed | 9801289FB | 1.554 | 1.496 | 1.496 | 1.554 | 6.1 | 1.437 | 1.924 | 5.105 | 1.743 | 3.487 |
| 2-1/2" x 1-1/4" CPVC 80 Reducing Tee (SxSxS), Bushed | 9801290FB | 1.554 | 1.496 | 1.496 | 1.554 | 6.1 | 1.437 | 1.904 | 5.085 | 1.743 | 3.487 |
| 2-1/2" x 1-1/2" CPVC 80 Reducing Tee (SxSxS), Bushed | 9801291FB | 1.554 | 1.496 | 1.496 | 1.554 | 6.1 | 1.437 | 1.91 | 5.091 | 1.743 | 3.487 |
| 2-1/2" x 2" CPVC 80 Reducing Tee (SxSxS) | 9801292 | 1.54 | 1.5 | 1.5 | 1.54 | 6.08 | 1.437 | 1.602 | 4.785 | 1.745 | 3.49 |
| 3" x 1/2" CPVC 80 Reducing Tee (SxSxS), Bushed | 9801333FB | 1.766 | 1.43 | 1.43 | 1.766 | 6.392 | 1.75 | 1.926 | 5.758 | 2.081 | 4.163 |
| 3" x 3/4" CPVC 80 Reducing Tee (SxSxS), Bushed | 9801334FB | 1.766 | 1.43 | 1.43 | 1.766 | 6.392 | 1.75 | 1.932 | 5.763 | 2.081 | 4.163 |
| 3" x 1" CPVC 80 Reducing Tee (SxSxS), Bushed | 9801335FB | 1.766 | 1.43 | 1.43 | 1.766 | 6.392 | 1.75 | 1.941 | 5.772 | 2.081 | 4.163 |
| 3" x 1-1/4" CPVC 80 Reducing Tee (SxSxS), Bushed | 9801336FB | 1.766 | 1.43 | 1.43 | 1.766 | 6.392 | 1.75 | 1.92 | 5.752 | 2.081 | 4.163 |
| 3" x 1-1/2" CPVC 80 Reducing Tee (SxSxS), Bushed | 9801337FB | 1.766 | 1.43 | 1.43 | 1.766 | 6.392 | 1.75 | 1.926 | 5.758 | 2.081 | 4.163 |

| | | | | | | | | | | | |
|--|-----------|-------|-------|-------|-------|--------|-------|-------|--------|-------|-------|
| 3" x 2" CPVC 80 Reducing Tee (SxSxS) | 9801338 | 1.746 | 1.425 | 1.425 | 1.746 | 6.342 | 1.75 | 1.6 | 5.425 | 2.075 | 4.15 |
| 3" x 2-1/2" CPVC 80 Reducing Tee (SxSxS), Bushed | 9801339FB | 1.643 | 2.081 | 2.081 | 1.643 | 7.45 | 1.75 | 2.315 | 6.146 | 2.081 | 4.163 |
| 4" x 1/2" CPVC 80 Reducing Tee (SxSxS), Bushed | 9801415FB | 2.076 | 1.446 | 1.446 | 2.076 | 7.046 | 2.25 | 1.935 | 6.796 | 2.611 | 5.221 |
| 4" x 3/4" CPVC 80 Reducing Tee (SxSxS), Bushed | 9801416FB | 2.076 | 1.446 | 1.446 | 2.076 | 7.046 | 2.25 | 1.941 | 6.802 | 2.611 | 5.221 |
| 4" x 1" CPVC 80 Reducing Tee (SxSxS), Bushed | 9801417FB | 2.106 | 1.445 | 1.445 | 2.106 | 7.102 | 2.259 | 1.891 | 6.765 | 2.615 | 5.23 |
| 4" x 1-1/4" CPVC 80 Reducing Tee (SxSxS), Bushed | 9801418FB | 2.076 | 1.446 | 1.446 | 2.076 | 7.046 | 2.25 | 1.93 | 6.79 | 2.611 | 5.221 |
| 4" x 1-1/2" CPVC 80 Reducing Tee (SxSxS), Bushed | 9801419FB | 2.076 | 1.446 | 1.446 | 2.076 | 7.046 | 2.25 | 1.935 | 6.796 | 2.611 | 5.221 |
| 4" x 2" CPVC 80 Reducing Tee (SxSxS) | 9801420 | 2.106 | 1.445 | 1.445 | 2.106 | 7.102 | 2.25 | 1.62 | 6.485 | 2.615 | 5.23 |
| 4" x 2-1/2" CPVC 80 Reducing Tee (SxSxS), Bushed | 9801421FB | 2.056 | 2.083 | 2.083 | 2.056 | 8.278 | 2.25 | 2.373 | 7.252 | 2.628 | 5.257 |
| 4" x 3" CPVC 80 Reducing Tee (SxSxS) | 9801422 | 2.039 | 2.075 | 2.075 | 2.039 | 8.228 | 2.25 | 1.98 | 6.845 | 2.615 | 5.23 |
| 6" x 1/2" CPVC 80 Reducing Tee (SxSxS), Bushed | 9801523FB | 3.929 | 2.629 | 2.629 | 3.929 | 13.115 | 3.313 | 4.111 | 11.21 | 3.787 | 7.573 |
| 6" x 3/4" CPVC 80 Reducing Tee (SxSxS), Bushed | 9801524FB | 3.929 | 2.629 | 2.629 | 3.929 | 13.115 | 3.313 | 4.117 | 11.215 | 3.787 | 7.573 |
| 6" x 1" CPVC 80 Reducing Tee (SxSxS), Bushed | 9801525FB | 3.929 | 2.629 | 2.629 | 3.929 | 13.115 | 3.313 | 4.125 | 11.224 | 3.787 | 7.573 |
| 6" x 1-1/4" CPVC 80 Reducing Tee (SxSxS), Bushed | 9801526FB | 3.929 | 2.629 | 2.629 | 3.929 | 13.115 | 3.313 | 4.105 | 11.204 | 3.787 | 7.573 |
| 6" x 1-1/2" CPVC 80 Reducing Tee (SxSxS), Bushed | 9801527FB | 3.929 | 2.629 | 2.629 | 3.929 | 13.115 | 3.313 | 4.111 | 11.21 | 3.787 | 7.573 |
| 6" x 2" CPVC 80 Reducing Tee (SxSxS) | 9801528 | 3.013 | 1.437 | 1.437 | 3.013 | 8.9 | 3.323 | 1.927 | 9.047 | 3.797 | 7.594 |
| 6" x 2-1/2" CPVC 80 Reducing Tee (SxSxS), Bushed, 2 Step | 9801529FB | 3.929 | 2.629 | 2.629 | 3.929 | 13.115 | 3.313 | 4.204 | 11.302 | 3.787 | 7.573 |
| 6" x 3" CPVC 80 Reducing Tee (SxSxS), Bushed | 9801530FB | 3.929 | 2.629 | 2.629 | 3.929 | 13.115 | 3.313 | 3.9 | 11 | 3.787 | 7.573 |
| 6" x 4" CPVC 80 Reducing Tee (SxSxS) | 9801532 | 2.725 | 2.635 | 2.635 | 2.725 | 10.72 | 3.313 | 2.487 | 9.59 | 3.79 | 7.58 |
| 8" x 3/4" CPVC 80 Reducing Tee (SxSxS), Bushed, 3 Step | 9801574FB | 3.819 | 3.794 | 3.794 | 3.819 | 15.226 | 4.313 | 4.577 | 13.759 | 4.869 | 9.738 |
| 8" x 1" CPVC 80 Reducing Tee (SxSxS), Bushed, 2 Step | 9801575FB | 3.819 | 3.794 | 3.794 | 3.819 | 15.226 | 4.313 | 4.312 | 13.493 | 4.869 | 9.738 |
| 8" x 1-1/2" CPVC 80 Reducing Tee (SxSxS), Bushed, 2 Step | 9801577FB | 3.819 | 3.794 | 3.794 | 3.819 | 15.226 | 4.313 | 4.315 | 13.496 | 4.869 | 9.738 |
| 8" x 2" CPVC 80 Reducing Tee (SxSxS), Bushed, 2 Step | 9801578FB | 3.819 | 3.794 | 3.794 | 3.819 | 15.226 | 4.313 | 4.24 | 13.422 | 4.869 | 9.738 |
| 8" x 2-1/2" CPVC 80 Reducing Tee (SxSxS), Bushed, 2 Step | 9801579FB | 3.819 | 3.794 | 3.794 | 3.819 | 15.226 | 4.313 | 4.162 | 13.343 | 4.869 | 9.738 |
| 8" x 3" CPVC 80 Reducing Tee (SxSxS), Bushed | 9801580FB | 3.819 | 3.794 | 3.794 | 3.819 | 15.226 | 4.313 | 3.867 | 13.048 | 4.869 | 9.738 |
| 8" x 4" CPVC 80 Reducing Tee (SxSxS), Bushed | 9801582FB | 3.819 | 3.794 | 3.794 | 3.819 | 15.226 | 4.313 | 3.879 | 13.061 | 4.869 | 9.738 |
| 8" x 6" CPVC 80 Reducing Tee (SxSxS) | 9801585 | 4.789 | 3.82 | 3.82 | 4.789 | 17.218 | 4.313 | 3.374 | 12.528 | 4.843 | 9.685 |

| Part name | Part no. | K [inch] | L [inch] | M [inch] | End Type 1 | End Type 2 | End Type 3 | Operating Temperature 1 [°F] | Operating Temperature 2 [°F] | Weight per UOM [lbs/UOM] |
|--|-----------|----------|----------|----------|---------------|---------------|-------------|----------------------------------|-----------------------------------|--------------------------|
| 3/4" x 1/2" CPVC 80 Reducing Tee (SxSxS) | 9801101 | 0.882 | 1.008 | 1.008 | Socket 3/4" | Socket 3/4" | Socket 1/2" | 73 °F (23 °C) at 690 psi (23 °C) | 180 °F (82 °C) at 170 psi (82 °C) | 0.25 |
| 1" x 1/2" CPVC 80 Reducing Tee (SxSxS) | 9801130 | 0.882 | 1.133 | 1.133 | Socket 1" | Socket 1" | Socket 1/2" | 73 °F (23 °C) at 630 psi (23 °C) | 180 °F (82 °C) at 155 psi (82 °C) | 0.33 |
| 1" x 3/4" CPVC 80 Reducing Tee (SxSxS) | 9801131 | 1.008 | 1.133 | 1.133 | Socket 1" | Socket 1" | Socket 3/4" | 73 °F (23 °C) at 630 psi (23 °C) | 180 °F (82 °C) at 155 psi (82 °C) | 0.35 |
| 1-1/4" x 1/2" CPVC 80 Reducing Tee (SxSxS), Bushed | 9801166FB | 0.883 | 1.265 | 1.265 | Socket 1-1/4" | Socket 1-1/4" | Socket 1/2" | 73 °F (23 °C) at 520 psi (23 °C) | 180 °F (82 °C) at 130 psi (82 °C) | 0.59 |
| 1-1/4" x 3/4" CPVC 80 Reducing Tee (SxSxS), Bushed | 9801167FB | 1.022 | 1.265 | 1.265 | Socket 1-1/4" | Socket 1-1/4" | Socket 3/4" | 73 °F (23 °C) at 520 psi (23 °C) | 180 °F (82 °C) at 130 psi (82 °C) | 0.57 |
| 1-1/4" x 1" CPVC 80 Reducing Tee (SxSxS) | 9801168 | 1.133 | 1.258 | 1.258 | Socket 1-1/4" | Socket 1-1/4" | Socket 1" | 73 °F (23 °C) at 520 psi (23 °C) | 180 °F (82 °C) at 130 psi (82 °C) | 0.47 |
| 1-1/2" x 1/2" CPVC 80 Reducing Tee (SxSxS) | 9801209 | 0.882 | 1.383 | 1.383 | Socket 1-1/2" | Socket 1-1/2" | Socket 1/2" | 73 °F (23 °C) at 470 psi (23 °C) | 180 °F (82 °C) at 115 psi (82 °C) | 0.49 |
| 1-1/2" x 3/4" CPVC 80 Reducing Tee (SxSxS) | 9801210 | 1.008 | 1.383 | 1.383 | Socket 1-1/2" | Socket 1-1/2" | Socket 3/4" | 73 °F (23 °C) at 470 psi (23 °C) | 180 °F (82 °C) at 115 psi (82 °C) | 1.12 |

| | | | | | | | | | | |
|---|-----------|-------|-------|-------|------------------|------------------|------------------|-------------------------------------|--------------------------------------|------|
| 1-1/2" x 1" CPVC 80 Reducing Tee (SxSxS) | 9801211 | 1.133 | 1.383 | 1.383 | Socket 1-1/2" | Socket 1-1/2" | Socket 1" | 73 °F (23 °C) at 470 psi (23 °C) | 180 °F (82 °C) at 115 psi (82 °C) | 0.83 |
| 1-1/2" x 1-1/4" CPVC 80 Reducing Tee (SxSxS), Bushed | 9801212FB | 1.272 | 1.404 | 1.404 | Socket 1-1/2" | Socket 1-1/2" | Socket 1-1/4" | 73 °F (23 °C) at 470 psi (23 °C) | 180 °F (82 °C) at 115 psi (82 °C) | 0.82 |
| 2" x 1/2" CPVC 80 Reducing Tee (SxSxS) | 9801247 | 0.882 | 1.509 | 1.509 | Socket 2" | Socket 2" | Socket 1/2" | 73 °F (23 °C) at 400 psi (23 °C) | 180 °F (82 °C) at 100 psi (82 °C) | 0.49 |
| 2" x 3/4" CPVC 80 Reducing Tee (SxSxS) | 9801248 | 1.008 | 1.509 | 1.509 | Socket 2" | Socket 2" | Socket 3/4" | 73 °F (23 °C) at 400 psi (23 °C) | 180 °F (82 °C) at 100 psi (82 °C) | 1.22 |
| 2" x 1" CPVC 80 Reducing Tee (SxSxS) | 9801249 | 1.133 | 1.509 | 1.509 | Socket 2" | Socket 2" | Socket 1" | 73 °F (23 °C) at 400 psi (23 °C) | 180 °F (82 °C) at 100 psi (82 °C) | 0.97 |
| 2" x 1-1/4" CPVC 80 Reducing Tee (SxSxS), Bushed | 9801250FB | 1.27 | 1.513 | 1.513 | Socket 2" | Socket 2" | Socket 1-1/4" | 73 °F (23 °C) at 400 psi (23 °C) | 180 °F (82 °C) at 100 psi (82 °C) | 1.19 |
| 2" x 1-1/2" CPVC 80 Reducing Tee (SxSxS) | 9801251 | 1.383 | 1.509 | 1.509 | Socket 2" | Socket 2" | Socket 1-1/2" | 73 °F (23 °C) at 400 psi (23 °C) | 180 °F (82 °C) at 100 psi (82 °C) | 1.07 |
| 2-1/2" x 1/2" CPVC 80 Reducing Tee (SxSxS), Bushed | 9801287FB | 0.903 | 1.768 | 1.768 | Socket 2-1/2" | Socket 2-1/2" | Socket 1/2" | 73 °F (23 °C) at 420 psi (23 °C) | 180 °F (82 °C) at 105 psi (82 °C) | 1.58 |
| 2-1/2" x 3/4" CPVC 80 Reducing Tee (SxSxS), Bushed | 9801288FB | 1.022 | 1.768 | 1.768 | Socket 2-1/2" | Socket 2-1/2" | Socket 3/4" | 73 °F (23 °C) at 420 psi (23 °C) | 180 °F (82 °C) at 105 psi (82 °C) | 1.59 |
| 2-1/2" x 1" CPVC 80 Reducing Tee (SxSxS), Bushed | 9801289FB | 1.143 | 1.768 | 1.768 | Socket 2-1/2" | Socket 2-1/2" | Socket 1" | 73 °F (23 °C) at 420 psi (23 °C) | 180 °F (82 °C) at 105 psi (82 °C) | 1.59 |
| 2-1/2" x 1-1/4" CPVC 80 Reducing Tee (SxSxS), Bushed | 9801290FB | 1.27 | 1.768 | 1.768 | Socket 2-1/2" | Socket 2-1/2" | Socket 1-1/4" | 73 °F (23 °C) at 420 psi (23 °C) | 180 °F (82 °C) at 105 psi (82 °C) | 1.57 |
| 2-1/2" x 1-1/2" CPVC 80 Reducing Tee (SxSxS), Bushed | 9801291FB | 1.408 | 1.768 | 1.768 | Socket 2-1/2" | Socket 2-1/2" | Socket 1-1/2" | 73 °F (23 °C) at 420 psi (23 °C) | 180 °F (82 °C) at 105 psi (82 °C) | 1.53 |
| 2-1/2" x 2" CPVC 80 Reducing Tee (SxSxS) | 9801292 | 1.509 | 1.759 | 1.759 | Socket 2-1/2" | Socket 2-1/2" | Socket 2" | 73 °F (23 °C) at 420 psi (23 °C) | 180 °F (82 °C) at 105 psi (82 °C) | 1.3 |
| 3" x 1/2" CPVC 80 Reducing Tee (SxSxS), Bushed | 9801333FB | 0.903 | 1.894 | 1.894 | Socket 3" | Socket 3" | Socket 1/2" | 73 °F (23 °C) at 370 psi (23 °C) | 180 °F (82 °C) at 90 psi (82 °C) | 2.01 |
| 3" x 3/4" CPVC 80 Reducing Tee (SxSxS), Bushed | 9801334FB | 1.022 | 1.894 | 1.894 | Socket 3" | Socket 3" | Socket 3/4" | 73 °F (23 °C) at 370 psi (23 °C) | 180 °F (82 °C) at 90 psi (82 °C) | 1.97 |
| 3" x 1" CPVC 80 Reducing Tee (SxSxS), Bushed | 9801335FB | 1.143 | 1.894 | 1.894 | Socket 3" | Socket 3" | Socket 1" | 73 °F (23 °C) at 370 psi (23 °C) | 180 °F (82 °C) at 90 psi (82 °C) | 1.97 |
| 3" x 1-1/4" CPVC 80 Reducing Tee (SxSxS), Bushed | 9801336FB | 1.27 | 1.894 | 1.894 | Socket 3" | Socket 3" | Socket 1-1/4" | 73 °F (23 °C) at 370 psi (23 °C) | 180 °F (82 °C) at 90 psi (82 °C) | 1.95 |
| 3" x 1-1/2" CPVC 80 Reducing Tee (SxSxS), Bushed | 9801337FB | 1.408 | 1.894 | 1.894 | Socket 3" | Socket 3" | Socket 1-1/2" | 73 °F (23 °C) at 370 psi (23 °C) | 180 °F (82 °C) at 90 psi (82 °C) | 1.76 |
| 3" x 2" CPVC 80 Reducing Tee (SxSxS) | 9801338 | 1.509 | 1.89 | 1.89 | Socket 3" | Socket 3" | Socket 2" | 73 °F (23 °C) at 370 psi (23 °C) | 180 °F (82 °C) at 90 psi (82 °C) | 1.73 |
| 3" x 2-1/2" CPVC 80 Reducing Tee (SxSxS), Bushed | 9801339FB | 1.894 | 1.915 | 1.915 | Socket 3" | Socket 3" | Socket 2-1/2" | 73 °F (23 °C) at 370 psi (23 °C) | 180 °F (82 °C) at 90 psi (82 °C) | 1.96 |
| 4" x 1/2" CPVC 80 Reducing Tee (SxSxS), Bushed | 9801415FB | 0.903 | 2.257 | 2.257 | Socket 4" | Socket 4" | Socket 1/2" | 73 °F (23 °C) at 320 psi (23 °C) | 180 °F (82 °C) at 80 psi (82 °C) | 5.73 |
| 4" x 3/4" CPVC 80 Reducing Tee (SxSxS), Bushed | 9801416FB | 1.022 | 2.257 | 2.257 | Socket 4" | Socket 4" | Socket 3/4" | 73 °F (23 °C) at 320 psi (23 °C) | 180 °F (82 °C) at 80 psi (82 °C) | 5.74 |
| 4" x 1" CPVC 80 Reducing Tee (SxSxS), Bushed | 9801417FB | 1.13 | 2.27 | 2.27 | Socket 4" | Socket 4" | Socket 1" | 73 °F (23 °C) at 320 psi (23 °C) | 180 °F (82 °C) at 80 psi (82 °C) | 5.69 |
| 4" x 1-1/4" CPVC 80 Reducing Tee (SxSxS), Bushed | 9801418FB | 1.27 | 2.257 | 2.257 | Socket 4" | Socket 4" | Socket 1-1/4" | 73 °F (23 °C) at 320 psi (23 °C) | 180 °F (82 °C) at 80 psi (82 °C) | 5.72 |
| 4" x 1-1/2" CPVC 80 Reducing Tee (SxSxS), Bushed | 9801419FB | 1.408 | 2.257 | 2.257 | Socket 4" | Socket 4" | Socket 1-1/2" | 73 °F (23 °C) at 320 psi (23 °C) | 180 °F (82 °C) at 80 psi (82 °C) | 5.72 |

| | | | | | | | | | | | °C) |
|--|-----------|-------|-------|-------|-----------|-----------|---------------|----------------------------------|----------------------------------|-------|-----|
| 4" x 2" CPVC 80 Reducing Tee (SxSxS) | 9801420 | 1.509 | 2.27 | 2.27 | Socket 4" | Socket 4" | Socket 2" | 73 °F (23 °C) at 320 psi (23 °C) | 180 °F (82 °C) at 80 psi (82 °C) | 2.48 | |
| 4" x 2-1/2" CPVC 80 Reducing Tee (SxSxS), Bushed | 9801421FB | 1.894 | 2.29 | 2.29 | Socket 4" | Socket 4" | Socket 2-1/2" | 73 °F (23 °C) at 320 psi (23 °C) | 180 °F (82 °C) at 80 psi (82 °C) | 5.72 | |
| 4" x 3" CPVC 80 Reducing Tee (SxSxS) | 9801422 | 1.89 | 2.27 | 2.27 | Socket 4" | Socket 4" | Socket 3" | 73 °F (23 °C) at 320 psi (23 °C) | 180 °F (82 °C) at 80 psi (82 °C) | 3.06 | |
| 6" x 1/2" CPVC 80 Reducing Tee (SxSxS), Bushed | 9801523FB | 0.903 | 3.067 | 3.067 | Socket 6" | Socket 6" | Socket 1/2" | 73 °F (23 °C) at 280 psi (23 °C) | 180 °F (82 °C) at 70 psi (82 °C) | 12.97 | |
| 6" x 3/4" CPVC 80 Reducing Tee (SxSxS), Bushed | 9801524FB | 1.022 | 3.067 | 3.067 | Socket 6" | Socket 6" | Socket 3/4" | 73 °F (23 °C) at 280 psi (23 °C) | 180 °F (82 °C) at 70 psi (82 °C) | 12.98 | |
| 6" x 1" CPVC 80 Reducing Tee (SxSxS), Bushed | 9801525FB | 1.143 | 3.067 | 3.067 | Socket 6" | Socket 6" | Socket 1" | 73 °F (23 °C) at 280 psi (23 °C) | 180 °F (82 °C) at 70 psi (82 °C) | 12.08 | |
| 6" x 1-1/4" CPVC 80 Reducing Tee (SxSxS), Bushed | 9801526FB | 1.27 | 3.067 | 3.067 | Socket 6" | Socket 6" | Socket 1-1/4" | 73 °F (23 °C) at 280 psi (23 °C) | 180 °F (82 °C) at 70 psi (82 °C) | 12.06 | |
| 6" x 1-1/2" CPVC 80 Reducing Tee (SxSxS), Bushed | 9801527FB | 1.408 | 3.067 | 3.067 | Socket 6" | Socket 6" | Socket 1-1/2" | 73 °F (23 °C) at 280 psi (23 °C) | 180 °F (82 °C) at 70 psi (82 °C) | 12.92 | |
| 6" x 2" CPVC 80 Reducing Tee (SxSxS) | 9801528 | 1.51 | 3.02 | 3.02 | Socket 6" | Socket 6" | Socket 2" | 73 °F (23 °C) at 280 psi (23 °C) | 180 °F (82 °C) at 70 psi (82 °C) | 6.74 | |
| 6" x 2-1/2" CPVC 80 Reducing Tee (SxSxS), Bushed, 2 Step | 9801529FB | 1.894 | 3.067 | 3.067 | Socket 6" | Socket 6" | Socket 2-1/2" | 73 °F (23 °C) at 280 psi (23 °C) | 180 °F (82 °C) at 70 psi (82 °C) | 12.02 | |
| 6" x 3" CPVC 80 Reducing Tee (SxSxS), Bushed | 9801530FB | 1.966 | 3.067 | 3.067 | Socket 6" | Socket 6" | Socket 3" | 73 °F (23 °C) at 280 psi (23 °C) | 180 °F (82 °C) at 70 psi (82 °C) | 12.67 | |
| 6" x 4" CPVC 80 Reducing Tee (SxSxS) | 9801532 | 2.27 | 3.02 | 3.02 | Socket 6" | Socket 6" | Socket 4" | 73 °F (23 °C) at 280 psi (23 °C) | 180 °F (82 °C) at 70 psi (82 °C) | 7.22 | |
| 8" x 3/4" CPVC 80 Reducing Tee (SxSxS), Bushed, 3 Step | 9801574FB | 1.008 | 4.062 | 4.062 | Socket 8" | Socket 8" | Socket 3/4" | 73 °F (23 °C) at 250 psi (23 °C) | 180 °F (82 °C) at 60 psi (82 °C) | 27 | |
| 8" x 1" CPVC 80 Reducing Tee (SxSxS), Bushed, 2 Step | 9801575FB | 1.13 | 4.062 | 4.062 | Socket 8" | Socket 8" | Socket 1" | 73 °F (23 °C) at 250 psi (23 °C) | 180 °F (82 °C) at 60 psi (82 °C) | 27 | |
| 8" x 1-1/2" CPVC 80 Reducing Tee (SxSxS), Bushed, 2 Step | 9801577FB | 1.486 | 4.062 | 4.062 | Socket 8" | Socket 8" | Socket 1-1/2" | 73 °F (23 °C) at 250 psi (23 °C) | 180 °F (82 °C) at 60 psi (82 °C) | 27 | |
| 8" x 2" CPVC 80 Reducing Tee (SxSxS), Bushed, 2 Step | 9801578FB | 1.562 | 4.062 | 4.062 | Socket 8" | Socket 8" | Socket 2" | 73 °F (23 °C) at 250 psi (23 °C) | 180 °F (82 °C) at 60 psi (82 °C) | 27 | |
| 8" x 2-1/2" CPVC 80 Reducing Tee (SxSxS), Bushed, 2 Step | 9801579FB | 1.828 | 4.062 | 4.062 | Socket 8" | Socket 8" | Socket 2-1/2" | 73 °F (23 °C) at 250 psi (23 °C) | 180 °F (82 °C) at 60 psi (82 °C) | 27 | |
| 8" x 3" CPVC 80 Reducing Tee (SxSxS), Bushed | 9801580FB | 1.917 | 4.062 | 4.062 | Socket 8" | Socket 8" | Socket 3" | 73 °F (23 °C) at 250 psi (23 °C) | 180 °F (82 °C) at 60 psi (82 °C) | 27 | |
| 8" x 4" CPVC 80 Reducing Tee (SxSxS), Bushed | 9801582FB | 2.246 | 4.062 | 4.062 | Socket 8" | Socket 8" | Socket 4" | 73 °F (23 °C) at 250 psi (23 °C) | 180 °F (82 °C) at 60 psi (82 °C) | 25.22 | |
| 8" x 6" CPVC 80 Reducing Tee (SxSxS) | 9801585 | 3.094 | 4.094 | 4.094 | Socket 8" | Socket 8" | Socket 6" | 73 °F (23 °C) at 250 psi (23 °C) | 180 °F (82 °C) at 60 psi (82 °C) | 17.32 | |

| Part name | Part no. | Codes | Standards | Listings |
|---|----------|------------------------------|---------------------------------------|----------------------|
| ChlorFIT Fittings Reducing Tee | All | UPC IBC IRC IPC UMC NSPC IMC | ASTM F439 NSF/ANSI/CAN 61 NSF/ANSI 14 | ULC NSFpw-G U.P.Code |
| In addition, the following parts have additional codes, standards, or listings: | | | | |
| 3/4" x 1/2" CPVC 80 Reducing Tee (SxSxS) | 9801101 | | | ICC-ES-PMG |
| 1" x 1/2" CPVC 80 Reducing Tee (SxSxS) | 9801130 | | | ICC-ES-PMG |
| 1" x 3/4" CPVC 80 Reducing Tee (SxSxS) | 9801131 | | | ICC-ES-PMG |

| | | |
|--|-----------|------------|
| 1-1/4" x 1/2" CPVC 80 Reducing Tee (SxSxS), Bushed | 9801166FB | ICC-ES-PMG |
| 1-1/4" x 3/4" CPVC 80 Reducing Tee (SxSxS), Bushed | 9801167FB | ICC-ES-PMG |
| 1-1/4" x 1" CPVC 80 Reducing Tee (SxSxS) | 9801168 | ICC-ES-PMG |
| 1-1/2" x 1/2" CPVC 80 Reducing Tee (SxSxS) | 9801209 | ICC-ES-PMG |
| 1-1/2" x 3/4" CPVC 80 Reducing Tee (SxSxS) | 9801210 | ICC-ES-PMG |
| 1-1/2" x 1" CPVC 80 Reducing Tee (SxSxS) | 9801211 | ICC-ES-PMG |
| 1-1/2" x 1-1/4" CPVC 80 Reducing Tee (SxSxS), Bushed | 9801212FB | ICC-ES-PMG |
| 2" x 1/2" CPVC 80 Reducing Tee (SxSxS) | 9801247 | ICC-ES-PMG |
| 2" x 3/4" CPVC 80 Reducing Tee (SxSxS) | 9801248 | ICC-ES-PMG |
| 2" x 1" CPVC 80 Reducing Tee (SxSxS) | 9801249 | ICC-ES-PMG |
| 2" x 1-1/4" CPVC 80 Reducing Tee (SxSxS), Bushed | 9801250FB | ICC-ES-PMG |
| 2" x 1-1/2" CPVC 80 Reducing Tee (SxSxS) | 9801251 | ICC-ES-PMG |
| 2-1/2" x 1/2" CPVC 80 Reducing Tee (SxSxS), Bushed | 9801287FB | ICC-ES-PMG |
| 2-1/2" x 3/4" CPVC 80 Reducing Tee (SxSxS), Bushed | 9801288FB | ICC-ES-PMG |
| 2-1/2" x 1" CPVC 80 Reducing Tee (SxSxS), Bushed | 9801289FB | ICC-ES-PMG |
| 2-1/2" x 1-1/4" CPVC 80 Reducing Tee (SxSxS), Bushed | 9801290FB | ICC-ES-PMG |
| 2-1/2" x 1-1/2" CPVC 80 Reducing Tee (SxSxS), Bushed | 9801291FB | ICC-ES-PMG |
| 2-1/2" x 2" CPVC 80 Reducing Tee (SxSxS) | 9801292 | ICC-ES-PMG |
| 3" x 1/2" CPVC 80 Reducing Tee (SxSxS), Bushed | 9801333FB | ICC-ES-PMG |
| 3" x 3/4" CPVC 80 Reducing Tee (SxSxS), Bushed | 9801334FB | ICC-ES-PMG |
| 3" x 1" CPVC 80 Reducing Tee (SxSxS), Bushed | 9801335FB | ICC-ES-PMG |
| 3" x 1-1/4" CPVC 80 Reducing Tee (SxSxS), Bushed | 9801336FB | ICC-ES-PMG |
| 3" x 1-1/2" CPVC 80 Reducing Tee (SxSxS), Bushed | 9801337FB | ICC-ES-PMG |
| 3" x 2" CPVC 80 Reducing Tee (SxSxS) | 9801338 | ICC-ES-PMG |
| 3" x 2-1/2" CPVC 80 Reducing Tee (SxSxS), Bushed | 9801339FB | ICC-ES-PMG |
| 4" x 1/2" CPVC 80 Reducing Tee (SxSxS), Bushed | 9801415FB | ICC-ES-PMG |
| 4" x 3/4" CPVC 80 Reducing Tee (SxSxS), Bushed | 9801416FB | ICC-ES-PMG |
| 4" x 1" CPVC 80 Reducing Tee (SxSxS), Bushed | 9801417FB | ICC-ES-PMG |
| 4" x 1-1/4" CPVC 80 Reducing Tee (SxSxS), Bushed | 9801418FB | ICC-ES-PMG |
| 4" x 1-1/2" CPVC 80 Reducing Tee (SxSxS), Bushed | 9801419FB | ICC-ES-PMG |
| 4" x 2" CPVC 80 Reducing Tee (SxSxS) | 9801420 | ICC-ES-PMG |
| 4" x 2-1/2" CPVC 80 Reducing Tee (SxSxS), Bushed | 9801421FB | ICC-ES-PMG |
| 4" x 3" CPVC 80 Reducing Tee (SxSxS) | 9801422 | ICC-ES-PMG |
| 6" x 1/2" CPVC 80 Reducing Tee (SxSxS), Bushed | 9801523FB | ICC-ES-PMG |
| 6" x 3/4" CPVC 80 Reducing Tee | 9801524FB | ICC-ES-PMG |

| | | |
|---|-----------|------------|
| (SxSxS), Bushed | | |
| 6" x 1" CPVC 80 Reducing Tee (SxSxS), Bushed | 9801525FB | ICC-ES-PMG |
| 6" x 1-1/4" CPVC 80 Reducing Tee (SxSxS), Bushed | 9801526FB | ICC-ES-PMG |
| 6" x 1-1/2" CPVC 80 Reducing Tee (SxSxS), Bushed | 9801527FB | ICC-ES-PMG |
| 6" x 2" CPVC 80 Reducing Tee (SxSxS) | 9801528 | ICC-ES-PMG |
| 6" x 2-1/2" CPVC 80 Reducing Tee (SxSxS), Bushed, 2 Step | 9801529FB | ICC-ES-PMG |
| 6" x 3" CPVC 80 Reducing Tee (SxSxS), Bushed | 9801530FB | ICC-ES-PMG |
| 6" x 4" CPVC 80 Reducing Tee (SxSxS) | 9801532 | ICC-ES-PMG |
| 8" x 3/4" CPVC 80 Reducing Tee (SxSxS), Bushed, 3 Step | 9801574FB | ICC-ES-PMG |
| 8" x 6" CPVC 80 Reducing Tee (SxSxS) | 9801585 | ICC-ES-PMG |

| Installation | Related applications |
|---|-----------------------------------|
| Make connections via solvent welding using primer and solvent cement designed specifically for Schedule 80 CPVC pipe and fittings. Refer to the Uponor ChlorFIT Manual or Uponor ChlorFIT Solvent Welding Instruction Sheet for complete details. | Domestic water Hydronic piping |

| Footnotes | Contact information | |
|-----------|---|---|
| - | Uponor Inc. 5925 148th Street West Apple Valley, MN 55124 T 800.321.4739 F 952.891.2008 | Uponor Ltd. 6510 Kennedy Road Mississauga, ON L5T 2X4 T 888.594.7726 F 800.638.9517 |