

ChlorFIT Fitting Coupling Reducing

Project Information

Job name:	Location:
Engineer:	Date submitted:
Contractor:	Submitted by:
Manufacturer's representative:	Approved by:

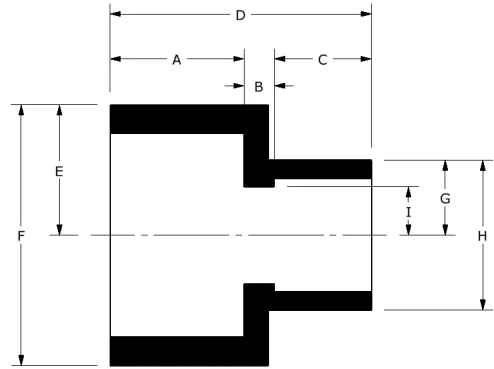
Technical data

Material CPVC

Product information and application use

Use Uponor ChlorFIT® Schedule 80 Corzan® CPVC Couplings in hot and cold potable-water systems as well as hydronic heating and cooling applications.

Corzan® is a registered trademark of Lubrizol Advanced Materials, Inc.



Part name	Part no.	A [Inch]	B [Inch]	C [Inch]	D [Inch]	E [Inch]	F [Inch]	G [Inch]	H [Inch]	I [Inch]	End Type 1
3/4" x 1/2" CPVC 80 Reducing Coupling (SxS)	9829101	1.047	0.11	0.922	2.079	0.755	1.51	0.64	1.28	0.28	Socket 3/4"
1" x 1/2" CPVC 80 Reducing Coupling (SxS)	9829130	1.188	0.1	0.922	2.21	0.925	1.85	0.64	1.28	0.28	Socket 1"
1" x 3/4" CPVC 80 Reducing Coupling (SxS)	9829131	1.134	0.117	1.009	2.26	0.928	1.857	0.763	1.526	0.41	Socket 1"
1-1/4" x 3/4" CPVC 80 Reducing Coupling (SxS), Bushed	9829167FB	1.272	0.686	1.012	2.97	1.044	2.088	1.09	2.18	0.82	Socket 1-1/4"
1-1/4" x 1" CPVC 80 Reducing Coupling (SxS), Bushed	9829168FB	1.272	0.567	1.148	2.987	1.044	2.088	1.089	2.178	0.525	Socket 1-1/4"
1-1/2" x 1/2" CPVC 80 Reducing Coupling (SxS), Bushed	9829209FB	1.394	0.108	1.151	2.654	1.302	2.603	0.928	1.855	0.526	Socket 1-1/2"
1-1/2" x 3/4" CPVC 80 Reducing Coupling (SxS), Bushed	9829210FB	1.394	0.52	1.022	2.937	1.302	2.603	0.928	1.855	0.411	Socket 1-1/2"
1-1/2" x 1" CPVC 80 Reducing Coupling (SxS)	9829211	1.438	0.124	1.188	2.75	1.25	2.5	0.925	1.85	0.525	Socket 1-1/2"
1-1/2" x 1-1/4" CPVC 80 Reducing Coupling (SxS)	9829212	1.438	0.1	1.312	2.85	1.25	2.5	1.065	2.13	0.645	Socket 1-1/2"
2" x 1/2" CPVC 80 Reducing Coupling (SxS), Bushed	9829247FB	1.69	0.316	1.147	3.153	1.587	3.174	0.881	1.762	0.554	Socket 2"
2" x 3/4" CPVC 80 Reducing Coupling (SxS), Bushed	9829248FB	1.69	0.316	1.147	3.153	1.587	3.174	0.881	1.762	0.554	Socket 2"
2" x 1" CPVC 80 Reducing Coupling (SxS)	9829249	1.562	0.355	1.133	3.05	1.52	3.04	0.875	1.75	0.565	Socket 2"
2" x 1-1/4" CPVC 80 Reducing Coupling (SxS)	9829250	1.562	0.126	1.312	3	1.52	3.04	1.065	2.13	0.75	Socket 2"
2" x 1-1/2" CPVC 80 Reducing Coupling (SxS)	9829251	1.562	0.107	1.381	3.05	1.52	3.04	1.252	2.504	0.76	Socket 2"
2-1/2" x 1/2" CPVC 80 Reducing Coupling (SxS), Bushed	9829287FB	1.822	0.918	0.903	3.643	1.813	3.627	1.195	2.39	0.307	Socket 2-1/2"
2-1/2" x 3/4" CPVC 80 Reducing Coupling (SxS), Bushed	9829288FB	1.822	0.814	1.007	3.643	1.813	3.627	1.23	2.459	0.411	Socket 2-1/2"
2-1/2" x 1" CPVC 80 Reducing Coupling (SxS), Bushed	9829289FB	1.759	0.687	1.141	3.586	1.81	3.62	1.063	2.125	0.52	Socket 2-1/2"
2-1/2" x 1-1/4" CPVC 80 Reducing Coupling (SxS), Bushed	9829290FB	1.822	0.589	1.272	3.683	1.813	3.627	1.23	2.459	0.687	Socket 2-1/2"
2-1/2" x 1-1/2" CPVC 80 Reducing Coupling (SxS)	9829291	1.759	0.14	1.381	3.28	1.75	3.5	1.19	2.38	0.875	Socket 2-1/2"
2-1/2" x 2" CPVC 80 Reducing Coupling (SxS), Bushed	9829292FB	1.789	0.649	1.63	4.067	1.744	3.488	1.772	3.545	1.03	Socket

3" x 1" CPVC 80 Reducing Coupling (SxS), Bushed	9829335FB	1.933	0.85	1.143	3.926	2.267	4.533	1.52	3.039	0.524	Socket 3"
3" x 1-1/2" CPVC 80 Reducing Coupling (SxS), Bushed	9829337FB	1.893	1.173	1.501	4.567	2.096	4.192	1.981	3.963	0.815	Socket 3"
3" x 2" CPVC 80 Reducing Coupling (SxS)	9829338	1.945	0.165	1.5	3.61	2.196	4.391	1.515	3.03	0.98	Socket 3"
3" x 2-1/2" CPVC 80 Reducing Coupling (SxS), Bushed	9829339FB	1.893	0.678	1.843	4.413	2.096	4.192	1.981	3.963	1.2	Socket 3"
4" x 1" CPVC 80 Reducing Coupling (SxS), Bushed	9829417FB	2.304	1.487	1.141	4.932	2.828	5.655	2.208	4.416	0.52	Socket 4"
4" x 1-1/2" CPVC 80 Reducing Coupling (SxS), Bushed	9829419FB	2.304	1.103	1.542	4.949	2.828	5.655	2.208	4.416	0.761	Socket 4"
4" x 2" CPVC 80 Reducing Coupling (SxS), Bushed	9829420FB	2.304	0.217	1.861	4.382	2.828	5.655	2.208	4.416	1.454	Socket 4"
4" x 2-1/2" CPVC 80 Reducing Coupling (SxS), Bushed	9829421FB	2.304	0.593	1.894	4.791	2.828	5.655	2.208	4.416	1.225	Socket 4"
4" x 3" CPVC 80 Reducing Coupling (SxS)	9829422	2.253	0.254	1.883	4.39	2.763	5.527	2.204	4.407	1.46	Socket 4"
6" x 1-1/2" CPVC 80 Reducing Coupling (SxS), Bushed, 3 Step	9829527FB	3.04	2.937	1.486	7.463	3.78	7.56	1.981	3.963	0.815	Socket 6"
6" x 2" CPVC 80 Reducing Coupling (SxS), Bushed	9829528FB	4.456	4.602	1.562	10.62	3.959	7.919	2.755	5.51	1	Socket 6"
6" x 2-1/2" CPVC 80 Reducing Coupling (SxS), Bushed, 2 Step	9829529FB	3.04	2.442	1.843	7.325	3.78	7.56	1.845	3.69	1.2	Socket 6"
6" x 3" CPVC 80 Reducing Coupling (SxS), Bushed	9829530FB	4.456	4.23	1.966	10.652	3.959	7.919	2.813	5.626	1.654	Socket 6"
6" x 4" CPVC 80 Reducing Coupling (SxS)	9829532	4.456	3.456	2.26	10.172	3.959	7.919	2.755	5.51	1.943	Socket 6"
8" x 4" CPVC 80 Reducing Coupling (SxS), Bushed	9829582FB	4.033	2.107	3.037	9.176	4.9	9.8	3.903	7.806	3.074	Socket 8"
8" x 6" CPVC 80 Reducing Coupling (SxS)	9829585	4.033	2.107	3.037	9.176	4.9	9.8	3.903	7.806	3.074	Socket 8"

Part name	Part no.	End Type 2	Operating Temperature 1 [°F]	Operating Temperature 2 [°F]	Weight per UOM [lbs/UOM]
3/4" x 1/2" CPVC 80 Reducing Coupling (SxS)	9829101	Socket 1/2"	73 °F (23 °C) at 690 psi (23 °C)	180 °F (82 °C) at 170 psi (82 °C)	0.1
1" x 1/2" CPVC 80 Reducing Coupling (SxS)	9829130	Socket 1/2"	73 °F (23 °C) at 630 psi (23 °C)	180 °F (82 °C) at 155 psi (82 °C)	0.14
1" x 3/4" CPVC 80 Reducing Coupling (SxS)	9829131	Socket 3/4"	73 °F (23 °C) at 630 psi (23 °C)	180 °F (82 °C) at 155 psi (82 °C)	0.15
1-1/4" x 3/4" CPVC 80 Reducing Coupling (SxS), Bushed	9829167FB	Socket 3/4"	73 °F (23 °C) at 520 psi (23 °C)	180 °F (82 °C) at 130 psi (82 °C)	0.18
1-1/4" x 1" CPVC 80 Reducing Coupling (SxS), Bushed	9829168FB	Socket 1"	73 °F (23 °C) at 520 psi (23 °C)	180 °F (82 °C) at 130 psi (82 °C)	0.37
1-1/2" x 1/2" CPVC 80 Reducing Coupling (SxS), Bushed	9829209FB	Socket 1/2"	73 °F (23 °C) at 470 psi (23 °C)	180 °F (82 °C) at 115 psi (82 °C)	0.23
1-1/2" x 3/4" CPVC 80 Reducing Coupling (SxS), Bushed	9829210FB	Socket 3/4"	73 °F (23 °C) at 470 psi (23 °C)	180 °F (82 °C) at 115 psi (82 °C)	0.94
1-1/2" x 1" CPVC 80 Reducing Coupling (SxS)	9829211	Socket 1"	73 °F (23 °C) at 470 psi (23 °C)	180 °F (82 °C) at 115 psi (82 °C)	0.29
1-1/2" x 1-1/4" CPVC 80 Reducing Coupling (SxS)	9829212	Socket 1-1/4"	73 °F (23 °C) at 470 psi (23 °C)	180 °F (82 °C) at 115 psi (82 °C)	0.29
2" x 1/2" CPVC 80 Reducing Coupling (SxS), Bushed	9829247FB	Socket 1/2"	73 °F (23 °C) at 400 psi (23 °C)	180 °F (82 °C) at 100 psi (82 °C)	0.3
2" x 3/4" CPVC 80 Reducing Coupling (SxS), Bushed	9829248FB	Socket 3/4"	73 °F (23 °C) at 400 psi (23 °C)	180 °F (82 °C) at 100 psi (82 °C)	0.61
2" x 1" CPVC 80 Reducing Coupling (SxS)	9829249	Socket 1"	73 °F (23 °C) at 400 psi (23 °C)	180 °F (82 °C) at 100 psi (82 °C)	0.62
2" x 1-1/4" CPVC 80 Reducing Coupling (SxS)	9829250	Socket 1-1/4"	73 °F (23 °C) at 400 psi (23 °C)	180 °F (82 °C) at 100 psi (82 °C)	0.71
2" x 1-1/2" CPVC 80 Reducing Coupling (SxS)	9829251	Socket 1-1/2"	73 °F (23 °C) at 400 psi (23 °C)	180 °F (82 °C) at 100 psi (82 °C)	0.71
2-1/2" x 1/2" CPVC 80 Reducing Coupling (SxS), Bushed	9829287FB	Socket 1/2"	73 °F (23 °C) at 420 psi (23 °C)	180 °F (82 °C) at 105 psi (82 °C)	0.66
2-1/2" x 3/4" CPVC 80 Reducing Coupling (SxS), Bushed	9829288FB	Socket 3/4"	73 °F (23 °C) at 420 psi (23 °C)	180 °F (82 °C) at 105 psi (82 °C)	0.67

2-1/2" x 1" CPVC 80 Reducing Coupling (SxS), Bushed	9829289FB	Socket 1"	73 °F (23 °C) at 420 psi (23 °C)	180 °F (82 °C) at 105 psi (82 °C)	0.64
2-1/2" x 1-1/4" CPVC 80 Reducing Coupling (SxS), Bushed	9829290FB	Socket 1-1/4"	73 °F (23 °C) at 420 psi (23 °C)	180 °F (82 °C) at 105 psi (82 °C)	0.59
2-1/2" x 1-1/2" CPVC 80 Reducing Coupling (SxS)	9829291	Socket 1-1/2"	73 °F (23 °C) at 420 psi (23 °C)	180 °F (82 °C) at 105 psi (82 °C)	0.8
2-1/2" x 2" CPVC 80 Reducing Coupling (SxS), Bushed	9829292FB	Socket 2"	73 °F (23 °C) at 420 psi (23 °C)	180 °F (82 °C) at 105 psi (82 °C)	1.2
3" x 1" CPVC 80 Reducing Coupling (SxS), Bushed	9829335FB	Socket 1"	73 °F (23 °C) at 370 psi (23 °C)	180 °F (82 °C) at 90 psi (82 °C)	0.7
3" x 1-1/2" CPVC 80 Reducing Coupling (SxS), Bushed	9829337FB	Socket 1-1/2"	73 °F (23 °C) at 370 psi (23 °C)	180 °F (82 °C) at 90 psi (82 °C)	0.93
3" x 2" CPVC 80 Reducing Coupling (SxS)	9829338	Socket 2"	73 °F (23 °C) at 370 psi (23 °C)	180 °F (82 °C) at 90 psi (82 °C)	1
3" x 2-1/2" CPVC 80 Reducing Coupling (SxS), Bushed	9829339FB	Socket 2-1/2"	73 °F (23 °C) at 370 psi (23 °C)	180 °F (82 °C) at 90 psi (82 °C)	1.56
4" x 1" CPVC 80 Reducing Coupling (SxS), Bushed	9829417FB	Socket 1"	73 °F (23 °C) at 320 psi (23 °C)	180 °F (82 °C) at 80 psi (82 °C)	2.43
4" x 1-1/2" CPVC 80 Reducing Coupling (SxS), Bushed	9829419FB	Socket 1-1/2"	73 °F (23 °C) at 320 psi (23 °C)	180 °F (82 °C) at 80 psi (82 °C)	2.56
4" x 2" CPVC 80 Reducing Coupling (SxS), Bushed	9829420FB	Socket 2"	73 °F (23 °C) at 320 psi (23 °C)	180 °F (82 °C) at 80 psi (82 °C)	2.61
4" x 2-1/2" CPVC 80 Reducing Coupling (SxS), Bushed	9829421FB	Socket 2-1/2"	73 °F (23 °C) at 320 psi (23 °C)	180 °F (82 °C) at 80 psi (82 °C)	2.33
4" x 3" CPVC 80 Reducing Coupling (SxS)	9829422	Socket 3"	73 °F (23 °C) at 320 psi (23 °C)	180 °F (82 °C) at 80 psi (82 °C)	1.82
6" x 1-1/2" CPVC 80 Reducing Coupling (SxS), Bushed, 3 Step	9829527FB	Socket 1-1/2"	73 °F (23 °C) at 280 psi (23 °C)	180 °F (82 °C) at 70 psi (82 °C)	8.23
6" x 2" CPVC 80 Reducing Coupling (SxS), Bushed	9829528FB	Socket 2"	73 °F (23 °C) at 280 psi (23 °C)	180 °F (82 °C) at 70 psi (82 °C)	2.09
6" x 2-1/2" CPVC 80 Reducing Coupling (SxS), Bushed, 2 Step	9829529FB	Socket 2-1/2"	73 °F (23 °C) at 280 psi (23 °C)	180 °F (82 °C) at 70 psi (82 °C)	8.23
6" x 3" CPVC 80 Reducing Coupling (SxS), Bushed	9829530FB	Socket 3"	73 °F (23 °C) at 280 psi (23 °C)	180 °F (82 °C) at 70 psi (82 °C)	8.23
6" x 4" CPVC 80 Reducing Coupling (SxS)	9829532	Socket 4"	73 °F (23 °C) at 280 psi (23 °C)	180 °F (82 °C) at 70 psi (82 °C)	7.3
8" x 4" CPVC 80 Reducing Coupling (SxS), Bushed	9829582FB	Socket 4"	73 °F (23 °C) at 250 psi (23 °C)	180 °F (82 °C) at 60 psi (82 °C)	13.44
8" x 6" CPVC 80 Reducing Coupling (SxS)	9829585	Socket 6"	73 °F (23 °C) at 250 psi (23 °C)	180 °F (82 °C) at 60 psi (82 °C)	8.23

Part name	Part no.	Codes	Standards	Listings
ChlorFIT Fitting Coupling Reducing	All	UPC IBC IRC IPC UMC NSPC IMC	ASTM F439 NSF/ANSI/CAN 61 NSF/ANSI 14	ULC NSFpw-G U.P.Code
In addition, the following parts have additional codes, standards, or listings:				
3/4" x 1/2" CPVC 80 Reducing Coupling (SxS)	9829101			ICC-ES-PMG
1" x 1/2" CPVC 80 Reducing Coupling (SxS)	9829130			ICC-ES-PMG
1" x 3/4" CPVC 80 Reducing Coupling (SxS)	9829131			ICC-ES-PMG
1-1/4" x 3/4" CPVC 80 Reducing Coupling (SxS), Bushed	9829167FB			ICC-ES-PMG
1-1/4" x 1" CPVC 80 Reducing Coupling (SxS), Bushed	9829168FB			ICC-ES-PMG
1-1/2" x 1/2" CPVC 80 Reducing Coupling (SxS), Bushed	9829209FB			ICC-ES-PMG
1-1/2" x 3/4" CPVC 80 Reducing Coupling (SxS), Bushed	9829210FB			ICC-ES-PMG
1-1/2" x 1" CPVC 80 Reducing Coupling (SxS)	9829211			ICC-ES-PMG
1-1/2" x 1-1/4" CPVC 80 Reducing Coupling (SxS)	9829212			ICC-ES-PMG
2" x 1/2" CPVC 80 Reducing Coupling (SxS), Bushed	9829247FB			ICC-ES-PMG
2" x 3/4" CPVC 80 Reducing Coupling (SxS), Bushed	9829248FB			ICC-ES-PMG
2" x 1" CPVC 80 Reducing Coupling	9829249			ICC-ES-PMG

(SxS)		
2" x 1-1/4" CPVC 80 Reducing Coupling (SxS)	9829250	ICC-ES-PMG
2" x 1-1/2" CPVC 80 Reducing Coupling (SxS)	9829251	ICC-ES-PMG
2-1/2" x 1/2" CPVC 80 Reducing Coupling (SxS), Bushed	9829287FB	ICC-ES-PMG
2-1/2" x 3/4" CPVC 80 Reducing Coupling (SxS), Bushed	9829288FB	ICC-ES-PMG
2-1/2" x 1" CPVC 80 Reducing Coupling (SxS), Bushed	9829289FB	ICC-ES-PMG
2-1/2" x 1-1/4" CPVC 80 Reducing Coupling (SxS), Bushed	9829290FB	ICC-ES-PMG
2-1/2" x 1-1/2" CPVC 80 Reducing Coupling (SxS)	9829291	ICC-ES-PMG
2-1/2" x 2" CPVC 80 Reducing Coupling (SxS), Bushed	9829292FB	ICC-ES-PMG
3" x 1" CPVC 80 Reducing Coupling (SxS), Bushed	9829335FB	ICC-ES-PMG
3" x 1-1/2" CPVC 80 Reducing Coupling (SxS), Bushed	9829337FB	ICC-ES-PMG
3" x 2" CPVC 80 Reducing Coupling (SxS)	9829338	ICC-ES-PMG
3" x 2-1/2" CPVC 80 Reducing Coupling (SxS), Bushed	9829339FB	ICC-ES-PMG
4" x 1" CPVC 80 Reducing Coupling (SxS), Bushed	9829417FB	ICC-ES-PMG
4" x 1-1/2" CPVC 80 Reducing Coupling (SxS), Bushed	9829419FB	ICC-ES-PMG
4" x 2" CPVC 80 Reducing Coupling (SxS), Bushed	9829420FB	ICC-ES-PMG
4" x 2-1/2" CPVC 80 Reducing Coupling (SxS), Bushed	9829421FB	ICC-ES-PMG
4" x 3" CPVC 80 Reducing Coupling (SxS)	9829422	ICC-ES-PMG
6" x 1-1/2" CPVC 80 Reducing Coupling (SxS), Bushed, 3 Step	9829527FB	ICC-ES-PMG
6" x 2" CPVC 80 Reducing Coupling (SxS), Bushed	9829528FB	ICC-ES-PMG
6" x 2-1/2" CPVC 80 Reducing Coupling (SxS), Bushed, 2 Step	9829529FB	ICC-ES-PMG
6" x 3" CPVC 80 Reducing Coupling (SxS), Bushed	9829530FB	ICC-ES-PMG
6" x 4" CPVC 80 Reducing Coupling (SxS)	9829532	ICC-ES-PMG

Installation	Related applications
Make connections via solvent welding using primer and solvent cement designed specifically for Schedule 80 CPVC pipe and fittings. Refer to the Uponor ChlorFIT Manual or Uponor ChlorFIT Solvent Welding Instruction Sheet for complete details.	Domestic water Hydronic piping

Footnotes	Contact information
-	<p style="text-align: center;">Uponor Inc. 5925 148th Street West Apple Valley, MN 55124 T 800.321.4739 F 952.891.2008</p> <p style="text-align: center;">Uponor Ltd. 6510 Kennedy Road Mississauga, ON L5T 2X4 T 888.594.7726 F 800.638.9517</p>