

# ChlorFIT Reducer Bushing

## Project Information

Job name:	Location:
Engineer:	Date submitted:
Contractor:	Submitted by:
Manufacturer's representative:	Approved by:

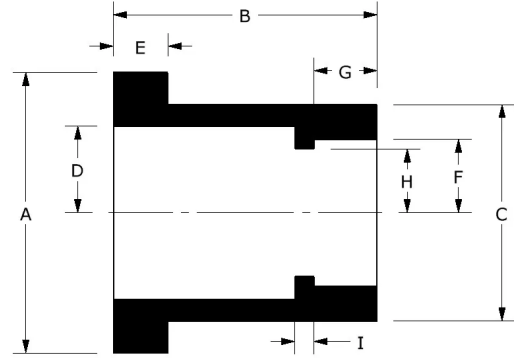
## Technical data

Material CPVC

## Product information and application use

Use Uponor ChlorFIT® Schedule 80 Corzan® CPVC Reducer Bushings in hot and cold potable-water systems as well as hydronic heating and cooling applications.

*Corzan® is a registered trademark of Lubrizol Advanced Materials, Inc.*



Part name	Part no.	A [Inch]	B [Inch]	C [Inch]	D [Inch]	E [Inch]	F [Inch]	G [Inch]	H [Inch]	I [Inch]	End Type 1
3/4" x 1/2" CPVC 80 Reducing Bushing, Flush Style (SpgxS)	9837101	1.363	1.281	1.05	0.42	0.265	0.356	0.306	0.31	0.093	Spigot 3/4"
1" x 1/2" CPVC 80 Reducing Bushing, Flush Style (SpgxS)	9837130	1.732	1.13	1.315	0.42	0.265	0.472	0.128	0.313	0.12	Spigot 1"
1" x 3/4" CPVC 80 Reducing Bushing, Flush Style (SpgxS)	9837131	1.732	1.13	1.315	0.525	0.265	0.472	0.002	0.418	0.12	Spigot 1"
1-1/4" x 1/2" CPVC 80 Reducing Bushing, Flush Style (SpgxS)	9837166	2.026	1.563	1.66	0.42	0.288	0.631	0.496	0.311	0.178	Spigot 1-1/4"
1-1/4" x 3/4" CPVC 80 Reducing Bushing, Flush Style (SpgxS)	9837167	2.183	1.53	1.66	0.525	0.28	0.639	0.402	0.412	0.12	Spigot 1-1/4"
1-1/4" x 1" CPVC 80 Reducing Bushing, Flush Style (SpgxS)	9837168	2.183	1.531	1.66	0.657	0.28	0.64	0.278	0.524	0.12	Spigot 1-1/4"
1-1/2" x 1/2" CPVC 80 Reducing Bushing, Flush Style (SpgxS)	9837209	2.413	1.656	1.9	0.311	0.28	0.75	0.654	0.311	1.002	Spigot 1-1/2"
1-1/2" x 3/4" CPVC 80 Reducing Bushing, Flush Style (SpgxS)	9837210	2.413	1.665	1.9	0.525	0.28	0.743	0.537	0.412	0.12	Spigot 1-1/2"
1-1/2" x 1" CPVC 80 Reducing Bushing, Flush Style (SpgxS)	9837211	2.465	1.665	1.9	0.657	0.28	0.743	0.412	0.525	0.12	Spigot 1-1/2"
1-1/2" x 1-1/4" CPVC 80 Reducing Bushing, Flush Style (SpgxS)	9837212	2.442	1.67	1.9	0.83	0.28	0.75	0.292	0.69	0.12	Spigot 1-1/2"
2" x 1/2" CPVC 80 Reducing Bushing, Flush Style (SpgxS)	9837247	2.979	1.78	2.375	0.42	0.28	0.97	0.778	0.311	0.12	Spigot 2"
2" x 3/4" CPVC 80 Reducing Bushing, Flush Style (SpgxS)	9837248	2.956	1.781	2.375	0.525	0.28	0.97	0.653	0.412	0.12	Spigot 2"
2" x 1" CPVC 80 Reducing Bushing, Flush Style (SpgxS)	9837249	2.956	1.781	2.375	0.657	0.28	0.97	0.528	0.524	0.12	Spigot 2"
2" x 1-1/4" CPVC 80 Reducing Bushing, Flush Style (SpgxS)	9837250	2.979	1.8	2.375	0.83	0.28	0.97	0.422	0.69	0.12	Spigot 2"
2" x 1-1/2" CPVC 80 Reducing Bushing, Flush Style (SpgxS)	9837251	2.956	1.78	2.375	0.95	0.28	0.97	0.277	0.738	0.12	Spigot 2"
2-1/2" x 1-1/2" CPVC 80 Reducing Bushing, Flush Style (SpgxS)	9837291	3.533	2.2	2.875	0.95	0.37	1.148	0.697	0.785	0.12	Spigot 2-1/2"
2-1/2" x 2" CPVC 80 Reducing Bushing, Flush Style (SpgxS)	9837292	3.533	2.078	2.875	1.188	0.25	1.23	0.369	1.01	0.2	Spigot 2-1/2"
3" x 1" CPVC 80 Reducing Bushing, Flush Style (SpgxS)	9837335	4.272	2.415	3.5	0.657	0.457	1.436	1.078	0.487	0.195	Spigot 3"
3" x 1-1/2" CPVC 80 Reducing Bushing, Flush Style (SpgxS)	9837337	4.261	2.4	3.5	0.95	0.45	1.435	0.817	0.815	0.2	Spigot 3"
3" x 2" CPVC 80 Reducing Bushing, Flush Style	9837338	4.261	2.4	3.5	1.188	0.38	1.435	0.691	1.01	0.2	Spigot

(SpgxS)												3"
3" x 2-1/2" CPVC 80 Reducing Bushing, Flush Style (SpgxS)	9837339	4.261	2.313	3.5	1.438	0.38	1.54	0.323	1.2	0.2		Spigot 3"
4" x 2" CPVC 80 Reducing Bushing, Flush Style (SpgxS)	9837420	5.485	2.708	4.5	1.188	0.38	1.895	0.949	1	0.25		Spigot 4"
4" x 2-1/2" CPVC 80 Reducing Bushing, Flush Style (SpgxS), Bushed	9837421FB	5.626	3.043	4.5	1.437	0.684	1.81	0.517	1.654	0.633		Spigot 4"
4" x 3" CPVC 80 Reducing Bushing, Flush Style (SpgxS)	9837422	5.485	2.688	4.5	1.75	0.38	1.99	0.548	1.5	0.25		Spigot 4"
6" x 2-1/2" CPVC 80 Reducing Bushing, Flush Style (SpgxS), Bushed	9837529FB	8.011	3.957	6.625	1.437	0.816	2.848	1.459	1.558	0.605		Spigot 6"
6" x 3" CPVC 80 Reducing Bushing, Flush Style (SpgxS)	9837530	7.944	3.59	6.625	1.75	0.496	2.89	1.45	1.56	0.25		Spigot 6"
6" x 4" CPVC 80 Reducing Bushing, Flush Style (SpgxS)	9837532	7.944	3.59	6.625	2.25	0.496	2.89	1.07	2	0.25		Spigot 6"
8" x 4" CPVC 80 Reducing Bushing, Flush Style (SpgxS), Bushed, 2 Step	9837582FB	10.476	5.357	8.625	2.25	1.261	3.702	1.178	3.054	1.933		Spigot 8"
8" x 6" CPVC 80 Reducing Bushing, Flush Style (SpgxS)	9837585	10.254	4.66	8.625	3.313	0.56	3.78	1.26	3.125	0.38		Spigot 8"

Part name	Part no.	End Type 2	Operating Temperature 1 [°F]	Operating Temperature 2 [°F]	Weight per UOM [lbs/UOM]
3/4" x 1/2" CPVC 80 Reducing Bushing, Flush Style (SpgxS)	9837101	Socket 1/2"	73 °F (23 °C) at 690 psi (23 °C)	180 °F (82 °C) at 170 psi (82 °C)	0.03
1" x 1/2" CPVC 80 Reducing Bushing, Flush Style (SpgxS)	9837130	Socket 1/2"	73 °F (23 °C) at 630 psi (23 °C)	180 °F (82 °C) at 155 psi (82 °C)	0.07
1" x 3/4" CPVC 80 Reducing Bushing, Flush Style (SpgxS)	9837131	Socket 3/4"	73 °F (23 °C) at 630 psi (23 °C)	180 °F (82 °C) at 155 psi (82 °C)	0.05
1-1/4" x 1/2" CPVC 80 Reducing Bushing, Flush Style (SpgxS)	9837166	Socket 1/2"	73 °F (23 °C) at 520 psi (23 °C)	180 °F (82 °C) at 130 psi (82 °C)	0.11
1-1/4" x 3/4" CPVC 80 Reducing Bushing, Flush Style (SpgxS)	9837167	Socket 3/4"	73 °F (23 °C) at 520 psi (23 °C)	180 °F (82 °C) at 130 psi (82 °C)	0.11
1-1/4" x 1" CPVC 80 Reducing Bushing, Flush Style (SpgxS)	9837168	Socket 1"	73 °F (23 °C) at 520 psi (23 °C)	180 °F (82 °C) at 130 psi (82 °C)	0.11
1-1/2" x 1/2" CPVC 80 Reducing Bushing, Flush Style (SpgxS)	9837209	Socket 1/2"	73 °F (23 °C) at 470 psi (23 °C)	180 °F (82 °C) at 115 psi (82 °C)	0.16
1-1/2" x 3/4" CPVC 80 Reducing Bushing, Flush Style (SpgxS)	9837210	Socket 3/4"	73 °F (23 °C) at 470 psi (23 °C)	180 °F (82 °C) at 115 psi (82 °C)	0.17
1-1/2" x 1" CPVC 80 Reducing Bushing, Flush Style (SpgxS)	9837211	Socket 1"	73 °F (23 °C) at 470 psi (23 °C)	180 °F (82 °C) at 115 psi (82 °C)	0.14
1-1/2" x 1-1/4" CPVC 80 Reducing Bushing, Flush Style (SpgxS)	9837212	Socket 1-1/4"	73 °F (23 °C) at 470 psi (23 °C)	180 °F (82 °C) at 115 psi (82 °C)	0.09
2" x 1/2" CPVC 80 Reducing Bushing, Flush Style (SpgxS)	9837247	Socket 1/2"	73 °F (23 °C) at 400 psi (23 °C)	180 °F (82 °C) at 100 psi (82 °C)	0.23
2" x 3/4" CPVC 80 Reducing Bushing, Flush Style (SpgxS)	9837248	Socket 3/4"	73 °F (23 °C) at 400 psi (23 °C)	180 °F (82 °C) at 100 psi (82 °C)	0.24
2" x 1" CPVC 80 Reducing Bushing, Flush Style (SpgxS)	9837249	Socket 1"	73 °F (23 °C) at 400 psi (23 °C)	180 °F (82 °C) at 100 psi (82 °C)	0.24
2" x 1-1/4" CPVC 80 Reducing Bushing, Flush Style (SpgxS)	9837250	Socket 1-1/4"	73 °F (23 °C) at 400 psi (23 °C)	180 °F (82 °C) at 100 psi (82 °C)	0.22
2" x 1-1/2" CPVC 80 Reducing Bushing, Flush Style (SpgxS)	9837251	Socket 1-1/2"	73 °F (23 °C) at 400 psi (23 °C)	180 °F (82 °C) at 100 psi (82 °C)	0.18
2-1/2" x 1-1/2" CPVC 80 Reducing Bushing, Flush Style (SpgxS)	9837291	Socket 1-1/2"	73 °F (23 °C) at 420 psi (23 °C)	180 °F (82 °C) at 105 psi (82 °C)	0.39
2-1/2" x 2" CPVC 80 Reducing Bushing, Flush Style (SpgxS)	9837292	Socket 2"	73 °F (23 °C) at 420 psi (23 °C)	180 °F (82 °C) at 105 psi (82 °C)	0.26
3" x 1" CPVC 80 Reducing Bushing, Flush Style (SpgxS)	9837335	Socket 1"	73 °F (23 °C) at 370 psi (23 °C)	180 °F (82 °C) at 90 psi (82 °C)	1.03
3" x 1-1/2" CPVC 80 Reducing Bushing, Flush Style (SpgxS)	9837337	Socket 1-1/2"	73 °F (23 °C) at 370 psi (23 °C)	180 °F (82 °C) at 90 psi (82 °C)	0.74
3" x 2" CPVC 80 Reducing Bushing, Flush Style (SpgxS)	9837338	Socket 2"	73 °F (23 °C) at 370 psi (23 °C)	180 °F (82 °C) at 90 psi (82 °C)	0.79
3" x 2-1/2" CPVC 80 Reducing Bushing, Flush Style (SpgxS)	9837339	Socket 2-1/2"	73 °F (23 °C) at 370 psi (23 °C)	180 °F (82 °C) at 90 psi (82 °C)	0.51
4" x 2" CPVC 80 Reducing Bushing, Flush Style (SpgxS)	9837420	Socket 2"	73 °F (23 °C) at 320 psi (23 °C)	180 °F (82 °C) at 80 psi (82 °C)	1.26
4" x 2-1/2" CPVC 80 Reducing Bushing, Flush Style (SpgxS), Bushed	9837421FB	Socket 2-1/2"	73 °F (23 °C) at 320 psi (23 °C)	180 °F (82 °C) at 80 psi (82 °C)	1.44

4" x 3" CPVC 80 Reducing Bushing, Flush Style (SpgxS)	9837422	Socket 3"	73 °F (23 °C) at 320 psi (23 °C)	180 °F (82 °C) at 80 psi (82 °C)	0.93
6" x 2-1/2" CPVC 80 Reducing Bushing, Flush Style (SpgxS), Bushed	9837529FB	Socket 2-1/2"	73 °F (23 °C) at 280 psi (23 °C)	180 °F (82 °C) at 70 psi (82 °C)	3.99
6" x 3" CPVC 80 Reducing Bushing, Flush Style (SpgxS)	9837530	Socket 3"	73 °F (23 °C) at 280 psi (23 °C)	180 °F (82 °C) at 70 psi (82 °C)	3.48
6" x 4" CPVC 80 Reducing Bushing, Flush Style (SpgxS)	9837532	Socket 4"	73 °F (23 °C) at 280 psi (23 °C)	180 °F (82 °C) at 70 psi (82 °C)	3.92
8" x 4" CPVC 80 Reducing Bushing, Flush Style (SpgxS), Bushed, 2 Step	9837582FB	Socket 4"	73 °F (23 °C) at 250 psi (23 °C)	180 °F (82 °C) at 60 psi (82 °C)	8.57
8" x 6" CPVC 80 Reducing Bushing, Flush Style (SpgxS)	9837585	Socket 6"	73 °F (23 °C) at 250 psi (23 °C)	180 °F (82 °C) at 60 psi (82 °C)	4.59

Part name	Part no.	Codes	Standards	Listings
ChlorFIT Reducer Bushing	All	UPC IBC IRC IPC UMC NSPC IMC	ASTM F439 NSF/ANSI/CAN 61 NSF/ANSI 14	ULC NSFpw-G U.P.Code
In addition, the following parts have additional codes, standards, or listings:				
3/4" x 1/2" CPVC 80 Reducing Bushing, Flush Style (SpgxS)	9837101			ICC-ES-PMG
1" x 1/2" CPVC 80 Reducing Bushing, Flush Style (SpgxS)	9837130			ICC-ES-PMG
1" x 3/4" CPVC 80 Reducing Bushing, Flush Style (SpgxS)	9837131			ICC-ES-PMG
1-1/4" x 1/2" CPVC 80 Reducing Bushing, Flush Style (SpgxS)	9837166			ICC-ES-PMG
1-1/4" x 3/4" CPVC 80 Reducing Bushing, Flush Style (SpgxS)	9837167			ICC-ES-PMG
1-1/4" x 1" CPVC 80 Reducing Bushing, Flush Style (SpgxS)	9837168			ICC-ES-PMG
1-1/2" x 1/2" CPVC 80 Reducing Bushing, Flush Style (SpgxS)	9837209			ICC-ES-PMG
1-1/2" x 3/4" CPVC 80 Reducing Bushing, Flush Style (SpgxS)	9837210			ICC-ES-PMG
1-1/2" x 1" CPVC 80 Reducing Bushing, Flush Style (SpgxS)	9837211			ICC-ES-PMG
1-1/2" x 1-1/4" CPVC 80 Reducing Bushing, Flush Style (SpgxS)	9837212			ICC-ES-PMG
2" x 1/2" CPVC 80 Reducing Bushing, Flush Style (SpgxS)	9837247			ICC-ES-PMG
2" x 3/4" CPVC 80 Reducing Bushing, Flush Style (SpgxS)	9837248			ICC-ES-PMG
2" x 1" CPVC 80 Reducing Bushing, Flush Style (SpgxS)	9837249			ICC-ES-PMG
2" x 1-1/4" CPVC 80 Reducing Bushing, Flush Style (SpgxS)	9837250			ICC-ES-PMG
2" x 1-1/2" CPVC 80 Reducing Bushing, Flush Style (SpgxS)	9837251			ICC-ES-PMG
2-1/2" x 1-1/2" CPVC 80 Reducing Bushing, Flush Style (SpgxS)	9837291			ICC-ES-PMG
2-1/2" x 2" CPVC 80 Reducing Bushing, Flush Style (SpgxS)	9837292			ICC-ES-PMG
3" x 1" CPVC 80 Reducing Bushing, Flush Style (SpgxS)	9837335			ICC-ES-PMG
3" x 1-1/2" CPVC 80 Reducing Bushing, Flush Style (SpgxS)	9837337			ICC-ES-PMG
3" x 2" CPVC 80 Reducing Bushing, Flush Style (SpgxS)	9837338			ICC-ES-PMG
3" x 2-1/2" CPVC 80 Reducing Bushing, Flush Style (SpgxS)	9837339			ICC-ES-PMG
4" x 2" CPVC 80 Reducing Bushing, Flush Style (SpgxS)	9837420			ICC-ES-PMG
4" x 2-1/2" CPVC 80 Reducing Bushing, Flush Style (SpgxS), Bushed	9837421FB			ICC-ES-PMG
4" x 3" CPVC 80 Reducing Bushing, Flush Style (SpgxS)	9837422			ICC-ES-PMG
6" x 2-1/2" CPVC 80 Reducing Bushing, Flush Style (SpgxS), Bushed	9837529FB			ICC-ES-PMG
6" x 3" CPVC 80 Reducing Bushing, Flush Style (SpgxS)	9837530			ICC-ES-PMG
6" x 4" CPVC 80 Reducing Bushing, Flush Style (SpgxS)	9837532			ICC-ES-PMG

#### Installation

Make connections via solvent welding using primer and solvent cement designed specifically for Schedule 80 CPVC pipe and fittings. Refer to the Uponor ChlorFIT Manual or Uponor ChlorFIT Solvent Welding Instruction Sheet for complete details.

#### Related applications

Domestic water  
Hydronic piping

Uponor Inc.  
5925 148th Street West  
Apple Valley, MN 55124  
T 800.321.4739  
F 952.891.2008

Uponor Ltd.  
6510 Kennedy Road  
Mississauga, ON L5T 2X4  
T 888.594.7726  
F 800.638.9517

---