

565 Butterfly Valve Lever Lug

Project Information

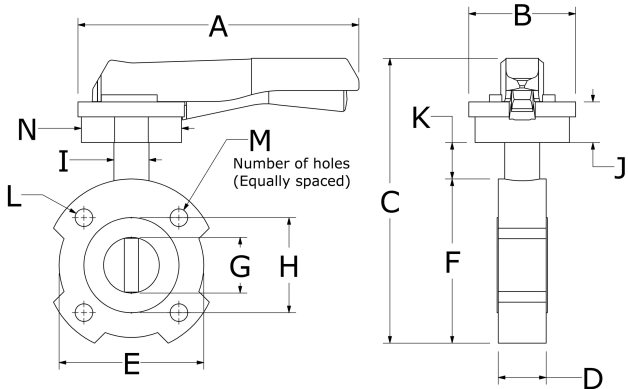
Job name:	Location:
Engineer:	Date submitted:
Contractor:	Submitted by:
Manufacturer's representative:	Approved by:

Technical data

Material	Engineered Polymer
Prop 65 label required?	Yes

Product information and application use

Use 565 Lever Lug Butterfly Valves in Schedule 80 CPVC piping systems for isolation in domestic water, hydronic hot-water heating, or chilled water applications.



Part name	Part no.	A [inch]	B [inch]	C [inch]	D [inch]	E [inch]	F [inch]	G [inch]	H [inch]	I [inch]	J [inch]
2" 565 Lever Lug Butterfly Valve with EPDM Seal	199576000	9.941	3.78	10.083	1.693	5.118	5.811	1.972	3.366	1.24	1.437
2-1/2" 565 Lever Lug Butterfly Valve with EPDM Seal	199576001	9.941	3.78	10.746	1.811	5.906	6.626	2.445	4.154	1.24	1.437
3" 565 Lever Lug Butterfly Valve with EPDM Seal	199576002	9.941	3.78	11.402	1.811	6.772	7.335	3.035	4.823	1.24	1.437
4" 565 Lever Lug Butterfly Valve with EPDM Seal	199576003	11.909	3.78	12.807	2.047	7.874	8.531	3.823	5.61	1.516	1.437
5" 565 Lever Lug Butterfly Valve with EPDM Seal	199576004	11.909	3.78	13.879	2.205	8.78	9.657	4.807	6.673	1.516	1.437
6" 565 Lever Lug Butterfly Valve with EPDM Seal	199576005	14.469	3.78	14.703	2.205	9.961	10.665	5.772	7.657	1.693	1.437
8" 565 Lever Lug Butterfly Valve with EPDM Seal	199576006	14.469	3.78	16.634	2.362	11.949	12.945	7.835	9.764	1.693	1.437

Part name	Part no.	K [inch]	L [inch]	M [inch]	N [inch]	End Type 1	Operating Temperature 1 [°F]	Weight per UOM [lbs/UOM]
2" 565 Lever Lug Butterfly Valve with EPDM Seal	199576000	1.291	0.625	4	3.543	LUG 2"	73 °F (23 °C) at 232 psi (23 °C)	4.49
2-1/2" 565 Lever Lug Butterfly Valve with EPDM Seal	199576001	1.157	0.625	4	3.543	LUG 2-1/2"	73 °F (23 °C) at 232 psi (23 °C)	5.19
3" 565 Lever Lug Butterfly Valve with EPDM Seal	199576002	1.087	0.625	8	3.543	LUG 3"	73 °F (23 °C) at 232 psi (23 °C)	6.28
4" 565 Lever Lug Butterfly Valve with EPDM Seal	199576003	1.295	0.625	8	3.543	LUG 4"	73 °F (23 °C) at 232 psi (23 °C)	9.14
5" 565 Lever Lug Butterfly Valve with EPDM Seal	199576004	1.26	0.75	8	3.543	LUG 5"	73 °F (23 °C) at 232 psi (23 °C)	11.15
6" 565 Lever Lug Butterfly Valve with EPDM Seal	199576005	1.083	0.75	8	3.543	LUG 6"	73 °F (23 °C) at 232 psi (23 °C)	13.46
8" 565 Lever Lug Butterfly Valve with EPDM Seal	199576006	0.709	0.75	8	3.543	LUG 8"	73 °F (23 °C) at 145 psi (23 °C)	17.32

Part name	Part no.	Codes	Standards	Listings
565 Butterfly Valve Lever Lug	All	UPC IMC IPC IBC IRC UMC NSPC	NSF/ANSI/CAN 61 NSF/ANSI/CAN 372 ISO 9393-2 EN 12266-1 EN ISO 16136 ISO 7005 PN10/16 EN 1092 PN10/16 DIN 2501 PN10/16 BS 4504 PN10/16 BS 1560: 1989 Class 125/150 JIS B2220 10K JIS B2239 10K ANSI/ASME	NSF-61-372

Installation		Related applications	
Ensure pipes are aligned and flanges are clean. Provide sufficient distance between flange ends and properly place the valve, aligning the bolt holes with the flanges. Position the valve disc slightly open (5 to 10 degrees) to avoid obstructions. Ensure the disc can open and close completely. Tighten the flange screws crosswise to the specified tightening torque. If using stainless-steel screws, pretreat thread with suitable assembly paste. Perform a functional test by closing the valve completely and opening it again.		Domestic Water Hydronic Piping	
Footnotes		Contact information	
-		Uponor Inc. 5925 148th Street West Apple Valley, MN 55124 T 800.321.4739 F 952.891.2008	Uponor Ltd. 6510 Kennedy Road Mississauga, ON L5T 2X4 T 888.594.7726 F 800.638.9517