

# ProPEX lead-free (LF) brass transition ball valve - Flange

## Project information

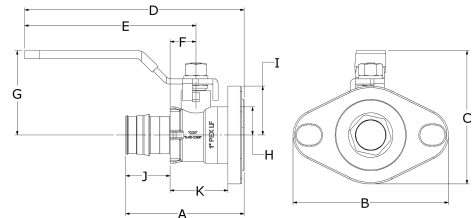
Job name:	Location:
Engineer:	Date submitted:
Contractor:	Submitted by:
Manufacturer's representative:	Approved by:

## Technical data

Material	LF Brass
Cold working pressure	250 psi
Temp/pressure ratings	200 °F (93 °C) at 200 psi (13.8 bar)
Prop 65 label required?	Yes

## Product information and application use

These full-port ball valves with stainless-steel stems provide reliable, high-flow performance and allow contractors to speed installations in tight spaces for greater jobsite productivity while offering engineers optimal hybrid design opportunities to meet pressure, temperature, and space requirements



Part name	Part no.	A [inch]	B [inch]	C [inch]	D [inch]	E [inch]	F [inch]	G [inch]	H [inch]	I [inch]	J [inch]
ProPEX LF Brass Transition Ball Valve (full port) SS Ball and Stem 3/4" PEX x 3/4" Flange	LFT4947575SS	2.598	4.125	3.086	4.555	3.425	0.524	1.791	0.62	1.295	0.945
ProPEX LF Brass Transition Ball Valve (full port) SS Ball and Stem 1" PEX x 1" Flange	LFT4941010SS	3.146	4.125	3.531	5.827	4.547	0.685	2.236	0.748	1.295	1.181
ProPEX LF Brass Transition Ball Valve (full port) SS Ball and Stem 1 1/4" PEX x 1 1/4" Flange	LFT4941313SS	3.748	4.125	3.691	6.03	4.547	0.821	2.396	0.915	1.295	1.445

Part name	Part no.	K [inch]	Cv	End Type 1	End Type 2	Weight per UOM [lbs/UOM]
ProPEX LF Brass Transition Ball Valve (full port) SS Ball and Stem 3/4" PEX x 3/4" Flange	LFT4947575SS	1.24	14	ProPEX 3/4"	Flange 3/4"	1.02
ProPEX LF Brass Transition Ball Valve (full port) SS Ball and Stem 1" PEX x 1" Flange	LFT4941010SS	1.335	24.2	ProPEX 1"	Flange 1"	1.45
ProPEX LF Brass Transition Ball Valve (full port) SS Ball and Stem 1 1/4" PEX x 1 1/4" Flange	LFT4941313SS	1.594	40.4	ProPEX 1-1/4"	Flange 1-1/4"	1.89

Part name	Part no.	Codes	Standards	Listings
ProPEX lead-free (LF) brass transition ball valve - Flange	All	UPC IBC IRC IPC NPC of Canada UMC IMC	ASTM F877 NSF/ANSI/CAN 372 NSF/ANSI 359 ASTM F1960 CSA B137.5 NSF/ANSI/CAN 61 NSF/ANSI 14	cNSFus-pw-G U.P.Code

In addition, the following parts have additional codes, standards, or listings:

ProPEX LF Brass Transition Ball Valve (full port) SS Ball and Stem 3/4" PEX x 3/4" Flange	LFT4947575SS
ProPEX LF Brass Transition Ball Valve (full port) SS Ball and Stem 1 1/4" PEX x 1 1/4" Flange	LFT4941313SS

## Installation

Use ProPEX LF brass transition ball valves for threaded, press, and flange connections in domestic water and mechanical HVAC piping applications.

## Related applications

-

## Footnotes

-

## Contact information

Uponor Inc.  
5925 148th Street West  
Apple Valley, MN 55124  
T 800.321.4739  
F 952.891.2008

Uponor Ltd.  
6510 Kennedy Road  
Mississauga, ON L5T 2X4  
T 888.594.7726  
F 800.638.9517