

ProPEX brass male threaded adapters

Project information

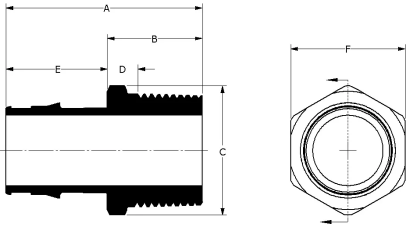
|                                |                 |
|--------------------------------|-----------------|
| Job name:                      | Location:       |
| Engineer:                      | Date submitted: |
| Contractor:                    | Submitted by:   |
| Manufacturer's representative: | Approved by:    |

Technical data

|                         |                                     |
|-------------------------|-------------------------------------|
| Temp/pressure ratings   | 73 °F (23 °C) at 160 psi (11 bar)   |
|                         | 180 °F (82 °C) at 100 psi (6.9 bar) |
|                         | 200 °F (93 °C) at 80 psi (5.5 bar)  |
| Prop 65 label required? | Yes                                 |

Product information and application use

ProPEX® male threaded adapters connect Uponor PEX pipe to male NPT threads for use in hydronic heating and cooling systems. One end of the adapter is manufactured with Uponor ProPEX fittings for connection to Wirsbo hePEX™ tubing and the other end is manufactured to adapt female threaded connections. These adapters are not safe for direct burial in soil. Note: Not for potable use.



Note: Temperature and pressure ratings stated are hydrostatic ratings. For domestic hot-water (DHW) and DHW recirculation installations, operating conditions should not exceed 140°F (60°C) at 80 psi (5.5 bar) in accordance with ASTM F2023. For additional information regarding application-specific temperature and pressure ratings, refer to the Uponor PEX Piping Systems Design and Installation Manual.

| Part name  | Part no.  | A<br>[inch] | B<br>[inch] | C<br>[inch] | D<br>[inch] | E<br>[inch] | F<br>[inch] | G<br>[inch] | Cv    | Equivalent<br>length<br>through<br>[ft] | Material<br>group |
|--|-----------|-------------|-------------|-------------|-------------|-------------|-------------|-------------|-------|---|-------------------|
| ProPEX Brass Male Threaded Adapter, 1 1/2" PEX x 1 1/2" NPT    | Q5521515  | 2.829       | 1.125       | 2.202       | 0.402       | 1.704       | 1.92        | 1.101       | 39.3  | 5.5                                     | Brass             |
| ProPEX Brass Male Threaded Adapter, 1 1/4" PEX x 1 1/4" NPT    | Q5521313  | 2.51        | 1.065       | 1.924       | 0.358       | 1.445       | 1.68        | 0.962       | 32.4  | 4.2                                     | Brass             |
| ProPEX Brass Male Threaded Adapter, 1" PEX x 1" NPT            | Q5521010  | 2.236       | 1.055       | 1.526       | 0.372       | 1.181       | 1.335       | 0.763       | 19.9  | 3.2                                     | Brass             |
| ProPEX Brass Male Threaded Adapter, 1" PEX x 3/4" NPT          | Q5521075  | 2.136       | 0.955       | 1.37        | 0.409       | 1.181       | 1.2         | 0.685       | 17.8  | 1.2                                     | Brass             |
| ProPEX Brass Male Threaded Adapter, 1/2" PEX x 1/2" NPT        | Q5525050  | 1.614       | 0.905       | 0.978       | 0.371       | 0.709       | 0.86        | 0.489       | 5     | 2.3                                     | Brass             |
| ProPEX Brass Male Threaded Adapter, 2" PEX x 2" NPT            | Q5522020  | 3.432       | 1.285       | 2.75        | 0.528       | 2.147       | 2.395       | 1.375       | 78.6  | 5.61                                    | Brass             |
| ProPEX Brass Male Threaded Adapter, 3/4" PEX x 1" NPT          | Q5527510  | 2.05        | 1.105       | 1.526       | 0.422       | 0.945       | 1.335       | 0.763       | 10.9  | 3.4                                     | Brass             |
| ProPEX Brass Male Threaded Adapter, 3/4" PEX x 1/2" NPT        | Q5527550  | 1.85        | 0.905       | 1.22        | 0.359       | 0.945       | 1.07        | 0.61        | 17.5  | 1.52                                    | Brass             |
| ProPEX Brass Male Threaded Adapter, 3/4" PEX x 3/4" NPT        | Q5527575  | 1.85        | 0.905       | 1.22        | 0.359       | 0.945       | 1.07        | 0.61        | 11.3  | 2.7                                     | Brass             |
| ProPEX Brass Male Threaded Adapter, 5/8" PEX x 3/4" NPT        | Q4526375  | 1.941       | 1.075       | 1.299       | 0.425       | 0.866       | 1.125       | 0.65        | -     | -                                       | Brass             |
| ProPEX LF Brass Male Threaded Adapter, 1/2" PEX x 3/4" NPT     | LF4525075 | 1.639       | 0.93        | 1.206       | 0.384       | 0.709       | 1.07        | 0.603       | 6.2   | -                                       | LF Brass          |
| ProPEX LF Brass Male Threaded Adapter, 2 1/2" PEX x 2 1/2" NPT | LF4522525 | 4.83        | 2           | 3.279       | 0.863       | 2.83        | 2.9         | 1.639       | 227.3 | 1.5                                     | LF Brass          |
| ProPEX LF Brass Male Threaded Adapter, 3" PEX x 3" NPT         | LF4523030 | 5.38        | 2           | 3.994       | 0.8         | 3.38        | 3.52        | 1.997       | 187.5 | 9.1                                     | LF Brass          |
| ProPEX LF Brass Male Threaded Adapter, 3/8" PEX x 1/2" NPT     | LF4523850 | 1.521       | 0.93        | 0.963       | 0.396       | 0.591       | 0.86        | 0.481       | 5     | 2.3                                     | LF Brass          |

| Part name   | Part no. | End Type 1    | End Type 2  | Weight per UOM<br>[lbs/UOM] |
|---|----------|---------------|-------------|-----------------------------|
| ProPEX Brass Male Threaded Adapter, 1 1/2" PEX x 1 1/2" NPT | Q5521515 | ProPEX 1-1/2" | MNPT 1-1/2" | 0.66                        |
| ProPEX Brass Male Threaded Adapter, 1 1/4" PEX x 1 1/4" NPT | Q5521313 | ProPEX 1-1/4" | MNPT 1-1/4" | 0.65                        |
| ProPEX Brass Male Threaded Adapter, 1" PEX x 1" NPT         | Q5521010 | ProPEX 1"     | MNPT 1"     | 0.45                        |
| ProPEX Brass Male Threaded Adapter, 1" PEX x 3/4" NPT       | Q5521075 | ProPEX 1"     | MNPT 3/4"   | 0.26                        |

|  |           |               |             |      |
|--|-----------|---------------|-------------|------|
| ProPEX Brass Male Threaded Adapter, 1/2" PEX x 1/2" NPT        | Q5525050  | ProPEX 1/2"   | MNPT 1/2"   | 0.12 |
| ProPEX Brass Male Threaded Adapter, 2" PEX x 2" NPT            | Q5522020  | ProPEX 2"     | MNPT 2"     | 2    |
| ProPEX Brass Male Threaded Adapter, 3/4" PEX x 1" NPT          | Q5527510  | ProPEX 3/4"   | MNPT 1"     | 0.3  |
| ProPEX Brass Male Threaded Adapter, 3/4" PEX x 1/2" NPT        | Q5527550  | ProPEX 3/4"   | MNPT 1/2"   | 0.16 |
| ProPEX Brass Male Threaded Adapter, 3/4" PEX x 3/4" NPT        | Q5527575  | ProPEX 3/4"   | MNPT 3/4"   | 0.19 |
| ProPEX Brass Male Threaded Adapter, 5/8" PEX x 3/4" NPT        | Q4526375  | ProPEX 5/8"   | MNPT 3/4"   | 0.18 |
| ProPEX LF Brass Male Threaded Adapter, 1/2" PEX x 3/4" NPT     | LF4525075 | ProPEX 1/2"   | MNPT 3/4"   | -    |
| ProPEX LF Brass Male Threaded Adapter, 2 1/2" PEX x 2 1/2" NPT | LF4522525 | ProPEX 2-1/2" | MNPT 2-1/2" | 3.1  |
| ProPEX LF Brass Male Threaded Adapter, 3" PEX x 3" NPT         | LF4523030 | ProPEX 3"     | MNPT 3"     | 4.9  |
| ProPEX LF Brass Male Threaded Adapter, 3/8" PEX x 1/2" NPT     | LF4523850 | ProPEX 3/8"   | MNPT 1/2"   | 0.11 |

| Part name   | Part no.  | Codes                         | Standards  | Listings                |
|---|-----------|-------------------------------|--|-------------------------|
| ProPEX brass male threaded adapters   | All       | IBC IRC NPC of Canada UMC IMC | ASTM F877 ASTM F1960 CSA B137.5                      | IAPMO-ES ICC-ES-PMG     |
| In addition, the following parts have additional codes, standards, or listings: |           |                               |  |                         |
| ProPEX Brass Male Threaded Adapter, 1 1/2" PEX x 1 1/2" NPT                     | Q5521515  |                               | NSF-14   | cNSFus-rfh              |
| ProPEX Brass Male Threaded Adapter, 1 1/4" PEX x 1 1/4" NPT                     | Q5521313  |                               | NSF-14   | cNSFus-rfh              |
| ProPEX Brass Male Threaded Adapter, 1" PEX x 1" NPT                             | Q5521010  |                               | NSF-14   | cNSFus-rfh              |
| ProPEX Brass Male Threaded Adapter, 1" PEX x 3/4" NPT                           | Q5521075  |                               | NSF-14   | cNSFus-rfh              |
| ProPEX Brass Male Threaded Adapter, 1/2" PEX x 1/2" NPT                         | Q5525050  |                               | NSF-14   | cNSFus-rfh              |
| ProPEX Brass Male Threaded Adapter, 2" PEX x 2" NPT                             | Q5522020  |                               | NSF-14   | cNSFus-rfh              |
| ProPEX Brass Male Threaded Adapter, 3/4" PEX x 1" NPT                           | Q5527510  |                               | NSF-14   | cNSFus-rfh              |
| ProPEX Brass Male Threaded Adapter, 3/4" PEX x 1/2" NPT                         | Q5527550  |                               | NSF-14   | cNSFus-rfh              |
| ProPEX Brass Male Threaded Adapter, 3/4" PEX x 3/4" NPT                         | Q5527575  |                               | NSF-14   | cNSFus-rfh              |
| ProPEX Brass Male Threaded Adapter, 5/8" PEX x 3/4" NPT                         | Q4526375  |                               | NSF-14   | cNSFus-rfh              |
| ProPEX LF Brass Male Threaded Adapter, 1/2" PEX x 3/4" NPT                      | LF4525075 | UPC IPC NSPC                  | NSF/ANSI/CAN 372 UL 1821 NSF/ANSI/CAN 61 NSF/ANSI 14 | cNSFus-pw-fs-G U.P.Code |
| ProPEX LF Brass Male Threaded Adapter, 2 1/2" PEX x 2 1/2" NPT                  | LF4522525 | UPC IPC NSPC                  | NSF-372 NSF-61 NSF-14                                | cNSFus-pw-G U.P.Code    |
| ProPEX LF Brass Male Threaded Adapter, 3" PEX x 3" NPT                          | LF4523030 | UPC IPC NSPC                  | NSF-372 NSF-61 NSF-14                                | cNSFus-pw-G U.P.Code    |
| ProPEX LF Brass Male Threaded Adapter, 3/8" PEX x 1/2" NPT                      | LF4523850 | UPC IPC NSPC                  | NSF-372 NSF-61 NSF-14                                | cNSFus-pw-G U.P.Code    |

| Installation  | Related applications                |
|---|-------------------------------------|
| Use the appropriate ProPEX ring for Uponor PEX pipe (sold separately). Refer to the Uponor Radiant Installation Handbook, Complete Design Assistance Manual (CDAM), or Hydronic Piping Design Assistance Manual (HPDAM) for additional information. | Radiant Heating and Cooling Systems |
|   | Permafrost Protection Systems       |
|   | Turf Conditioning Systems           |
|   | Hydronic Piping Systems             |

| Footnotes | Contact information  |
|-----------|--|
| -         | <div> <div> Uponor Inc.<br/> 5925 148th Street West<br/> Apple Valley, MN 55124<br/> T 800.321.4739<br/> F 952.891.2008 </div> <div> Uponor Ltd.<br/> 6510 Kennedy Road<br/> Mississauga, ON L5T 2X4<br/> T 888.594.7726<br/> F 800.638.9517 </div> </div> |