

ProPEX lead-free (LF) brass male threaded adapters

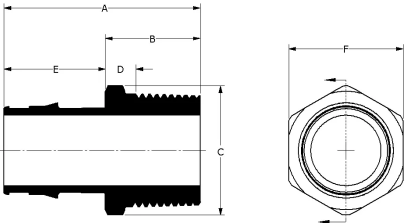
| Project information | |
|--------------------------------|-----------------|
| Job name: | Location: |
| Engineer: | Date submitted: |
| Contractor: | Submitted by: |
| Manufacturer's representative: | Approved by: |

| Technical data | |
|-------------------------|-------------------------------------|
| Material | LF Brass |
| Temp/pressure ratings | 73 °F (23 °C) at 160 psi (11 bar) |
| | 180 °F (82 °C) at 100 psi (6.9 bar) |
| | 200 °F (93 °C) at 80 psi (5.5 bar) |
| Prop 65 label required? | Yes |

Product information and application use

ProPEX® lead-free (LF) brass male threaded adapters connect Uponor PEX tubing to male NPT threads for use in hot and cold domestic potable water systems, residential fire safety and hydronic radiant heating and cooling systems. These adapters are safe for direct burial in soil.

Note: Temperature and pressure ratings stated are hydrostatic ratings. For domestic hot-water (DHW) and DHW recirculation installations, operating conditions should not exceed 140°F (60°C) at 80 psi (5.5 bar) in accordance with ASTM F2023. For additional information regarding application-specific temperature and pressure ratings, refer to the Uponor PEX Piping Systems Design and Installation Manual.



| Part name | Part no. | A [inch] | B [inch] | C [inch] | D [inch] | E [inch] | F [inch] | G [inch] | Cv | Equivalent length through [ft] | End Type 1 |
|----------------------------------------------------------------|-----------|-------------|-------------|-------------|-------------|-------------|-------------|-------------|-------|-----------------------------------------|------------------|
| ProPEX LF Brass Male Threaded Adapter, 3/4" PEX x 3/4" NPT | LF4527575 | 1.945 | 1 | 1.196 | 0.454 | 0.945 | 1.07 | 0.598 | 11.3 | 2.7 | ProPEX 3/4" |
| ProPEX LF Brass Male Threaded Adapter, 1" PEX x 1" NPT | LF4521010 | 2.286 | 1.105 | 1.502 | 0.422 | 1.181 | 1.335 | 0.751 | 19.9 | 3.2 | ProPEX 1" |
| ProPEX LF Brass Male Threaded Adapter, 1 1/4" PEX x 1 1/4" NPT | LF4521313 | 2.55 | 1.105 | 1.925 | 0.398 | 1.445 | 1.68 | 0.963 | 32.4 | 4.2 | ProPEX 1-1/4" |
| ProPEX LF Brass Male Threaded Adapter, 1/2" PEX x 1/2" NPT | LF4525050 | 1.639 | 0.93 | 0.963 | 0.396 | 0.709 | 0.86 | 0.481 | 5 | 2.3 | ProPEX 1/2" |
| ProPEX LF Brass Male Threaded Adapter, 3/4" PEX x 1" NPT | LF4527510 | 2.045 | 1.1 | 1.511 | 0.417 | 0.945 | 1.335 | 0.756 | 10.9 | 3.4 | ProPEX 3/4" |
| ProPEX LF Brass Male Threaded Adapter, 1" PEX x 3/4" NPT | LF4521075 | 2.201 | 1.02 | 1.404 | 0.474 | 1.181 | 1.25 | 0.702 | 17.8 | 1.2 | ProPEX 1" |
| ProPEX LF Brass Male Threaded Adapter, 1 1/2" PEX x 1 1/2" NPT | LF4521515 | 2.854 | 1.15 | 2.167 | 0.426 | 1.704 | 1.92 | 1.083 | 39.3 | 5.5 | ProPEX 1-1/2" |
| ProPEX LF Brass Male Threaded Adapter, 2" PEX x 2" NPT | LF4522020 | 3.543 | 1.396 | 2.6 | 0.639 | 2.147 | 2.375 | 1.3 | 78.6 | 5.61 | ProPEX 2" |
| ProPEX LF Brass Male Threaded Adapter, 1/2" PEX x 3/4" NPT | LF4525075 | 1.639 | 0.93 | 1.206 | 0.384 | 0.709 | 1.07 | 0.603 | 6.2 | - | ProPEX 1/2" |
| ProPEX LF Brass Male Threaded Adapter, 2 1/2" PEX x 2 1/2" NPT | LF4522525 | 4.83 | 2 | 3.279 | 0.863 | 2.83 | 2.9 | 1.639 | 227.3 | 1.5 | ProPEX 2-1/2" |
| ProPEX LF Brass Male Threaded Adapter, 3" PEX x 3" NPT | LF4523030 | 5.38 | 2 | 3.994 | 0.8 | 3.38 | 3.52 | 1.997 | 187.5 | 9.1 | ProPEX 3" |
| ProPEX LF Brass Male Threaded Adapter, 3/8" PEX x 1/2" NPT | LF4523850 | 1.521 | 0.93 | 0.963 | 0.396 | 0.591 | 0.86 | 0.481 | 5 | 2.3 | ProPEX 3/8" |

| Part name | Part no. | End Type 2 | Weight per UOM [lbs/UOM] |
|----------------------------------------------------------------|-----------|-------------|--------------------------|
| ProPEX LF Brass Male Threaded Adapter, 3/4" PEX x 3/4" NPT | LF4527575 | MNPT 3/4" | 0.2 |
| ProPEX LF Brass Male Threaded Adapter, 1" PEX x 1" NPT | LF4521010 | MNPT 1" | 0.38 |
| ProPEX LF Brass Male Threaded Adapter, 1 1/4" PEX x 1 1/4" NPT | LF4521313 | MNPT 1-1/4" | 0.62 |
| ProPEX LF Brass Male Threaded Adapter, 1/2" PEX x 1/2" NPT | LF4525050 | MNPT 1/2" | 0.12 |
| ProPEX LF Brass Male Threaded Adapter, 3/4" PEX x 1" NPT | LF4527510 | MNPT 1" | 0.32 |
| ProPEX LF Brass Male Threaded Adapter, 1" PEX x 3/4" NPT | LF4521075 | MNPT 3/4" | 0.26 |
| ProPEX LF Brass Male Threaded Adapter, 1 1/2" PEX x 1 | LF4521515 | MNPT 1-1/2" | 0.8 |

| | | | | |
|----------------------------------------------------------------|-----------|-------------|------|--|
| 1/2" NPT | | | | |
| ProPEX LF Brass Male Threaded Adapter, 2" PEX x 2" NPT | LF4522020 | MNPT 2" | 1.45 | |
| ProPEX LF Brass Male Threaded Adapter, 1/2" PEX x 3/4" NPT | LF4525075 | MNPT 3/4" | - | |
| ProPEX LF Brass Male Threaded Adapter, 2 1/2" PEX x 2 1/2" NPT | LF4522525 | MNPT 2-1/2" | 3.1 | |
| ProPEX LF Brass Male Threaded Adapter, 3" PEX x 3" NPT | LF4523030 | MNPT 3" | 4.9 | |
| ProPEX LF Brass Male Threaded Adapter, 3/8" PEX x 1/2" NPT | LF4523850 | MNPT 1/2" | 0.11 | |

| Part name | Part no. | Codes | Standards | Listings |
|---------------------------------------------------------------------------------|-----------|--------------------------------------------|------------------------------------------------------|------------------------------|
| ProPEX lead-free (LF) brass male threaded adapters | All | UPC IBC IRC IPC NPC of Canada UMC NSPC IMC | ASTM F877 ASTM F1960 CSA B137.5 | IAPMO-ES ICC-ES-PMG U.P.Code |
| In addition, the following parts have additional codes, standards, or listings: | | | | |
| ProPEX LF Brass Male Threaded Adapter, 3/4" PEX x 3/4" NPT | LF4527575 | | NSF-372 NSF-61 NSF-14 | cNSFus-pw-G |
| ProPEX LF Brass Male Threaded Adapter, 1" PEX x 1" NPT | LF4521010 | | NSF-372 UL 1821 NSF-61 NSF-14 | cNSFus-pw-fs-G |
| ProPEX LF Brass Male Threaded Adapter, 1 1/4" PEX x 1 1/4" NPT | LF4521313 | | NSF-372 UL 1821 NSF-61 NSF-14 | cNSFus-pw-fs-G |
| ProPEX LF Brass Male Threaded Adapter, 1/2" PEX x 1/2" NPT | LF4525050 | | NSF-372 NSF-61 NSF-14 | cNSFus-pw-G |
| ProPEX LF Brass Male Threaded Adapter, 3/4" PEX x 1" NPT | LF4527510 | | NSF-372 NSF-61 NSF-14 | cNSFus-pw-G |
| ProPEX LF Brass Male Threaded Adapter, 1" PEX x 3/4" NPT | LF4521075 | | NSF-372 NSF-61 NSF-14 | cNSFus-pw-G |
| ProPEX LF Brass Male Threaded Adapter, 1 1/2" PEX x 1 1/2" NPT | LF4521515 | | NSF-372 NSF-61 NSF-14 | cNSFus-pw-G |
| ProPEX LF Brass Male Threaded Adapter, 2" PEX x 2" NPT | LF4522020 | | NSF-372 NSF-61 NSF-14 | cNSFus-pw-G |
| ProPEX LF Brass Male Threaded Adapter, 1/2" PEX x 3/4" NPT | LF4525075 | | NSF/ANSI/CAN 372 UL 1821 NSF/ANSI/CAN 61 NSF/ANSI 14 | cNSFus-pw-fs-G |
| ProPEX LF Brass Male Threaded Adapter, 2 1/2" PEX x 2 1/2" NPT | LF4522525 | | NSF-372 NSF-61 NSF-14 | cNSFus-pw-G |
| ProPEX LF Brass Male Threaded Adapter, 3" PEX x 3" NPT | LF4523030 | | NSF-372 NSF-61 NSF-14 | cNSFus-pw-G |
| ProPEX LF Brass Male Threaded Adapter, 3/8" PEX x 1/2" NPT | LF4523850 | | NSF-372 NSF-61 NSF-14 | cNSFus-pw-G |

| Installation | Related applications |
|---------------------------------------------------------------------------------------------------------------------------------------------------------------------------------------------------------------------------------------------|-------------------------------------|
| Use the appropriate ProPEX Ring for PEX-a tubing. Refer to the Uponor Professional Plumbing Installation Guide, AquaSAFE™ Residential Fire Sprinkler Installation Guide or Uponor Radiant Installation Handbook for additional information. | PEX-a Plumbing Systems |
| | Radiant Heating and Cooling Systems |
| | Permafrost Protection Systems |
| | Turf Conditioning Systems |
| | AquaSAFE™ Fire Safety Systems |

| Footnotes | Contact information |
|-----------|------------------------------------------------------------------------------------------------------------------------------------------------------------------------------------------------------------------------------------------------------------|
| - | <div> <div> Uponor Inc. 5925 148th Street West Apple Valley, MN 55124 T 800.321.4739 F 952.891.2008 </div> <div> Uponor Ltd. 6510 Kennedy Road Mississauga, ON L5T 2X4 T 888.594.7726 F 800.638.9517 </div> </div> |