

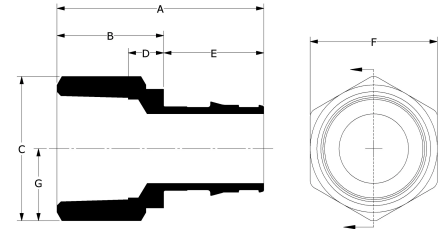
ProPEX lead-free (LF) brass female threaded adapters

Project Information

| | |
|---------------------------------|-----------------|
| Job name : | Location : |
| Engineer : | Date submitted: |
| Contractor : | Submitted by: |
| Manufacturer's representative : | Approved by : |

Technical Data

| | |
|-------------------------|--|
| Material | LF Brass |
| End type 1 | ProPEX 1" inch mm |
| End type 2 | FNPT 1" inch mm |
| Temp/pressure ratings | 73 °f (23 °C) at 160 psi (11 bar) 180 °f (82 °C) at 100 psi (6.9 bar) 200 °f (93 °C) at 80 psi (5.5 bar) |
| Prop 65 label required? | Yes |



Product information and application use

The ProPEX® Lead-free Brass Female Threaded Adapter connects Uponor PEX-a tubing to female NPT threads. Use these fittings in hot and cold domestic potable water systems, residential fire sprinkler systems or hydronic radiant heating and cooling systems. One end of the adapter is manufactured with the Uponor ProPEX fitting for connections to Wirsbo hePEX™ tubing or Uponor AquaPEX® tubing. The other end of the adapter connects to copper. These adapters are safe for direct burial in soil.

| Part name | Part no. | A [inch] | B [inch] | C [inch] | D [inch] | E [inch] | F [inch] | G [inch] | Weight per UOM [lbs/UOM] |
|--|-----------|----------|----------|----------|----------|----------|----------|----------|--------------------------|
| ProPEX LF Brass Female Threaded Adapter, 1" PEX x 1" NPT | LF4571010 | 2.441 | 1.26 | 1.732 | 0.419 | 1.181 | 1.5 | 0.866 | 0.42 |
| ProPEX LF Brass Female Threaded Adapter, 1 1/4" PEX x 1 1/4" NPT | LF4571313 | 2.565 | 1.12 | 2.309 | 0.413 | 1.445 | 2.0 | 1.155 | 0.73 |
| ProPEX LF Brass Female Threaded Adapter, 1 1/2" PEX x 1 1/2" NPT | LF4571515 | 2.864 | 1.16 | 2.598 | 0.436 | 1.704 | 2.25 | 1.299 | 0.95 |
| ProPEX LF Brass Female Threaded Adapter, 2" PEX x 2" NPT | LF4572020 | 3.547 | 1.4 | 3.464 | 0.703 | 2.147 | 3.0 | 1.732 | 2.23 |
| ProPEX LF Brass Female Threaded Adapter, 1/2" PEX x 1/2" NPT | LF4575050 | 1.569 | 0.86 | 1.155 | 0.325 | 0.709 | 1.0 | 0.577 | 0.14 |
| ProPEX LF Brass Female Threaded Adapter, 1/2" PEX x 3/4" NPT | LF4575075 | 1.629 | 0.92 | 1.371 | 0.367 | 0.709 | 1.187 | 0.685 | 0.18 |
| ProPEX LF Brass Female Threaded Adapter, 3/4" PEX x 1" NPT | LF4577510 | 2.205 | 1.26 | 1.732 | 0.599 | 0.945 | 1.5 | 0.866 | 0.4 |
| ProPEX LF Brass Female Threaded Adapter, 3/4" PEX x 3/4" NPT | LF4577575 | 1.865 | 0.92 | 1.371 | 0.366 | 0.945 | 1.187 | 0.685 | 0.2 |

Installation

Use the appropriate ProPEX Ring for PEX-a tubing. Refer to the Uponor AquaPEX® Professional Plumbing Installation Guide, AquaSAFE™ Residential Fire Sprinkler Installation Guide or Uponor Radiant Installation Handbook for additional information.

Related applications

- PEX-a Plumbing Systems
- Radiant Heating and Cooling Systems
- Permafrost Protection Systems
- Turf Conditioning Systems
- AquaSAFE™ Fire Safety Systems

Codes Standards Listings

| | | |
|--|--|---|
| UPC IBC IRC IPC NPC of Canada UMC NSPC IMC | NSF-372 ASTM F877 ASTM F1960 CSA B137.5 NSF-61 NSF-14* | IAPMO-ES ICC-ES-PMG cNSFus-pw-G U.P.Code* |
|--|--|---|

Trademark Information Contact information

ProPEX® is a registered trademark of Uponor Inc. ProPEX™ is a trademark of Uponor Ltd.
* Some SKUs in this family have additional codes, standards, or listings. Please see uponor.com for complete information.

Uponor Inc.
5925 148th Street West
Apple Valley, MN 55124
T 800.321.4739
F 952.891.2008

Uponor Ltd.
6510 Kennedy Road
Mississauga, ON L5T 2X4
T 888.594.7726
F 800.636.9517