

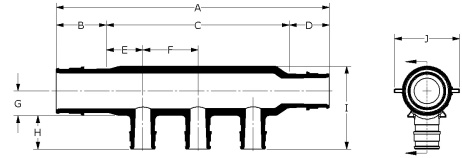
EP flow-through multi-port horizontal tees

Project Information

Job name :	Location :
Engineer :	Date submitted:
Contractor :	Submitted by:
Manufacturer's representative :	Approved by :

Technical data

Material	Engineered Polymer
Loop Cv	2.9 Cv
End type 1	ProPEX 3/4"
End type 2	ProPEX 3/4"
End type 3	ProPEX 3/4"
End type 4	ProPEX 1/2"
Temp/pressure ratings	73 °F (23 °C) at 160 psi (11 bar) 180 °F (82 °C) at 100 psi (6.9 bar) 200 °F (93 °C) at 80 psi (5.5 bar)



Product Information and application use

Engineered polymer (EP) flow-through multi-port horizontal tees are used in hot and cold domestic potable water distribution systems. The tees feature 3/4" ProPEX® inlets with 1/2" ProPEX outlets.

Part name	Part no.	A [inch]	B [inch]	C [inch]	D [inch]	E [inch]	F [inch]	G [inch]	H [inch]	I [inch]	J [inch]
EP Flow-through Multi-port Horizontal Tee, 4 (1/2") outlets, 3/4" x 3/4" x 3/4" ProPEX	Q2247577	8.66	0.955	6.75	0.955	0.688	1.25	0.467	0.719	1.87	1.18

Part name	Part no.	Cv Through	Weight per UOM [lbs/UOM]	Equivalent length branch [ft]	Equivalent length through [ft]
EP Flow-through Multi-port Horizontal Tee, 4 (1/2") outlets, 3/4" x 3/4" x 3/4" ProPEX	Q2247577	13.8	0.12	8.34	1.91

Installation

Use any product designed to mount 1" copper pipe as a mounting bracket. For more information, refer to the Uponor Piping Systems Installation Guide

Related applications

PEX-a Plumbing Systems

Codes

UPC|IBC|IRC|IPC|NPC of Canada|UMC|NSPC|IMC

Standards

ASTM E814|ULC S115|ASTM F877|ASTM F1960|CSA B137.5|ULC S102.2|ASTM E119|UL 263|NSF-61|ULC S101|NSF-14

Listings

IAPMO-ES|HUD MR 1269|ICC-ES-PMG|cNSFus-pw|UL|U.P.Code|cQA|us P321

Trademark information

ProPEX® is a registered trademark of Uponor Inc. ProPEX™ is a trademark of Uponor Ltd.

Contact information

Uponor Inc.
5925 148th Street West
Apple Valley, MN 55124
T 800.321.4739
F 952.891.2008

Uponor Ltd.
6510 Kennedy Road
Mississauga, ON L5T 2X4
T 888.594.7726
F 800.636.9517