

# ProPEX EP couplings

Submittal information

Date submitted:

## Project Information

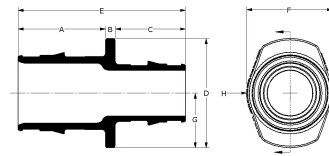
|                                 |                 |
|---------------------------------|-----------------|
| Job name :                      | Location :      |
| Engineer :                      | Date submitted: |
| Contractor :                    | Submitted by:   |
| Manufacturer's representative : | Approved by :   |

## Technical Data

|                        |  |
|------------------------|--|
| Material               | Engineered Polymer   |
| Temp./pressure ratings | 73°F (23°C) at 160 psi (11 bar)<br>180°F (82°C) at 100 psi (6.9 bar)<br>200°F (93°C) at 80 psi (5.5 bar) |

## Product information and application use

ProPEX® engineered polymer (EP) coupling is available for use in hot and cold domestic potable water distribution, residential fire safety and radiant heating and cooling systems. Each end of the coupling is manufactured with an Uponor ProPEX fitting for connections to Uponor AquaPEX® or Wirsbo hePEX™ tubing.



| Part name                                   | Part no. | A [inch] | B [inch] | C [inch] | D [inch] | E [inch] | F [inch] | G [inch] | H [inch] | Cv    | Weight per UOM [lbs/UOM] |
|---|----------|----------|----------|----------|----------|----------|----------|----------|----------|-------|--------------------------|
| ProPEX EP Coupling, 1" PEX x 1" PEX         | Q4771010 | 1.191    | 0.125    | 1.191    | 1.48     | 2.507    | 1.165    | 0.74     | 0.59     | 33.8  | 0.04                     |
| ProPEX EP Coupling, 1 1/4" PEX x 3/4" PEX   | Q4771307 | 1.459    | 0.15     | 0.963    | 1.74     | 2.573    | 1.38     | 0.87     | 0.69     | 10.9  | 0.05                     |
| ProPEX EP Coupling, 1 1/4" PEX x 1" PEX     | Q4771310 | 1.459    | 0.15     | 1.198    | 1.74     | 2.807    | 1.38     | 0.87     | 0.69     | 22.3  | 0.06                     |
| ProPEX EP Coupling, 1 1/4" PEX x 1 1/4" PEX | Q4771313 | 1.459    | 0.15     | 1.459    | 1.74     | 3.069    | 1.38     | 0.87     | 0.69     | 53.3  | 0.07                     |
| ProPEX EP Coupling, 1 1/2" PEX x 3/4" PEX   | Q4771507 | 1.719    | 0.15     | 0.965    | 1.92     | 2.834    | 1.53     | 0.96     | 0.765    | 10.8  | 0.07                     |
| ProPEX EP Coupling, 1 1/2" PEX x 1" PEX     | Q4771510 | 1.719    | 0.15     | 1.178    | 1.92     | 3.048    | 1.52     | 0.96     | 0.76     | 19    | 0.08                     |
| ProPEX EP Coupling, 1 1/2" PEX x 1 1/4" PEX | Q4771513 | 1.719    | 0.15     | 1.461    | 1.92     | 3.33     | 1.53     | 0.96     | 0.765    | 33.9  | 0.09                     |
| ProPEX EP Coupling, 1 1/2" PEX x 1 1/2" PEX | Q4771515 | 1.719    | 0.15     | 1.719    | 1.92     | 3.588    | 1.53     | 0.96     | 0.765    | 69.5  | 0.1                      |
| ProPEX EP Coupling, 2" PEX x 1 1/2" PEX     | Q4772015 | 2.164    | 0.25     | 1.726    | 2.7      | 4.14     | 2.2      | 1.35     | 1.1      | 45.2  | 0.19                     |
| ProPEX EP Coupling, 2" PEX x 2" PEX         | Q4772020 | 2.164    | 0.25     | 2.164    | 2.7      | 4.578    | 2.2      | 1.35     | 1.1      | 107.8 | 0.24                     |
| ProPEX EP Coupling, 2 1/2" PEX x 1 1/4" PEX | Q4772513 | 2.84     | 0.257    | 1.469    | 3.6      | 4.566    | 2.8      | 1.8      | 1.4      | 29.3  | 0.34                     |
| ProPEX EP Coupling, 2 1/2" PEX x 1 1/2" PEX | Q4772515 | 2.84     | 0.25     | 1.734    | 3.6      | 4.824    | 2.8      | 1.82     | 1.4      | 35.9  | 0.35                     |
| ProPEX EP Coupling, 2 1/2" PEX x 2" PEX     | Q4772520 | 2.84     | 0.25     | 2.172    | 3.6      | 5.262    | 2.8      | 1.82     | 1.4      | 82.6  | 0.4                      |
| ProPEX EP Coupling, 2 1/2" PEX x 2 1/2" PEX | Q4772525 | 2.84     | 0.25     | 2.84     | 3.6      | 5.931    | 2.8      | 1.82     | 1.4      | 219.1 | 0.51                     |
| ProPEX EP Coupling, 3" PEX x 2" PEX         | Q4773020 | 3.391    | 0.25     | 2.177    | 4.2      | 5.819    | 3.3      | 2.12     | 1.65     | 73.4  | 0.6                      |
| ProPEX EP Coupling, 3" PEX x 2 1/2" PEX     | Q4773025 | 3.391    | 0.25     | 2.846    | 4.2      | 6.487    | 3.3      | 2.12     | 1.65     | 136.2 | 0.71                     |
| ProPEX EP Coupling, 3" PEX x 3" PEX         | Q4773030 | 3.391    | 0.25     | 3.391    | 4.2      | 7.033    | 3.3      | 2.12     | 1.65     | 320.6 | 0.85                     |
| ProPEX EP Coupling, 3/8" PEX x 3/8" PEX     | Q4773838 | 0.601    | 0.125    | 0.601    | 0.631    | 1.327    | 0.631    | 0.315    | 0.315    | -     | 0.01                     |
| ProPEX EP Coupling, 1/2" PEX x 1/2" PEX     | Q4775050 | 0.722    | 0.125    | 0.722    | 0.87     | 1.569    | 0.695    | 0.435    | 0.348    | 8.3   | 0.01                     |
| ProPEX EP Coupling, 1/2" PEX x 3/4" PEX     | Q4775075 | 0.723    | 0.117    | 0.959    | 1.22     | 1.799    | 0.98     | 0.61     | 0.49     | 5.2   | 0.03                     |
| ProPEX EP Coupling, 5/8" PEX x 5/8" PEX     | Q4776363 | 0.879    | 0.119    | 0.879    | 1.01     | 1.877    | 0.88     | 0.505    | 0.44     | -     | 0.01                     |
| ProPEX EP Coupling, 3/4" PEX x 1" PEX       | Q4777510 | 0.961    | 0.125    | 1.19     | 1.48     | 2.276    | 1.165    | 0.74     | 0.59     | 12.5  | 0.04                     |
| ProPEX EP Coupling, 3/4" PEX x 3/4" PEX     | Q4777575 | 0.955    | 0.125    | 0.955    | 1.22     | 2.035    | 0.965    | 0.61     | 0.49     | 19    | 0.02                     |

| Part name                                   | Part no. | Equivalent length through [ft] | End type 1    | End type 2    |
|---|----------|--------------------------------|---------------|---------------|
| ProPEX EP Coupling, 1" PEX x 1" PEX         | Q4771010 | 0.9                            | ProPEX 1"     | ProPEX 1"     |
| ProPEX EP Coupling, 1 1/4" PEX x 3/4" PEX   | Q4771307 | 3.6                            | ProPEX 1-1/4" | ProPEX 3/4"   |
| ProPEX EP Coupling, 1 1/4" PEX x 1" PEX     | Q4771310 | 2.6                            | ProPEX 1-1/4" | ProPEX 1"     |
| ProPEX EP Coupling, 1 1/4" PEX x 1 1/4" PEX | Q4771313 | 1.1                            | ProPEX 1-1/4" | ProPEX 1-1/4" |
| ProPEX EP Coupling, 1 1/2" PEX x 3/4" PEX   | Q4771507 | 3.5                            | ProPEX 1-1/2" | ProPEX 3/4"   |
| ProPEX EP Coupling, 1 1/2" PEX x 1" PEX     | Q4771510 | 4.3                            | ProPEX 1-1/2" | ProPEX 1"     |
| ProPEX EP Coupling, 1 1/2" PEX x 1 1/4" PEX | Q4771513 | 3.7                            | ProPEX 1-1/2" | ProPEX 1-1/4" |
| ProPEX EP Coupling, 1 1/2" PEX x 1 1/2" PEX | Q4771515 | 1.4                            | ProPEX 1-1/2" | ProPEX 1-1/2" |
| ProPEX EP Coupling, 2" PEX x 1 1/2" PEX     | Q4772015 | 4.59                           | ProPEX 2"     | ProPEX 1-1/2" |
| ProPEX EP Coupling, 2" PEX x 2" PEX         | Q4772020 | 2.7                            | ProPEX 2"     | ProPEX 2"     |
| ProPEX EP Coupling, 2 1/2" PEX x 1 1/4" PEX | Q4772513 | 5.4                            | ProPEX 2-1/2" | ProPEX 1-1/4" |
| ProPEX EP Coupling, 2 1/2" PEX x 1 1/2" PEX | Q4772515 | 7.5                            | ProPEX 2-1/2" | ProPEX 1-1/2" |
| ProPEX EP Coupling, 2 1/2" PEX x 2" PEX     | Q4772520 | 5.4                            | ProPEX 2-1/2" | ProPEX 2"     |
| ProPEX EP Coupling, 2 1/2" PEX x 2 1/2" PEX | Q4772525 | 1.7                            | ProPEX 2-1/2" | ProPEX 2-1/2" |
| ProPEX EP Coupling, 3" PEX x 2" PEX         | Q4773020 | 7.2                            | ProPEX 3"     | ProPEX 2"     |
| ProPEX EP Coupling, 3" PEX x 2 1/2" PEX     | Q4773025 | 7.1                            | ProPEX 3"     | ProPEX 2-1/2" |
| ProPEX EP Coupling, 3" PEX x 3" PEX         | Q4773030 | 1.9                            | ProPEX 3"     | ProPEX 3"     |
| ProPEX EP Coupling, 3/8" PEX x 3/8" PEX     | Q4773838 | 0.8                            | ProPEX 3/8"   | ProPEX 3/8"   |
| ProPEX EP Coupling, 1/2" PEX x 1/2" PEX     | Q4775050 | 0.8                            | ProPEX 1/2"   | ProPEX 1/2"   |
| ProPEX EP Coupling, 1/2" PEX x 3/4" PEX     | Q4775075 | 2.6                            | ProPEX 1/2"   | ProPEX 3/4"   |
| ProPEX EP Coupling, 5/8" PEX X 5/8" PEX     | Q4776363 | 2.7                            | ProPEX 5/8"   | ProPEX 5/8"   |
| ProPEX EP Coupling, 3/4" PEX x 1" PEX       | Q4777510 | 2.7                            | ProPEX 3/4"   | ProPEX 1"     |
| ProPEX EP Coupling, 3/4" PEX x 3/4" PEX     | Q4777575 | 0.9                            | ProPEX 3/4"   | ProPEX 3/4"   |

| Installation  | Related applications  |
|---|---|
| Use ProPEX rings to make the fitting. Refer to the Uponor Piping Pocket Guide, Radiant Floor Heating Installation Handbook or AquaSAFE™ Residential Fire Sprinkler Installation Guide for more information. | <ul style="list-style-type: none"> <li>PEX-a Plumbing Systems</li> <li>Hydronic Radiant Heating and Cooling Systems</li> <li>Permafrost Protection Systems</li> <li>Turf Conditioning Systems</li> <li>AquaSAFE™ Fire Safety Systems</li> </ul> |

| Codes                                      | Standards   | Listings   |
|--|---|--|
| IMC UPC IBC IRC IPC NPC of Canada UMC NSPC | ASTM F1960 ASTM E119/UL 263 ASTM E84 ASTM E814/ULC S115 ASTM F877 CSA B137.5 ULC S102.2 NSF-61 ULC S101 NSF-14* | IAPMO-ES ICC-ES-PMG cNSFus-pw UL U.P.Code cQAlus P321 HUD MR 1269* |

| Trademark Information   | Contact information   |
|---|---|
| ProPEX® is a registered trademark of Uponor Inc. ProPEX™ is a trademark of Uponor Ltd.<br>* Some SKUs in this family have additional codes, standards, or listings. Please see uponor.com for complete information. | <p>Uponor Inc.<br/>5925 148th Street West<br/>Apple Valley, MN 55124<br/>T 800.321.4739<br/>F 952.891.2008</p> <p>Uponor Ltd.<br/>6510 Kennedy Road<br/>Mississauga, ON L5T 2X4<br/>T 888.594.7726<br/>F 800.636.9517</p> |