

ProPEX brass fitting adapters

Project Information

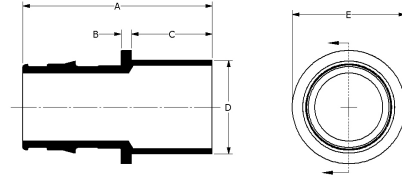
Job name :	Location :
Engineer :	Date submitted:
Contractor :	Submitted by:
Manufacturer's representative :	Approved by :

Technical data

Material	Brass
Temp/pressure ratings	73 °F (23 °C) at 160 psi (11 bar) 180 °F (82 °C) at 100 psi (6.9 bar) 200 °F (93 °C) at 80 psi (5.5 bar)
Prop 65 label required?	Yes

Product information and application use

ProPEX® Brass Fitting Adapters transition crosslinked polyethylene (PEX) tubing to copper fittings. These adapters are approved for use in hydronic radiant heating systems. One end of the adapter is manufactured with the Uponor ProPEX Fitting for connections to Wirsbo hePEX™ tubing. These adapters are safe for direct burial in soil.



Part name	Part no.	A [inch]	B [inch]	C [inch]	D [inch]	E [inch]	F [inch]	G [inch]	Cv	Weight per UOM [lbs/UOM]	Equivalent length through [ft]
ProPEX Brass Fitting Adapter, 5/8" PEX x 1/2" Copper	Q4506350	1.551	0.125	0.56	0.624	0.94	0.312	0.866	-	0.06	-
ProPEX Brass Fitting Adapter, 5/8" PEX x 3/4" Copper	Q4506375	1.801	0.125	0.81	0.874	0.94	0.437	0.866	-	0.11	-
ProPEX Brass Fitting Adapter, 1" PEX x 1" Copper	Q5501010	2.276	0.125	0.97	1.125	1.36	0.563	1.181	30.5	0.19	1.3
ProPEX Brass Fitting Adapter, 1 1/4" PEX x 1 1/4" Copper	Q5501313	2.6	0.125	1.03	1.375	1.72	0.687	1.445	34	0.33	3.8
ProPEX Brass Fitting Adapter, 1 1/2" PEX x 1 1/2" Copper	Q5501515	2.989	0.125	1.16	1.625	1.9	0.813	1.704	63.7	0.46	1.8
ProPEX Brass Fitting Adapter, 2" PEX x 2" Copper	Q5502020	3.807	0.25	1.41	2.125	2.68	1.063	2.147	150.7	1.08	0.8
ProPEX Brass Fitting Adapter, 1/2" PEX x 1/2" Copper	Q5505050	1.394	0.125	0.56	0.625	0.77	0.313	0.709	7.7	0.06	1
ProPEX Brass Fitting Adapter, 3/4" PEX x 1" Copper	Q5507510	2.04	0.11	0.985	1.125	1.15	0.563	0.945	11.4	0.14	3.1
ProPEX Brass Fitting Adapter, 3/4" PEX x 1/2" Copper	Q5507550	1.63	0.125	0.56	0.624	1.1	0.312	0.945	8.8	0.09	1.5
ProPEX Brass Fitting Adapter, 3/4" PEX x 3/4" Copper	Q5507575	1.88	0.125	0.81	0.874	1.1	0.437	0.945	15.7	0.11	1.5

Part name	Part no.	End Type 1	End Type 2
ProPEX Brass Fitting Adapter, 5/8" PEX x 1/2" Copper	Q4506350	ProPEX 5/8"	Sweat 1/2"
ProPEX Brass Fitting Adapter, 5/8" PEX x 3/4" Copper	Q4506375	ProPEX 5/8"	Sweat 3/4"
ProPEX Brass Fitting Adapter, 1" PEX x 1" Copper	Q5501010	ProPEX 1"	Sweat 1"
ProPEX Brass Fitting Adapter, 1 1/4" PEX x 1 1/4" Copper	Q5501313	ProPEX 1-1/4"	Sweat 1-1/4"
ProPEX Brass Fitting Adapter, 1 1/2" PEX x 1 1/2" Copper	Q5501515	ProPEX 1-1/2"	Sweat 1-1/2"
ProPEX Brass Fitting Adapter, 2" PEX x 2" Copper	Q5502020	ProPEX 2"	Sweat 2"
ProPEX Brass Fitting Adapter, 1/2" PEX x 1/2" Copper	Q5505050	ProPEX 1/2"	Sweat 1/2"
ProPEX Brass Fitting Adapter, 3/4" PEX x 1" Copper	Q5507510	ProPEX 3/4"	Sweat 1"
ProPEX Brass Fitting Adapter, 3/4" PEX x 1/2" Copper	Q5507550	ProPEX 3/4"	Sweat 1/2"
ProPEX Brass Fitting Adapter, 3/4" PEX x 3/4" Copper	Q5507575	ProPEX 3/4"	Sweat 3/4"

Installation	Related applications
--------------	----------------------

ProPEX Tool and ProPEX Rings (sold separately) are required for connecting the PEX tubing. Do not solder within 18 inches of the ProPEX Fitting. For more information, refer to the Uponor Radiant Floor Heating Installation Handbook.

Radiant Heating and Cooling Systems

Codes	Standards	Listings
-------	-----------	----------

IMC|IBC|IRC|NPC of Canada|UMC

ASTM F1960|CSA B137.5|NSF-14|ASTM F877

IAPMO-ES|ICC-ES-PMG|cNSFus-rfh

Footnotes	Contact information
-----------	---------------------

-

Uponor Inc.
5925 148th Street West
Apple Valley, MN 55124
T 800.321.4739
F 952.891.2008

Uponor Ltd.
6510 Kennedy Road
Mississauga, ON L5T 2X4
T 888.594.7726
F 800.636.9517