

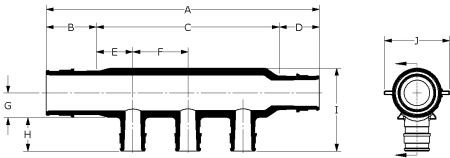
EP flow-through multi-port horizontal tees

Project information

Job name:	Location:
Engineer:	Date submitted:
Contractor:	Submitted by:
Manufacturer's representative:	Approved by:

Technical data

Material	Engineered Polymer
Loop Cv	2.9 Cv
End type 1	ProPEX 3/4"
End type 2	ProPEX 3/4"
End type 3	ProPEX 3/4"
End type 4	ProPEX 1/2"
Temp/pressure ratings	73 °F (23 °C) at 160 psi (11 bar)
	180 °F (82 °C) at 100 psi (6.9 bar)
	200 °F (93 °C) at 80 psi (5.5 bar)



Product information and application use

Engineered polymer (EP) flow-through multi-port horizontal tees are used in hot and cold domestic potable water distribution systems. The tees feature 3/4" ProPEX® inlets with 1/2" ProPEX outlets.

Note: Temperature and pressure ratings stated are hydrostatic ratings. For domestic hot-water (DHW) and DHW recirculation installations, operating conditions should not exceed 140°F (60°C) at 80 psi (5.5 bar) in accordance with ASTM F2023. For additional information regarding application-specific temperature and pressure ratings, refer to the Uponor PEX Piping Systems Design and Installation Manual.

Part name	Part no.	A [inch]	B [inch]	C [inch]	D [inch]	E [inch]	F [inch]	G [inch]	H [inch]	I [inch]	J [inch]
EP Flow-through Multi-port Horizontal Tee, 4 (1/2") outlets, 3/4" x 3/4" x 3/4" ProPEX	Q2247577	8.66	0.955	6.75	0.955	0.688	1.25	0.467	0.719	1.87	1.18

Part name	Part no.	Cv Through	Equivalent length branch [ft]	Equivalent length through [ft]	Weight per UOM [lbs/UOM]
EP Flow-through Multi-port Horizontal Tee, 4 (1/2") outlets, 3/4" x 3/4" x 3/4" ProPEX	Q2247577	13.8	-	-	-

Part name	Part no.	Codes	Standards	Listings
EP flow-through multi-port horizontal tees	Q2247577	UPC IBC IRC IPC NPC of Canada UMC NSPC IMC	ASTM E814 ULC S115 ASTM F877 ASTM F1960 CSA B137.5 ULC S102.2 ASTM E1119 UL 263 NSF-61 ULC S101 NSF-14	IAPMO-ES HUD MR 1269 ICC-ES-PMG cNSFus-pw UL U.P.Code cQAlus P321

Installation	Related applications
Use any product designed to mount 1" copper pipe as a mounting bracket. For more information, refer to the Uponor Piping Systems Installation Guide	PEX-a Plumbing Systems

Footnotes	Contact information
-	<div>Uponor Inc. 5925 148th Street West Apple Valley, MN 55124 T 800.321.4739 F 952.891.2008</div> <div>Uponor Ltd. 6510 Kennedy Road Mississauga, ON L5T 2X4 T 888.594.7726 F 800.638.9517</div>