

# ProPEX lead-free (LF) brass water meter valves

## Project information

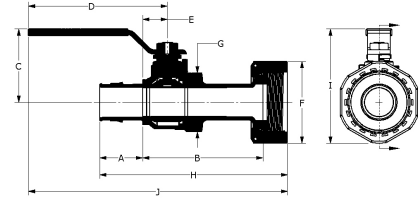
Job name :	Location :
Engineer :	Date submitted:
Contractor :	Submitted by:
Manufacturer's representative :	Approved by :

## Technical data

Material	LF Brass
Temp/pressure ratings	73 °F (23 °C) at 160 psi (11 bar) 180 °F (82 °C) at 100 psi (6.9 bar) 200 °F (93 °C) at 80 psi (5.5 bar)
Prop 65 label required?	Yes

## Product information and application use

Use Uponor ProPEX® lead-free (LF) brass water meter service valves in all commercial submetering and residential water service inlets, outlets or both. The valves allow for a direct ASTM F1960 connection to water meters sized 5/8" to 1". Valve is sized for 3/4" or 1" Uponor AquaPEX® tubing. Product handle material is stainless steel.



Part name	Part no.	A [inch]	B [inch]	C [inch]	D [inch]	E [inch]	F [inch]	G [inch]	H [inch]	I [inch]	J [inch]
ProPEX LF Brass Straight Water Meter Valve, 3/4" PEX x 1" NPSM	WS4820750	0.945	2.957	1.551	2.992	0.591	1.9	1.299	4.278	2.501	5.734
ProPEX LF Brass Elbow Water Meter Valve, 3/4" PEX x 1" NPSM	WS4820751	0.945	2.249	1.551	2.992	0.781	1.9	1.299	0.65	3.277	5.735
ProPEX LF Brass Straight Water Meter Valve, 1" PEX x 1 1/4" NPSM	WS4821000	1.181	3.302	2.015	3.819	0.677	2.25	1.614	5.158	3.139	7.119
ProPEX LF Brass Elbow Water Meter Valve, 1" PEX x 1 1/4" NPSM	WS4821001	1.181	2.625	2.015	3.819	0.827	2.25	1.614	0.807	4.022	7.119

Part name	Part no.	K [inch]	Cv	Weight per UOM [lbs/UOM]	End Type 1	End Type 2
ProPEX LF Brass Straight Water Meter Valve, 3/4" PEX x 1" NPSM	WS4820750	0.65	10.9	0.76	ProPEX 3/4"	NPSM 1"
ProPEX LF Brass Elbow Water Meter Valve, 3/4" PEX x 1" NPSM	WS4820751	0.65	4.9	0.76	ProPEX 3/4"	NPSM 1"
ProPEX LF Brass Straight Water Meter Valve, 1" PEX x 1 1/4" NPSM	WS4821000	0.807	18.7	1.22	ProPEX 1"	NPSM 1-1/4"
ProPEX LF Brass Elbow Water Meter Valve, 1" PEX x 1 1/4" NPSM	WS4821001	0.807	9.7	1.24	ProPEX 1"	NPSM 1-1/4"

## Installation

ProPEX tool and ProPEX rings (sold separately) are required for connecting the PEX tubing. For more information, refer to the Uponor Residential Plumbing Systems Installation Guide or the Uponor Piping Systems Installation Guide.

## Related applications

PEX-a Plumbing Systems

## Codes

UPC|IBC|IRC|IPC|NPC of Canada|UMC|NSPC|IMC

## Standards

NSF-372|ASTM F877|NSF-359|ASTM F1960|CSA B137.5|NSF-61|NSF-14

## Listings

HUD MR 1269|cNSFus-pw-G|U.P.Code

## Trademark information

ProPEX® is a registered trademark of Uponor Inc. ProPEX™ is a trademark of Uponor Ltd.

## Contact information

Uponor Inc.  
5925 148th Street West  
Apple Valley, MN 55124  
T 800.321.4739  
F 952.891.2008

Uponor Ltd.  
6510 Kennedy Road  
Mississauga, ON L5T 2X4  
T 888.594.7726  
F 800.636.9517