



References

## Chatterley Valley

### Uponor involvement



35585

## Chatterley Valley

The world's first BREEAM outstanding rated logistics building has been equipped with industrial floor heating from Velta UK.

### Project Facts:

Location

North Staffordshire, United Kingdom

Completion

2008

Building Type

Industrial buildings

Product systems

Radiant Heating & Cooling

Address

Chatterley Valley

Website

<https://eu.glp.com/>

Project Type

New building

## Partners

investor

[Gazeley UK Ltd.](#)

16 Palace Street, Cardinal Place,  
London, SW1E 5JQ  
United Kingdom

contractor

Mc Laren Construction  
Main Contractor  
United Kingdom

specifier

Kelly Taylor Associates  
M&E Consultant  
United Kingdom

contractor

C A Sothers, M&E Contractor  
United Kingdom

contractor

Stuarts Industrial Flooring, Concrete  
Flooring Contractor  
United Kingdom

---

### The Chatterley Valley project

A scheme to build one of the world's greenest business and logistics parks in North Staffordshire. The pioneering new project called Blue Planet Chatterley Valley was developed by Gazeley UK Ltd and hosts ultra-green sustainability credentials for the 385,000sq ft (=35,585 m<sup>2</sup>) warehousing facility. It combines a highly specified logistics warehouse with cutting edge sustainable technology in a cost efficient centralised distribution location.

The building allows for modern distribution requirements whilst satisfying the most rigorous Corporate Social Responsibility (CSR) policies focused on operational cost saving and reducing carbon emissions. They aimed at delivering total operational cost savings of up to £189,000 per annum.

### Uponor's involvement

Built by Main Contractor McLaren Construction, the Velta one industrial floor heating and cooling system was incorporated directly into the ground bearing slab in conjunction with a laser screed machine. It totalled to an area of 27,000 m<sup>2</sup> of Velta one industrial heating and cooling system. Working alongside Stuarts Industrial Flooring the pipework was integrated into the slab without causing any time delays. Daily production of up to 1,800 m<sup>2</sup> of completed floor incorporating the Velta one system were achieved.

### The benefits

The Velta one system provides many advantages:

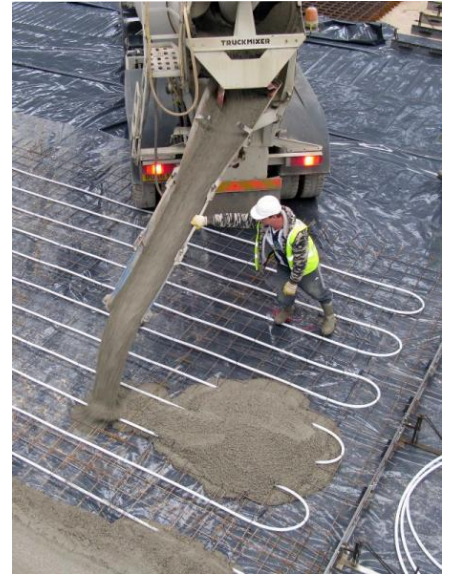
- The heat is in the occupied working zone and provides an even distribution of temperature.
- The system offers the flexibility to provide high rise racking without the obstruction of fans or ductwork.
- No requirement to clean or maintain the system, a marked contrast to visible heating systems which require a separate maintenance expense.
- The system is installed at the time of installing the concrete floor with a Laser Screed Machine, providing super flat floors with great programme savings.
- High energy efficiency

BREEAM certification

The project has been awarded an "Outstanding" classification under the 2008 Building Research Establishment Environmental Assessment Method (BREEAM) ratings for environmental performance.

## Chatterley Valley





+GF+