

Grand Poet Hotel by Samarah



Involucración Uponor



Grand Poet Hotel by Samarah, Riga

Historical building in heart of Riga. Universal Uponor MLC materials were used in the hotel water supply and radiator heating system.

It is the first artist built hotel in Riga comprising a modern art and bohemian lifestyle. The hotel building has the ancient and colourful history, preservation of which has required a special care during the renovation process.

Datos del proyecto:

Location

Riga, Latvia

Finalización

2018

Tipo de edificio

Hoteles

Product systems

Climatización Invisible

Dirección

Raina bulvaris 5/6, Riga, Latvia,
LV1050

Página web

<https://grandpoet.semarahhotels.com/?lang=en>

Tipo de proyecto

Renovation

Colaboradores

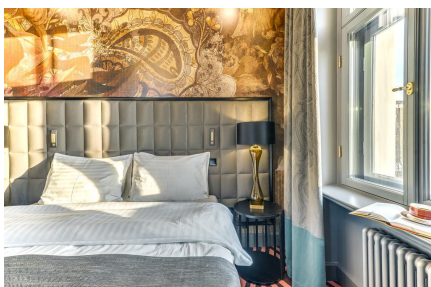
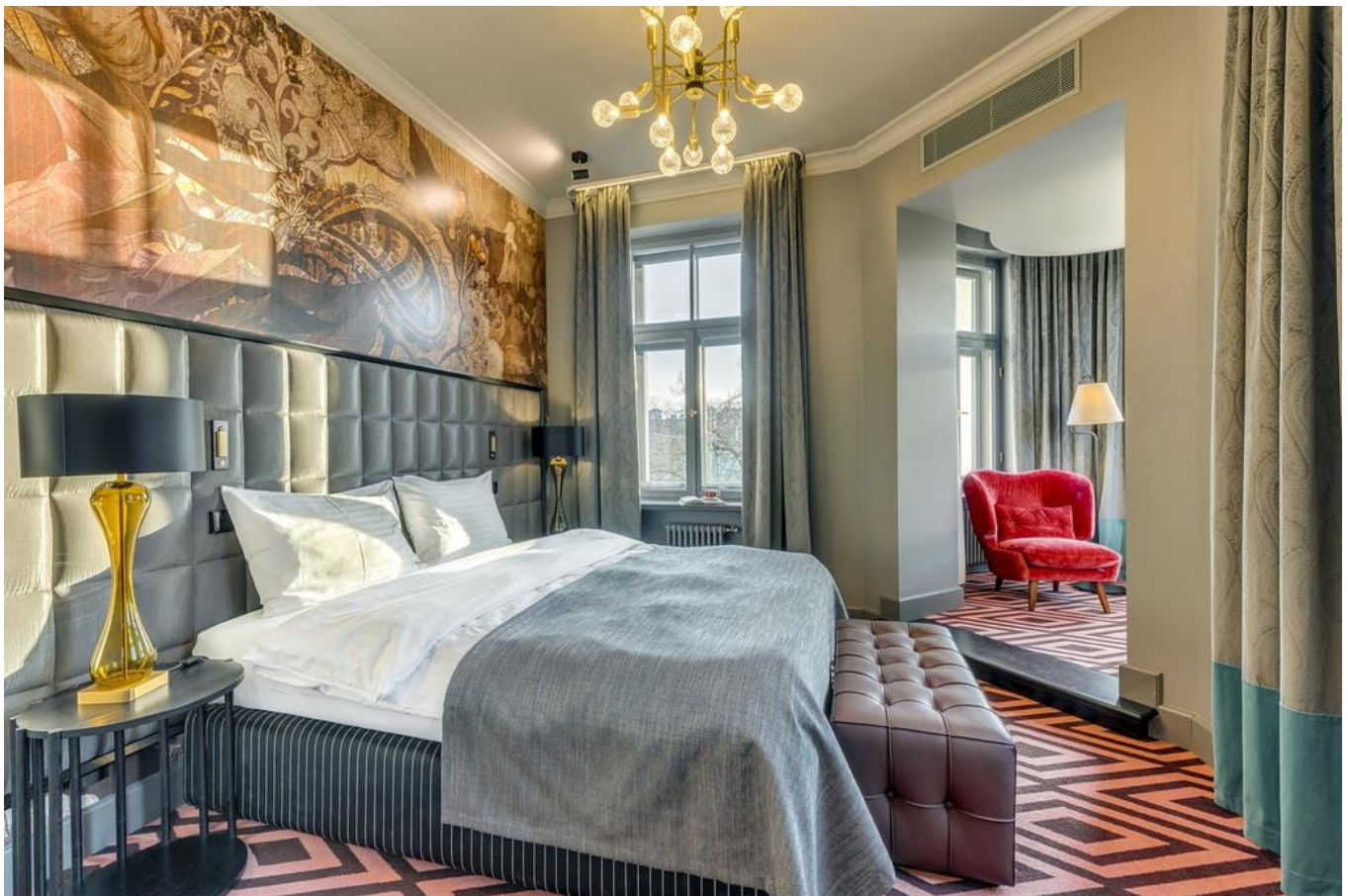
Architect: Sarma & Norde

Interior: Stylt Trampoli

Short description

A new hotel with 168 stylish rooms and extra luxurious apartments. Here everything is in one place – a restaurant for a new and sophisticated gastronomic experience, modern event and conference rooms, spacious Wellness center, as well as three elegant SPA rooms that are going to be open in early spring. The hotel is a pearl for design idolaters, free-livers and cultural experiences. Universal Uponor MLC materials were used in the hotel water supply and radiator heating systems.

Grand Poet Hotel by Samarah, Riga





Uponor Hispania, S.A.U

Avda. Leonardo da Vinci 15-17-19
Parque Empresarial La Carpetania
28906 Getafe (Madrid)
Spain

Teléfono +34 91 685 36 00

Email

servicioalcliente.es.bfs@georgfischer.com

W www.uponor.com