

Soportes de curvatura caídos de plástico

Project information

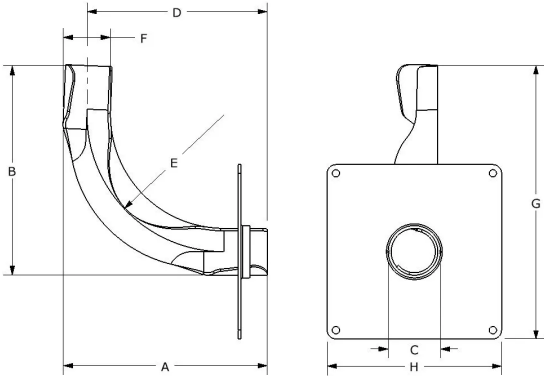
| | |
|--------------------------------|-----------------|
| Job name: | Location: |
| Engineer: | Fecha de envío: |
| Contractor: | Presentada por: |
| Manufacturer's representative: | Approved by: |

Technical data

| | |
|-----------------------|----------------------------|
| Material | Plastic |
| Subcomponent Material | Glass Reinforced Nylon 30% |

Product information and application use

Uponor Plastic Drop Ear Bend Supports are designed to provide a Rigid, 90-degree bend and connection-free stub out from a stud wall or floor for 3⁄8" or 1⁄2" Uponor AquaPEX® tubing.



| Part name | Part no. | A [Inch] | B [Inch] | C [Inch] | D [Inch] | E [Inch] | F [Inch] | G [Inch] | H [Inch] | Weight per UOM [lbs/UOM] |
|------------------------------------|----------|----------|----------|----------|----------|----------|----------|----------|----------|--------------------------|
| 3/8" Plastic Drop Ear Bend Support | F5200375 | 3.798 | 3.879 | 0.88 | 3.364 | 2.475 | 0.87 | 4.944 | 3 | 0.06 |
| 1/2" Plastic Drop Ear Bend Support | F5200500 | 3.815 | 3.895 | 0.885 | 3.315 | 2.475 | 0.435 | 4.895 | 3 | 0.06 |

Installation

Snap the tubing into the bend support at the beginning of the bend. Continue the bend through the support and snap the tubing into the support at the end of the bend as well. Refer to the Uponor Professional Plumbing Installation Handbook or Uponor Radiant Floor Installation Handbook for additional information.

Related applications

PEX-a Plumbing Systems
Radiant Floor Heating and Cooling Systems
AquaSAFE™ Fire Safety Systems

Footnotes

| |
|---|
| - |
|---|

Contact information

| | |
|-----------------------------------------------------------------------------------------------------|-------------------------------------------------------------------------------------------------|
| Uponor Inc. 5925 148th Street West Apple Valley, MN 55124 T 800.321.4739 F 952.891.2008 | Uponor Ltd. 6510 Kennedy Road Mississauga, ON L5T 2X4 T 888.594.7726 F 800.638.9517 |
|-----------------------------------------------------------------------------------------------------|-------------------------------------------------------------------------------------------------|