

# Colectores con válvula sin plomo (LF) de cobre (tipo L) ProPEX

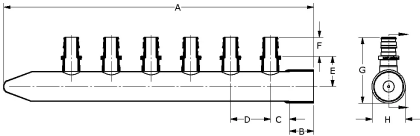


## Project information

Job name:	Location:
Engineer:	Fecha de envío:
Contractor:	Presentada por:
Manufacturer's representative:	Approved by:

## Technical data

Material	Copper
Manifold size	1 inch
End type 1	ProPEX 1/2"
Temp/pressure ratings	73 °F (23 °C) at 160 psi (11 bar) 180 °F (82 °C) at 100 psi (6.9 bar) 200 °F (93 °C) at 80 psi (5.5 bar) 210 °F (99 °C) at 149 psi (10.3 bar)
Max. fluid flow rate	21 gpm
Prop 65 label required?	Yes



## Product information and application use

Uponor's 1" Copper Manifold with Lead-free Brass 1/2" ProPEX® Ball Valve provides simple and easy isolation of individual loops. Sections can sweat together to extend the number of outlets using a standard 1" copper coupling. Both 1" ends are copper pipe size and require a copper end cap, coupling or transition fitting to make the proper system connection. Do not exceed accepted flow rates for 1" nominal copper.

*This product is made to order, please contact [customer service](#) for lead time.*

Note: Temperature and pressure ratings stated are hydrostatic ratings. For domestic hot-water (DHW) and DHW recirculation installations, operating conditions should not exceed 140°F (60°C) at 80 psi (5.5 bar) in accordance with ASTM F2023. For additional information regarding application-specific temperature and pressure ratings, refer to the Uponor PEX Piping Systems Design and Installation Manual.

Part name	Part no.	Codes	Standards	Listings
Colectores con válvula sin plomo (LF) de cobre (tipo L) ProPEX	All	UPC IBC IRC IPC NPC of Canada UMC NSPC IMC	ASTM F877 ASTM F1960 CSA B137.5	IAPMO-ES ICC-ES-PMG cNSFus-pw-G U.P.Code

Installation	Related applications
The installer can use any product designed to mount 1" copper pipe as a mounting bracket. Any bend within 6 inches of the ProPEX connection to the manifold requires the use of a Tube Talon (F7050750) or Bend Support (A5110500 and A5150500). Refer to the AquaPEX® Professional Plumbing Installation Guide for additional information.	PEX-a Plumbing Systems

Notes
Flow at 4 fps: 10.2 gpm Flow at 5 fps: 12.8 gpm Flow at 8 fps: 20.5 gpm

Footnotes	Contact information
-	Uponor Inc. 5925 148th Street West Apple Valley, MN 55124 T 800.321.4739 F 952.891.2008  Uponor Ltd. 6510 Kennedy Road Mississauga, ON L5T 2X4 T 888.594.7726 F 800.638.9517