

# Adaptadores con rosca hembra de bronce sin plomo (LF) ProPEX



## Project information

Job name:	Location:
Engineer:	Fecha de envío:
Contractor:	Presentada por:
Manufacturer's representative:	Approved by:

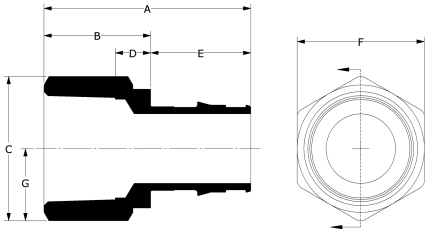
## Technical data

Material	LF Brass
Temp/pressure ratings	73 °F (23 °C) at 160 psi (11 bar) 180 °F (82 °C) at 100 psi (6.9 bar) 200 °F (93 °C) at 80 psi (5.5 bar)
Prop 65 label required?	Yes

## Product information and application use

The ProPEX® Lead-free Brass Female Threaded Adapter connects Uponor PEX-a tubing to female NPT threads. Use these fittings in hot and cold domestic potable water systems, residential fire sprinkler systems or hydronic radiant heating and cooling systems. One end of the adapter is manufactured with the Uponor ProPEX fitting for connections to Wirsbo hePEX™ tubing or Uponor AquaPEX® tubing. The other end of the adapter connects to copper. These adapters are safe for direct burial in soil.

Note: Temperature and pressure ratings stated are hydrostatic ratings. For domestic hot-water (DHW) and DHW recirculation installations, operating conditions should not exceed 140°F (60°C) at 80 psi (5.5 bar) in accordance with ASTM F2023. For additional information regarding application-specific temperature and pressure ratings, refer to the Uponor PEX Piping Systems Design and Installation Manual.



Part name	Part no.	End Type 1	End Type 2
ProPEX LF Brass Female Threaded Adapter, 1/2" PEX x 3/4" NPT	LF4575075	ProPEX 1/2"	FNPT 3/4"
ProPEX LF Brass Female Threaded Adapter, 3/4" PEX x 3/4" NPT	LF4577575	ProPEX 3/4"	FNPT 3/4"
ProPEX LF Brass Female Threaded Adapter, 1" PEX x 1" NPT	LF4571010	ProPEX 1"	FNPT 1"
ProPEX LF Brass Female Threaded Adapter, 1 1/4" PEX x 1 1/4" NPT	LF4571313	ProPEX 1-1/4"	FNPT 1-1/4"
ProPEX LF Brass Female Threaded Adapter, 1/2" PEX x 1/2" NPT	LF4575050	ProPEX 1/2"	FNPT 1/2"
ProPEX LF Brass Female Threaded Adapter, 3/4" PEX x 1" NPT	LF4577510	ProPEX 3/4"	FNPT 1"
ProPEX LF Brass Female Threaded Adapter, 1 1/2" PEX x 1 1/2" NPT	LF4571515	ProPEX 1-1/2"	FNPT 1-1/2"
ProPEX LF Brass Female Threaded Adapter, 2" PEX x 2" NPT	LF4572020	ProPEX 2"	FNPT 2"

Part name	Part no.	Codes	Standards	Listings
Adaptadores con rosca hembra de bronce sin plomo (LF) ProPEX	All	UPC IBC IRC IPC NPC of Canada UMC NSPC IMC	ASTM F877 ASTM F1960 CSA B137.5	IAPMO-ES ICC-ES-PMG U.P.Code
In addition, the following parts have additional codes, standards, or listings:				
ProPEX LF Brass Female Threaded Adapter, 1/2" PEX x 3/4" NPT	LF4575075		NSF/ANSI/CAN 372 NSF/ANSI/CAN 61 NSF/ANSI 14	cNSFus-pw-G
ProPEX LF Brass Female Threaded Adapter, 3/4" PEX x 3/4" NPT	LF4577575		NSF-372 UL 1821 NSF-61 NSF-14	cNSFus-pw-fs-G
ProPEX LF Brass Female Threaded Adapter, 1" PEX x 1" NPT	LF4571010		NSF-372 UL 1821 NSF-61 NSF-14	cNSFus-pw-fs-G
ProPEX LF Brass Female Threaded Adapter, 1 1/4" PEX x 1 1/4" NPT	LF4571313		NSF-372 UL 1821 NSF-61 NSF-14	cNSFus-pw-fs-G
ProPEX LF Brass Female Threaded Adapter, 1/2" PEX x 1/2" NPT	LF4575050		NSF-372 NSF-61 NSF-14	cNSFus-pw-G
ProPEX LF Brass Female Threaded Adapter, 3/4" PEX x 1" NPT	LF4577510		NSF-372 NSF-61 NSF-14	cNSFus-pw-G
ProPEX LF Brass Female Threaded Adapter, 1 1/2" PEX x 1 1/2" NPT	LF4571515		NSF/ANSI/CAN 372 NSF/ANSI/CAN 61 NSF/ANSI 14	cNSFus-pw-G
ProPEX LF Brass Female Threaded Adapter, 2" PEX x 2" NPT	LF4572020		NSF/ANSI/CAN 372 NSF/ANSI/CAN 61 NSF/ANSI 14	cNSFus-pw-G

Installation	Related applications	
Use the appropriate ProPEX Ring for PEX-a tubing. Refer to the Uponor AquaPEX® Professional Plumbing Installation Guide, AquaSAFE™ Residential Fire Sprinkler Installation Guide or Uponor Radiant Installation Handbook for additional information.	PEX-a Plumbing Systems	
	Radiant Heating and Cooling Systems	
	Permafrost Protection Systems	
	Turf Conditioning Systems	
	AquaSAFE™ Fire Safety Systems	
Footnotes	Contact information	
-	Uponor Inc. 5925 148th Street West Apple Valley, MN 55124 T 800.321.4739 F 952.891.2008	Uponor Ltd. 6510 Kennedy Road Mississauga, ON L5T 2X4 T 888.594.7726 F 800.638.9517