

# Válvulas de bola comerciales de bronce sin plomo (LF) ProPEX



## Project Information

Job name:	Location:
Engineer:	Fecha de envío:
Contractor:	Presentada por:
Manufacturer's representative:	Approved by:

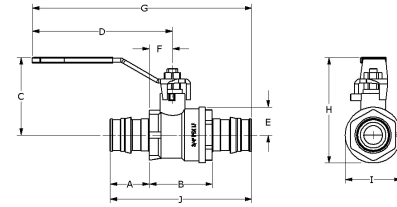
## Technical data

Cold working pressure	250 psi
Temp/pressure ratings	200 °F (93 °C) at 200 psi (13.8 bar)
Prop 65 label required?	Yes

## Product information and application use

To help meet the stringent demands of commercial plumbing and hydronic distribution projects, Uponor is offering new ProPEX® ASTM F1960 lead-free (LF) brass ball valves in sizes from ½" to 2". The full-port ball valves feature a stainless-steel ball and stem for greater durability, longevity, and system performance.

Note: Temperature and pressure ratings stated are hydrostatic ratings. For domestic hot-water (DHW) and DHW recirculation installations, operating conditions should not exceed 140°F (60°C) at 80 psi (5.5 bar) in accordance with ASTM F2023. For additional information regarding application-specific temperature and pressure ratings, refer to the Uponor PEX Piping Systems Design and Installation Manual.



Part name	Part no.	A [inch]	B [inch]	C [inch]	D [inch]	E [inch]	F [inch]	G [inch]	H [inch]	I [inch]	J [inch]
ProPEX LF Brass Commercial Ball Valve (full port) SS Ball and Stem 1/2" PEX x 1/2" PEX	LFC4825050SS	0.709	1.228	1.679	3.37	0.447	0.465	4.843	2.126	0.959	2.646
ProPEX LF Brass Commercial Ball Valve (full port) SS Ball and Stem 3/4" PEX x 3/4" PEX	LFC4827575SS	0.945	1.358	1.789	3.37	0.634	0.522	5.151	2.423	1.268	3.248
ProPEX LF Brass Commercial Ball Valve (full port) SS Ball and Stem 1" PEX x 1" PEX	LFC4821010SS	1.181	1.618	2.181	4.52	0.748	0.685	6.504	2.181	1.496	3.98
ProPEX LF Brass Commercial Ball Valve (full port) SS Ball and Stem 1 1/4" PEX x 1 1/4" PEX	LFC4821313SS	1.445	1.862	2.388	4.516	0.915	0.821	7.002	3.303	1.831	4.752
ProPEX LF Brass Commercial Ball Valve (full port) SS Ball and Stem 1 1/2" PEX x 1 1/2" PEX	LFC4821515SS	1.705	2.059	3.114	5.584	1.024	0.98	8.368	4.138	2.087	5.469
ProPEX LF Brass Commercial Ball Valve (full port) SS Ball and Stem 2" PEX x 2" PEX	LFC4822020SS	2.146	2.413	3.339	5.584	1.358	1.122	9.021	4.697	2.638	6.705

Part name	Part no.	Cv	End Type 1	End Type 2	Weight per UOM [lbs/UOM]
ProPEX LF Brass Commercial Ball Valve (full port) SS Ball and Stem 1/2" PEX x 1/2" PEX	LFC4825050SS	6.8	ProPEX 1/2"	ProPEX 1/2"	0.33
ProPEX LF Brass Commercial Ball Valve (full port) SS Ball and Stem 3/4" PEX x 3/4" PEX	LFC4827575SS	17	ProPEX 3/4"	ProPEX 3/4"	0.45
ProPEX LF Brass Commercial Ball Valve (full port) SS Ball and Stem 1" PEX x 1" PEX	LFC4821010SS	29	ProPEX 1"	ProPEX 1"	0.87
ProPEX LF Brass Commercial Ball Valve (full port) SS Ball and Stem 1 1/4" PEX x 1 1/4" PEX	LFC4821313SS	49.1	ProPEX 1-1/4"	ProPEX 1-1/4"	1.29
ProPEX LF Brass Commercial Ball Valve (full port) SS Ball and Stem 1 1/2" PEX x 1 1/2" PEX	LFC4821515SS	58.9	ProPEX 1-1/2"	ProPEX 1-1/2"	1.9
ProPEX LF Brass Commercial Ball Valve (full port) SS Ball and Stem 2" PEX x 2" PEX	LFC4822020SS	139.1	ProPEX 2"	ProPEX 2"	2.97

Part name	Part no.	Codes	Standards	Listings
Válvulas de bola comerciales de bronce sin plomo (LF) ProPEX	All	UPC IBC IRC IPC NPC of Canada UMC IMC	ASTM F877 NSF/ANSI/CAN 372 NSF/ANSI 359 ASTM F1960 CSA B137.5 NSF/ANSI/CAN 61 NSF/ANSI 14	cNSFus-pw-G U.P.Code

In addition, the following parts have additional codes, standards, or listings:

ProPEX LF Brass Commercial Ball Valve (full port) SS Ball and Stem 1/2" PEX x 1/2" PEX	LFC4825050SS			
ProPEX LF Brass Commercial Ball Valve (full port) SS Ball and Stem 3/4" PEX x 3/4" PEX	LFC4827575SS			
ProPEX LF Brass Commercial Ball Valve (full port) SS Ball and Stem 1 1/4" PEX x 1 1/4" PEX	LFC4821313SS			

Installation	Related applications
Install valve and stem extension kit according to local building code. Do not dismantle. Refer to the Uponor Piping Pocket Guide or the Uponor PEX Piping Systems Design and Installation Manual for additional information.	Hot water distribution
	Hydronic heating and cooling systems
	Hydronic Piping Systems
	Hydronic Radiant Heating and Cooling Systems
	PEX-a Plumbing Systems
	Plumbing Systems
	Pre-Insulated Pipe Systems
	Radiant Heating and Cooling Systems

Footnotes	Contact information		
-	<table border="0"> <tr> <td>Uponor Inc. 5925 148th Street West Apple Valley, MN 55124 T 800.321.4739 F 952.891.2008</td> <td>Uponor Ltd. 6510 Kennedy Road Mississauga, ON L5T 2X4 T 888.594.7726 F 800.638.9517</td> </tr> </table>	Uponor Inc. 5925 148th Street West Apple Valley, MN 55124 T 800.321.4739 F 952.891.2008	Uponor Ltd. 6510 Kennedy Road Mississauga, ON L5T 2X4 T 888.594.7726 F 800.638.9517
Uponor Inc. 5925 148th Street West Apple Valley, MN 55124 T 800.321.4739 F 952.891.2008	Uponor Ltd. 6510 Kennedy Road Mississauga, ON L5T 2X4 T 888.594.7726 F 800.638.9517		