

Adaptadores de accesorios con ranuras de bronce sin plomo (LF) ProPEX



Project Information

Job name:	Location:
Engineer:	Fecha de envío:
Contractor:	Presentada por:
Manufacturer's representative:	Approved by:

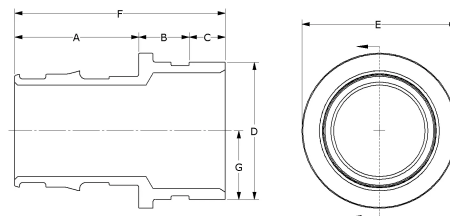
Technical data

Material	LF Brass
Temp/pressure ratings	73 °F (23 °C) at 160 psi (11 bar) 180 °F (82 °C) at 100 psi (6.9 bar) 200 °F (93 °C) at 80 psi (5.5 bar)
Prop 65 label required?	Yes

Product information and application use

ProPEX® lead-free (LF) brass copper tube size (CTS) roll-groove fitting adapters provide a direct connection to roll-groove connections designed to meet CSA B242-05. These fittings are CTS size on the roll-groove connection side.

Note: Temperature and pressure ratings stated are hydrostatic ratings. For domestic hot-water (DHW) and DHW recirculation installations, operating conditions should not exceed 140°F (60°C) at 80 psi (5.5 bar) in accordance with ASTM F2023. For additional information regarding application-specific temperature and pressure ratings, refer to the Uponor PEX Piping Systems Design and Installation Manual.



Part name	Part no.	Codes	Standards	Listings
Adaptadores de accesorios con ranuras de bronce sin plomo (LF) ProPEX	All	UPC IBC IRC IPC NPC of Canada UMC NSPC IMC	NSF-372 ASTM F877 ASTM F1960 CSA B137.5 NSF-61 NSF-14	IAPMO-ES ICC-ES-PMG cNSFus-pw-G U.P.Code

Installation

ProPEX tool and ProPEX rings (sold separately) are required for connecting the PEX tubing. For more information, refer to the Uponor AquaPEX® professional plumbing installation guide. For making roll-groove connections, follow the roll-groove fitting manufacturer's installation instructions

Related applications

- PEX-a Plumbing Systems
- Hydronic Radiant Heating and Cooling Systems
- Permafrost Protection Systems
- Turf Conditioning Systems

Notes

- Cv = 141.4 when connecting Pex to Pex
- Cv Outlet 2 = 86.1 when transitioning from Metal to Pex
- Cv = 128.3 when connecting Pex to Pex
- Cv Outlet 2 = 73.2 when transitioning from Metal to Pex
- Cv = 222.7 when connecting Pex to Pex
- Cv Outlet 2 = 138.7 when transitioning Metal to Pex
- Cv = 338.3 when connecting Pex to Pex
- Cv Outlet 2 = 192.3 when transitioning Metal to Pex
- Cv = 114.5 when connecting Pex to Pex
- Cv Outlet 2 = 79.7 when transitioning Metal to Pex
- Cv = 124.0 when connecting Pex to Pex
- Cv Outlet 2 = 71.6 when transitioning Metal to Pex
- Cv = 202 when connecting Pex to Pex
- Cv Outlet 2 = 130.2 when transitioning Metal to Pex
- Cv = 199.8 when connecting Pex to Pex
- Cv Outlet 2 = 114.9 when transitioning Metal to Pex
- Cv = 282.4 when connecting Pex to Pex
- Cv Outlet 2 = 177.4 when transitioning from Metal to Pex

Footnotes

-

Contact information

Uponor Inc.
5925 148th Street West
Apple Valley, MN 55124
T 800.321.4739
F 952.891.2008

Uponor Ltd.
6510 Kennedy Road
Mississauga, ON L5T 2X4
T 888.594.7726
F 800.638.9517