

Conectores multipuerto en T en ramal de EP para aplicaciones comerciales



Project Information

| | |
|--------------------------------|-----------------|
| Job name: | Location: |
| Engineer: | Fecha de envío: |
| Contractor: | Presentada por: |
| Manufacturer's representative: | Approved by: |

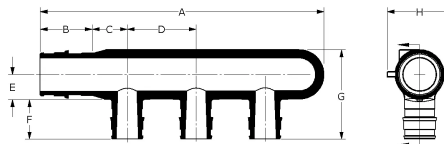
Technical data

| | |
|-----------------------|--|
| Material | Engineered Polymer |
| Temp/pressure ratings | 73 °F (23 °C) at 160 psi (11 bar) 180 °F (82 °C) at 100 psi (6.9 bar) 200 °F (93 °C) at 80 psi (5.5 bar) |

Product Information and application use

Commercial engineered polymer (EP) branch multi-port tees feature an integrated 3/4" or 1" ProPEX® inlet with 1/2" ProPEX branch outlets, or a 1 1/4" ProPEX® inlet with 3/4" ProPEX branch outlets. Designed for commercial plumbing applications, they eliminate the need for multiple connections. The 3/4" and 1" multiport tees come with mounting clips featuring Phillips self-tapping screws

Note: Temperature and pressure ratings stated are hydrostatic ratings. For domestic hot-water (DHW) and DHW recirculation installations, operating conditions should not exceed 140°F (60°C) at 80 psi (5.5 bar) in accordance with ASTM F2023. For additional information regarding application-specific temperature and pressure ratings, refer to the Uponor PEX Piping Systems Design and Installation Manual.



| Part name | Part no. | Codes | Standards | Listings |
|--|----------|--|---|---|
| Conectores multipuerto en T en ramal de EP para aplicaciones comerciales | All | UPC IBC IRC IPC NPC of Canada UMC NSPC IMC | ASTM E814 ULC S115 ASTM F877 ASTM F1960 CSA B137.5 JULC S102.2 ASTM E119 UL 263 NSF-61 JULC S101 NSF-14 | IAPMO-ES HUD MR 1269 ICC-ES-PMG cNSFus-pw UL U.P.Code cQAlus P321 |

Installation

The 3/4" and 1" multi-port tees feature mounting clips with self-tapping screws, which are appropriate for wood or metal studs. Simply attach the clips to the multi-port tee and fasten the clips to the mounting surface. For the 1 1/4" multi-port tee, mount the tee by securing all adjoining PEX pipes to the framing or support structure within 6" of each ProPEX connection. For more information, refer to the Uponor Piping Pocket Guide.

Related applications

PEX-a Plumbing Systems

Notes

Maximum multi-port tee flow for 3/4" inlet: 8.8 gpm at 8 fps, 13.2 gpm at 12 fps
Maximum multi-port tee flow for 1" inlet: 14.5 gpm at 8 fps, 21.8 gpm at 12 fps
Maximum multi-port tee flow for 1-1/4"

Maximum multi-port tee flow for 3/4" inlet: 8.8 gpm at 8 fps, 13.2 gpm at 12 fps
Maximum multi-port tee flow for 1" inlet: 14.5 gpm at 8 fps, 21.8 gpm at 12 fps
Maximum multi-port tee flow for 1 1/4" inl

Footnotes

Contact information

Uponor Inc.
5925 148th Street West
Apple Valley, MN 55124
T 800.321.4739
F 952.891.2008

Uponor Ltd.
6510 Kennedy Road
Mississauga, ON L5T 2X4
T 888.594.7726
F 800.638.9517