

# Conectores multipuerto en T de flujo de EP

## Project information

Job name:	Location:
Engineer:	Fecha de envío:
Contractor:	Presentada por:
Manufacturer's representative:	Approved by:

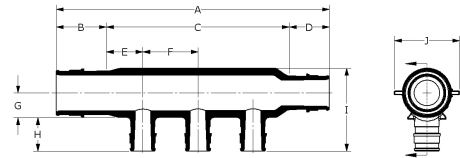
## Technical data

Material	Engineered Polymer
End type 3	ProPEX 1/2"
Temp/pressure ratings	73 °F (23 °C) at 160 psi (11 bar) 180 °F (82 °C) at 100 psi (6.9 bar) 200 °F (93 °C) at 80 psi (5.5 bar)

## Product information and application use

Engineered polymer (EP) flow-through multi-port tees feature 3/4" or 1" ProPEX® inlets with 1/2" ProPEX branch outlets. The tees are made of EP, a high-performance material used in demanding, hot-water applications

Note: Temperature and pressure ratings stated are hydrostatic ratings. For domestic hot-water (DHW) and DHW recirculation installations, operating conditions should not exceed 140°F (60°C) at 80 psi (5.5 bar) in accordance with ASTM F2023. For additional information regarding application-specific temperature and pressure ratings, refer to the Uponor PEX Piping Systems Design and Installation Manual.



Part name	Part no.	Cv Through	End Type 1	End Type 2	End Type 4
EP Flow-through Multi-port Tee, 2 (1/2") outlets, 3/4" x 3/4" ProPEX	Q2227557	15.3	ProPEX 3/4"	ProPEX 3/4"	-
EP Flow-through Multi-port Tee, 3 (1/2") outlets, 3/4" x 3/4" ProPEX	Q2237557	14.2	ProPEX 3/4"	ProPEX 3/4"	ProPEX
EP Flow-through Multi-port Tee, 3 (1/2") outlets, 1" x 3/4" ProPEX	Q2231057	11.6	ProPEX 1"	ProPEX 3/4"	-
EP Flow-through Multi-port Tee, 4 (1/2") outlets, 3/4" x 3/4" ProPEX	Q2247557	13.8	ProPEX 3/4"	ProPEX 3/4"	ProPEX
EP Flow-through Multi-port Tee, 4 (1/2") outlets, 1" x 3/4" ProPEX	Q2241057	11.7	ProPEX 1"	ProPEX 3/4"	-
EP Flow-through Multi-port Tee, 6 (1/2") outlets, 3/4" x 3/4" ProPEX	Q2267557	13.2	ProPEX 3/4"	ProPEX 3/4"	-
EP Flow-through Multi-port Tee, 6 (1/2") outlets, 1" x 3/4" ProPEX	Q2261057	11.8	ProPEX 1"	ProPEX 3/4"	-
EP Flow-through Multi-port Tee, 6 (1/2") outlets, 1" x 1" ProPEX	Q2261051	25.1	ProPEX 1"	ProPEX 1"	-
EP Flow-through Multi-port Tee, 4 (1/2") outlets, 1" x 1" ProPEX	Q2241051	29.3	ProPEX 1"	ProPEX 1"	-

Part name	Part no.	Codes	Standards	Listings
Conectores multipuerto en T de flujo de EP	All	UPC IBC IRC IPC NPC of Canada UMC NSPC IMC	ASTM E814 ULC S115 ASTM F877 ASTM F1960 CSA B137.5 ULC S102.2 ASTM E119 UL 263 NSF/ANSI/CAN 61 ULC S101 NSF/ANSI 14	IAPMO-ES HUD MR 1269 ICC-ES-PMG cNSFus-pw UL U.P.Code cQAlus P321

## Installation

For a mounting bracket, use any product designed to mount 1" copper pipe for the 3/4" EP flow-through multi-port tees or 1 1/4" copper pipe for the 1" EP flow-through multi-port tees. For more information, refer to the Uponor Piping Systems Installation Guide.

## Related applications

PEX-a Plumbing Systems

## Footnotes

## Contact information

Uponor Inc.  
5925 148th Street West  
Apple Valley, MN 55124  
T 800.321.4739  
F 952.891.2008

Uponor Ltd.  
6510 Kennedy Road  
Mississauga, ON L5T 2X4  
T 888.594.7726  
F 800.638.9517