

Conectores multipuerto en T de flujo de EP

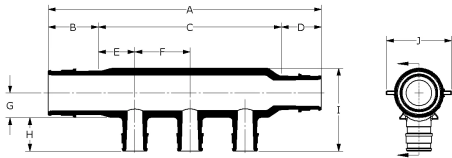
Project information	
Job name:	Location:
Engineer:	Fecha de envío:
Contractor:	Presentada por:
Manufacturer's representative:	Approved by:

Technical data	
Material	Engineered Polymer
End type 3	ProPEX 1/2"
Temp/pressure ratings	73 °F (23 °C) at 160 psi (11 bar)
	180 °F (82 °C) at 100 psi (6.9 bar)
	200 °F (93 °C) at 80 psi (5.5 bar)

Product information and application use

Engineered polymer (EP) flow-through multi-port tees feature 3/4" or 1" ProPEX® inlets with 1/2" ProPEX branch outlets. The tees are made of EP, a high-performance material used in demanding, hot-water applications

Note: Temperature and pressure ratings stated are hydrostatic ratings. For domestic hot-water (DHW) and DHW recirculation installations, operating conditions should not exceed 140°F (60°C) at 80 psi (5.5 bar) in accordance with ASTM F2023. For additional information regarding application-specific temperature and pressure ratings, refer to the Uponor PEX Piping Systems Design and Installation Manual.



Part name	Part no.	A [inch]	B [inch]	C [inch]	D [inch]	E [inch]	F [inch]	G [inch]	H [inch]	I [inch]	J [inch]
EP Flow-through Multi-port Tee, 2 (1/2") outlets, 3/4" x 3/4" ProPEX	Q2227557	4.41	0.955	2.5	0.955	0.625	1.25	0.54	0.719	1.696	1.22
EP Flow-through Multi-port Tee, 3 (1/2") outlets, 3/4" x 3/4" ProPEX	Q2237557	5.79	0.955	3.88	0.955	0.69	1.25	0.54	0.719	1.696	1.22
EP Flow-through Multi-port Tee, 3 (1/2") outlets, 1" x 3/4" ProPEX	Q2231057	6.196	1.191	4.05	0.955	0.775	1.25	0.6	0.719	1.879	1.48
EP Flow-through Multi-port Tee, 4 (1/2") outlets, 3/4" x 3/4" ProPEX	Q2247557	7.795	0.955	5.885	0.955	0.693	1.5	0.448	0.719	1.766	1.199
EP Flow-through Multi-port Tee, 4 (1/2") outlets, 1" x 3/4" ProPEX	Q2241057	7.146	1.191	5	0.955	0.625	1.25	0.57	0.719	2.009	1.441
EP Flow-through Multi-port Tee, 6 (1/2") outlets, 3/4" x 3/4" ProPEX	Q2267557	9.41	0.955	7.5	0.955	0.625	1.25	0.457	0.719	1.624	1.18
EP Flow-through Multi-port Tee, 6 (1/2") outlets, 1" x 3/4" ProPEX	Q2261057	9.646	1.191	7.5	0.955	0.625	1.25	0.57	0.719	2.009	1.441
EP Flow-through Multi-port Tee, 6 (1/2") outlets, 1" x 1" ProPEX	Q2261051	9.882	1.191	7.5	1.191	0.625	1.25	0.57	0.719	2.009	1.441
EP Flow-through Multi-port Tee, 4 (1/2") outlets, 1" x 1" ProPEX	Q2241051	7.682	1.191	5.3	1.191	0.775	1.25	0.6	0.719	1.879	1.48

Part name	Part no.	Cv Through	Equivalent length through [ft]	End Type 1	End Type 2	End Type 4	Weight per UOM [lbs/UOM]
EP Flow-through Multi-port Tee, 2 (1/2") outlets, 3/4" x 3/4" ProPEX	Q2227557	15.3	-	ProPEX 3/4"	ProPEX 3/4"	-	-
EP Flow-through Multi-port Tee, 3 (1/2") outlets, 3/4" x 3/4" ProPEX	Q2237557	14.2	-	ProPEX 3/4"	ProPEX 3/4"	ProPEX	-
EP Flow-through Multi-port Tee, 3 (1/2") outlets, 1" x 3/4" ProPEX	Q2231057	11.6	3.15	ProPEX 1"	ProPEX 3/4"	-	0.22
EP Flow-through Multi-port Tee, 4 (1/2") outlets, 3/4" x 3/4" ProPEX	Q2247557	13.8	0	ProPEX 3/4"	ProPEX 3/4"	ProPEX	0
EP Flow-through Multi-port Tee, 4 (1/2") outlets, 1" x 3/4" ProPEX	Q2241057	11.7	-	ProPEX 1"	ProPEX 3/4"	-	-
EP Flow-through Multi-port Tee, 6 (1/2") outlets, 3/4" x 3/4" ProPEX	Q2267557	13.2	0	ProPEX 3/4"	ProPEX 3/4"	-	0
EP Flow-through Multi-port Tee, 6 (1/2") outlets, 1" x 3/4" ProPEX	Q2261057	11.8	-	ProPEX 1"	ProPEX 3/4"	-	-
EP Flow-through Multi-port Tee, 6 (1/2") outlets, 1" x 1" ProPEX	Q2261051	25.1	0	ProPEX 1"	ProPEX 1"	-	0
EP Flow-through Multi-port Tee, 4 (1/2") outlets, 1" x 1" ProPEX	Q2241051	29.3	1.53	ProPEX 1"	ProPEX 1"	-	0.18

Part name	Part no.	Codes	Standards	Listings
Conectores multipuerto en T de flujo de EP	All	UPC IBC IRC IPC NPC of Canada UMC NSPC IMC	ASTM E814 ULC S115 ASTM F877 ASTM F1960 CSA B137.5 ULC S102.2 ASTM E119 UL 263 NSF-61 ULC S101 NSF-14	IAPMO-ES HUD MR 1269 ICC-ES-PMG cNSFus-pw UL U.P.Code cQAlus P321
Installation		Related applications		
For a mounting bracket, use any product designed to mount 1" copper pipe for the ¾" EP flow-through multi-port tees or 1¼" copper pipe for the 1" EP flow-through multi-port tees. For more information, refer to the Uponor Piping Systems Installation Guide.		PEX-a Plumbing Systems		
Footnotes		Contact information		
-		Uponor Inc. 5925 148th Street West Apple Valley, MN 55124 T 800.321.4739 F 952.891.2008		
		Uponor Ltd. 6510 Kennedy Road Mississauga, ON L5T 2X4 T 888.594.7726 F 800.638.9517		