

Ensamblajes de accesorios para colectores ProPEX

Project information

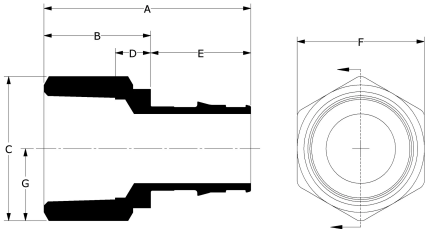
|                                |                 |
|--------------------------------|-----------------|
| Job name:                      | Location:       |
| Engineer:                      | Fecha de envío: |
| Contractor:                    | Presentada por: |
| Manufacturer's representative: | Approved by:    |

Technical data

|                         |       |
|-------------------------|-------|
| Material                | Brass |
| Prop 65 label required? | Yes   |

Product information and application use

The Uponor ProPEX® Fitting Assembly threads onto Uponor manifold loop outlets. The fitting features an R20 or R25 thread with a ProPEX connection to connect Uponor crosslinked polyethylene (PEX) tubing to the manifold in radiant heating and cooling applications.



| Part name  | Part no. | End Type 1  | End Type 2     | Cv    |
|--|----------|-------------|----------------|-------|
| 3/8" ProPEX Fitting Assembly, R20 Thread                         | Q4020375 | ProPEX 3/8" | ISO 228-G 3/4" | -     |
| 1/2" ProPEX Fitting Assembly, R20 Thread                         | Q4020500 | ProPEX 1/2" | ISO 228-G 3/4" | -     |
| 5/8" ProPEX Fitting Assembly, R20 Thread                         | Q4020625 | ProPEX 5/8" | ISO 228-G 3/4" | -     |
| 3/4" ProPEX Fitting Assembly, R20 Thread                         | Q4020750 | -           | -              | -     |
| 5/8" ProPEX Fitting Assembly for Commercial Manifold, R25 thread | Q4050625 | ProPEX 5/8" | ISO 228-G 1"   | 7.75  |
| 3/4" ProPEX Fitting Assembly for Commercial Manifold, R25 thread | Q4050750 | ProPEX 3/4" | ISO 228-G 1"   | 12.07 |
| 1" ProPEX Fitting Assembly for Commercial Manifold, R25 thread   | Q4051000 | ProPEX 1"   | ISO 228-G 1"   | 23    |

| Part name   | Part no. | Codes                     | Standards                       | Listings                   |
|---|----------|---------------------------|---------------------------------|----------------------------|
| Ensamblajes de accesorios para colectores ProPEX                                | All      | IMC IRC NBC of Canada UMC | ASTM F1960 CSA B137.5 ASTM F877 | cNSFus-rfh ICC-ES-PMG 1012 |
| In addition, the following parts have additional codes, standards, or listings: |          |                           |                                 |                            |
| 3/8" ProPEX Fitting Assembly, R20 Thread  | Q4020375 |                           | R20: ISO 228-G ¾"               |                            |
| 5/8" ProPEX Fitting Assembly for Commercial Manifold, R25 thread                | Q4050625 |                           | R25: ISO 228-G 1" NSF-14        | IAPMO-ES ICC PMG 1006      |
| 3/4" ProPEX Fitting Assembly for Commercial Manifold, R25 thread                | Q4050750 |                           | R25: ISO 228-G 1" NSF-14        | IAPMO-ES ICC PMG 1006      |
| 1" ProPEX Fitting Assembly for Commercial Manifold, R25 thread                  | Q4051000 |                           | R25: ISO 228-G 1" NSF-14        | IAPMO-ES ICC PMG 1006      |

Installation

R20 or R25 threads onto the Uponor manifold loop outlets. Compression end enables direct connection to Uponor PEX tubing. For more information, refer to the Uponor Radiant Floor Heating Installation Handbook. Accessories: Replacement O-ring for insert, R20 (A4021116); Replacement O-ring for insert, R25 (A4021000)

Related applications

Radiant Heating and Cooling Systems

Footnotes

-

Contact information

Uponor Inc.  
5925 148th Street West  
Apple Valley, MN 55124  
T 800.321.4739  
F 952.891.2008

Uponor Ltd.  
6510 Kennedy Road  
Mississauga, ON L5T 2X4  
T 888.594.7726  
F 800.638.9517