

Adaptadores con rosca macho de acero inoxidable ProPEX

Project information

|                                |                 |
|--------------------------------|-----------------|
| Job name:                      | Location:       |
| Engineer:                      | Fecha de envío: |
| Contractor:                    | Presentada por: |
| Manufacturer's representative: | Approved by:    |

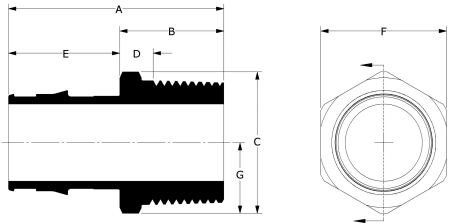
Technical data

|                       |                                     |
|-----------------------|-------------------------------------|
| Material              | Stainless Steel                     |
| Temp/pressure ratings | 73 °F (23 °C) at 160 psi (11 bar)   |
|                       | 180 °F (82 °C) at 100 psi (6.9 bar) |
|                       | 200 °F (93 °C) at 80 psi (5.5 bar)  |

Product information and application use

ProPEX® Stainless Steel Male Threaded Adapters are available for use with reverse osmosis, deionization, and distillation applications producing conditioned water. One end of the adapter is manufactured with the Uponor ProPEX Fitting for connections to Wirsbo AQUAPEX® tubing.

Note: Temperature and pressure ratings stated are hydrostatic ratings. For domestic hot-water (DHW) and DHW recirculation installations, operating conditions should not exceed 140°F (60°C) at 80 psi (5.5 bar) in accordance with ASTM F2023. For additional information regarding application-specific temperature and pressure ratings, refer to the Uponor PEX Piping Systems Design and Installation Manual.



| Part name   | Part no. | A [inch] | B [inch] | C [inch] | D [inch] | E [inch] | F [inch] | G [inch] | Cv   | Equivalent length through [ft] | End Type 1  |
|---|----------|----------|----------|----------|----------|----------|----------|----------|------|--------------------------------|-------------|
| ProPEX Stainless-steel Male Threaded Adapter, 1/2" PEX x 1/2" NPT | Q8525050 | 1.67     | 0.961    | 1        | 0.427    | 0.709    | 0.875    | 0.5      | 5    | 2.26                           | ProPEX 1/2" |
| ProPEX Stainless-steel Male Threaded Adapter, 3/4" PEX x 3/4" NPT | Q8527575 | 1.905    | 1.01     | 1.289    | 0.464    | 0.895    | 1.125    | 0.644    | 11.3 | 2.67                           | ProPEX 3/4" |
| ProPEX Stainless-steel Male Threaded Adapter, 1" PEX x 1" NPT     | Q8521010 | 2.32     | 1.139    | 1.578    | 0.456    | 1.181    | 1.375    | 0.789    | 19.9 | 0                              | ProPEX 1"   |

| Part name   | Part no. | End Type 2 | Weight per UOM [lbs/UOM] |
|---|----------|------------|--------------------------|
| ProPEX Stainless-steel Male Threaded Adapter, 1/2" PEX x 1/2" NPT | Q8525050 | MNPT 1/2"  | 0.52                     |
| ProPEX Stainless-steel Male Threaded Adapter, 3/4" PEX x 3/4" NPT | Q8527575 | MNPT 3/4"  | 0.2                      |
| ProPEX Stainless-steel Male Threaded Adapter, 1" PEX x 1" NPT     | Q8521010 | MNPT 1"    | 0                        |

| Part name  | Part no. | Codes                                      | Standards                             | Listings   |
|--|----------|--|---------------------------------------|--|
| Adaptadores con rosca macho de acero inoxidable ProPEX | All      | UPC IBC IRC IPC NPC of Canada UMC NSPC IMC | ASTM F1960 CSA B137.5 NSF/ANSI/CAN 61 | HUD MR 1269 ICC-ES-PMG cNSFus-pw IAPMO 3558 U.P.Code |

| Installation  | Related applications   |
|---|------------------------|
| Use the appropriate ProPEX Ring for the tubing. For more information, refer to the AQUAPEX Professional Plumbing Installation Handbook or Uponor Radiant Floor Installation Handbook. | PEX-a Plumbing Systems |

| Footnotes | Contact information  |
|-----------|--|
| -         | Uponor Inc.<br>5925 148th Street West<br>Apple Valley, MN 55124<br>T 800.321.4739<br>F 952.891.2008<br><br>Uponor Ltd.<br>6510 Kennedy Road<br>Mississauga, ON L5T 2X4<br>T 888.594.7726<br>F 800.638.9517 |