

Codos caídos TotalFit

Project Information

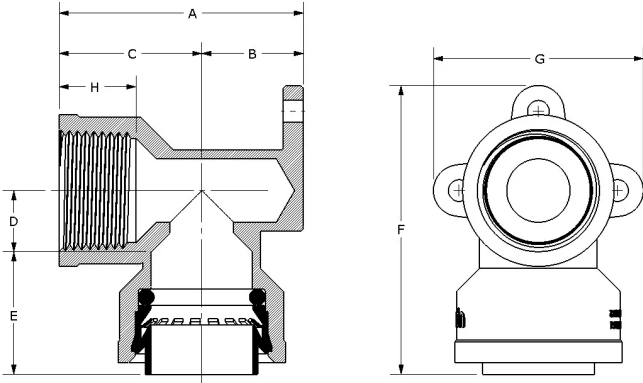
|                                |                 |
|--------------------------------|-----------------|
| Job name:                      | Location:       |
| Engineer:                      | Fecha de envío: |
| Contractor:                    | Presentada por: |
| Manufacturer's representative: | Approved by:    |

Technical data

|                         |  |
|-------------------------|--|
| Material                | Engineered Polymer   |
| Temp/pressure ratings   | 73 °F (23 °C) at 160 psi (11 bar)<br>180 °F (82 °C) at 100 psi (6.9 bar)<br>200 °F (93 °C) at 80 psi (5.5 bar) |
| Prop 65 label required? | No   |

Product information and application use

TotalFit™ is the professional-grade engineered polymer (EP) push-to-connect solution that provides greater value for residential projects with the same versatility and speed as brass push-to-connect fittings for PEX, PE-RT, CPVC, and copper piping systems.



| Part name                                 | Part no.  | A<br>[Inch] | B<br>[Inch] | C<br>[Inch] | D<br>[Inch] | E<br>[Inch] | F<br>[Inch] | G<br>[Inch] | H<br>[Inch] | End<br>Type<br>1 | End<br>Type<br>2 |
|---|-----------|-------------|-------------|-------------|-------------|-------------|-------------|-------------|-------------|------------------|------------------|
| TotalFit Drop Ear Elbow, 1/2" x 1/2" FNPT | TF4235050 | 1.752       | 0.709       | 1.043       | 0.433       | 0.835       | 2.122       | 1.551       | 0.669       | TotalFit<br>1/2" | FNPT<br>1/2"     |
| TotalFit Drop Ear Elbow, 3/4" x 3/4" FNPT | TF4237575 | 2.126       | 0.886       | 1.24        | 0.531       | 1.067       | 2.512       | 1.827       | 0.669       | TotalFit<br>3/4" | FNPT<br>3/4"     |

| Part name                                 | Part no.  | Weight per UOM [lbs/UOM] |
|---|-----------|--------------------------|
| TotalFit Drop Ear Elbow, 1/2" x 1/2" FNPT | TF4235050 | 0.05                     |
| TotalFit Drop Ear Elbow, 3/4" x 3/4" FNPT | TF4237575 | 0.09                     |

| Part name             | Part no. | Codes  | Standards  | Listings                                      |
|-----------------------|----------|--|--|---|
| Codos caídos TotalFit | All      | UPC IRC IPC NPC of<br>Canada UMC CMC CPC IMC | ASTM F877 NSF/ANSI/CAN<br>372 NSF/ANSI/CAN 61 NSF/ANSI<br>14 ASSE 1061 | IAPMO K-13573 IAPMO K-<br>13571 IAPMO K-13572 |

| Installation  | Related applications                   |
|---|--|
| Install on PEX, PE-RT, CPVC, and copper piping systems. Use deburr and depth tool to remove excess material or burrs and mark the appropriate depth on pipe. If using flexible PEX or PE-RT, install the insert inside the pipe first before making the connection. Only use PTFE thread seal tape (with a minimum of three wraps) to seal male and female adapters. Refer to the Uponor TotalFit Instruction Sheet for additional information. | Plumbing<br>Hydronic Heating & Cooling |

| Footnotes | Contact information  |
|-----------|--|
| -         | Uponor Inc.<br>5925 148th Street West<br>Apple Valley, MN 55124<br>T 800.321.4739<br>F 952.891.2008<br>Uponor Ltd.<br>6510 Kennedy Road<br>Mississauga, ON L5T 2X4<br>T 888.594.7726<br>F 800.638.9517 |