

Adaptadores con rosca hembra de bronce ProPEX

Project information

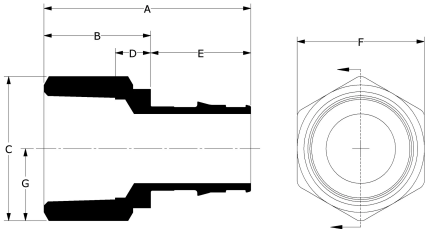
Job name:	Location:
Engineer:	Fecha de envío:
Contractor:	Presentada por:
Manufacturer's representative:	Approved by:

Technical data

Material	Brass
Temp/pressure ratings	73 °F (23 °C) at 160 psi (11 bar) 180 °F (82 °C) at 100 psi (6.9 bar) 200 °F (93 °C) at 80 psi (5.5 bar)
Prop 65 label required?	Yes

Product information and application use

ProPEX® brass female threaded adapters connect Uponor PEX pipe to female NPT threads. Use the adapters in hydronic heating and cooling systems. One end of the adapter is manufactured with the Uponor ProPEX fitting for connection to Wirsbo hePEX™ pipe; the other end is manufactured to adapt a male thread. These adapters are not safe for direct burial in soil. Note: Not for potable use.



Part name	Part no.	A [inch]	B [inch]	C [inch]	D [inch]	E [inch]	F [inch]	End Type 1	End Type 2	G [inch]	Cv
ProPEX Brass Female Threaded Adapter, 1/2" PEX x 1/2" NPT	Q5575050	1.569	0.86	1.139	0.326	0.709	1.0	ProPEX 1/2"	FNPT 1/2"	0.57	4.8
ProPEX Brass Female Threaded Adapter, 5/8" PEX x 3/4" NPT	Q4576375	1.906	1.04	1.345	0.486	0.866	1.187	ProPEX 5/8"	FNPT 3/4"	-	-
ProPEX Brass Female Threaded Adapter, 3/4" PEX x 3/4" NPT	Q5577575	1.845	0.9	1.356	0.347	0.945	1.187	ProPEX 3/4"	FNPT 3/4"	0.678	12
ProPEX Brass Female Threaded Adapter, 3/4" PEX x 1" NPT	Q5577510	2.145	1.2	1.717	0.52	0.945	1.5	ProPEX 3/4"	FNPT 1"	0.858	10.8
ProPEX Brass Female Threaded Adapter, 1" PEX x 1" NPT	Q5571010	2.381	1.2	1.717	0.52	1.181	1.5	ProPEX 1"	FNPT 1"	0.858	19.7
ProPEX Brass Female Threaded Adapter, 1 1/4" PEX x 1 1/4" NPT	Q5571313	2.57	1.125	2.294	0.415	1.445	2.0	ProPEX 1-1/4"	FNPT 1-1/4"	1.147	30.8
ProPEX Brass Female Threaded Adapter, 1 1/2" PEX x 1 1/2" NPT	Q5571515	2.854	1.15	2.583	0.42	1.704	2.25	ProPEX 1-1/2"	FNPT 1-1/2"	1.291	40.9
ProPEX Brass Female Threaded Adapter, 2" PEX x 2" NPT	Q5572020	3.547	1.4	3.449	0.703	2.147	3.0	ProPEX 2"	FNPT 2"	1.724	77.7

Part name	Part no.	Equivalent length through [ft]	Weight per UOM [lbs/UOM]
ProPEX Brass Female Threaded Adapter, 1/2" PEX x 1/2" NPT	Q5575050	2.5	0.14
ProPEX Brass Female Threaded Adapter, 5/8" PEX x 3/4" NPT	Q4576375	-	0.2
ProPEX Brass Female Threaded Adapter, 3/4" PEX x 3/4" NPT	Q5577575	2.3	0.2
ProPEX Brass Female Threaded Adapter, 3/4" PEX x 1" NPT	Q5577510	3.6	0.4
ProPEX Brass Female Threaded Adapter, 1" PEX x 1" NPT	Q5571010	3.8	0.4
ProPEX Brass Female Threaded Adapter, 1 1/4" PEX x 1 1/4" NPT	Q5571313	4.8	0.67
ProPEX Brass Female Threaded Adapter, 1 1/2" PEX x 1 1/2" NPT	Q5571515	5.1	1.2
ProPEX Brass Female Threaded Adapter, 2" PEX x 2" NPT	Q5572020	5.7	2.2

Part name	Part no.	Codes	Standards	Listings
Adaptadores con rosca hembra de bronce ProPEX	All	IMC IBC IRC NPC of Canada UMC	ASTM F1960 CSA B137.5 NSF-14 ASTM F877	IAPMO-ES ICC-ES-PMG cNSFus-rfh

Installation		Related applications	
Use the appropriate ProPEX ring for Uponor PEX pipe (sold separately). Refer to the Uponor Radiant Installation Handbook, Complete Design Assistance Manual (CDAM), or Hydronic Piping Design Assistance Manual (HPDAM) for additional information.		Radiant Heating and Cooling Systems	
		Permafrost Protection Systems	
		Turf Conditioning Systems	
		Hydronic Piping Systems	
Footnotes		Contact information	
-		Uponor Inc.	
		5925 148th Street West	
		Apple Valley, MN 55124	
		T 800.321.4739	
		F 952.891.2008	
		Uponor Ltd.	
		6510 Kennedy Road	
		Mississauga, ON L5T 2X4	
		T 888.594.7726	
		F 800.638.9517	