

Adaptadores de toma de CPVC y bronce sin plomo (LF) ProPEX



Project information

Job name:	Location:
Engineer:	Fecha de envío:
Contractor:	Presentada por:
Manufacturer's representative:	Approved by:

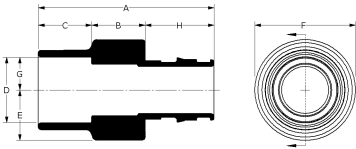
Technical data

Material	LF Brass
Subcomponent Material	Body: LF Brass and CPVC O-ring: EPDM
Temp/pressure ratings	73 °F (23 °C) at 160 psi (11 bar) 180 °F (82 °C) at 100 psi (6.9 bar) 200 °F (93 °C) at 80 psi (5.5 bar)
Prop 65 label required?	Yes

Product information and application use

ProPEX® Lead-free (LF) Brass CPVC Socket Adapters transition Uponor PEX tubing to CPVC copper tube size (CTS) pipe for use in hot and cold domestic potable water systems and hydronic radiant heating and cooling systems.

Note: Temperature and pressure ratings stated are hydrostatic ratings. For domestic hot-water (DHW) and DHW recirculation installations, operating conditions should not exceed 140°F (60°C) at 80 psi (5.5 bar) in accordance with ASTM F2023. For additional information regarding application-specific temperature and pressure ratings, refer to the Uponor PEX Piping Systems Design and Installation Manual.



Part name	Part no.	End Type 1	End Type 2
ProPEX LF Brass x CPVC Socket Adapter, 1 1/4" PEX x 1 1/4" CPVC (CTS)	CP4511313	ProPEX 1-1/4"	CPVC 1-1/4"
ProPEX LF Brass x CPVC Socket Adapter, 1 1/2" PEX x 1 1/2" CPVC (CTS)	CP4511515	ProPEX 1-1/2"	CPVC 1-1/2"
ProPEX LF Brass x CPVC Socket Adapter, 2" PEX x 2" CPVC (CTS)	CP4512020	ProPEX 2"	CPVC 2"

Part name	Part no.	Codes	Standards	Listings
Adaptadores de toma de CPVC y bronce sin plomo (LF) ProPEX	All	UPC IBC IRC IPC NPC of Canada UMC NSPC IMC	ASTM F877 ASTM F1960 CSA B137.5 ASTM D2846	IAPMO-ES HUD MR 1269 ICC-ES-PMG cNSFus-pw-G U.P.Code cQAIus P321
In addition, the following parts have additional codes, standards, or listings:				
ProPEX LF Brass x CPVC Socket Adapter, 1 1/4" PEX x 1 1/4" CPVC (CTS)	CP4511313		NSF-372 NSF-61 NSF-14	
ProPEX LF Brass x CPVC Socket Adapter, 1 1/2" PEX x 1 1/2" CPVC (CTS)	CP4511515		NSF/ANSI/CAN 372 NSF/ANSI/CAN 61 NSF/ANSI 14	
ProPEX LF Brass x CPVC Socket Adapter, 2" PEX x 2" CPVC (CTS)	CP4512020		NSF/ANSI/CAN 372 NSF/ANSI/CAN 61 NSF/ANSI 14	

Installation

Use the appropriate Uponor ProPEX Ring for the tubing (sold separately). Refer to the Uponor AquaPEX® Professional Plumbing Installation Guide or Uponor Radiant Floor Heating Installation Handbook for additional information. Follow all CPVC instructions and guidelines for proper CPVC connections.

Related applications

- PEX-a Plumbing Systems
- Radiant Heating and Cooling Systems
- Permafrost Protection Systems
- Turf Conditioning Systems

Footnotes

-

Contact information

Uponor Inc.
5925 148th Street West
Apple Valley, MN 55124
T 800.321.4739
F 952.891.2008

Uponor Ltd.
6510 Kennedy Road
Mississauga, ON L5T 2X4
T 888.594.7726
F 800.638.9517