

Adaptadores con rosca macho TotalFit

Project information

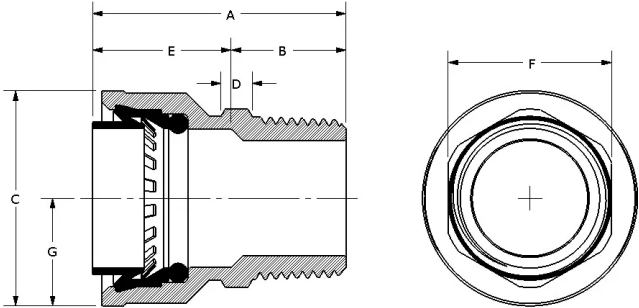
|                                |                 |
|--------------------------------|-----------------|
| Job name:                      | Location:       |
| Engineer:                      | Fecha de envío: |
| Contractor:                    | Presentada por: |
| Manufacturer's representative: | Approved by:    |

Technical data

|                         |  |
|-------------------------|--|
| Material                | Engineered Polymer   |
| Temp/pressure ratings   | 73 °F (23 °C) at 160 psi (11 bar)<br>180 °F (82 °C) at 100 psi (6.9 bar)<br>200 °F (93 °C) at 80 psi (5.5 bar) |
| Prop 65 label required? | No   |

Product information and application use

TotalFit™ is the professional-grade engineered polymer (EP) push-to-connect solution that provides greater value for residential projects with the same versatility and speed as brass push-to-connect fittings for PEX, PE-RT, CPVC, and copper piping systems.



| Part name                                       | Part no.  | A<br>[inch] | B<br>[inch] | C<br>[inch] | D<br>[inch] | E<br>[inch] | F<br>[inch] | G<br>[inch] | End<br>Type<br>1 | End<br>Type<br>2 | Weight<br>per UOM<br>[lbs/UOM] |
|---|-----------|-------------|-------------|-------------|-------------|-------------|-------------|-------------|------------------|------------------|--------------------------------|
| TotalFit Male Threaded Adapter, 1" x 1" NPT     | TF4521010 | 2.075       | 0.941       | 1.76        | 0.256       | 1.134       | 1.339       | 0.88        | TotalFit<br>1"   | MNPT<br>1"       | 0.08                           |
| TotalFit Male Threaded Adapter, 1/2" x 1/2" NPT | TF4525050 | 1.693       | 0.78        | 1.13        | 0.256       | 0.913       | 0.886       | 0.565       | TotalFit<br>1/2" | MNPT<br>1/2"     | 0.03                           |
| TotalFit Male Threaded Adapter, 1/2" x 3/4" NPT | TF4525075 | 1.713       | 0.799       | 1.13        | 0.256       | 0.913       | 1.063       | 0.565       | TotalFit<br>1/2" | MNPT<br>3/4"     | 0.04                           |
| TotalFit Male Threaded Adapter, 3/4" x 1" NPT   | TF4527510 | 2.014       | 0.947       | 1.457       | 0.256       | 1.067       | 1.339       | 0.728       | TotalFit<br>3/4" | MNPT<br>1"       | 0.06                           |
| TotalFit Male Threaded Adapter, 3/4" x 3/4" NPT | TF4527575 | 1.933       | 0.866       | 1.457       | 0.256       | 1.067       | 1.063       | 0.728       | TotalFit<br>3/4" | MNPT<br>3/4"     | 0.05                           |

| Part name                               | Part no. | Codes  | Standards  | Listings                                      |
|---|----------|--|--|---|
| Adaptadores con rosca macho<br>TotalFit | All      | UPC IMC IPC IRC UMC NPC of<br>Canada CPC CMC | NSF/ANSI 14 NSF/ANSI/CAN<br>61 NSF/ANSI/CAN 372 ASTM<br>F877 ASSE 1061 | IAPMO K-13573 IAPMO K-<br>13572 IAPMO K-13571 |

Installation

Install on PEX, PE-RT, CPVC, and copper piping systems. Use deburr and depth tool to remove excess material or burrs and mark the appropriate depth on pipe. If using flexible PEX or PE-RT, install the insert inside the pipe first before making the connection. Only use PTFE thread seal tape (with a minimum of three wraps) to seal male and female adapters. Refer to the Uponor TotalFit Instruction Sheet for additional information.

Related applications

- Plumbing
- Hydronic Heating & Cooling

Footnotes

-

Contact information

Uponor Inc.  
5925 148th Street West  
Apple Valley, MN 55124  
T 800.321.4739  
F 952.891.2008

Uponor Ltd.  
6510 Kennedy Road  
Mississauga, ON L5T 2X4  
T 888.594.7726  
F 800.638.9517