

# Accesorios ChlorFIT T reductora

## Project Information

|                                |                 |
|--------------------------------|-----------------|
| Job name:                      | Location:       |
| Engineer:                      | Fecha de envío: |
| Contractor:                    | Presentada por: |
| Manufacturer's representative: | Approved by:    |

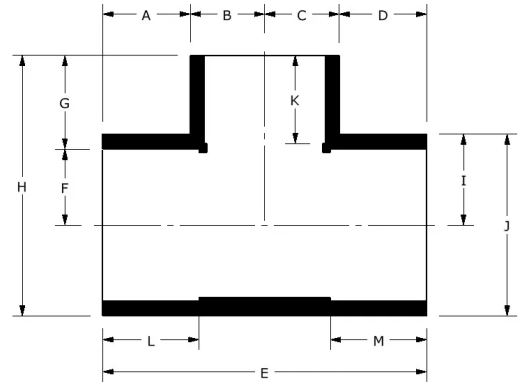
## Technical data

Material CPVC

## Product information and application use

Utilice las camisetas de CPVC Corzan® ChlorFIT® Schedule 80 de Uponor en sistemas de agua potable fría y caliente, así como en aplicaciones de calefacción y refrigeración hidrónicas.

Corzan® es una marca comercial registrada de Lubrizol Advanced Materials, Inc.



| Part name  | Part no.  | A [inch] | B [inch] | C [inch] | D [inch] | E [inch] | F [inch] | G [inch] | H [inch] | I [inch] | J [inch] |
|--|-----------|----------|----------|----------|----------|----------|----------|----------|----------|----------|----------|
| 3/4" x 1/2" CPVC 80 Reducing Tee (SxSxS)             | 9801101   | 1.03     | 0.58     | 0.58     | 1.03     | 3.22     | 0.525    | 1.085    | 2.328    | 0.719    | 1.437    |
| 1" x 1/2" CPVC 80 Reducing Tee (SxSxS)               | 9801130   | 1.28     | 0.58     | 0.58     | 1.28     | 3.72     | 0.657    | 0.972    | 2.485    | 0.855    | 1.71     |
| 1" x 3/4" CPVC 80 Reducing Tee (SxSxS)               | 9801131   | 1.165    | 0.695    | 0.695    | 1.165    | 3.72     | 0.657    | 1.202    | 2.715    | 0.855    | 1.71     |
| 1-1/4" x 1/2" CPVC 80 Reducing Tee (SxSxS), Bushed   | 9801166FB | 1.138    | 0.854    | 0.854    | 1.138    | 3.985    | 0.83     | 1.52     | 3.393    | 1.043    | 2.087    |
| 1-1/4" x 3/4" CPVC 80 Reducing Tee (SxSxS), Bushed   | 9801167FB | 1.138    | 0.854    | 0.854    | 1.138    | 3.985    | 0.83     | 1.517    | 3.391    | 1.043    | 2.087    |
| 1-1/4" x 1" CPVC 80 Reducing Tee (SxSxS)             | 9801168   | 1.122    | 0.855    | 0.855    | 1.122    | 3.954    | 0.83     | 1.21     | 3.08     | 1.04     | 2.08     |
| 1-1/2" x 1/2" CPVC 80 Reducing Tee (SxSxS)           | 9801209   | 1.334    | 0.58     | 0.58     | 1.334    | 3.828    | 0.95     | 0.963    | 3.08     | 1.167    | 2.335    |
| 1-1/2" x 3/4" CPVC 80 Reducing Tee (SxSxS)           | 9801210   | 1.281    | 0.695    | 0.695    | 1.281    | 3.952    | 0.95     | 1.09     | 3.207    | 1.167    | 2.335    |
| 1-1/2" x 1" CPVC 80 Reducing Tee (SxSxS)             | 9801211   | 1.246    | 0.855    | 0.855    | 1.246    | 4.202    | 0.95     | 1.21     | 3.328    | 1.167    | 2.335    |
| 1-1/2" x 1-1/4" CPVC 80 Reducing Tee (SxSxS), Bushed | 9801212FB | 1.27     | 1.169    | 1.169    | 1.27     | 4.878    | 0.95     | 1.793    | 3.912    | 1.169    | 2.338    |
| 2" x 1/2" CPVC 80 Reducing Tee (SxSxS)               | 9801247   | 1.46     | 0.58     | 0.58     | 1.46     | 4.08     | 1.187    | 0.972    | 3.585    | 1.425    | 2.85     |
| 2" x 3/4" CPVC 80 Reducing Tee (SxSxS)               | 9801248   | 1.407    | 0.695    | 0.695    | 1.407    | 4.204    | 1.187    | 1.102    | 3.714    | 1.425    | 2.85     |
| 2" x 1" CPVC 80 Reducing Tee (SxSxS)                 | 9801249   | 1.372    | 0.855    | 0.855    | 1.372    | 4.454    | 1.187    | 1.222    | 3.835    | 1.425    | 2.85     |
| 2" x 1-1/4" CPVC 80 Reducing Tee (SxSxS), Bushed     | 9801250FB | 1.366    | 1.444    | 1.444    | 1.366    | 5.62     | 1.187    | 1.919    | 4.55     | 1.444    | 2.888    |
| 2" x 1-1/2" CPVC 80 Reducing Tee (SxSxS)             | 9801251   | 1.372    | 1.167    | 1.167    | 1.372    | 5.08     | 1.187    | 1.472    | 4.085    | 1.425    | 2.85     |
| 2-1/2" x 1/2" CPVC 80 Reducing Tee (SxSxS), Bushed   | 9801287FB | 1.554    | 1.496    | 1.496    | 1.554    | 6.1      | 1.437    | 1.91     | 5.091    | 1.743    | 3.487    |
| 2-1/2" x 3/4" CPVC 80 Reducing Tee (SxSxS), Bushed   | 9801288FB | 1.554    | 1.496    | 1.496    | 1.554    | 6.1      | 1.437    | 1.915    | 5.096    | 1.743    | 3.487    |
| 2-1/2" x 1" CPVC 80 Reducing Tee (SxSxS), Bushed     | 9801289FB | 1.554    | 1.496    | 1.496    | 1.554    | 6.1      | 1.437    | 1.924    | 5.105    | 1.743    | 3.487    |
| 2-1/2" x 1-1/4" CPVC 80 Reducing Tee (SxSxS), Bushed | 9801290FB | 1.554    | 1.496    | 1.496    | 1.554    | 6.1      | 1.437    | 1.904    | 5.085    | 1.743    | 3.487    |
| 2-1/2" x 1-1/2" CPVC 80 Reducing Tee (SxSxS), Bushed | 9801291FB | 1.554    | 1.496    | 1.496    | 1.554    | 6.1      | 1.437    | 1.91     | 5.091    | 1.743    | 3.487    |
| 2-1/2" x 2" CPVC 80 Reducing Tee (SxSxS)             | 9801292   | 1.54     | 1.5      | 1.5      | 1.54     | 6.08     | 1.437    | 1.602    | 4.785    | 1.745    | 3.49     |
| 3" x 1/2" CPVC 80 Reducing Tee (SxSxS), Bushed       | 9801333FB | 1.766    | 1.43     | 1.43     | 1.766    | 6.392    | 1.75     | 1.926    | 5.758    | 2.081    | 4.163    |
| 3" x 3/4" CPVC 80 Reducing Tee (SxSxS), Bushed       | 9801334FB | 1.766    | 1.43     | 1.43     | 1.766    | 6.392    | 1.75     | 1.932    | 5.763    | 2.081    | 4.163    |
| 3" x 1" CPVC 80 Reducing Tee (SxSxS), Bushed         | 9801335FB | 1.766    | 1.43     | 1.43     | 1.766    | 6.392    | 1.75     | 1.941    | 5.772    | 2.081    | 4.163    |
| 3" x 1-1/4" CPVC 80 Reducing Tee (SxSxS), Bushed     | 9801336FB | 1.766    | 1.43     | 1.43     | 1.766    | 6.392    | 1.75     | 1.92     | 5.752    | 2.081    | 4.163    |
| 3" x 1-1/2" CPVC 80 Reducing Tee (SxSxS), Bushed     | 9801337FB | 1.766    | 1.43     | 1.43     | 1.766    | 6.392    | 1.75     | 1.926    | 5.758    | 2.081    | 4.163    |

|  |           |       |       |       |       |        |       |       |        |       |       |
|--|-----------|-------|-------|-------|-------|--------|-------|-------|--------|-------|-------|
| 3" x 2" CPVC 80 Reducing Tee (SxSxS)                     | 9801338   | 1.746 | 1.425 | 1.425 | 1.746 | 6.342  | 1.75  | 1.6   | 5.425  | 2.075 | 4.15  |
| 3" x 2-1/2" CPVC 80 Reducing Tee (SxSxS), Bushed         | 9801339FB | 1.643 | 2.081 | 2.081 | 1.643 | 7.45   | 1.75  | 2.315 | 6.146  | 2.081 | 4.163 |
| 4" x 1/2" CPVC 80 Reducing Tee (SxSxS), Bushed           | 9801415FB | 2.076 | 1.446 | 1.446 | 2.076 | 7.046  | 2.25  | 1.935 | 6.796  | 2.611 | 5.221 |
| 4" x 3/4" CPVC 80 Reducing Tee (SxSxS), Bushed           | 9801416FB | 2.076 | 1.446 | 1.446 | 2.076 | 7.046  | 2.25  | 1.941 | 6.802  | 2.611 | 5.221 |
| 4" x 1" CPVC 80 Reducing Tee (SxSxS), Bushed             | 9801417FB | 2.106 | 1.445 | 1.445 | 2.106 | 7.102  | 2.259 | 1.891 | 6.765  | 2.615 | 5.23  |
| 4" x 1-1/4" CPVC 80 Reducing Tee (SxSxS), Bushed         | 9801418FB | 2.076 | 1.446 | 1.446 | 2.076 | 7.046  | 2.25  | 1.93  | 6.79   | 2.611 | 5.221 |
| 4" x 1-1/2" CPVC 80 Reducing Tee (SxSxS), Bushed         | 9801419FB | 2.076 | 1.446 | 1.446 | 2.076 | 7.046  | 2.25  | 1.935 | 6.796  | 2.611 | 5.221 |
| 4" x 2" CPVC 80 Reducing Tee (SxSxS)                     | 9801420   | 2.106 | 1.445 | 1.445 | 2.106 | 7.102  | 2.25  | 1.62  | 6.485  | 2.615 | 5.23  |
| 4" x 2-1/2" CPVC 80 Reducing Tee (SxSxS), Bushed         | 9801421FB | 2.056 | 2.083 | 2.083 | 2.056 | 8.278  | 2.25  | 2.373 | 7.252  | 2.628 | 5.257 |
| 4" x 3" CPVC 80 Reducing Tee (SxSxS)                     | 9801422   | 2.039 | 2.075 | 2.075 | 2.039 | 8.228  | 2.25  | 1.98  | 6.845  | 2.615 | 5.23  |
| 6" x 1/2" CPVC 80 Reducing Tee (SxSxS), Bushed           | 9801523FB | 3.929 | 2.629 | 2.629 | 3.929 | 13.115 | 3.313 | 4.111 | 11.21  | 3.787 | 7.573 |
| 6" x 3/4" CPVC 80 Reducing Tee (SxSxS), Bushed           | 9801524FB | 3.929 | 2.629 | 2.629 | 3.929 | 13.115 | 3.313 | 4.117 | 11.215 | 3.787 | 7.573 |
| 6" x 1" CPVC 80 Reducing Tee (SxSxS), Bushed             | 9801525FB | 3.929 | 2.629 | 2.629 | 3.929 | 13.115 | 3.313 | 4.125 | 11.224 | 3.787 | 7.573 |
| 6" x 1-1/4" CPVC 80 Reducing Tee (SxSxS), Bushed         | 9801526FB | 3.929 | 2.629 | 2.629 | 3.929 | 13.115 | 3.313 | 4.105 | 11.204 | 3.787 | 7.573 |
| 6" x 1-1/2" CPVC 80 Reducing Tee (SxSxS), Bushed         | 9801527FB | 3.929 | 2.629 | 2.629 | 3.929 | 13.115 | 3.313 | 4.111 | 11.21  | 3.787 | 7.573 |
| 6" x 2" CPVC 80 Reducing Tee (SxSxS)                     | 9801528   | 3.013 | 1.437 | 1.437 | 3.013 | 8.9    | 3.323 | 1.927 | 9.047  | 3.797 | 7.594 |
| 6" x 2-1/2" CPVC 80 Reducing Tee (SxSxS), Bushed, 2 Step | 9801529FB | 3.929 | 2.629 | 2.629 | 3.929 | 13.115 | 3.313 | 4.204 | 11.302 | 3.787 | 7.573 |
| 6" x 3" CPVC 80 Reducing Tee (SxSxS), Bushed             | 9801530FB | 3.929 | 2.629 | 2.629 | 3.929 | 13.115 | 3.313 | 3.9   | 11     | 3.787 | 7.573 |
| 6" x 4" CPVC 80 Reducing Tee (SxSxS)                     | 9801532   | 2.725 | 2.635 | 2.635 | 2.725 | 10.72  | 3.313 | 2.487 | 9.59   | 3.79  | 7.58  |
| 8" x 3/4" CPVC 80 Reducing Tee (SxSxS), Bushed, 3 Step   | 9801574FB | 3.819 | 3.794 | 3.794 | 3.819 | 15.226 | 4.313 | 4.577 | 13.759 | 4.869 | 9.738 |
| 8" x 1" CPVC 80 Reducing Tee (SxSxS), Bushed, 2 Step     | 9801575FB | 3.819 | 3.794 | 3.794 | 3.819 | 15.226 | 4.313 | 4.312 | 13.493 | 4.869 | 9.738 |
| 8" x 1-1/2" CPVC 80 Reducing Tee (SxSxS), Bushed, 2 Step | 9801577FB | 3.819 | 3.794 | 3.794 | 3.819 | 15.226 | 4.313 | 4.315 | 13.496 | 4.869 | 9.738 |
| 8" x 2" CPVC 80 Reducing Tee (SxSxS), Bushed, 2 Step     | 9801578FB | 3.819 | 3.794 | 3.794 | 3.819 | 15.226 | 4.313 | 4.24  | 13.422 | 4.869 | 9.738 |
| 8" x 2-1/2" CPVC 80 Reducing Tee (SxSxS), Bushed, 2 Step | 9801579FB | 3.819 | 3.794 | 3.794 | 3.819 | 15.226 | 4.313 | 4.162 | 13.343 | 4.869 | 9.738 |
| 8" x 3" CPVC 80 Reducing Tee (SxSxS), Bushed             | 9801580FB | 3.819 | 3.794 | 3.794 | 3.819 | 15.226 | 4.313 | 3.867 | 13.048 | 4.869 | 9.738 |
| 8" x 4" CPVC 80 Reducing Tee (SxSxS), Bushed             | 9801582FB | 3.819 | 3.794 | 3.794 | 3.819 | 15.226 | 4.313 | 3.879 | 13.061 | 4.869 | 9.738 |
| 8" x 6" CPVC 80 Reducing Tee (SxSxS)                     | 9801585   | 4.789 | 3.82  | 3.82  | 4.789 | 17.218 | 4.313 | 3.374 | 12.528 | 4.843 | 9.685 |

| Part name  | Part no.  | K [inch] | L [inch] | M [inch] | End Type 1    | End Type 2    | End Type 3  | Operating Temperature 1 [°F]     | Operating Temperature 2 [°F]      | Weight per UOM [lbs/UOM] |
|--|-----------|----------|----------|----------|---------------|---------------|-------------|----------------------------------|-----------------------------------|--------------------------|
| 3/4" x 1/2" CPVC 80 Reducing Tee (SxSxS)           | 9801101   | 0.882    | 1.008    | 1.008    | Socket 3/4"   | Socket 3/4"   | Socket 1/2" | 73 °F (23 °C) at 690 psi (23 °C) | 180 °F (82 °C) at 170 psi (82 °C) | 0.25                     |
| 1" x 1/2" CPVC 80 Reducing Tee (SxSxS)             | 9801130   | 0.882    | 1.133    | 1.133    | Socket 1"     | Socket 1"     | Socket 1/2" | 73 °F (23 °C) at 630 psi (23 °C) | 180 °F (82 °C) at 155 psi (82 °C) | 0.33                     |
| 1" x 3/4" CPVC 80 Reducing Tee (SxSxS)             | 9801131   | 1.008    | 1.133    | 1.133    | Socket 1"     | Socket 1"     | Socket 3/4" | 73 °F (23 °C) at 630 psi (23 °C) | 180 °F (82 °C) at 155 psi (82 °C) | 0.35                     |
| 1-1/4" x 1/2" CPVC 80 Reducing Tee (SxSxS), Bushed | 9801166FB | 0.883    | 1.265    | 1.265    | Socket 1-1/4" | Socket 1-1/4" | Socket 1/2" | 73 °F (23 °C) at 520 psi (23 °C) | 180 °F (82 °C) at 130 psi (82 °C) | 0.59                     |
| 1-1/4" x 3/4" CPVC 80 Reducing Tee (SxSxS), Bushed | 9801167FB | 1.022    | 1.265    | 1.265    | Socket 1-1/4" | Socket 1-1/4" | Socket 3/4" | 73 °F (23 °C) at 520 psi (23 °C) | 180 °F (82 °C) at 130 psi (82 °C) | 0.57                     |
| 1-1/4" x 1" CPVC 80 Reducing Tee (SxSxS)           | 9801168   | 1.133    | 1.258    | 1.258    | Socket 1-1/4" | Socket 1-1/4" | Socket 1"   | 73 °F (23 °C) at 520 psi (23 °C) | 180 °F (82 °C) at 130 psi (82 °C) | 0.47                     |
| 1-1/2" x 1/2" CPVC 80 Reducing Tee (SxSxS)         | 9801209   | 0.882    | 1.383    | 1.383    | Socket 1-1/2" | Socket 1-1/2" | Socket 1/2" | 73 °F (23 °C) at 470 psi (23 °C) | 180 °F (82 °C) at 115 psi (82 °C) | 0.49                     |
| 1-1/2" x 3/4" CPVC 80 Reducing Tee (SxSxS)         | 9801210   | 1.008    | 1.383    | 1.383    | Socket 1-1/2" | Socket 1-1/2" | Socket 3/4" | 73 °F (23 °C) at 470 psi (23 °C) | 180 °F (82 °C) at 115 psi (82 °C) | 1.12                     |

|   |           |       |       |       |                  |                  |                  |                                     |   |      |
|---|-----------|-------|-------|-------|------------------|------------------|------------------|-------------------------------------|---|------|
| 1-1/2" x 1" CPVC 80 Reducing Tee (SxSxS)                | 9801211   | 1.133 | 1.383 | 1.383 | Socket<br>1-1/2" | Socket<br>1-1/2" | Socket<br>1"     | 73 °F (23 °C) at<br>470 psi (23 °C) | 180 °F (82 °C)<br>at 115 psi (82<br>°C) | 0.83 |
| 1-1/2" x 1-1/4" CPVC 80 Reducing Tee (SxSxS),<br>Bushed | 9801212FB | 1.272 | 1.404 | 1.404 | Socket<br>1-1/2" | Socket<br>1-1/2" | Socket<br>1-1/4" | 73 °F (23 °C) at<br>470 psi (23 °C) | 180 °F (82 °C)<br>at 115 psi (82<br>°C) | 0.82 |
| 2" x 1/2" CPVC 80 Reducing Tee (SxSxS)                  | 9801247   | 0.882 | 1.509 | 1.509 | Socket<br>2"     | Socket<br>2"     | Socket<br>1/2"   | 73 °F (23 °C) at<br>400 psi (23 °C) | 180 °F (82 °C)<br>at 100 psi (82<br>°C) | 0.49 |
| 2" x 3/4" CPVC 80 Reducing Tee (SxSxS)                  | 9801248   | 1.008 | 1.509 | 1.509 | Socket<br>2"     | Socket<br>2"     | Socket<br>3/4"   | 73 °F (23 °C) at<br>400 psi (23 °C) | 180 °F (82 °C)<br>at 100 psi (82<br>°C) | 1.22 |
| 2" x 1" CPVC 80 Reducing Tee (SxSxS)                    | 9801249   | 1.133 | 1.509 | 1.509 | Socket<br>2"     | Socket<br>2"     | Socket<br>1"     | 73 °F (23 °C) at<br>400 psi (23 °C) | 180 °F (82 °C)<br>at 100 psi (82<br>°C) | 0.97 |
| 2" x 1-1/4" CPVC 80 Reducing Tee (SxSxS),<br>Bushed     | 9801250FB | 1.27  | 1.513 | 1.513 | Socket<br>2"     | Socket<br>2"     | Socket<br>1-1/4" | 73 °F (23 °C) at<br>400 psi (23 °C) | 180 °F (82 °C)<br>at 100 psi (82<br>°C) | 1.19 |
| 2" x 1-1/2" CPVC 80 Reducing Tee (SxSxS)                | 9801251   | 1.383 | 1.509 | 1.509 | Socket<br>2"     | Socket<br>2"     | Socket<br>1-1/2" | 73 °F (23 °C) at<br>400 psi (23 °C) | 180 °F (82 °C)<br>at 100 psi (82<br>°C) | 1.07 |
| 2-1/2" x 1/2" CPVC 80 Reducing Tee (SxSxS),<br>Bushed   | 9801287FB | 0.903 | 1.768 | 1.768 | Socket<br>2-1/2" | Socket<br>2-1/2" | Socket<br>1/2"   | 73 °F (23 °C) at<br>420 psi (23 °C) | 180 °F (82 °C)<br>at 105 psi (82<br>°C) | 1.58 |
| 2-1/2" x 3/4" CPVC 80 Reducing Tee (SxSxS),<br>Bushed   | 9801288FB | 1.022 | 1.768 | 1.768 | Socket<br>2-1/2" | Socket<br>2-1/2" | Socket<br>3/4"   | 73 °F (23 °C) at<br>420 psi (23 °C) | 180 °F (82 °C)<br>at 105 psi (82<br>°C) | 1.59 |
| 2-1/2" x 1" CPVC 80 Reducing Tee (SxSxS),<br>Bushed     | 9801289FB | 1.143 | 1.768 | 1.768 | Socket<br>2-1/2" | Socket<br>2-1/2" | Socket<br>1"     | 73 °F (23 °C) at<br>420 psi (23 °C) | 180 °F (82 °C)<br>at 105 psi (82<br>°C) | 1.59 |
| 2-1/2" x 1-1/4" CPVC 80 Reducing Tee (SxSxS),<br>Bushed | 9801290FB | 1.27  | 1.768 | 1.768 | Socket<br>2-1/2" | Socket<br>2-1/2" | Socket<br>1-1/4" | 73 °F (23 °C) at<br>420 psi (23 °C) | 180 °F (82 °C)<br>at 105 psi (82<br>°C) | 1.57 |
| 2-1/2" x 1-1/2" CPVC 80 Reducing Tee (SxSxS),<br>Bushed | 9801291FB | 1.408 | 1.768 | 1.768 | Socket<br>2-1/2" | Socket<br>2-1/2" | Socket<br>1-1/2" | 73 °F (23 °C) at<br>420 psi (23 °C) | 180 °F (82 °C)<br>at 105 psi (82<br>°C) | 1.53 |
| 2-1/2" x 2" CPVC 80 Reducing Tee (SxSxS)                | 9801292   | 1.509 | 1.759 | 1.759 | Socket<br>2-1/2" | Socket<br>2-1/2" | Socket<br>2"     | 73 °F (23 °C) at<br>420 psi (23 °C) | 180 °F (82 °C)<br>at 105 psi (82<br>°C) | 1.3  |
| 3" x 1/2" CPVC 80 Reducing Tee (SxSxS),<br>Bushed       | 9801333FB | 0.903 | 1.894 | 1.894 | Socket<br>3"     | Socket<br>3"     | Socket<br>1/2"   | 73 °F (23 °C) at<br>370 psi (23 °C) | 180 °F (82 °C)<br>at 90 psi (82<br>°C)  | 2.01 |
| 3" x 3/4" CPVC 80 Reducing Tee (SxSxS),<br>Bushed       | 9801334FB | 1.022 | 1.894 | 1.894 | Socket<br>3"     | Socket<br>3"     | Socket<br>3/4"   | 73 °F (23 °C) at<br>370 psi (23 °C) | 180 °F (82 °C)<br>at 90 psi (82<br>°C)  | 1.97 |
| 3" x 1" CPVC 80 Reducing Tee (SxSxS), Bushed            | 9801335FB | 1.143 | 1.894 | 1.894 | Socket<br>3"     | Socket<br>3"     | Socket<br>1"     | 73 °F (23 °C) at<br>370 psi (23 °C) | 180 °F (82 °C)<br>at 90 psi (82<br>°C)  | 1.97 |
| 3" x 1-1/4" CPVC 80 Reducing Tee (SxSxS),<br>Bushed     | 9801336FB | 1.27  | 1.894 | 1.894 | Socket<br>3"     | Socket<br>3"     | Socket<br>1-1/4" | 73 °F (23 °C) at<br>370 psi (23 °C) | 180 °F (82 °C)<br>at 90 psi (82<br>°C)  | 1.95 |
| 3" x 1-1/2" CPVC 80 Reducing Tee (SxSxS),<br>Bushed     | 9801337FB | 1.408 | 1.894 | 1.894 | Socket<br>3"     | Socket<br>3"     | Socket<br>1-1/2" | 73 °F (23 °C) at<br>370 psi (23 °C) | 180 °F (82 °C)<br>at 90 psi (82<br>°C)  | 1.76 |
| 3" x 2" CPVC 80 Reducing Tee (SxSxS)                    | 9801338   | 1.509 | 1.89  | 1.89  | Socket<br>3"     | Socket<br>3"     | Socket<br>2"     | 73 °F (23 °C) at<br>370 psi (23 °C) | 180 °F (82 °C)<br>at 90 psi (82<br>°C)  | 1.73 |
| 3" x 2-1/2" CPVC 80 Reducing Tee (SxSxS),<br>Bushed     | 9801339FB | 1.894 | 1.915 | 1.915 | Socket<br>3"     | Socket<br>3"     | Socket<br>2-1/2" | 73 °F (23 °C) at<br>370 psi (23 °C) | 180 °F (82 °C)<br>at 90 psi (82<br>°C)  | 1.96 |
| 4" x 1/2" CPVC 80 Reducing Tee (SxSxS),<br>Bushed       | 9801415FB | 0.903 | 2.257 | 2.257 | Socket<br>4"     | Socket<br>4"     | Socket<br>1/2"   | 73 °F (23 °C) at<br>320 psi (23 °C) | 180 °F (82 °C)<br>at 80 psi (82<br>°C)  | 5.73 |
| 4" x 3/4" CPVC 80 Reducing Tee (SxSxS),<br>Bushed       | 9801416FB | 1.022 | 2.257 | 2.257 | Socket<br>4"     | Socket<br>4"     | Socket<br>3/4"   | 73 °F (23 °C) at<br>320 psi (23 °C) | 180 °F (82 °C)<br>at 80 psi (82<br>°C)  | 5.74 |
| 4" x 1" CPVC 80 Reducing Tee (SxSxS), Bushed            | 9801417FB | 1.13  | 2.27  | 2.27  | Socket<br>4"     | Socket<br>4"     | Socket<br>1"     | 73 °F (23 °C) at<br>320 psi (23 °C) | 180 °F (82 °C)<br>at 80 psi (82<br>°C)  | 5.69 |
| 4" x 1-1/4" CPVC 80 Reducing Tee (SxSxS),<br>Bushed     | 9801418FB | 1.27  | 2.257 | 2.257 | Socket<br>4"     | Socket<br>4"     | Socket<br>1-1/4" | 73 °F (23 °C) at<br>320 psi (23 °C) | 180 °F (82 °C)<br>at 80 psi (82<br>°C)  | 5.72 |
| 4" x 1-1/2" CPVC 80 Reducing Tee (SxSxS),<br>Bushed     | 9801419FB | 1.408 | 2.257 | 2.257 | Socket<br>4"     | Socket<br>4"     | Socket<br>1-1/2" | 73 °F (23 °C) at<br>320 psi (23 °C) | 180 °F (82 °C)<br>at 80 psi (82<br>°C)  | 5.72 |

|  |           |       |       |       |           |           |               |                                  |                                  |       | °C) |
|--|-----------|-------|-------|-------|-----------|-----------|---------------|----------------------------------|----------------------------------|-------|-----|
| 4" x 2" CPVC 80 Reducing Tee (SxSxS)                     | 9801420   | 1.509 | 2.27  | 2.27  | Socket 4" | Socket 4" | Socket 2"     | 73 °F (23 °C) at 320 psi (23 °C) | 180 °F (82 °C) at 80 psi (82 °C) | 2.48  |     |
| 4" x 2-1/2" CPVC 80 Reducing Tee (SxSxS), Bushed         | 9801421FB | 1.894 | 2.29  | 2.29  | Socket 4" | Socket 4" | Socket 2-1/2" | 73 °F (23 °C) at 320 psi (23 °C) | 180 °F (82 °C) at 80 psi (82 °C) | 5.72  |     |
| 4" x 3" CPVC 80 Reducing Tee (SxSxS)                     | 9801422   | 1.89  | 2.27  | 2.27  | Socket 4" | Socket 4" | Socket 3"     | 73 °F (23 °C) at 320 psi (23 °C) | 180 °F (82 °C) at 80 psi (82 °C) | 3.06  |     |
| 6" x 1/2" CPVC 80 Reducing Tee (SxSxS), Bushed           | 9801523FB | 0.903 | 3.067 | 3.067 | Socket 6" | Socket 6" | Socket 1/2"   | 73 °F (23 °C) at 280 psi (23 °C) | 180 °F (82 °C) at 70 psi (82 °C) | 12.97 |     |
| 6" x 3/4" CPVC 80 Reducing Tee (SxSxS), Bushed           | 9801524FB | 1.022 | 3.067 | 3.067 | Socket 6" | Socket 6" | Socket 3/4"   | 73 °F (23 °C) at 280 psi (23 °C) | 180 °F (82 °C) at 70 psi (82 °C) | 12.98 |     |
| 6" x 1" CPVC 80 Reducing Tee (SxSxS), Bushed             | 9801525FB | 1.143 | 3.067 | 3.067 | Socket 6" | Socket 6" | Socket 1"     | 73 °F (23 °C) at 280 psi (23 °C) | 180 °F (82 °C) at 70 psi (82 °C) | 12.08 |     |
| 6" x 1-1/4" CPVC 80 Reducing Tee (SxSxS), Bushed         | 9801526FB | 1.27  | 3.067 | 3.067 | Socket 6" | Socket 6" | Socket 1-1/4" | 73 °F (23 °C) at 280 psi (23 °C) | 180 °F (82 °C) at 70 psi (82 °C) | 12.06 |     |
| 6" x 1-1/2" CPVC 80 Reducing Tee (SxSxS), Bushed         | 9801527FB | 1.408 | 3.067 | 3.067 | Socket 6" | Socket 6" | Socket 1-1/2" | 73 °F (23 °C) at 280 psi (23 °C) | 180 °F (82 °C) at 70 psi (82 °C) | 12.92 |     |
| 6" x 2" CPVC 80 Reducing Tee (SxSxS)                     | 9801528   | 1.51  | 3.02  | 3.02  | Socket 6" | Socket 6" | Socket 2"     | 73 °F (23 °C) at 280 psi (23 °C) | 180 °F (82 °C) at 70 psi (82 °C) | 6.74  |     |
| 6" x 2-1/2" CPVC 80 Reducing Tee (SxSxS), Bushed, 2 Step | 9801529FB | 1.894 | 3.067 | 3.067 | Socket 6" | Socket 6" | Socket 2-1/2" | 73 °F (23 °C) at 280 psi (23 °C) | 180 °F (82 °C) at 70 psi (82 °C) | 12.02 |     |
| 6" x 3" CPVC 80 Reducing Tee (SxSxS), Bushed             | 9801530FB | 1.966 | 3.067 | 3.067 | Socket 6" | Socket 6" | Socket 3"     | 73 °F (23 °C) at 280 psi (23 °C) | 180 °F (82 °C) at 70 psi (82 °C) | 12.67 |     |
| 6" x 4" CPVC 80 Reducing Tee (SxSxS)                     | 9801532   | 2.27  | 3.02  | 3.02  | Socket 6" | Socket 6" | Socket 4"     | 73 °F (23 °C) at 280 psi (23 °C) | 180 °F (82 °C) at 70 psi (82 °C) | 7.22  |     |
| 8" x 3/4" CPVC 80 Reducing Tee (SxSxS), Bushed, 3 Step   | 9801574FB | 1.008 | 4.062 | 4.062 | Socket 8" | Socket 8" | Socket 3/4"   | 73 °F (23 °C) at 250 psi (23 °C) | 180 °F (82 °C) at 60 psi (82 °C) | 27    |     |
| 8" x 1" CPVC 80 Reducing Tee (SxSxS), Bushed, 2 Step     | 9801575FB | 1.13  | 4.062 | 4.062 | Socket 8" | Socket 8" | Socket 1"     | 73 °F (23 °C) at 250 psi (23 °C) | 180 °F (82 °C) at 60 psi (82 °C) | 27    |     |
| 8" x 1-1/2" CPVC 80 Reducing Tee (SxSxS), Bushed, 2 Step | 9801577FB | 1.486 | 4.062 | 4.062 | Socket 8" | Socket 8" | Socket 1-1/2" | 73 °F (23 °C) at 250 psi (23 °C) | 180 °F (82 °C) at 60 psi (82 °C) | 27    |     |
| 8" x 2" CPVC 80 Reducing Tee (SxSxS), Bushed, 2 Step     | 9801578FB | 1.562 | 4.062 | 4.062 | Socket 8" | Socket 8" | Socket 2"     | 73 °F (23 °C) at 250 psi (23 °C) | 180 °F (82 °C) at 60 psi (82 °C) | 27    |     |
| 8" x 2-1/2" CPVC 80 Reducing Tee (SxSxS), Bushed, 2 Step | 9801579FB | 1.828 | 4.062 | 4.062 | Socket 8" | Socket 8" | Socket 2-1/2" | 73 °F (23 °C) at 250 psi (23 °C) | 180 °F (82 °C) at 60 psi (82 °C) | 27    |     |
| 8" x 3" CPVC 80 Reducing Tee (SxSxS), Bushed             | 9801580FB | 1.917 | 4.062 | 4.062 | Socket 8" | Socket 8" | Socket 3"     | 73 °F (23 °C) at 250 psi (23 °C) | 180 °F (82 °C) at 60 psi (82 °C) | 27    |     |
| 8" x 4" CPVC 80 Reducing Tee (SxSxS), Bushed             | 9801582FB | 2.246 | 4.062 | 4.062 | Socket 8" | Socket 8" | Socket 4"     | 73 °F (23 °C) at 250 psi (23 °C) | 180 °F (82 °C) at 60 psi (82 °C) | 25.22 |     |
| 8" x 6" CPVC 80 Reducing Tee (SxSxS)                     | 9801585   | 3.094 | 4.094 | 4.094 | Socket 8" | Socket 8" | Socket 6"     | 73 °F (23 °C) at 250 psi (23 °C) | 180 °F (82 °C) at 60 psi (82 °C) | 17.32 |     |

| Part name   | Part no. | Codes                        | Standards                             | Listings             |
|---|----------|------------------------------|---------------------------------------|----------------------|
| Accesorios ChlorFIT T reductora   | All      | UPC IBC IRC IPC UMC NSPC IMC | ASTM F439 NSF/ANSI/CAN 61 NSF/ANSI 14 | ULC NSFpw-G U.P.Code |
| In addition, the following parts have additional codes, standards, or listings: |          |                              |                                       |                      |
| 3/4" x 1/2" CPVC 80 Reducing Tee (SxSxS)  | 9801101  |                              |                                       | ICC-ES-PMG           |
| 1" x 1/2" CPVC 80 Reducing Tee (SxSxS)  | 9801130  |                              |                                       | ICC-ES-PMG           |
| 1" x 3/4" CPVC 80 Reducing Tee (SxSxS)  | 9801131  |                              |                                       | ICC-ES-PMG           |

|  |           |            |
|--|-----------|------------|
| 1-1/4" x 1/2" CPVC 80 Reducing Tee (SxSxS), Bushed   | 9801166FB | ICC-ES-PMG |
| 1-1/4" x 3/4" CPVC 80 Reducing Tee (SxSxS), Bushed   | 9801167FB | ICC-ES-PMG |
| 1-1/4" x 1" CPVC 80 Reducing Tee (SxSxS)             | 9801168   | ICC-ES-PMG |
| 1-1/2" x 1/2" CPVC 80 Reducing Tee (SxSxS)           | 9801209   | ICC-ES-PMG |
| 1-1/2" x 3/4" CPVC 80 Reducing Tee (SxSxS)           | 9801210   | ICC-ES-PMG |
| 1-1/2" x 1" CPVC 80 Reducing Tee (SxSxS)             | 9801211   | ICC-ES-PMG |
| 1-1/2" x 1-1/4" CPVC 80 Reducing Tee (SxSxS), Bushed | 9801212FB | ICC-ES-PMG |
| 2" x 1/2" CPVC 80 Reducing Tee (SxSxS)               | 9801247   | ICC-ES-PMG |
| 2" x 3/4" CPVC 80 Reducing Tee (SxSxS)               | 9801248   | ICC-ES-PMG |
| 2" x 1" CPVC 80 Reducing Tee (SxSxS)                 | 9801249   | ICC-ES-PMG |
| 2" x 1-1/4" CPVC 80 Reducing Tee (SxSxS), Bushed     | 9801250FB | ICC-ES-PMG |
| 2" x 1-1/2" CPVC 80 Reducing Tee (SxSxS)             | 9801251   | ICC-ES-PMG |
| 2-1/2" x 1/2" CPVC 80 Reducing Tee (SxSxS), Bushed   | 9801287FB | ICC-ES-PMG |
| 2-1/2" x 3/4" CPVC 80 Reducing Tee (SxSxS), Bushed   | 9801288FB | ICC-ES-PMG |
| 2-1/2" x 1" CPVC 80 Reducing Tee (SxSxS), Bushed     | 9801289FB | ICC-ES-PMG |
| 2-1/2" x 1-1/4" CPVC 80 Reducing Tee (SxSxS), Bushed | 9801290FB | ICC-ES-PMG |
| 2-1/2" x 1-1/2" CPVC 80 Reducing Tee (SxSxS), Bushed | 9801291FB | ICC-ES-PMG |
| 2-1/2" x 2" CPVC 80 Reducing Tee (SxSxS)             | 9801292   | ICC-ES-PMG |
| 3" x 1/2" CPVC 80 Reducing Tee (SxSxS), Bushed       | 9801333FB | ICC-ES-PMG |
| 3" x 3/4" CPVC 80 Reducing Tee (SxSxS), Bushed       | 9801334FB | ICC-ES-PMG |
| 3" x 1" CPVC 80 Reducing Tee (SxSxS), Bushed         | 9801335FB | ICC-ES-PMG |
| 3" x 1-1/4" CPVC 80 Reducing Tee (SxSxS), Bushed     | 9801336FB | ICC-ES-PMG |
| 3" x 1-1/2" CPVC 80 Reducing Tee (SxSxS), Bushed     | 9801337FB | ICC-ES-PMG |
| 3" x 2" CPVC 80 Reducing Tee (SxSxS)                 | 9801338   | ICC-ES-PMG |
| 3" x 2-1/2" CPVC 80 Reducing Tee (SxSxS), Bushed     | 9801339FB | ICC-ES-PMG |
| 4" x 1/2" CPVC 80 Reducing Tee (SxSxS), Bushed       | 9801415FB | ICC-ES-PMG |
| 4" x 3/4" CPVC 80 Reducing Tee (SxSxS), Bushed       | 9801416FB | ICC-ES-PMG |
| 4" x 1" CPVC 80 Reducing Tee (SxSxS), Bushed         | 9801417FB | ICC-ES-PMG |
| 4" x 1-1/4" CPVC 80 Reducing Tee (SxSxS), Bushed     | 9801418FB | ICC-ES-PMG |
| 4" x 1-1/2" CPVC 80 Reducing Tee (SxSxS), Bushed     | 9801419FB | ICC-ES-PMG |
| 4" x 2" CPVC 80 Reducing Tee (SxSxS)                 | 9801420   | ICC-ES-PMG |
| 4" x 2-1/2" CPVC 80 Reducing Tee (SxSxS), Bushed     | 9801421FB | ICC-ES-PMG |
| 4" x 3" CPVC 80 Reducing Tee (SxSxS)                 | 9801422   | ICC-ES-PMG |
| 6" x 1/2" CPVC 80 Reducing Tee (SxSxS), Bushed       | 9801523FB | ICC-ES-PMG |
| 6" x 3/4" CPVC 80 Reducing Tee                       | 9801524FB | ICC-ES-PMG |

|   |           |            |
|---|-----------|------------|
| (SxSxS), Bushed   |           |            |
| 6" x 1" CPVC 80 Reducing Tee<br>(SxSxS), Bushed             | 9801525FB | ICC-ES-PMG |
| 6" x 1-1/4" CPVC 80 Reducing Tee<br>(SxSxS), Bushed         | 9801526FB | ICC-ES-PMG |
| 6" x 1-1/2" CPVC 80 Reducing Tee<br>(SxSxS), Bushed         | 9801527FB | ICC-ES-PMG |
| 6" x 2" CPVC 80 Reducing Tee<br>(SxSxS)                     | 9801528   | ICC-ES-PMG |
| 6" x 2-1/2" CPVC 80 Reducing Tee<br>(SxSxS), Bushed, 2 Step | 9801529FB | ICC-ES-PMG |
| 6" x 3" CPVC 80 Reducing Tee<br>(SxSxS), Bushed             | 9801530FB | ICC-ES-PMG |
| 6" x 4" CPVC 80 Reducing Tee<br>(SxSxS)                     | 9801532   | ICC-ES-PMG |
| 8" x 3/4" CPVC 80 Reducing Tee<br>(SxSxS), Bushed, 3 Step   | 9801574FB | ICC-ES-PMG |
| 8" x 6" CPVC 80 Reducing Tee<br>(SxSxS)                     | 9801585   | ICC-ES-PMG |

| Installation  | Related applications                   |
|---|--|
| Make connections via solvent welding using primer and solvent cement designed specifically for Schedule 80 CPVC pipe and fittings. Refer to the Uponor ChlorFIT Manual or Uponor ChlorFIT Solvent Welding Instruction Sheet for complete details. | Agua doméstica<br>Tuberías hidráulicas |

| Footnotes | Contact information   |   |
|-----------|---|---|
| -         | Uponor Inc.<br>5925 148th Street West<br>Apple Valley, MN 55124<br>T 800.321.4739<br>F 952.891.2008 | Uponor Ltd.<br>6510 Kennedy Road<br>Mississauga, ON L5T 2X4<br>T 888.594.7726<br>F 800.638.9517 |