

Accesorios ChlorFIT T reductora

Project Information

Job name:	Location:
Engineer:	Fecha de envío:
Contractor:	Presentada por:
Manufacturer's representative:	Approved by:

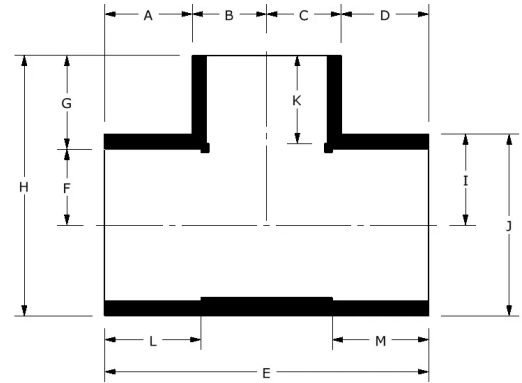
Technical data

Material CPVC

Product information and application use

Utilice las camisetas de CPVC Corzan® ChlorFIT® Schedule 80 de Uponor en sistemas de agua potable fría y caliente, así como en aplicaciones de calefacción y refrigeración hidrónicas.

Corzan® es una marca comercial registrada de Lubrizol Advanced Materials, Inc.



Part name	Part no.	A [inch]	B [inch]	C [inch]	D [inch]	E [inch]	F [inch]	G [inch]	H [inch]	I [inch]	J [inch]
3/4" x 1/2" CPVC 80 Reducing Tee (SxSxS)	9801101	1.03	0.58	0.58	1.03	3.22	0.525	1.085	2.328	0.719	1.437
1" x 1/2" CPVC 80 Reducing Tee (SxSxS)	9801130	1.28	0.58	0.58	1.28	3.72	0.657	0.972	2.485	0.855	1.71
1" x 3/4" CPVC 80 Reducing Tee (SxSxS)	9801131	1.165	0.695	0.695	1.165	3.72	0.657	1.202	2.715	0.855	1.71
1-1/4" x 1/2" CPVC 80 Reducing Tee (SxSxS), Bushed	9801166FB	1.138	0.854	0.854	1.138	3.985	0.83	1.52	3.393	1.043	2.087
1-1/4" x 3/4" CPVC 80 Reducing Tee (SxSxS), Bushed	9801167FB	1.138	0.854	0.854	1.138	3.985	0.83	1.517	3.391	1.043	2.087
1-1/4" x 1" CPVC 80 Reducing Tee (SxSxS)	9801168	1.122	0.855	0.855	1.122	3.954	0.83	1.21	3.08	1.04	2.08
1-1/2" x 1/2" CPVC 80 Reducing Tee (SxSxS)	9801209	1.334	0.58	0.58	1.334	3.828	0.95	0.963	3.08	1.167	2.335
1-1/2" x 3/4" CPVC 80 Reducing Tee (SxSxS)	9801210	1.281	0.695	0.695	1.281	3.952	0.95	1.09	3.207	1.167	2.335
1-1/2" x 1" CPVC 80 Reducing Tee (SxSxS)	9801211	1.246	0.855	0.855	1.246	4.202	0.95	1.21	3.328	1.167	2.335
1-1/2" x 1-1/4" CPVC 80 Reducing Tee (SxSxS), Bushed	9801212FB	1.27	1.169	1.169	1.27	4.878	0.95	1.793	3.912	1.169	2.338
2" x 1/2" CPVC 80 Reducing Tee (SxSxS)	9801247	1.46	0.58	0.58	1.46	4.08	1.187	0.972	3.585	1.425	2.85
2" x 3/4" CPVC 80 Reducing Tee (SxSxS)	9801248	1.407	0.695	0.695	1.407	4.204	1.187	1.102	3.714	1.425	2.85
2" x 1" CPVC 80 Reducing Tee (SxSxS)	9801249	1.372	0.855	0.855	1.372	4.454	1.187	1.222	3.835	1.425	2.85
2" x 1-1/4" CPVC 80 Reducing Tee (SxSxS), Bushed	9801250FB	1.366	1.444	1.444	1.366	5.62	1.187	1.919	4.55	1.444	2.888
2" x 1-1/2" CPVC 80 Reducing Tee (SxSxS)	9801251	1.372	1.167	1.167	1.372	5.08	1.187	1.472	4.085	1.425	2.85
2-1/2" x 1/2" CPVC 80 Reducing Tee (SxSxS), Bushed	9801287FB	1.554	1.496	1.496	1.554	6.1	1.437	1.91	5.091	1.743	3.487
2-1/2" x 3/4" CPVC 80 Reducing Tee (SxSxS), Bushed	9801288FB	1.554	1.496	1.496	1.554	6.1	1.437	1.915	5.096	1.743	3.487
2-1/2" x 1" CPVC 80 Reducing Tee (SxSxS), Bushed	9801289FB	1.554	1.496	1.496	1.554	6.1	1.437	1.924	5.105	1.743	3.487
2-1/2" x 1-1/4" CPVC 80 Reducing Tee (SxSxS), Bushed	9801290FB	1.554	1.496	1.496	1.554	6.1	1.437	1.904	5.085	1.743	3.487
2-1/2" x 1-1/2" CPVC 80 Reducing Tee (SxSxS), Bushed	9801291FB	1.554	1.496	1.496	1.554	6.1	1.437	1.91	5.091	1.743	3.487
2-1/2" x 2" CPVC 80 Reducing Tee (SxSxS)	9801292	1.54	1.5	1.5	1.54	6.08	1.437	1.602	4.785	1.745	3.49
3" x 1/2" CPVC 80 Reducing Tee (SxSxS), Bushed	9801333FB	1.766	1.43	1.43	1.766	6.392	1.75	1.926	5.758	2.081	4.163
3" x 3/4" CPVC 80 Reducing Tee (SxSxS), Bushed	9801334FB	1.766	1.43	1.43	1.766	6.392	1.75	1.932	5.763	2.081	4.163
3" x 1" CPVC 80 Reducing Tee (SxSxS), Bushed	9801335FB	1.766	1.43	1.43	1.766	6.392	1.75	1.941	5.772	2.081	4.163
3" x 1-1/4" CPVC 80 Reducing Tee (SxSxS), Bushed	9801336FB	1.766	1.43	1.43	1.766	6.392	1.75	1.92	5.752	2.081	4.163
3" x 1-1/2" CPVC 80 Reducing Tee (SxSxS), Bushed	9801337FB	1.766	1.43	1.43	1.766	6.392	1.75	1.926	5.758	2.081	4.163

3" x 2" CPVC 80 Reducing Tee (SxSxS)	9801338	1.746	1.425	1.425	1.746	6.342	1.75	1.6	5.425	2.075	4.15
3" x 2-1/2" CPVC 80 Reducing Tee (SxSxS), Bushed	9801339FB	1.643	2.081	2.081	1.643	7.45	1.75	2.315	6.146	2.081	4.163
4" x 1/2" CPVC 80 Reducing Tee (SxSxS), Bushed	9801415FB	2.076	1.446	1.446	2.076	7.046	2.25	1.935	6.796	2.611	5.221
4" x 3/4" CPVC 80 Reducing Tee (SxSxS), Bushed	9801416FB	2.076	1.446	1.446	2.076	7.046	2.25	1.941	6.802	2.611	5.221
4" x 1" CPVC 80 Reducing Tee (SxSxS), Bushed	9801417FB	2.106	1.445	1.445	2.106	7.102	2.259	1.891	6.765	2.615	5.23
4" x 1-1/4" CPVC 80 Reducing Tee (SxSxS), Bushed	9801418FB	2.076	1.446	1.446	2.076	7.046	2.25	1.93	6.79	2.611	5.221
4" x 1-1/2" CPVC 80 Reducing Tee (SxSxS), Bushed	9801419FB	2.076	1.446	1.446	2.076	7.046	2.25	1.935	6.796	2.611	5.221
4" x 2" CPVC 80 Reducing Tee (SxSxS)	9801420	2.106	1.445	1.445	2.106	7.102	2.25	1.62	6.485	2.615	5.23
4" x 2-1/2" CPVC 80 Reducing Tee (SxSxS), Bushed	9801421FB	2.056	2.083	2.083	2.056	8.278	2.25	2.373	7.252	2.628	5.257
4" x 3" CPVC 80 Reducing Tee (SxSxS)	9801422	2.039	2.075	2.075	2.039	8.228	2.25	1.98	6.845	2.615	5.23
6" x 1/2" CPVC 80 Reducing Tee (SxSxS), Bushed	9801523FB	3.929	2.629	2.629	3.929	13.115	3.313	4.111	11.21	3.787	7.573
6" x 3/4" CPVC 80 Reducing Tee (SxSxS), Bushed	9801524FB	3.929	2.629	2.629	3.929	13.115	3.313	4.117	11.215	3.787	7.573
6" x 1" CPVC 80 Reducing Tee (SxSxS), Bushed	9801525FB	3.929	2.629	2.629	3.929	13.115	3.313	4.125	11.224	3.787	7.573
6" x 1-1/4" CPVC 80 Reducing Tee (SxSxS), Bushed	9801526FB	3.929	2.629	2.629	3.929	13.115	3.313	4.105	11.204	3.787	7.573
6" x 1-1/2" CPVC 80 Reducing Tee (SxSxS), Bushed	9801527FB	3.929	2.629	2.629	3.929	13.115	3.313	4.111	11.21	3.787	7.573
6" x 2" CPVC 80 Reducing Tee (SxSxS)	9801528	3.013	1.437	1.437	3.013	8.9	3.323	1.927	9.047	3.797	7.594
6" x 2-1/2" CPVC 80 Reducing Tee (SxSxS), Bushed, 2 Step	9801529FB	3.929	2.629	2.629	3.929	13.115	3.313	4.204	11.302	3.787	7.573
6" x 3" CPVC 80 Reducing Tee (SxSxS), Bushed	9801530FB	3.929	2.629	2.629	3.929	13.115	3.313	3.9	11	3.787	7.573
6" x 4" CPVC 80 Reducing Tee (SxSxS)	9801532	2.725	2.635	2.635	2.725	10.72	3.313	2.487	9.59	3.79	7.58
8" x 3/4" CPVC 80 Reducing Tee (SxSxS), Bushed, 3 Step	9801574FB	3.819	3.794	3.794	3.819	15.226	4.313	4.577	13.759	4.869	9.738
8" x 1" CPVC 80 Reducing Tee (SxSxS), Bushed, 2 Step	9801575FB	3.819	3.794	3.794	3.819	15.226	4.313	4.312	13.493	4.869	9.738
8" x 1-1/2" CPVC 80 Reducing Tee (SxSxS), Bushed, 2 Step	9801577FB	3.819	3.794	3.794	3.819	15.226	4.313	4.315	13.496	4.869	9.738
8" x 2" CPVC 80 Reducing Tee (SxSxS), Bushed, 2 Step	9801578FB	3.819	3.794	3.794	3.819	15.226	4.313	4.24	13.422	4.869	9.738
8" x 2-1/2" CPVC 80 Reducing Tee (SxSxS), Bushed, 2 Step	9801579FB	3.819	3.794	3.794	3.819	15.226	4.313	4.162	13.343	4.869	9.738
8" x 3" CPVC 80 Reducing Tee (SxSxS), Bushed	9801580FB	3.819	3.794	3.794	3.819	15.226	4.313	3.867	13.048	4.869	9.738
8" x 4" CPVC 80 Reducing Tee (SxSxS), Bushed	9801582FB	3.819	3.794	3.794	3.819	15.226	4.313	3.879	13.061	4.869	9.738
8" x 6" CPVC 80 Reducing Tee (SxSxS)	9801585	4.789	3.82	3.82	4.789	17.218	4.313	3.374	12.528	4.843	9.685

Part name	Part no.	K [inch]	L [inch]	M [inch]	End Type 1	End Type 2	End Type 3	Operating Temperature 1 [°F]	Operating Temperature 2 [°F]	Weight per UOM [lbs/UOM]
3/4" x 1/2" CPVC 80 Reducing Tee (SxSxS)	9801101	0.882	1.008	1.008	Socket 3/4"	Socket 3/4"	Socket 1/2"	73 °F (23 °C) at 690 psi (23 °C)	180 °F (82 °C) at 170 psi (82 °C)	0.25
1" x 1/2" CPVC 80 Reducing Tee (SxSxS)	9801130	0.882	1.133	1.133	Socket 1"	Socket 1"	Socket 1/2"	73 °F (23 °C) at 630 psi (23 °C)	180 °F (82 °C) at 155 psi (82 °C)	0.33
1" x 3/4" CPVC 80 Reducing Tee (SxSxS)	9801131	1.008	1.133	1.133	Socket 1"	Socket 1"	Socket 3/4"	73 °F (23 °C) at 630 psi (23 °C)	180 °F (82 °C) at 155 psi (82 °C)	0.35
1-1/4" x 1/2" CPVC 80 Reducing Tee (SxSxS), Bushed	9801166FB	0.883	1.265	1.265	Socket 1-1/4"	Socket 1-1/4"	Socket 1/2"	73 °F (23 °C) at 520 psi (23 °C)	180 °F (82 °C) at 130 psi (82 °C)	0.59
1-1/4" x 3/4" CPVC 80 Reducing Tee (SxSxS), Bushed	9801167FB	1.022	1.265	1.265	Socket 1-1/4"	Socket 1-1/4"	Socket 3/4"	73 °F (23 °C) at 520 psi (23 °C)	180 °F (82 °C) at 130 psi (82 °C)	0.57
1-1/4" x 1" CPVC 80 Reducing Tee (SxSxS)	9801168	1.133	1.258	1.258	Socket 1-1/4"	Socket 1-1/4"	Socket 1"	73 °F (23 °C) at 520 psi (23 °C)	180 °F (82 °C) at 130 psi (82 °C)	0.47
1-1/2" x 1/2" CPVC 80 Reducing Tee (SxSxS)	9801209	0.882	1.383	1.383	Socket 1-1/2"	Socket 1-1/2"	Socket 1/2"	73 °F (23 °C) at 470 psi (23 °C)	180 °F (82 °C) at 115 psi (82 °C)	0.49
1-1/2" x 3/4" CPVC 80 Reducing Tee (SxSxS)	9801210	1.008	1.383	1.383	Socket 1-1/2"	Socket 1-1/2"	Socket 3/4"	73 °F (23 °C) at 470 psi (23 °C)	180 °F (82 °C) at 115 psi (82 °C)	1.12

1-1/2" x 1" CPVC 80 Reducing Tee (SxSxS)	9801211	1.133	1.383	1.383	Socket 1-1/2"	Socket 1-1/2"	Socket 1"	73 °F (23 °C) at 470 psi (23 °C)	180 °F (82 °C) at 115 psi (82 °C)	0.83
1-1/2" x 1-1/4" CPVC 80 Reducing Tee (SxSxS), Bushed	9801212FB	1.272	1.404	1.404	Socket 1-1/2"	Socket 1-1/2"	Socket 1-1/4"	73 °F (23 °C) at 470 psi (23 °C)	180 °F (82 °C) at 115 psi (82 °C)	0.82
2" x 1/2" CPVC 80 Reducing Tee (SxSxS)	9801247	0.882	1.509	1.509	Socket 2"	Socket 2"	Socket 1/2"	73 °F (23 °C) at 400 psi (23 °C)	180 °F (82 °C) at 100 psi (82 °C)	0.49
2" x 3/4" CPVC 80 Reducing Tee (SxSxS)	9801248	1.008	1.509	1.509	Socket 2"	Socket 2"	Socket 3/4"	73 °F (23 °C) at 400 psi (23 °C)	180 °F (82 °C) at 100 psi (82 °C)	1.22
2" x 1" CPVC 80 Reducing Tee (SxSxS)	9801249	1.133	1.509	1.509	Socket 2"	Socket 2"	Socket 1"	73 °F (23 °C) at 400 psi (23 °C)	180 °F (82 °C) at 100 psi (82 °C)	0.97
2" x 1-1/4" CPVC 80 Reducing Tee (SxSxS), Bushed	9801250FB	1.27	1.513	1.513	Socket 2"	Socket 2"	Socket 1-1/4"	73 °F (23 °C) at 400 psi (23 °C)	180 °F (82 °C) at 100 psi (82 °C)	1.19
2" x 1-1/2" CPVC 80 Reducing Tee (SxSxS)	9801251	1.383	1.509	1.509	Socket 2"	Socket 2"	Socket 1-1/2"	73 °F (23 °C) at 400 psi (23 °C)	180 °F (82 °C) at 100 psi (82 °C)	1.07
2-1/2" x 1/2" CPVC 80 Reducing Tee (SxSxS), Bushed	9801287FB	0.903	1.768	1.768	Socket 2-1/2"	Socket 2-1/2"	Socket 1/2"	73 °F (23 °C) at 420 psi (23 °C)	180 °F (82 °C) at 105 psi (82 °C)	1.58
2-1/2" x 3/4" CPVC 80 Reducing Tee (SxSxS), Bushed	9801288FB	1.022	1.768	1.768	Socket 2-1/2"	Socket 2-1/2"	Socket 3/4"	73 °F (23 °C) at 420 psi (23 °C)	180 °F (82 °C) at 105 psi (82 °C)	1.59
2-1/2" x 1" CPVC 80 Reducing Tee (SxSxS), Bushed	9801289FB	1.143	1.768	1.768	Socket 2-1/2"	Socket 2-1/2"	Socket 1"	73 °F (23 °C) at 420 psi (23 °C)	180 °F (82 °C) at 105 psi (82 °C)	1.59
2-1/2" x 1-1/4" CPVC 80 Reducing Tee (SxSxS), Bushed	9801290FB	1.27	1.768	1.768	Socket 2-1/2"	Socket 2-1/2"	Socket 1-1/4"	73 °F (23 °C) at 420 psi (23 °C)	180 °F (82 °C) at 105 psi (82 °C)	1.57
2-1/2" x 1-1/2" CPVC 80 Reducing Tee (SxSxS), Bushed	9801291FB	1.408	1.768	1.768	Socket 2-1/2"	Socket 2-1/2"	Socket 1-1/2"	73 °F (23 °C) at 420 psi (23 °C)	180 °F (82 °C) at 105 psi (82 °C)	1.53
2-1/2" x 2" CPVC 80 Reducing Tee (SxSxS)	9801292	1.509	1.759	1.759	Socket 2-1/2"	Socket 2-1/2"	Socket 2"	73 °F (23 °C) at 420 psi (23 °C)	180 °F (82 °C) at 105 psi (82 °C)	1.3
3" x 1/2" CPVC 80 Reducing Tee (SxSxS), Bushed	9801333FB	0.903	1.894	1.894	Socket 3"	Socket 3"	Socket 1/2"	73 °F (23 °C) at 370 psi (23 °C)	180 °F (82 °C) at 90 psi (82 °C)	2.01
3" x 3/4" CPVC 80 Reducing Tee (SxSxS), Bushed	9801334FB	1.022	1.894	1.894	Socket 3"	Socket 3"	Socket 3/4"	73 °F (23 °C) at 370 psi (23 °C)	180 °F (82 °C) at 90 psi (82 °C)	1.97
3" x 1" CPVC 80 Reducing Tee (SxSxS), Bushed	9801335FB	1.143	1.894	1.894	Socket 3"	Socket 3"	Socket 1"	73 °F (23 °C) at 370 psi (23 °C)	180 °F (82 °C) at 90 psi (82 °C)	1.97
3" x 1-1/4" CPVC 80 Reducing Tee (SxSxS), Bushed	9801336FB	1.27	1.894	1.894	Socket 3"	Socket 3"	Socket 1-1/4"	73 °F (23 °C) at 370 psi (23 °C)	180 °F (82 °C) at 90 psi (82 °C)	1.95
3" x 1-1/2" CPVC 80 Reducing Tee (SxSxS), Bushed	9801337FB	1.408	1.894	1.894	Socket 3"	Socket 3"	Socket 1-1/2"	73 °F (23 °C) at 370 psi (23 °C)	180 °F (82 °C) at 90 psi (82 °C)	1.76
3" x 2" CPVC 80 Reducing Tee (SxSxS)	9801338	1.509	1.89	1.89	Socket 3"	Socket 3"	Socket 2"	73 °F (23 °C) at 370 psi (23 °C)	180 °F (82 °C) at 90 psi (82 °C)	1.73
3" x 2-1/2" CPVC 80 Reducing Tee (SxSxS), Bushed	9801339FB	1.894	1.915	1.915	Socket 3"	Socket 3"	Socket 2-1/2"	73 °F (23 °C) at 370 psi (23 °C)	180 °F (82 °C) at 90 psi (82 °C)	1.96
4" x 1/2" CPVC 80 Reducing Tee (SxSxS), Bushed	9801415FB	0.903	2.257	2.257	Socket 4"	Socket 4"	Socket 1/2"	73 °F (23 °C) at 320 psi (23 °C)	180 °F (82 °C) at 80 psi (82 °C)	5.73
4" x 3/4" CPVC 80 Reducing Tee (SxSxS), Bushed	9801416FB	1.022	2.257	2.257	Socket 4"	Socket 4"	Socket 3/4"	73 °F (23 °C) at 320 psi (23 °C)	180 °F (82 °C) at 80 psi (82 °C)	5.74
4" x 1" CPVC 80 Reducing Tee (SxSxS), Bushed	9801417FB	1.13	2.27	2.27	Socket 4"	Socket 4"	Socket 1"	73 °F (23 °C) at 320 psi (23 °C)	180 °F (82 °C) at 80 psi (82 °C)	5.69
4" x 1-1/4" CPVC 80 Reducing Tee (SxSxS), Bushed	9801418FB	1.27	2.257	2.257	Socket 4"	Socket 4"	Socket 1-1/4"	73 °F (23 °C) at 320 psi (23 °C)	180 °F (82 °C) at 80 psi (82 °C)	5.72
4" x 1-1/2" CPVC 80 Reducing Tee (SxSxS), Bushed	9801419FB	1.408	2.257	2.257	Socket 4"	Socket 4"	Socket 1-1/2"	73 °F (23 °C) at 320 psi (23 °C)	180 °F (82 °C) at 80 psi (82 °C)	5.72

											°C)
4" x 2" CPVC 80 Reducing Tee (SxSxS)	9801420	1.509	2.27	2.27	Socket 4"	Socket 4"	Socket 2"	73 °F (23 °C) at 320 psi (23 °C)	180 °F (82 °C) at 80 psi (82 °C)	2.48	
4" x 2-1/2" CPVC 80 Reducing Tee (SxSxS), Bushed	9801421FB	1.894	2.29	2.29	Socket 4"	Socket 4"	Socket 2-1/2"	73 °F (23 °C) at 320 psi (23 °C)	180 °F (82 °C) at 80 psi (82 °C)	5.72	
4" x 3" CPVC 80 Reducing Tee (SxSxS)	9801422	1.89	2.27	2.27	Socket 4"	Socket 4"	Socket 3"	73 °F (23 °C) at 320 psi (23 °C)	180 °F (82 °C) at 80 psi (82 °C)	3.06	
6" x 1/2" CPVC 80 Reducing Tee (SxSxS), Bushed	9801523FB	0.903	3.067	3.067	Socket 6"	Socket 6"	Socket 1/2"	73 °F (23 °C) at 280 psi (23 °C)	180 °F (82 °C) at 70 psi (82 °C)	12.97	
6" x 3/4" CPVC 80 Reducing Tee (SxSxS), Bushed	9801524FB	1.022	3.067	3.067	Socket 6"	Socket 6"	Socket 3/4"	73 °F (23 °C) at 280 psi (23 °C)	180 °F (82 °C) at 70 psi (82 °C)	12.98	
6" x 1" CPVC 80 Reducing Tee (SxSxS), Bushed	9801525FB	1.143	3.067	3.067	Socket 6"	Socket 6"	Socket 1"	73 °F (23 °C) at 280 psi (23 °C)	180 °F (82 °C) at 70 psi (82 °C)	12.08	
6" x 1-1/4" CPVC 80 Reducing Tee (SxSxS), Bushed	9801526FB	1.27	3.067	3.067	Socket 6"	Socket 6"	Socket 1-1/4"	73 °F (23 °C) at 280 psi (23 °C)	180 °F (82 °C) at 70 psi (82 °C)	12.06	
6" x 1-1/2" CPVC 80 Reducing Tee (SxSxS), Bushed	9801527FB	1.408	3.067	3.067	Socket 6"	Socket 6"	Socket 1-1/2"	73 °F (23 °C) at 280 psi (23 °C)	180 °F (82 °C) at 70 psi (82 °C)	12.92	
6" x 2" CPVC 80 Reducing Tee (SxSxS)	9801528	1.51	3.02	3.02	Socket 6"	Socket 6"	Socket 2"	73 °F (23 °C) at 280 psi (23 °C)	180 °F (82 °C) at 70 psi (82 °C)	6.74	
6" x 2-1/2" CPVC 80 Reducing Tee (SxSxS), Bushed, 2 Step	9801529FB	1.894	3.067	3.067	Socket 6"	Socket 6"	Socket 2-1/2"	73 °F (23 °C) at 280 psi (23 °C)	180 °F (82 °C) at 70 psi (82 °C)	12.02	
6" x 3" CPVC 80 Reducing Tee (SxSxS), Bushed	9801530FB	1.966	3.067	3.067	Socket 6"	Socket 6"	Socket 3"	73 °F (23 °C) at 280 psi (23 °C)	180 °F (82 °C) at 70 psi (82 °C)	12.67	
6" x 4" CPVC 80 Reducing Tee (SxSxS)	9801532	2.27	3.02	3.02	Socket 6"	Socket 6"	Socket 4"	73 °F (23 °C) at 280 psi (23 °C)	180 °F (82 °C) at 70 psi (82 °C)	7.22	
8" x 3/4" CPVC 80 Reducing Tee (SxSxS), Bushed, 3 Step	9801574FB	1.008	4.062	4.062	Socket 8"	Socket 8"	Socket 3/4"	73 °F (23 °C) at 250 psi (23 °C)	180 °F (82 °C) at 60 psi (82 °C)	27	
8" x 1" CPVC 80 Reducing Tee (SxSxS), Bushed, 2 Step	9801575FB	1.13	4.062	4.062	Socket 8"	Socket 8"	Socket 1"	73 °F (23 °C) at 250 psi (23 °C)	180 °F (82 °C) at 60 psi (82 °C)	27	
8" x 1-1/2" CPVC 80 Reducing Tee (SxSxS), Bushed, 2 Step	9801577FB	1.486	4.062	4.062	Socket 8"	Socket 8"	Socket 1-1/2"	73 °F (23 °C) at 250 psi (23 °C)	180 °F (82 °C) at 60 psi (82 °C)	27	
8" x 2" CPVC 80 Reducing Tee (SxSxS), Bushed, 2 Step	9801578FB	1.562	4.062	4.062	Socket 8"	Socket 8"	Socket 2"	73 °F (23 °C) at 250 psi (23 °C)	180 °F (82 °C) at 60 psi (82 °C)	27	
8" x 2-1/2" CPVC 80 Reducing Tee (SxSxS), Bushed, 2 Step	9801579FB	1.828	4.062	4.062	Socket 8"	Socket 8"	Socket 2-1/2"	73 °F (23 °C) at 250 psi (23 °C)	180 °F (82 °C) at 60 psi (82 °C)	27	
8" x 3" CPVC 80 Reducing Tee (SxSxS), Bushed	9801580FB	1.917	4.062	4.062	Socket 8"	Socket 8"	Socket 3"	73 °F (23 °C) at 250 psi (23 °C)	180 °F (82 °C) at 60 psi (82 °C)	27	
8" x 4" CPVC 80 Reducing Tee (SxSxS), Bushed	9801582FB	2.246	4.062	4.062	Socket 8"	Socket 8"	Socket 4"	73 °F (23 °C) at 250 psi (23 °C)	180 °F (82 °C) at 60 psi (82 °C)	25.22	
8" x 6" CPVC 80 Reducing Tee (SxSxS)	9801585	3.094	4.094	4.094	Socket 8"	Socket 8"	Socket 6"	73 °F (23 °C) at 250 psi (23 °C)	180 °F (82 °C) at 60 psi (82 °C)	17.32	

Part name	Part no.	Codes	Standards	Listings
Accesorios ChlorFIT T reductora	All	UPC IBC IRC IPC UMC NSPC IMC	ASTM F439 NSF/ANSI/CAN 61 NSF/ANSI 14	ULC NSFpw-G U.P.Code
In addition, the following parts have additional codes, standards, or listings:				
3/4" x 1/2" CPVC 80 Reducing Tee (SxSxS)	9801101			ICC-ES-PMG
1" x 1/2" CPVC 80 Reducing Tee (SxSxS)	9801130			ICC-ES-PMG
1" x 3/4" CPVC 80 Reducing Tee (SxSxS)	9801131			ICC-ES-PMG

1-1/4" x 1/2" CPVC 80 Reducing Tee (SxSxS), Bushed	9801166FB	ICC-ES-PMG
1-1/4" x 3/4" CPVC 80 Reducing Tee (SxSxS), Bushed	9801167FB	ICC-ES-PMG
1-1/4" x 1" CPVC 80 Reducing Tee (SxSxS)	9801168	ICC-ES-PMG
1-1/2" x 1/2" CPVC 80 Reducing Tee (SxSxS)	9801209	ICC-ES-PMG
1-1/2" x 3/4" CPVC 80 Reducing Tee (SxSxS)	9801210	ICC-ES-PMG
1-1/2" x 1" CPVC 80 Reducing Tee (SxSxS)	9801211	ICC-ES-PMG
1-1/2" x 1-1/4" CPVC 80 Reducing Tee (SxSxS), Bushed	9801212FB	ICC-ES-PMG
2" x 1/2" CPVC 80 Reducing Tee (SxSxS)	9801247	ICC-ES-PMG
2" x 3/4" CPVC 80 Reducing Tee (SxSxS)	9801248	ICC-ES-PMG
2" x 1" CPVC 80 Reducing Tee (SxSxS)	9801249	ICC-ES-PMG
2" x 1-1/4" CPVC 80 Reducing Tee (SxSxS), Bushed	9801250FB	ICC-ES-PMG
2" x 1-1/2" CPVC 80 Reducing Tee (SxSxS)	9801251	ICC-ES-PMG
2-1/2" x 1/2" CPVC 80 Reducing Tee (SxSxS), Bushed	9801287FB	ICC-ES-PMG
2-1/2" x 3/4" CPVC 80 Reducing Tee (SxSxS), Bushed	9801288FB	ICC-ES-PMG
2-1/2" x 1" CPVC 80 Reducing Tee (SxSxS), Bushed	9801289FB	ICC-ES-PMG
2-1/2" x 1-1/4" CPVC 80 Reducing Tee (SxSxS), Bushed	9801290FB	ICC-ES-PMG
2-1/2" x 1-1/2" CPVC 80 Reducing Tee (SxSxS), Bushed	9801291FB	ICC-ES-PMG
2-1/2" x 2" CPVC 80 Reducing Tee (SxSxS)	9801292	ICC-ES-PMG
3" x 1/2" CPVC 80 Reducing Tee (SxSxS), Bushed	9801333FB	ICC-ES-PMG
3" x 3/4" CPVC 80 Reducing Tee (SxSxS), Bushed	9801334FB	ICC-ES-PMG
3" x 1" CPVC 80 Reducing Tee (SxSxS), Bushed	9801335FB	ICC-ES-PMG
3" x 1-1/4" CPVC 80 Reducing Tee (SxSxS), Bushed	9801336FB	ICC-ES-PMG
3" x 1-1/2" CPVC 80 Reducing Tee (SxSxS), Bushed	9801337FB	ICC-ES-PMG
3" x 2" CPVC 80 Reducing Tee (SxSxS)	9801338	ICC-ES-PMG
3" x 2-1/2" CPVC 80 Reducing Tee (SxSxS), Bushed	9801339FB	ICC-ES-PMG
4" x 1/2" CPVC 80 Reducing Tee (SxSxS), Bushed	9801415FB	ICC-ES-PMG
4" x 3/4" CPVC 80 Reducing Tee (SxSxS), Bushed	9801416FB	ICC-ES-PMG
4" x 1" CPVC 80 Reducing Tee (SxSxS), Bushed	9801417FB	ICC-ES-PMG
4" x 1-1/4" CPVC 80 Reducing Tee (SxSxS), Bushed	9801418FB	ICC-ES-PMG
4" x 1-1/2" CPVC 80 Reducing Tee (SxSxS), Bushed	9801419FB	ICC-ES-PMG
4" x 2" CPVC 80 Reducing Tee (SxSxS)	9801420	ICC-ES-PMG
4" x 2-1/2" CPVC 80 Reducing Tee (SxSxS), Bushed	9801421FB	ICC-ES-PMG
4" x 3" CPVC 80 Reducing Tee (SxSxS)	9801422	ICC-ES-PMG
6" x 1/2" CPVC 80 Reducing Tee (SxSxS), Bushed	9801523FB	ICC-ES-PMG
6" x 3/4" CPVC 80 Reducing Tee	9801524FB	ICC-ES-PMG

(SxSxS), Bushed		
6" x 1" CPVC 80 Reducing Tee (SxSxS), Bushed	9801525FB	ICC-ES-PMG
6" x 1-1/4" CPVC 80 Reducing Tee (SxSxS), Bushed	9801526FB	ICC-ES-PMG
6" x 1-1/2" CPVC 80 Reducing Tee (SxSxS), Bushed	9801527FB	ICC-ES-PMG
6" x 2" CPVC 80 Reducing Tee (SxSxS)	9801528	ICC-ES-PMG
6" x 2-1/2" CPVC 80 Reducing Tee (SxSxS), Bushed, 2 Step	9801529FB	ICC-ES-PMG
6" x 3" CPVC 80 Reducing Tee (SxSxS), Bushed	9801530FB	ICC-ES-PMG
6" x 4" CPVC 80 Reducing Tee (SxSxS)	9801532	ICC-ES-PMG
8" x 3/4" CPVC 80 Reducing Tee (SxSxS), Bushed, 3 Step	9801574FB	ICC-ES-PMG
8" x 6" CPVC 80 Reducing Tee (SxSxS)	9801585	ICC-ES-PMG

Installation	Related applications
Make connections via solvent welding using primer and solvent cement designed specifically for Schedule 80 CPVC pipe and fittings. Refer to the Uponor ChlorFIT Manual or Uponor ChlorFIT Solvent Welding Instruction Sheet for complete details.	<p>Agua doméstica</p> <p>Tuberías hidráulicas</p>

Footnotes	Contact information	
-	<p>Uponor Inc.</p> <p>5925 148th Street West</p> <p>Apple Valley, MN 55124</p> <p>T 800.321.4739</p> <p>F 952.891.2008</p>	<p>Uponor Ltd.</p> <p>6510 Kennedy Road</p> <p>Mississauga, ON L5T 2X4</p> <p>T 888.594.7726</p> <p>F 800.638.9517</p>