

ChlorFIT Acoplamiento de Accesorios Reductores

Project Information

Job name:	Location:
Engineer:	Fecha de envío:
Contractor:	Presentada por:
Manufacturer's representative:	Approved by:

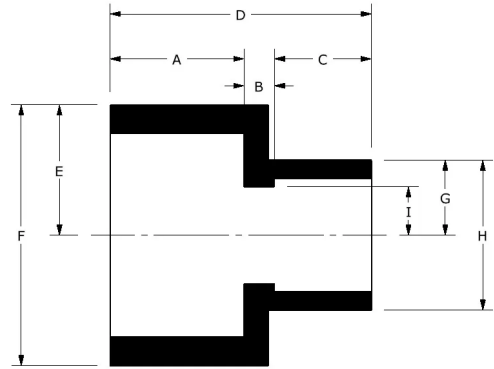
Technical data

Material CPVC

Product information and application use

Utilice los acoplamientos de CPVC Corzan® ChlorFIT® Schedule 80 de Uponor en sistemas de agua potable fría y caliente, así como en aplicaciones hidráulicas de calefacción y refrigeración.

Corzan® is a registered trademark of Lubrizol Advanced Materials, Inc.



Part name	Part no.	A [Inch]	B [Inch]	C [Inch]	D [Inch]	E [Inch]	F [Inch]	G [Inch]	H [Inch]	I [Inch]	End Type 1
3/4" x 1/2" CPVC 80 Reducing Coupling (SxS)	9829101	1.047	0.11	0.922	2.079	0.755	1.51	0.64	1.28	0.28	Socket 3/4"
1" x 1/2" CPVC 80 Reducing Coupling (SxS)	9829130	1.188	0.1	0.922	2.21	0.925	1.85	0.64	1.28	0.28	Socket 1"
1" x 3/4" CPVC 80 Reducing Coupling (SxS)	9829131	1.134	0.117	1.009	2.26	0.928	1.857	0.763	1.526	0.41	Socket 1"
1-1/4" x 3/4" CPVC 80 Reducing Coupling (SxS), Bushed	9829167FB	1.272	0.686	1.012	2.97	1.044	2.088	1.09	2.18	0.82	Socket 1-1/4"
1-1/4" x 1" CPVC 80 Reducing Coupling (SxS), Bushed	9829168FB	1.272	0.567	1.148	2.987	1.044	2.088	1.089	2.178	0.525	Socket 1-1/4"
1-1/2" x 1/2" CPVC 80 Reducing Coupling (SxS), Bushed	9829209FB	1.394	0.108	1.151	2.654	1.302	2.603	0.928	1.855	0.526	Socket 1-1/2"
1-1/2" x 3/4" CPVC 80 Reducing Coupling (SxS), Bushed	9829210FB	1.394	0.52	1.022	2.937	1.302	2.603	0.928	1.855	0.411	Socket 1-1/2"
1-1/2" x 1" CPVC 80 Reducing Coupling (SxS)	9829211	1.438	0.124	1.188	2.75	1.25	2.5	0.925	1.85	0.525	Socket 1-1/2"
1-1/2" x 1-1/4" CPVC 80 Reducing Coupling (SxS)	9829212	1.438	0.1	1.312	2.85	1.25	2.5	1.065	2.13	0.645	Socket 1-1/2"
2" x 1/2" CPVC 80 Reducing Coupling (SxS), Bushed	9829247FB	1.69	0.316	1.147	3.153	1.587	3.174	0.881	1.762	0.554	Socket 2"
2" x 3/4" CPVC 80 Reducing Coupling (SxS), Bushed	9829248FB	1.69	0.316	1.147	3.153	1.587	3.174	0.881	1.762	0.554	Socket 2"
2" x 1" CPVC 80 Reducing Coupling (SxS)	9829249	1.562	0.355	1.133	3.05	1.52	3.04	0.875	1.75	0.565	Socket 2"
2" x 1-1/4" CPVC 80 Reducing Coupling (SxS)	9829250	1.562	0.126	1.312	3	1.52	3.04	1.065	2.13	0.75	Socket 2"
2" x 1-1/2" CPVC 80 Reducing Coupling (SxS)	9829251	1.562	0.107	1.381	3.05	1.52	3.04	1.252	2.504	0.76	Socket 2"
2-1/2" x 1/2" CPVC 80 Reducing Coupling (SxS), Bushed	9829287FB	1.822	0.918	0.903	3.643	1.813	3.627	1.195	2.39	0.307	Socket 2-1/2"
2-1/2" x 3/4" CPVC 80 Reducing Coupling (SxS), Bushed	9829288FB	1.822	0.814	1.007	3.643	1.813	3.627	1.23	2.459	0.411	Socket 2-1/2"
2-1/2" x 1" CPVC 80 Reducing Coupling (SxS), Bushed	9829289FB	1.759	0.687	1.141	3.586	1.81	3.62	1.063	2.125	0.52	Socket 2-1/2"
2-1/2" x 1-1/4" CPVC 80 Reducing Coupling (SxS), Bushed	9829290FB	1.822	0.589	1.272	3.683	1.813	3.627	1.23	2.459	0.687	Socket 2-1/2"
2-1/2" x 1-1/2" CPVC 80 Reducing Coupling (SxS)	9829291	1.759	0.14	1.381	3.28	1.75	3.5	1.19	2.38	0.875	Socket 2-1/2"
2-1/2" x 2" CPVC 80 Reducing Coupling (SxS), Bushed	9829292FB	1.789	0.649	1.63	4.067	1.744	3.488	1.772	3.545	1.03	Socket

3" x 1" CPVC 80 Reducing Coupling (SxS), Bushed	9829335FB	1.933	0.85	1.143	3.926	2.267	4.533	1.52	3.039	0.524	Socket 3"
3" x 1-1/2" CPVC 80 Reducing Coupling (SxS), Bushed	9829337FB	1.893	1.173	1.501	4.567	2.096	4.192	1.981	3.963	0.815	Socket 3"
3" x 2" CPVC 80 Reducing Coupling (SxS)	9829338	1.945	0.165	1.5	3.61	2.196	4.391	1.515	3.03	0.98	Socket 3"
3" x 2-1/2" CPVC 80 Reducing Coupling (SxS), Bushed	9829339FB	1.893	0.678	1.843	4.413	2.096	4.192	1.981	3.963	1.2	Socket 3"
4" x 1" CPVC 80 Reducing Coupling (SxS), Bushed	9829417FB	2.304	1.487	1.141	4.932	2.828	5.655	2.208	4.416	0.52	Socket 4"
4" x 1-1/2" CPVC 80 Reducing Coupling (SxS), Bushed	9829419FB	2.304	1.103	1.542	4.949	2.828	5.655	2.208	4.416	0.761	Socket 4"
4" x 2" CPVC 80 Reducing Coupling (SxS), Bushed	9829420FB	2.304	0.217	1.861	4.382	2.828	5.655	2.208	4.416	1.454	Socket 4"
4" x 2-1/2" CPVC 80 Reducing Coupling (SxS), Bushed	9829421FB	2.304	0.593	1.894	4.791	2.828	5.655	2.208	4.416	1.225	Socket 4"
4" x 3" CPVC 80 Reducing Coupling (SxS)	9829422	2.253	0.254	1.883	4.39	2.763	5.527	2.204	4.407	1.46	Socket 4"
6" x 1-1/2" CPVC 80 Reducing Coupling (SxS), Bushed, 3 Step	9829527FB	3.04	2.937	1.486	7.463	3.78	7.56	1.981	3.963	0.815	Socket 6"
6" x 2" CPVC 80 Reducing Coupling (SxS), Bushed	9829528FB	4.456	4.602	1.562	10.62	3.959	7.919	2.755	5.51	1	Socket 6"
6" x 2-1/2" CPVC 80 Reducing Coupling (SxS), Bushed, 2 Step	9829529FB	3.04	2.442	1.843	7.325	3.78	7.56	1.845	3.69	1.2	Socket 6"
6" x 3" CPVC 80 Reducing Coupling (SxS), Bushed	9829530FB	4.456	4.23	1.966	10.652	3.959	7.919	2.813	5.626	1.654	Socket 6"
6" x 4" CPVC 80 Reducing Coupling (SxS)	9829532	4.456	3.456	2.26	10.172	3.959	7.919	2.755	5.51	1.943	Socket 6"
8" x 4" CPVC 80 Reducing Coupling (SxS), Bushed	9829582FB	4.033	2.107	3.037	9.176	4.9	9.8	3.903	7.806	3.074	Socket 8"
8" x 6" CPVC 80 Reducing Coupling (SxS)	9829585	4.033	2.107	3.037	9.176	4.9	9.8	3.903	7.806	3.074	Socket 8"

Part name	Part no.	End Type 2	Operating Temperature 1 [°F]	Operating Temperature 2 [°F]	Weight per UOM [lbs/UOM]
3/4" x 1/2" CPVC 80 Reducing Coupling (SxS)	9829101	Socket 1/2"	73 °F (23 °C) at 690 psi (23 °C)	180 °F (82 °C) at 170 psi (82 °C)	0.1
1" x 1/2" CPVC 80 Reducing Coupling (SxS)	9829130	Socket 1/2"	73 °F (23 °C) at 630 psi (23 °C)	180 °F (82 °C) at 155 psi (82 °C)	0.14
1" x 3/4" CPVC 80 Reducing Coupling (SxS)	9829131	Socket 3/4"	73 °F (23 °C) at 630 psi (23 °C)	180 °F (82 °C) at 155 psi (82 °C)	0.15
1-1/4" x 3/4" CPVC 80 Reducing Coupling (SxS), Bushed	9829167FB	Socket 3/4"	73 °F (23 °C) at 520 psi (23 °C)	180 °F (82 °C) at 130 psi (82 °C)	0.18
1-1/4" x 1" CPVC 80 Reducing Coupling (SxS), Bushed	9829168FB	Socket 1"	73 °F (23 °C) at 520 psi (23 °C)	180 °F (82 °C) at 130 psi (82 °C)	0.37
1-1/2" x 1/2" CPVC 80 Reducing Coupling (SxS), Bushed	9829209FB	Socket 1/2"	73 °F (23 °C) at 470 psi (23 °C)	180 °F (82 °C) at 115 psi (82 °C)	0.23
1-1/2" x 3/4" CPVC 80 Reducing Coupling (SxS), Bushed	9829210FB	Socket 3/4"	73 °F (23 °C) at 470 psi (23 °C)	180 °F (82 °C) at 115 psi (82 °C)	0.94
1-1/2" x 1" CPVC 80 Reducing Coupling (SxS)	9829211	Socket 1"	73 °F (23 °C) at 470 psi (23 °C)	180 °F (82 °C) at 115 psi (82 °C)	0.29
1-1/2" x 1-1/4" CPVC 80 Reducing Coupling (SxS)	9829212	Socket 1-1/4"	73 °F (23 °C) at 470 psi (23 °C)	180 °F (82 °C) at 115 psi (82 °C)	0.29
2" x 1/2" CPVC 80 Reducing Coupling (SxS), Bushed	9829247FB	Socket 1/2"	73 °F (23 °C) at 400 psi (23 °C)	180 °F (82 °C) at 100 psi (82 °C)	0.3
2" x 3/4" CPVC 80 Reducing Coupling (SxS), Bushed	9829248FB	Socket 3/4"	73 °F (23 °C) at 400 psi (23 °C)	180 °F (82 °C) at 100 psi (82 °C)	0.61
2" x 1" CPVC 80 Reducing Coupling (SxS)	9829249	Socket 1"	73 °F (23 °C) at 400 psi (23 °C)	180 °F (82 °C) at 100 psi (82 °C)	0.62
2" x 1-1/4" CPVC 80 Reducing Coupling (SxS)	9829250	Socket 1-1/4"	73 °F (23 °C) at 400 psi (23 °C)	180 °F (82 °C) at 100 psi (82 °C)	0.71
2" x 1-1/2" CPVC 80 Reducing Coupling (SxS)	9829251	Socket 1-1/2"	73 °F (23 °C) at 400 psi (23 °C)	180 °F (82 °C) at 100 psi (82 °C)	0.71
2-1/2" x 1/2" CPVC 80 Reducing Coupling (SxS), Bushed	9829287FB	Socket 1/2"	73 °F (23 °C) at 420 psi (23 °C)	180 °F (82 °C) at 105 psi (82 °C)	0.66
2-1/2" x 3/4" CPVC 80 Reducing Coupling (SxS), Bushed	9829288FB	Socket 3/4"	73 °F (23 °C) at 420 psi (23 °C)	180 °F (82 °C) at 105 psi (82 °C)	0.67

2-1/2" x 1" CPVC 80 Reducing Coupling (SxS), Bushed	9829289FB	Socket 1"	73 °F (23 °C) at 420 psi (23 °C)	180 °F (82 °C) at 105 psi (82 °C)	0.64
2-1/2" x 1-1/4" CPVC 80 Reducing Coupling (SxS), Bushed	9829290FB	Socket 1-1/4"	73 °F (23 °C) at 420 psi (23 °C)	180 °F (82 °C) at 105 psi (82 °C)	0.59
2-1/2" x 1-1/2" CPVC 80 Reducing Coupling (SxS)	9829291	Socket 1-1/2"	73 °F (23 °C) at 420 psi (23 °C)	180 °F (82 °C) at 105 psi (82 °C)	0.8
2-1/2" x 2" CPVC 80 Reducing Coupling (SxS), Bushed	9829292FB	Socket 2"	73 °F (23 °C) at 420 psi (23 °C)	180 °F (82 °C) at 105 psi (82 °C)	1.2
3" x 1" CPVC 80 Reducing Coupling (SxS), Bushed	9829335FB	Socket 1"	73 °F (23 °C) at 370 psi (23 °C)	180 °F (82 °C) at 90 psi (82 °C)	0.7
3" x 1-1/2" CPVC 80 Reducing Coupling (SxS), Bushed	9829337FB	Socket 1-1/2"	73 °F (23 °C) at 370 psi (23 °C)	180 °F (82 °C) at 90 psi (82 °C)	0.93
3" x 2" CPVC 80 Reducing Coupling (SxS)	9829338	Socket 2"	73 °F (23 °C) at 370 psi (23 °C)	180 °F (82 °C) at 90 psi (82 °C)	1
3" x 2-1/2" CPVC 80 Reducing Coupling (SxS), Bushed	9829339FB	Socket 2-1/2"	73 °F (23 °C) at 370 psi (23 °C)	180 °F (82 °C) at 90 psi (82 °C)	1.56
4" x 1" CPVC 80 Reducing Coupling (SxS), Bushed	9829417FB	Socket 1"	73 °F (23 °C) at 320 psi (23 °C)	180 °F (82 °C) at 80 psi (82 °C)	2.43
4" x 1-1/2" CPVC 80 Reducing Coupling (SxS), Bushed	9829419FB	Socket 1-1/2"	73 °F (23 °C) at 320 psi (23 °C)	180 °F (82 °C) at 80 psi (82 °C)	2.56
4" x 2" CPVC 80 Reducing Coupling (SxS), Bushed	9829420FB	Socket 2"	73 °F (23 °C) at 320 psi (23 °C)	180 °F (82 °C) at 80 psi (82 °C)	2.61
4" x 2-1/2" CPVC 80 Reducing Coupling (SxS), Bushed	9829421FB	Socket 2-1/2"	73 °F (23 °C) at 320 psi (23 °C)	180 °F (82 °C) at 80 psi (82 °C)	2.33
4" x 3" CPVC 80 Reducing Coupling (SxS)	9829422	Socket 3"	73 °F (23 °C) at 320 psi (23 °C)	180 °F (82 °C) at 80 psi (82 °C)	1.82
6" x 1-1/2" CPVC 80 Reducing Coupling (SxS), Bushed, 3 Step	9829527FB	Socket 1-1/2"	73 °F (23 °C) at 280 psi (23 °C)	180 °F (82 °C) at 70 psi (82 °C)	8.23
6" x 2" CPVC 80 Reducing Coupling (SxS), Bushed	9829528FB	Socket 2"	73 °F (23 °C) at 280 psi (23 °C)	180 °F (82 °C) at 70 psi (82 °C)	2.09
6" x 2-1/2" CPVC 80 Reducing Coupling (SxS), Bushed, 2 Step	9829529FB	Socket 2-1/2"	73 °F (23 °C) at 280 psi (23 °C)	180 °F (82 °C) at 70 psi (82 °C)	8.23
6" x 3" CPVC 80 Reducing Coupling (SxS), Bushed	9829530FB	Socket 3"	73 °F (23 °C) at 280 psi (23 °C)	180 °F (82 °C) at 70 psi (82 °C)	8.23
6" x 4" CPVC 80 Reducing Coupling (SxS)	9829532	Socket 4"	73 °F (23 °C) at 280 psi (23 °C)	180 °F (82 °C) at 70 psi (82 °C)	7.3
8" x 4" CPVC 80 Reducing Coupling (SxS), Bushed	9829582FB	Socket 4"	73 °F (23 °C) at 250 psi (23 °C)	180 °F (82 °C) at 60 psi (82 °C)	13.44
8" x 6" CPVC 80 Reducing Coupling (SxS)	9829585	Socket 6"	73 °F (23 °C) at 250 psi (23 °C)	180 °F (82 °C) at 60 psi (82 °C)	8.23

Part name	Part no.	Codes	Standards	Listings
ChlorFIT Acoplamiento de Accesorios Reductores	All	UPC IBC IRC IPC UMC NSPC IMC	ASTM F439 NSF/ANSI/CAN 61 NSF/ANSI 14	ULC NSFpw-G U.P.Code
In addition, the following parts have additional codes, standards, or listings:				
3/4" x 1/2" CPVC 80 Reducing Coupling (SxS)	9829101			ICC-ES-PMG
1" x 1/2" CPVC 80 Reducing Coupling (SxS)	9829130			ICC-ES-PMG
1" x 3/4" CPVC 80 Reducing Coupling (SxS)	9829131			ICC-ES-PMG
1-1/4" x 3/4" CPVC 80 Reducing Coupling (SxS), Bushed	9829167FB			ICC-ES-PMG
1-1/4" x 1" CPVC 80 Reducing Coupling (SxS), Bushed	9829168FB			ICC-ES-PMG
1-1/2" x 1/2" CPVC 80 Reducing Coupling (SxS), Bushed	9829209FB			ICC-ES-PMG
1-1/2" x 3/4" CPVC 80 Reducing Coupling (SxS), Bushed	9829210FB			ICC-ES-PMG
1-1/2" x 1" CPVC 80 Reducing Coupling (SxS)	9829211			ICC-ES-PMG
1-1/2" x 1-1/4" CPVC 80 Reducing Coupling (SxS)	9829212			ICC-ES-PMG
2" x 1/2" CPVC 80 Reducing Coupling (SxS), Bushed	9829247FB			ICC-ES-PMG
2" x 3/4" CPVC 80 Reducing Coupling (SxS), Bushed	9829248FB			ICC-ES-PMG
2" x 1" CPVC 80 Reducing Coupling	9829249			ICC-ES-PMG

(SxS)		
2" x 1-1/4" CPVC 80 Reducing Coupling (SxS)	9829250	ICC-ES-PMG
2" x 1-1/2" CPVC 80 Reducing Coupling (SxS)	9829251	ICC-ES-PMG
2-1/2" x 1/2" CPVC 80 Reducing Coupling (SxS), Bushed	9829287FB	ICC-ES-PMG
2-1/2" x 3/4" CPVC 80 Reducing Coupling (SxS), Bushed	9829288FB	ICC-ES-PMG
2-1/2" x 1" CPVC 80 Reducing Coupling (SxS), Bushed	9829289FB	ICC-ES-PMG
2-1/2" x 1-1/4" CPVC 80 Reducing Coupling (SxS), Bushed	9829290FB	ICC-ES-PMG
2-1/2" x 1-1/2" CPVC 80 Reducing Coupling (SxS)	9829291	ICC-ES-PMG
2-1/2" x 2" CPVC 80 Reducing Coupling (SxS), Bushed	9829292FB	ICC-ES-PMG
3" x 1" CPVC 80 Reducing Coupling (SxS), Bushed	9829335FB	ICC-ES-PMG
3" x 1-1/2" CPVC 80 Reducing Coupling (SxS), Bushed	9829337FB	ICC-ES-PMG
3" x 2" CPVC 80 Reducing Coupling (SxS)	9829338	ICC-ES-PMG
3" x 2-1/2" CPVC 80 Reducing Coupling (SxS), Bushed	9829339FB	ICC-ES-PMG
4" x 1" CPVC 80 Reducing Coupling (SxS), Bushed	9829417FB	ICC-ES-PMG
4" x 1-1/2" CPVC 80 Reducing Coupling (SxS), Bushed	9829419FB	ICC-ES-PMG
4" x 2" CPVC 80 Reducing Coupling (SxS), Bushed	9829420FB	ICC-ES-PMG
4" x 2-1/2" CPVC 80 Reducing Coupling (SxS), Bushed	9829421FB	ICC-ES-PMG
4" x 3" CPVC 80 Reducing Coupling (SxS)	9829422	ICC-ES-PMG
6" x 1-1/2" CPVC 80 Reducing Coupling (SxS), Bushed, 3 Step	9829527FB	ICC-ES-PMG
6" x 2" CPVC 80 Reducing Coupling (SxS), Bushed	9829528FB	ICC-ES-PMG
6" x 2-1/2" CPVC 80 Reducing Coupling (SxS), Bushed, 2 Step	9829529FB	ICC-ES-PMG
6" x 3" CPVC 80 Reducing Coupling (SxS), Bushed	9829530FB	ICC-ES-PMG
6" x 4" CPVC 80 Reducing Coupling (SxS)	9829532	ICC-ES-PMG

Installation	Related applications
Realice las conexiones mediante soldadura con solvente utilizando imprimación y cemento solvente diseñado específicamente para tuberías y accesorios de CPVC Cédula 80. Consulte el Manual de Uponor ChlorFIT o la Hoja de instrucciones de soldadura con solvente de Uponor ChlorFIT para obtener detalles completos.	Agua doméstica Tuberías hidráulicas

Footnotes	Contact information	
-	Uponor Inc. 5925 148th Street West Apple Valley, MN 55124 T 800.321.4739 F 952.891.2008	Uponor Ltd. 6510 Kennedy Road Mississauga, ON L5T 2X4 T 888.594.7726 F 800.638.9517