

Adaptateurs en cuivre de type QS

Renseignements sur le projet

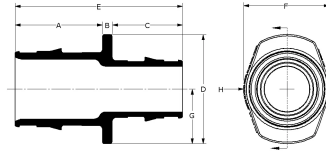
Nom du poste :	Lieu :
Ingénieur :	Date de soumission:
Entrepreneur :	Présentée par:
Représentant du fabricant :	Approuvé par :

Données techniques

Material	Brass
Temp/pressure ratings	73 °F (23 °C) at 160 psi (11 bar) 180 °F (82 °C) at 100 psi (6.9 bar) 200 °F (93 °C) at 80 psi (5.5 bar)
Prop 65 label required?	Yes

Informations sur le produit et utilisation de l'application

The Uponor QS-style Copper Adapters, combined with the appropriate QS-style Fitting Assembly, transition Wirsbo hePEX™ or Uponor AquaPEX® tubing to 1/2" and 3/4" copper pipe in hydronic heating applications.



Nom de la pièce	Numéro de pièce	A [inch]	B [inch]	C [inch]	D [inch]	E [inch]	F [inch]	G [inch]	H [inch]	Weight per UOM [lbs/UOM]	End Type 1
QS-style Copper Adapter, R20 x 1/2" Copper	A4332050	0.527	0.26	0.512	1.224	1.299	1.063	0.612	0.531	0.14	ISO 228-G 3/4"
QS-style Copper Adapter, R20 x 3/4" Copper	A4332075	0.512	0.275	0.612	1.224	1.399	1.063	0.612	0.531	0.14	ISO 228-G 3/4"
QS-style Copper Adapter, R25 x 3/4" Copper (for 3/4" and 5/8" tubing only)	A4332575	0.599	0.299	1.038	1.585	1.375	1.936	1.309	1.124	0.3	ISO 228-G 1"

Nom de la pièce	Numéro de pièce	End Type 2
QS-style Copper Adapter, R20 x 1/2" Copper	A4332050	Sweat 1/2"
QS-style Copper Adapter, R20 x 3/4" Copper	A4332075	Sweat 3/4"
QS-style Copper Adapter, R25 x 3/4" Copper (for 3/4" and 5/8" tubing only)	A4332575	Sweat 3/4"

L'installation

The corresponding compression fitting threads onto the R20 or R25 thread to adapt to copper. For additional information, refer to the Uponor Radiant Floor Heating Installation Handbook.

Applications connexes

- Radiant Heating and Cooling Systems
- Permafrost Protection Systems
- Turf Conditioning Systems

Les codes	Normes	Annonces
-	ASTM F877 R20:	-

Notes de bas de page

Coordonnées de la personne-ressource

	Uponor Inc.	Uponor Ltd.
-	5925 148th Street West Apple Valley, MN 55124 T 800.321.4739 F 952.891.2008	6510 Kennedy Road Mississauga, ON L5T 2X4 T 888.594.7726 F 800.638.9517