

Adaptateurs en cuivre de type QS

Renseignements sur le projet

Nom du poste :

Lieu :

Ingénieur :

Date de
soumission:

Entrepreneur :

Présentée par:

Représentant du fabricant :

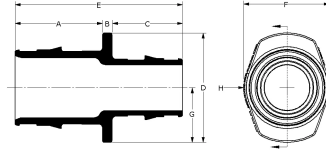
Approuvé par :

Données techniques

| | |
|-------------------------|--|
| Material | Brass |
| Temp/pressure ratings | 73 °F (23 °C) at 160 psi (11 bar) 180 °F (82 °C) at 100 psi (6.9 bar) 200 °F (93 °C) at 80 psi (5.5 bar) |
| Prop 65 label required? | Yes |

Informations sur le produit et utilisation de l'application

The Uponor QS-style Copper Adapters, combined with the appropriate QS-style Fitting Assembly, transition Wirsbo hePEXTM or Uponor AquaPEX® tubing to 1/2" and 3/4" copper pipe in hydronic heating applications.



| Nom de la pièce | Numéro de pièce | A [inch] | B [inch] | C [inch] | D [inch] | E [inch] | F [inch] | G [inch] | H [inch] | End Type 1 | End Type 2 |
|--|-----------------|----------|----------|----------|----------|----------|----------|----------|----------|----------------|------------|
| QS-style Copper Adapter, R20 x 3/4" Copper | A4332075 | 0.512 | 0.275 | 0.612 | 1.224 | 1.399 | 1.063 | 0.612 | 0.531 | ISO 228-G 3/4" | Sweat 3/4" |
| QS-style Copper Adapter, R25 x 3/4" Copper (for 3/4" and 5/8" tubing only) | A4332575 | 0.599 | 0.299 | 1.038 | 1.585 | 1.375 | 1.936 | 1.309 | 1.124 | ISO 228-G 1" | Sweat 3/4" |
| QS-style Copper Adapter, R20 x 1/2" Copper | A4332050 | 0.527 | 0.26 | 0.512 | 1.224 | 1.299 | 1.063 | 0.612 | 0.531 | ISO 228-G 3/4" | Sweat 1/2" |

| Nom de la pièce | Numéro de pièce | Weight per UOM [lbs/UOM] |
|--|-----------------|--------------------------|
| QS-style Copper Adapter, R20 x 3/4" Copper | A4332075 | 0.14 |
| QS-style Copper Adapter, R25 x 3/4" Copper (for 3/4" and 5/8" tubing only) | A4332575 | 0.3 |
| QS-style Copper Adapter, R20 x 1/2" Copper | A4332050 | 0.14 |

| Nom de la pièce | Numéro de pièce | Les codes | Normes | Annonces |
|---|-----------------|-----------|-------------------|----------|
| Adaptateurs en cuivre de type QS | All | - | ASTM F877 | - |
| In addition, the following parts have additional codes, standards, or listings: | | | | |
| QS-style Copper Adapter, R20 x 3/4" Copper | A4332075 | | R20: ISO 228-G ¾" | |
| QS-style Copper Adapter, R25 x 3/4" Copper (for 3/4" and 5/8" tubing only) | A4332575 | | R25: ISO 228-G 1" | |
| QS-style Copper Adapter, R20 x 1/2" Copper | A4332050 | | R20: ISO 228-G ¾" | |

L'installation

The corresponding compression fitting threads onto the R20 or R25 thread to adapt to copper. For additional information, refer to the Uponor Radiant Floor Heating Installation Handbook.

Applications connexes

- Radiant Heating and Cooling Systems
- Permafrost Protection Systems
- Turf Conditioning Systems

Notes de bas de page

Coordonnées de la personne-ressource

Uponor Inc.
5925 148th Street West
Apple Valley, MN 55124
T 800.321.4739
F 952.891.2008

Uponor Ltd.
6510 Kennedy Road
Mississauga, ON L5T 2X4
T 888.594.7726
F 800.638.9517