

Rails en PEX

Renseignements sur le projet

Nom du poste :

Lieu :

Ingénieur :

Date de soumission:

Entrepreneur :

Présentée par:

Représentant du fabricant :

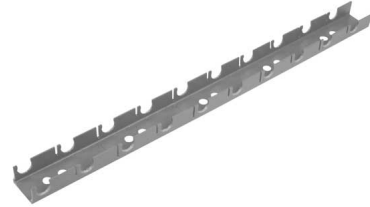
Approuvé par :

Données techniques

Material Plastic

Informations sur le produit et utilisation de l'application

Plastic PEX Rail secures Uponor PEX tubing products to metal, concrete and wood support structures. Note: Suitable fastening hardware is required (not included).



| Nom de la pièce | Numéro de pièce | Weight per UOM [lbs/UOM] |
|------------------------|-----------------|--------------------------|
| 1/2" PEX Rail, 6.5 ft. | A5700500 | 1.1 |
| 5/8" PEX Rail, 6.5 ft. | A5700625 | 1 |
| 3/4" PEX Rail, 6.5 ft. | A5700750 | 1.35 |

L'installation

Lay out the tube rails parallel with the floor joists (perpendicular to the tubing layout direction). Space the rails 12 inches from the edge of the wall and 36 inches on center thereafter. Fasten the rails to the subfloor using 1" wood screws, liquid nails or silicone. Refer to the Uponor Radiant Installation Handbook for additional information.

Applications connexes

- Radiant Heating and Cooling Systems
- Turf Conditioning Systems
- Permafrost Prevention Systems
- Snow and Ice Melt Systems

| Les codes | Normes | Annonces |
|-----------|--------|----------|
| - | - | - |

| Notes de bas de page | Coordonnées de la personne-ressource | |
|----------------------|---|---|
| - | Uponor Inc. 5925 148th Street West Apple Valley, MN 55124 T 800.321.4739 F 952.891.2008 | Uponor Ltd. 6510 Kennedy Road Mississauga, ON L5T 2X4 T 888.594.7726 F 800.638.9517 |