

# Adaptateurs ProPEX pour coude applique en laiton sans plomb (LF)



## Renseignements sur le projet

Nom du poste :	Lieu :
Ingénieur :	Date de soumission:
Entrepreneur :	Présentée par:
Représentant du fabricant :	Approuvé par :

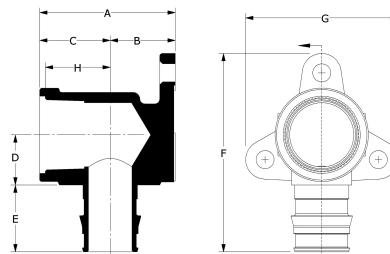
## Données techniques

Material	LF Brass
Temp/pressure ratings	73 °F (23 °C) at 160 psi (11 bar) 180 °F (82 °C) at 100 psi (6.9 bar) 200 °F (93 °C) at 80 psi (5.5 bar)
Prop 65 label required?	Yes

## Informations sur le produit et utilisation de l'application

Uponor offers the ProPEX® Lead-free Drop Ear Brass Elbow for use in hot and cold domestic potable water systems.<sup>1</sup> One end of the adapter connects to female iron pipe (FIP) and the other end includes an Uponor ProPEX fitting for connections to Uponor AquaPEX® tubing.

Note: Temperature and pressure ratings stated are hydrostatic ratings. For domestic hot-water (DHW) and DHW recirculation installations, operating conditions should not exceed 140°F (60°C) at 80 psi (5.5 bar) in accordance with ASTM F2023. For additional information regarding application-specific temperature and pressure ratings, refer to the Uponor PEX Piping Systems Design and Installation Manual.



Nom de la pièce	Numéro de pièce	A [inch]	B [inch]	C [inch]	D [inch]	E [inch]	F [inch]	G [inch]	H [inch]	End Type 1	End Type 2
ProPEX LF Brass Drop Ear Elbow, 1/2" PEX x 3/8" FIP	LF4235038	1.696	0.653	1.043	0.531	0.709	2.203	1.926	0.939	ProPEX 1/2"	FNPT 3/8"
ProPEX LF Brass Drop Ear Elbow, 1/2" PEX x 1/2" FIP	LF4235050	1.696	0.653	1.043	0.531	0.709	2.203	1.926	0.934	ProPEX 1/2"	FNPT 1/2"
ProPEX LF Brass Drop Ear Elbow, 3/4" PEX x 3/4" FIP	LF4237575	1.92	0.92	1	0.71	0.945	2.805	2.154	0.9	ProPEX 3/4"	FNPT 3/4"
ProPEX LF Brass Drop Ear Elbow, 1" PEX x 1" FIP	LF4231010	2.45	1.1	1.35	0.85	1.181	3.326	2.481	1.245	ProPEX 1"	FNPT 1"

Nom de la pièce	Numéro de pièce	Weight per UOM [lbs/UOM]
ProPEX LF Brass Drop Ear Elbow, 1/2" PEX x 3/8" FIP	LF4235038	0.27
ProPEX LF Brass Drop Ear Elbow, 1/2" PEX x 1/2" FIP	LF4235050	0.2
ProPEX LF Brass Drop Ear Elbow, 3/4" PEX x 3/4" FIP	LF4237575	0.47
ProPEX LF Brass Drop Ear Elbow, 1" PEX x 1" FIP	LF4231010	0.87

Nom de la pièce	Numéro de pièce	Les codes	Normes	Annonces
Adaptateurs ProPEX pour coude applique en laiton sans plomb (LF)	All	UPC IBC IRC IPC NPC of Canada UMC NSPC IMC	ASTM F877 NSF/ANSI/CAN 372 ASTM F1960 CSA B137.5 NSF/ANSI/CAN 61 NSF/ANSI 14	ICC-ES-PMG cNSFus-pw-G U.P.Code
In addition, the following parts have additional codes, standards, or listings:				
ProPEX LF Brass Drop Ear Elbow, 3/4" PEX x 3/4" FIP	LF4237575			

L'installation	Applications connexes
A ProPEX Ring is required for making ProPEX connections. Use the appropriate ProPEX Ring for tubing. For more information, refer to the Uponor Professional Plumbing Installation Guide.	PEX-a Plumbing Systems

Notes de bas de page	Coordonnées de la personne-ressource		
-	<table border="0"> <tr> <td>Uponor Inc. 5925 148th Street West Apple Valley, MN 55124 T 800.321.4739 F 952.891.2008</td> <td>Uponor Ltd. 6510 Kennedy Road Mississauga, ON L5T 2X4 T 888.594.7726 F 800.638.9517</td> </tr> </table>	Uponor Inc. 5925 148th Street West Apple Valley, MN 55124 T 800.321.4739 F 952.891.2008	Uponor Ltd. 6510 Kennedy Road Mississauga, ON L5T 2X4 T 888.594.7726 F 800.638.9517
Uponor Inc. 5925 148th Street West Apple Valley, MN 55124 T 800.321.4739 F 952.891.2008	Uponor Ltd. 6510 Kennedy Road Mississauga, ON L5T 2X4 T 888.594.7726 F 800.638.9517		