

# Adaptateurs filetés mâles ProPEX en laiton

## Renseignements sur le projet

|                             |                     |
|-----------------------------|---------------------|
| Nom du poste :              | Lieu :              |
| Ingénieur :                 | Date de soumission: |
| Entrepreneur :              | Présentée par:      |
| Représentant du fabricant : | Approuvé par :      |

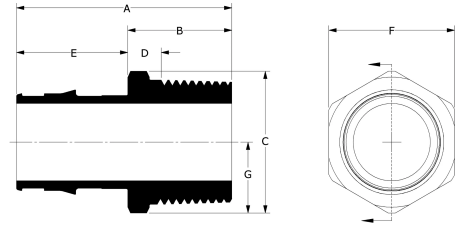
## Données techniques

|                         |                                     |
|-------------------------|-------------------------------------|
| Temp/pressure ratings   | 73 °F (23 °C) at 160 psi (11 bar)   |
|                         | 180 °F (82 °C) at 100 psi (6.9 bar) |
|                         | 200 °F (93 °C) at 80 psi (5.5 bar)  |
| Prop 65 label required? | Yes                                 |

## Informations sur le produit et utilisation de l'application

ProPEX® male threaded adapters connect Uponor PEX pipe to male NPT threads for use in hydronic heating and cooling systems. 1 One end of the adapter is manufactured with Uponor ProPEX fittings for connection to Wirsbo hePEX™ tubing and the other end is manufactured to adapt female threaded connections. These adapters are not safe for direct burial in soil. Note: Not for potable use.

Note: Temperature and pressure ratings stated are hydrostatic ratings. For domestic hot-water (DHW) and DHW recirculation installations, operating conditions should not exceed 140°F (60°C) at 80 psi (5.5 bar) in accordance with ASTM F2023. For additional information regarding application-specific temperature and pressure ratings, refer to the Uponor PEX Piping Systems Design and Installation Manual.



| Nom de la pièce  | Numéro de pièce | A [inch] | B [inch] | C [inch] | D [inch] | E [inch] | F [inch] | G [inch] | Cv    | Equivalent length through [ft] | Material group |
|--|-----------------|----------|----------|----------|----------|----------|----------|----------|-------|--------------------------------|----------------|
| ProPEX Brass Male Threaded Adapter, 1 1/2" PEX x 1 1/2" NPT    | Q5521515        | 2.829    | 1.125    | 2.202    | 0.402    | 1.704    | 1.92     | 1.101    | 39.3  | 5.5                            | Brass          |
| ProPEX Brass Male Threaded Adapter, 1 1/4" PEX x 1 1/4" NPT    | Q5521313        | 2.51     | 1.065    | 1.924    | 0.358    | 1.445    | 1.68     | 0.962    | 32.4  | 4.2                            | Brass          |
| ProPEX Brass Male Threaded Adapter, 1" PEX x 1" NPT            | Q5521010        | 2.236    | 1.055    | 1.526    | 0.372    | 1.181    | 1.335    | 0.763    | 19.9  | 3.2                            | Brass          |
| ProPEX Brass Male Threaded Adapter, 1" PEX x 3/4" NPT          | Q5521075        | 2.136    | 0.955    | 1.37     | 0.409    | 1.181    | 1.2      | 0.685    | 17.8  | 1.2                            | Brass          |
| ProPEX Brass Male Threaded Adapter, 1/2" PEX x 1/2" NPT        | Q5525050        | 1.614    | 0.905    | 0.978    | 0.371    | 0.709    | 0.86     | 0.489    | 5     | 2.3                            | Brass          |
| ProPEX Brass Male Threaded Adapter, 2" PEX x 2" NPT            | Q5522020        | 3.432    | 1.285    | 2.75     | 0.528    | 2.147    | 2.395    | 1.375    | 78.6  | 5.61                           | Brass          |
| ProPEX Brass Male Threaded Adapter, 3/4" PEX x 1" NPT          | Q5527510        | 2.05     | 1.105    | 1.526    | 0.422    | 0.945    | 1.335    | 0.763    | 10.9  | 3.4                            | Brass          |
| ProPEX Brass Male Threaded Adapter, 3/4" PEX x 1/2" NPT        | Q5527550        | 1.85     | 0.905    | 1.22     | 0.359    | 0.945    | 1.07     | 0.61     | 17.5  | 1.52                           | Brass          |
| ProPEX Brass Male Threaded Adapter, 3/4" PEX x 3/4" NPT        | Q5527575        | 1.85     | 0.905    | 1.22     | 0.359    | 0.945    | 1.07     | 0.61     | 11.3  | 2.7                            | Brass          |
| ProPEX Brass Male Threaded Adapter, 5/8" PEX x 3/4" NPT        | Q4526375        | 1.941    | 1.075    | 1.299    | 0.425    | 0.866    | 1.125    | 0.65     | -     | -                              | Brass          |
| ProPEX LF Brass Male Threaded Adapter, 1/2" PEX x 3/4" NPT     | LF4525075       | 1.639    | 0.93     | 1.206    | 0.384    | 0.709    | 1.07     | 0.603    | 6.2   | -                              | LF Brass       |
| ProPEX LF Brass Male Threaded Adapter, 2 1/2" PEX x 2 1/2" NPT | LF4522525       | 4.83     | 2        | 3.279    | 0.863    | 2.83     | 2.9      | 1.639    | 227.3 | 1.5                            | LF Brass       |
| ProPEX LF Brass Male Threaded Adapter, 3" PEX x 3" NPT         | LF4523030       | 5.38     | 2        | 3.994    | 0.8      | 3.38     | 3.52     | 1.997    | 187.5 | 9.1                            | LF Brass       |
| ProPEX LF Brass Male Threaded Adapter, 3/8" PEX x 1/2" NPT     | LF4523850       | 1.521    | 0.93     | 0.963    | 0.396    | 0.591    | 0.86     | 0.481    | 5     | 2.3                            | LF Brass       |

| Nom de la pièce   | Numéro de pièce | End Type 1    | End Type 2  | Weight per UOM [lbs/UOM] |
|---|-----------------|---------------|-------------|--------------------------|
| ProPEX Brass Male Threaded Adapter, 1 1/2" PEX x 1 1/2" NPT | Q5521515        | ProPEX 1-1/2" | MNPT 1-1/2" | 0.66                     |
| ProPEX Brass Male Threaded Adapter, 1 1/4" PEX x 1 1/4" NPT | Q5521313        | ProPEX 1-1/4" | MNPT 1-1/4" | 0.65                     |
| ProPEX Brass Male Threaded Adapter, 1" PEX x 1" NPT         | Q5521010        | ProPEX 1"     | MNPT 1"     | 0.45                     |
| ProPEX Brass Male Threaded Adapter, 1" PEX x 3/4" NPT       | Q5521075        | ProPEX 1"     | MNPT 3/4"   | 0.26                     |
| ProPEX Brass Male Threaded Adapter, 1/2" PEX x 1/2" NPT     | Q5525050        | ProPEX 1/2"   | MNPT 1/2"   | 0.12                     |
| ProPEX Brass Male Threaded Adapter, 2" PEX x 2" NPT         | Q5522020        | ProPEX 2"     | MNPT 2"     | 2                        |

|  |           |               |             |      |
|--|-----------|---------------|-------------|------|
| ProPEX Brass Male Threaded Adapter, 3/4" PEX x 1" NPT          | Q5527510  | ProPEX 3/4"   | MNPT 1"     | 0.3  |
| ProPEX Brass Male Threaded Adapter, 3/4" PEX x 1/2" NPT        | Q5527550  | ProPEX 3/4"   | MNPT 1/2"   | 0.16 |
| ProPEX Brass Male Threaded Adapter, 3/4" PEX x 3/4" NPT        | Q5527575  | ProPEX 3/4"   | MNPT 3/4"   | 0.19 |
| ProPEX Brass Male Threaded Adapter, 5/8" PEX x 3/4" NPT        | Q4526375  | ProPEX 5/8"   | MNPT 3/4"   | 0.18 |
| ProPEX LF Brass Male Threaded Adapter, 1/2" PEX x 3/4" NPT     | LF4525075 | ProPEX 1/2"   | MNPT 3/4"   | -    |
| ProPEX LF Brass Male Threaded Adapter, 2 1/2" PEX x 2 1/2" NPT | LF4522525 | ProPEX 2-1/2" | MNPT 2-1/2" | 3.1  |
| ProPEX LF Brass Male Threaded Adapter, 3" PEX x 3" NPT         | LF4523030 | ProPEX 3"     | MNPT 3"     | 4.9  |
| ProPEX LF Brass Male Threaded Adapter, 3/8" PEX x 1/2" NPT     | LF4523850 | ProPEX 3/8"   | MNPT 1/2"   | 0.11 |

| Nom de la pièce                            | Numéro de pièce | Les codes                     | Normes                          | Annonces            |
|--|-----------------|-------------------------------|---------------------------------|---------------------|
| Adaptateurs filetés mâles ProPEX en laiton | All             | IBC IRC NPC of Canada UMC IMC | ASTM F877 ASTM F1960 CSA B137.5 | IAPMO-ES ICC-ES-PMG |

In addition, the following parts have additional codes, standards, or listings:

|  |           |              |  |                         |
|--|-----------|--------------|--|-------------------------|
| ProPEX Brass Male Threaded Adapter, 1 1/2" PEX x 1 1/2" NPT    | Q5521515  |              | NSF/ANSI 14  | cNSFus-rfh              |
| ProPEX Brass Male Threaded Adapter, 1 1/4" PEX x 1 1/4" NPT    | Q5521313  |              | NSF/ANSI 14  | cNSFus-rfh              |
| ProPEX Brass Male Threaded Adapter, 1" PEX x 1" NPT            | Q5521010  |              | NSF/ANSI 14  | cNSFus-rfh              |
| ProPEX Brass Male Threaded Adapter, 1" PEX x 3/4" NPT          | Q5521075  |              | NSF/ANSI 14  | cNSFus-rfh              |
| ProPEX Brass Male Threaded Adapter, 1/2" PEX x 1/2" NPT        | Q5525050  |              | NSF-14   | cNSFus-rfh              |
| ProPEX Brass Male Threaded Adapter, 2" PEX x 2" NPT            | Q5522020  |              | NSF/ANSI 14  | cNSFus-rfh              |
| ProPEX Brass Male Threaded Adapter, 3/4" PEX x 1" NPT          | Q5527510  |              | NSF/ANSI 14  | cNSFus-rfh              |
| ProPEX Brass Male Threaded Adapter, 3/4" PEX x 1/2" NPT        | Q5527550  |              | NSF/ANSI 14  | cNSFus-rfh              |
| ProPEX Brass Male Threaded Adapter, 3/4" PEX x 3/4" NPT        | Q5527575  |              | NSF-14   | cNSFus-rfh              |
| ProPEX Brass Male Threaded Adapter, 5/8" PEX x 3/4" NPT        | Q4526375  |              | NSF/ANSI 14  | cNSFus-rfh              |
| ProPEX LF Brass Male Threaded Adapter, 1/2" PEX x 3/4" NPT     | LF4525075 | UPC IPC NSPC | NSF/ANSI/CAN 372 UL 1821 NSF/ANSI/CAN 61 NSF/ANSI 14 | cNSFus-pw-fs-G U.P.Code |
| ProPEX LF Brass Male Threaded Adapter, 2 1/2" PEX x 2 1/2" NPT | LF4522525 | UPC IPC NSPC | NSF/ANSI/CAN 372 NSF/ANSI/CAN 61 NSF/ANSI 14         | cNSFus-pw-G U.P.Code    |
| ProPEX LF Brass Male Threaded Adapter, 3" PEX x 3" NPT         | LF4523030 | UPC IPC NSPC | NSF/ANSI/CAN 372 NSF/ANSI/CAN 61 NSF/ANSI 14         | cNSFus-pw-G U.P.Code    |
| ProPEX LF Brass Male Threaded Adapter, 3/8" PEX x 1/2" NPT     | LF4523850 | UPC IPC NSPC | NSF/ANSI/CAN 372 NSF/ANSI/CAN 61 NSF/ANSI 14         | cNSFus-pw-G U.P.Code    |

| L'installation  | Applications connexes  |
|---|--|
| Use the appropriate ProPEX ring for Uponor PEX pipe (sold separately). Refer to the Uponor Radiant Installation Handbook, Complete Design Assistance Manual (CDAM), or Hydronic Piping Design Assistance Manual (HPDAM) for additional information. | <ul style="list-style-type: none"> <li>Radiant Heating and Cooling Systems</li> <li>Permafrost Protection Systems</li> <li>Turf Conditioning Systems</li> <li>Hydronic Piping Systems</li> </ul> |

| Notes de bas de page | Coordonnées de la personne-ressource  |
|----------------------|---|
| -                    | <p>Uponor Inc.<br/>5925 148th Street West<br/>Apple Valley, MN 55124<br/>T 800.321.4739<br/>F 952.891.2008</p> <p>Uponor Ltd.<br/>6510 Kennedy Road<br/>Mississauga, ON L5T 2X4<br/>T 888.594.7726<br/>F 800.638.9517</p> |