

Adaptateurs filetés femelles en laiton sans plomb (LF) ProPEX



Renseignements sur le projet

Nom du poste :	Lieu :
Ingénieur :	Date de soumission:
Entrepreneur :	Présentée par:
Représentant du fabricant :	Approuvé par :

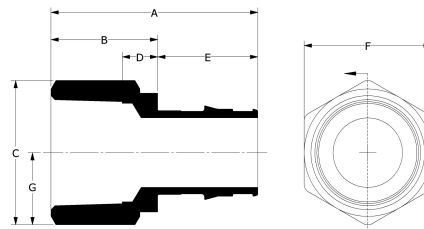
Données techniques

Material	LF Brass
Temp/pressure ratings	73 °F (23 °C) at 160 psi (11 bar) 180 °F (82 °C) at 100 psi (6.9 bar) 200 °F (93 °C) at 80 psi (5.5 bar)
Prop 65 label required?	Yes

Informations sur le produit et utilisation de l'application

The ProPEX® Lead-free Brass Female Threaded Adapter connects Uponor PEX-a tubing to female NPT threads. 1 Use these fittings in hot and cold domestic potable water systems, residential fire sprinkler systems or hydronic radiant heating and cooling systems. One end of the adapter is manufactured with the Uponor ProPEX fitting for connections to Wirsbo hePEX™ tubing or Uponor AquaPEX® tubing. The other end of the adapter connects to copper. These adapters are safe for direct burial in soil.

Note: Temperature and pressure ratings stated are hydrostatic ratings. For domestic hot-water (DHW) and DHW recirculation installations, operating conditions should not exceed 140°F (60°C) at 80 psi (5.5 bar) in accordance with ASTM F2023. For additional information regarding application-specific temperature and pressure ratings, refer to the Uponor PEX Piping Systems Design and Installation Manual.



Nom de la pièce	Numéro de pièce	End Type 1	End Type 2
ProPEX LF Brass Female Threaded Adapter, 1/2" PEX x 3/4" NPT	LF4575075	ProPEX 1/2"	FNPT 3/4"
ProPEX LF Brass Female Threaded Adapter, 3/4" PEX x 3/4" NPT	LF4577575	ProPEX 3/4"	FNPT 3/4"
ProPEX LF Brass Female Threaded Adapter, 1" PEX x 1" NPT	LF4571010	ProPEX 1"	FNPT 1"
ProPEX LF Brass Female Threaded Adapter, 1 1/4" PEX x 1 1/4" NPT	LF4571313	ProPEX 1-1/4"	FNPT 1-1/4"
ProPEX LF Brass Female Threaded Adapter, 1/2" PEX x 1/2" NPT	LF4575050	ProPEX 1/2"	FNPT 1/2"
ProPEX LF Brass Female Threaded Adapter, 3/4" PEX x 1" NPT	LF4577510	ProPEX 3/4"	FNPT 1"
ProPEX LF Brass Female Threaded Adapter, 1 1/2" PEX x 1 1/2" NPT	LF4571515	ProPEX 1-1/2"	FNPT 1-1/2"
ProPEX LF Brass Female Threaded Adapter, 2" PEX x 2" NPT	LF4572020	ProPEX 2"	FNPT 2"

Nom de la pièce	Numéro de pièce	Les codes	Normes	Annonces
Adaptateurs filetés femelles en laiton sans plomb (LF) ProPEX	All	UPC IBC IRC IPC NPC of Canada UMC NSPC IMC	ASTM F877 NSF/ANSI/CAN 372 ASTM F1960 CSA B137.5 NSF/ANSI/CAN 61 NSF/ANSI 14	IAPMO-ES ICC-ES-PMG U.P.Code
In addition, the following parts have additional codes, standards, or listings:				
ProPEX LF Brass Female Threaded Adapter, 1/2" PEX x 3/4" NPT	LF4575075			cNSFus-pw-G
ProPEX LF Brass Female Threaded Adapter, 3/4" PEX x 3/4" NPT	LF4577575		UL 1821	cNSFus-pw-fs-G
ProPEX LF Brass Female Threaded Adapter, 1" PEX x 1" NPT	LF4571010		UL 1821	cNSFus-pw-fs-G
ProPEX LF Brass Female Threaded Adapter, 1 1/4" PEX x 1 1/4" NPT	LF4571313		UL 1821	cNSFus-pw-fs-G
ProPEX LF Brass Female Threaded Adapter, 1/2" PEX x 1/2" NPT	LF4575050			cNSFus-pw-G
ProPEX LF Brass Female Threaded Adapter, 3/4" PEX x 1" NPT	LF4577510			cNSFus-pw-G
ProPEX LF Brass Female Threaded Adapter, 1 1/2" PEX x 1 1/2" NPT	LF4571515			cNSFus-pw-G
ProPEX LF Brass Female Threaded Adapter, 2" PEX x 2" NPT	LF4572020			cNSFus-pw-G

L'installation

Use the appropriate ProPEX Ring for PEX-a tubing. Refer to the Uponor AquaPEX® Professional Plumbing Installation Guide, AquaSAFE™ Residential Fire Sprinkler Installation Guide or Uponor Radiant Installation Handbook for additional information.

Applications connexes

PEX-a Plumbing Systems
Radiant Heating and Cooling Systems
Permafrost Protection Systems
Turf Conditioning Systems
AquaSAFE™ Fire Safety Systems

Notes de bas de page

Coordonnées de la personne-ressource

Uponor Inc.
5925 148th Street West
Apple Valley, MN 55124
T 800.321.4739
F 952.891.2008

Uponor Ltd.
6510 Kennedy Road
Mississauga, ON L5T 2X4
T 888.594.7726
F 800.638.9517