

# Raccords ProPEX en laiton sans plomb (LF) à polyéthylène (PE)



## Renseignements sur le projet

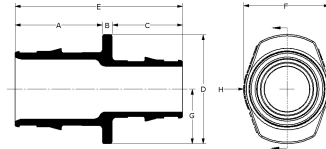
Nom du poste :	Lieu :
Ingénieur :	Date de soumission:
Entrepreneur :	Présentée par:
Représentant du fabricant :	Approuvé par :

## Données techniques

End type 1	ProPEX 1"
End type 2	PE 1"
Temp/pressure ratings	73 °F (23 °C) at 160 psi (11 bar) 180 °F (82 °C) at 100 psi (6.9 bar) 200 °F (93 °C) at 80 psi (5.5 bar)
Prop 65 label required?	Yes

## Informations sur le produit et utilisation de l'application

ProPEX® Lead-free Brass to Polyethylene (PE) Coupling transitions PE pipe to Uponor AquaPEX® tubing. 1 Approved for use in hot and cold domestic potable water systems and radiant heating systems, these couplings are also safe for direct burial in soil. Note: This product does not include the crimp ring for the PE side of the coupling.



Nom de la pièce	Numéro de pièce	A [inch]	B [inch]	C [inch]	D [inch]	E [inch]	F [inch]	G [inch]	H [inch]	Weight per UOM [lbs/UOM]
ProPEX LF Brass to PE Coupling, 1" PEX x 1" PE	LF4591010	1.181	0.125	1.188	1.36	2.494	1.36	0.68	0.68	0.2

## L'installation

Use the appropriate ProPEX Ring (sold separately) for connecting PEX tubing. Use crimp ring to secure the PE tubing to the fitting. Refer to the AquaPEX Professional Plumbing Installation Guide or the Radiant Floor Heating Installation Handbook for additional information.

## Applications connexes

- PEX-a Plumbing Systems
- Radiant Heating and Cooling Systems
- Permafrost Protection Systems
- Turf Conditioning Systems

Les codes	Normes	Annonces
UPC IBC IRC IPC NPC of Canada UMC NSPC IMC	NSF-372 ASTM F877 ASTM F1960 CSA B137.5 NSF-61 NSF-14	IAPMO-ES ICC-ES-PMG cNSFus-pw-G U.P.Code

## Notes de bas de page

## Coordonnées de la personne-ressource

Uponor Inc.  
5925 148th Street West  
Apple Valley, MN 55124  
T 800.321.4739  
F 952.891.2008

Uponor Ltd.  
6510 Kennedy Road  
Mississauga, ON L5T 2X4  
T 888.594.7726  
F 800.638.9517