

Tés multivoies ouverts en EP de type commercial

Renseignements sur le projet

| | |
|-----------------------------|---------------------|
| Nom du poste : | Lieu : |
| Ingénieur : | Date de soumission: |
| Entrepreneur : | Présentée par: |
| Représentant du fabricant : | Approuvé par : |

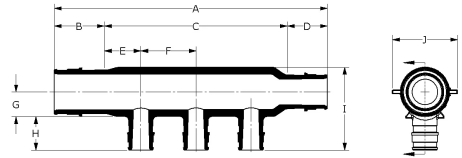
Données techniques

| | |
|-----------------------|--|
| Material | Engineered Polymer |
| Loop Cv | 9.2 Cv |
| Temp/pressure ratings | 73 °F (23 °C) at 160 psi (11 bar) 180 °F (82 °C) at 100 psi (6.9 bar) 200 °F (93 °C) at 80 psi (5.5 bar) |

Informations sur le produit et utilisation de l'application

Commercial engineered polymer (EP) flow-through multi-port tees feature 1/4" or 2" ProPEX® inlets with 3/4" or 1" ProPEX branch outlets.1 The tees are made of engineered polymer (EP), a high-performance material used in demanding, hot-water applications.

Note: Temperature and pressure ratings stated are hydrostatic ratings. For domestic hot-water (DHW) and DHW recirculation installations, operating conditions should not exceed 140°F (60°C) at 80 psi (5.5 bar) in accordance with ASTM F2023. For additional information regarding application-specific temperature and pressure ratings, refer to the Uponor PEX Piping Systems Design and Installation Manual.



| Nom de la pièce | Numéro de pièce | A [inch] | B [inch] | C [inch] | D [inch] | E [inch] | F [inch] | G [inch] | H [inch] | I [inch] | J [inch] |
|--|-----------------|----------|----------|----------|----------|----------|----------|----------|----------|----------|----------|
| EP Flow-through Multi-port Tee, 3 (3/4") outlets, 1 1/4" x 1 1/4" ProPEX | Q2231373 | 8.19 | 1.445 | 5.3 | 1.445 | 0.9 | 1.75 | 0.7 | 0.955 | 2.336 | 1.82 |
| EP Flow-through Multi-port Tee, 3 (1") outlets, 2" x 2" ProPEX | Q2232102 | 10.554 | 2.157 | 6.24 | 2.157 | 1.12 | 2.0 | 1.06 | 1.191 | 3.291 | 2.82 |

| Nom de la pièce | Numéro de pièce | Cv Through | Equivalent length branch [ft] | Equivalent length through [ft] | End Type 1 | End Type 2 | End Type 3 | Weight per UOM [lbs/UOM] |
|--|-----------------|------------|-------------------------------|--------------------------------|---------------|---------------|-------------|--------------------------|
| EP Flow-through Multi-port Tee, 3 (3/4") outlets, 1 1/4" x 1 1/4" ProPEX | Q2231373 | 42.5 | 4.87 | 2.02 | ProPEX 1-1/4" | ProPEX 1-1/4" | ProPEX 3/4" | 0.22 |
| EP Flow-through Multi-port Tee, 3 (1") outlets, 2" x 2" ProPEX | Q2232102 | 99 | - | - | ProPEX 2" | ProPEX 2" | ProPEX 1" | - |

| Nom de la pièce | Numéro de pièce | Les codes | Normes | Annonces |
|---|-----------------|--|---|---|
| Tés multivoies ouverts en EP de type commercial | All | UPC IBC IRC IPC NPC of Canada UMC NSPC IMC | ASTM E814 ULC S115 ASTM F877 ASTM F1960 CSA B137.5 ULC S102.2 ASTM E119 UL 263 ULC S101 | IAPMO-ES HUD MR 1269 ICC-ES-PMG cNSFus-pw UL U.P.Code cQAlus P321 |

In addition, the following parts have additional codes, standards, or listings:

| | | |
|--|----------|-----------------------------|
| EP Flow-through Multi-port Tee, 3 (3/4") outlets, 1 1/4" x 1 1/4" ProPEX | Q2231373 | NSF/ANSI/CAN 61 NSF/ANSI 14 |
| EP Flow-through Multi-port Tee, 3 (1") outlets, 2" x 2" ProPEX | Q2232102 | NSF-61 NSF-14 |

L'installation

Properly mount the multi-port tee by securing all adjoining PEX pipes to the framing or support structure within 6" of each ProPEX connection. For more information, refer to the Uponor Piping Systems Installation Guide.

Applications connexes

PEX-a Plumbing Systems

Notes de bas de page

Coordonnées de la personne-ressource

Uponor Inc.
5925 148th Street West
Apple Valley, MN 55124
T 800.321.4739
F 952.891.2008

Uponor Ltd.
6510 Kennedy Road
Mississauga, ON L5T 2X4
T 888.594.7726
F 800.638.9517