

Tés multivoies à embranchements en EP

Renseignements sur le projet

Nom du poste :	Lieu :
Ingénieur :	Date de soumission:
Entrepreneur :	Présentée par:
Représentant du fabricant :	Approuvé par :

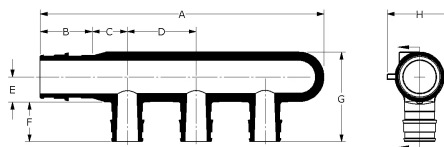
Données techniques

Material	Engineered Polymer
End type 2	ProPEX 1/2"
Temp/pressure ratings	73 °F (23 °C) at 160 psi (11 bar) 180 °F (82 °C) at 100 psi (6.9 bar) 200 °F (93 °C) at 80 psi (5.5 bar)

Informations sur le produit et utilisation de l'application

Engineered polymer (EP) branch multi-port tees are used in hot and cold domestic potable water distribution systems. The multi-port tees are available with 3/4" or 1" ProPEX® inlets and 1/2" ProPEX outlets. 1

Note: Temperature and pressure ratings stated are hydrostatic ratings. For domestic hot-water (DHW) and DHW recirculation installations, operating conditions should not exceed 140°F (60°C) at 80 psi (5.5 bar) in accordance with ASTM F2023. For additional information regarding application-specific temperature and pressure ratings, refer to the Uponor PEX Piping Systems Design and Installation Manual.



Nom de la pièce	Numéro de pièce	A [inch]	B [inch]	C [inch]	D [inch]	E [inch]	F [inch]	G [inch]	H [inch]	End Type 1	Prop 65 label required?
3/4" EP Branch Multi-port Tee, 3 (1/2") outlets	Q2237550	4.43	0.955	0.625	1.25	0.48	0.719	1.639	1.22	ProPEX 3/4"	-
3/4" EP Branch Multi-port Tee, 4 (1/2") outlets	Q2247550	5.73	0.955	0.625	1.25	0.48	0.719	1.639	1.22	ProPEX 3/4"	-
1" EP Branch Multi-port Tee, 4 (1/2") outlets	Q2241050	6.691	1.191	0.775	1.25	0.6	0.719	1.879	1.48	ProPEX 1"	-
3/4" EP Branch Multi-port Tee, 6 (1/2") outlets	Q2267550	8.23	0.955	0.625	1.25	0.48	0.719	1.639	1.22	ProPEX 3/4"	No
1" EP Branch Multi-port Tee, 6 (1/2") outlets	Q2261050	9.251	1.191	0.625	1.25	0.57	0.719	2.009	1.441	ProPEX 1"	-

Nom de la pièce	Numéro de pièce	Weight per UOM [lbs/UOM]
3/4" EP Branch Multi-port Tee, 3 (1/2") outlets	Q2237550	0.1
3/4" EP Branch Multi-port Tee, 4 (1/2") outlets	Q2247550	0.13
1" EP Branch Multi-port Tee, 4 (1/2") outlets	Q2241050	-
3/4" EP Branch Multi-port Tee, 6 (1/2") outlets	Q2267550	0.18
1" EP Branch Multi-port Tee, 6 (1/2") outlets	Q2261050	0

Nom de la pièce	Numéro de pièce	Les codes	Normes	Annonces
Tés multivoies à embranchements en EP	All	UPC IBC IRC IPC NPC of Canada UMC NSPC IMC	ASTM E814 ULC S115 ASTM F877 ASTM F1960 CSA B137.5 ULC S102.2 ASTM E119 UL 263 ULC S101	IAPMO-ES HUD MR 1269 ICC-ES-PMG cNSFus-pw UL U.P.Code cQAlus P321

In addition, the following parts have additional codes, standards, or listings:

3/4" EP Branch Multi-port Tee, 3 (1/2") outlets	Q2237550	NSF/ANSI/CAN 61 NSF/ANSI 14
3/4" EP Branch Multi-port Tee, 4 (1/2") outlets	Q2247550	NSF-61 NSF-14
1" EP Branch Multi-port Tee, 4 (1/2") outlets	Q2241050	NSF/ANSI/CAN 61 NSF/ANSI 14
3/4" EP Branch Multi-port Tee, 6 (1/2") outlets	Q2267550	NSF/ANSI/CAN 61 NSF/ANSI 14
1" EP Branch Multi-port Tee, 6 (1/2") outlets	Q2261050	NSF/ANSI/CAN 61 NSF/ANSI 14

L'installation

For a mounting bracket, use any product designed to mount 1" copper pipe for the 3/4" multi-port tee or 1 1/4" copper pipe for the 1" multi-port tee. For more information, refer to the Uponor Piping Systems Installation Guide.

Applications connexes

PEX-a Plumbing Systems

Uponor Inc.
5925 148th Street West
Apple Valley, MN 55124
T 800.321.4739
F 952.891.2008

Uponor Ltd.
6510 Kennedy Road
Mississauga, ON L5T 2X4
T 888.594.7726
F 800.638.9517
