

Adaptateurs ProPEX de raccord soudé à l'étain en laiton

Renseignements sur le projet

Nom du poste :	Lieu :
Ingénieur :	Date de soumission:
Entrepreneur :	Présentée par:
Représentant du fabricant :	Approuvé par :

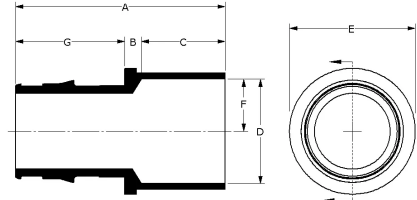
Données techniques

Temp/pressure ratings	73 °F (23 °C) at 160 psi (11 bar) 180 °F (82 °C) at 100 psi (6.9 bar) 200 °F (93 °C) at 80 psi (5.5 bar)
Prop 65 label required?	Yes

Informations sur le produit et utilisation de l'application

ProPEX® brass sweat adapters transition Uponor PEX pipe to copper pipe for use in hydronic heating and cooling systems. 1 One end of the adapter is manufactured with the Uponor ProPEX fitting for connection to Wirsbo hePEX™ pipe and the other end is manufactured to adapt copper sweat connections. These adapters are not safe for direct burial in soil. Note: Not for potable use.

Note: Temperature and pressure ratings stated are hydrostatic ratings. For domestic hot-water (DHW) and DHW recirculation installations, operating conditions should not exceed 140°F (60°C) at 80 psi (5.5 bar) in accordance with ASTM F2023. For additional information regarding application-specific temperature and pressure ratings, refer to the Uponor PEX Piping Systems Design and Installation Manual.



Nom de la pièce	Numéro de pièce	A [inch]	B [inch]	C [inch]	D [inch]	E [inch]	F [inch]	G [inch]	Cv	Weight per UOM [lbs/UOM]	Equivalent length through [ft]
ProPEX LF Brass Sweat Adapter, 3" PEX x 3" Copper	LF4513030	5.33	0.29	1.66	3.13	3.79	1.565	3.38	189.1	2.85	8.79
ProPEX LF Brass Sweat Adapter, 3/8" PEX x 1/2" Copper	LF4513850	1.32	0.229	0.5	0.629	0.719	0.315	0.591	5.7	0.05	2
ProPEX LF Brass Sweat Adapter, 1/2" PEX x 3/4" Copper	LF4515075	1.634	0.175	0.75	0.879	0.987	0.439	0.709	5.1	0.09	2.7
ProPEX Brass Sweat Adapter, 5/8" PEX x 1/2" Copper	Q4516350	1.491	0.125	0.5	0.629	0.94	0.315	0.866	-	0.11	-
ProPEX Brass Sweat Adapter, 5/8" PEX x 3/4" Copper	Q4516375	1.866	0.25	0.75	0.879	1.04	0.439	0.866	-	0.16	-
ProPEX Brass Sweat Adapter, 1" PEX x 1" Copper	Q5511010	2.256	0.165	0.91	1.132	1.36	0.566	1.181	22.1	0.31	2.4
ProPEX Brass Sweat Adapter, 1 1/4" PEX x 1 1/4" Copper	Q5511313	2.6	0.185	0.97	1.382	1.72	0.691	1.445	34	0.4	3.9
ProPEX Brass Sweat Adapter, 1 1/2" PEX x 1 1/2" Copper	Q5511515	3.049	0.255	1.09	1.633	1.9	0.817	1.704	45.5	0.65	4.3
ProPEX Brass Sweat Adapter, 2" PEX x 2" Copper	Q5512020	3.797	0.31	1.34	2.133	2.68	1.067	2.147	83.6	2	5.3
ProPEX Brass Sweat Adapter, 1/2" PEX x 1/2" Copper	Q5515050	1.368	0.159	0.5	0.631	0.77	0.315	0.709	5.7	0.06	2
ProPEX Brass Sweat Adapter, 3/4" PEX x 1" Copper	Q5517510	2.07	0.215	0.91	1.132	1.26	0.566	0.945	10.9	0.3	3.7
ProPEX Brass Sweat Adapter, 3/4" PEX x 1/2" Copper	Q5517550	1.675	0.23	0.5	0.631	1.1	0.315	0.945	8.8	0.1	1.4
ProPEX Brass Sweat Adapter, 3/4" PEX x 3/4" Copper	Q5517575	1.845	0.15	0.75	0.881	1.1	0.441	0.945	13.4	0.15	2.1

Nom de la pièce	Numéro de pièce	Material group	End Type 1	End Type 2
ProPEX LF Brass Sweat Adapter, 3" PEX x 3" Copper	LF4513030	-	ProPEX 3"	Sweat 3"
ProPEX LF Brass Sweat Adapter, 3/8" PEX x 1/2" Copper	LF4513850	-	ProPEX 3/8"	Sweat 1/2"
ProPEX LF Brass Sweat Adapter, 1/2" PEX x 3/4" Copper	LF4515075	-	ProPEX 1/2"	Sweat 3/4"
ProPEX Brass Sweat Adapter, 5/8" PEX x 1/2" Copper	Q4516350	-	ProPEX 5/8"	Sweat 1/2"
ProPEX Brass Sweat Adapter, 5/8" PEX x 3/4" Copper	Q4516375	-	ProPEX 5/8"	Sweat 3/4"
ProPEX Brass Sweat Adapter, 1" PEX x 1" Copper	Q5511010	-	ProPEX 1"	Sweat 1"

ProPEX Brass Sweat Adapter, 1 1/4" PEX x 1 1/4" Copper	Q5511313	-	ProPEX 1-1/4"	Sweat 1-1/4"
ProPEX Brass Sweat Adapter, 1 1/2" PEX x 1 1/2" Copper	Q5511515	-	ProPEX 1-1/2"	Sweat 1-1/2"
ProPEX Brass Sweat Adapter, 2" PEX x 2" Copper	Q5512020	-	ProPEX 2"	Sweat 2"
ProPEX Brass Sweat Adapter, 1/2" PEX x 1/2" Copper	Q5515050	-	ProPEX 1/2"	Sweat 1/2"
ProPEX Brass Sweat Adapter, 3/4" PEX x 1" Copper	Q5517510	-	ProPEX 3/4"	Sweat 1"
ProPEX Brass Sweat Adapter, 3/4" PEX x 1/2" Copper	Q5517550	-	ProPEX 3/4"	Sweat 1/2"
ProPEX Brass Sweat Adapter, 3/4" PEX x 3/4" Copper	Q5517575	-	ProPEX 3/4"	Sweat 3/4"

L'installation	Applications connexes
Use the appropriate Uponor ProPEX ring for the pipe (sold separately). Do not solder within 18" of the ProPEX fitting. Refer to the Radiant Floor Heating Installation Handbook, Complete Design Assistance Manual (CDAM), or the Hydronic Piping Design Assistance Manual (HPDAM) for additional information.	<ul style="list-style-type: none"> Radiant Heating and Cooling Systems Permafrost Protection Systems Turf Conditioning Systems Hydronic Piping Systems

Les codes	Normes	Annonces
IMC IBC IRC NPC of Canada UMC*	ASTM F1960 CSA B137.5 NSF-14 ASTM F877*	IAPMO-ES ICC-ES-PMG cNSFus-rfh*

Notes de bas de page	Coordonnées de la personne-ressource	
-	Uponor Inc.	Uponor Ltd.
	5925 148th Street West	6510 Kennedy Road
	Apple Valley, MN 55124	Mississauga, ON L5T 2X4
	T 800.321.4739	T 888.594.7726
	F 952.891.2008	F 800.638.9517
* Certaines SKU de cette famille ont des codes, des normes ou des listes supplémentaires. Veuillez consulter uponor.com pour obtenir des renseignements complets.		