

# Raccords ProPEX en EP

## Renseignements sur le projet

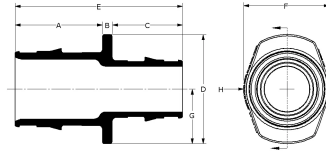
Nom du poste :	Lieu :
Ingénieur :	Date de soumission:
Entrepreneur :	Présentée par:
Représentant du fabricant :	Approuvé par :

## Données techniques

Material	Engineered Polymer
Temp/pressure ratings	73 °F (23 °C) at 160 psi (11 bar) 180 °F (82 °C) at 100 psi (6.9 bar) 200 °F (93 °C) at 80 psi (5.5 bar)

## Informations sur le produit et utilisation de l'application

ProPEX® engineered polymer (EP) coupling is available for use in hot and cold domestic potable water distribution, residential fire safety and radiant heating and cooling systems. Each end of the coupling is manufactured with an Uponor ProPEX fitting for connections to Uponor AquaPEX® or Wirsbo hePEX™ tubing.<sup>1</sup>



Nom de la pièce	Numéro de pièce	A [inch]	B [inch]	C [inch]	D [inch]	E [inch]	F [inch]	G [inch]	H [inch]	Cv	Weight per UOM [lbs/UOM]
ProPEX EP Coupling, 1" PEX x 1" PEX	Q4771010	1.191	0.125	1.191	1.48	2.507	1.165	0.74	0.59	33.8	0.04
ProPEX EP Coupling, 1 1/4" PEX x 3/4" PEX	Q4771307	1.459	0.15	0.963	1.74	2.573	1.38	0.87	0.69	10.9	0.05
ProPEX EP Coupling, 1 1/4" PEX x 1" PEX	Q4771310	1.459	0.15	1.198	1.74	2.807	1.38	0.87	0.69	22.3	0.06
ProPEX EP Coupling, 1 1/4" PEX x 1 1/4" PEX	Q4771313	1.459	0.15	1.459	1.74	3.069	1.38	0.87	0.69	53.3	0.07
ProPEX EP Coupling, 1 1/2" PEX x 3/4" PEX	Q4771507	1.719	0.15	0.965	1.92	2.834	1.53	0.96	0.765	10.8	0.07
ProPEX EP Coupling, 1 1/2" PEX x 1" PEX	Q4771510	1.719	0.15	1.178	1.92	3.048	1.52	0.96	0.76	19	0.08
ProPEX EP Coupling, 1 1/2" PEX x 1 1/4" PEX	Q4771513	1.719	0.15	1.461	1.92	3.33	1.53	0.96	0.765	33.9	0.09
ProPEX EP Coupling, 1 1/2" PEX x 1 1/2" PEX	Q4771515	1.719	0.15	1.719	1.92	3.588	1.53	0.96	0.765	69.5	0.1
ProPEX EP Coupling, 2" PEX x 1 1/2" PEX	Q4772015	2.164	0.25	1.726	2.7	4.14	2.2	1.35	1.1	45.2	0.19
ProPEX EP Coupling, 2" PEX x 2" PEX	Q4772020	2.164	0.25	2.164	2.7	4.578	2.2	1.35	1.1	107.8	0.24
ProPEX EP Coupling, 2 1/2" PEX x 1 1/4" PEX	Q4772513	2.84	0.257	1.469	3.6	4.566	2.8	1.8	1.4	29.3	0.34
ProPEX EP Coupling, 2 1/2" PEX x 1 1/2" PEX	Q4772515	2.84	0.25	1.734	3.6	4.824	2.8	1.82	1.4	35.9	0.35
ProPEX EP Coupling, 2 1/2" PEX x 2" PEX	Q4772520	2.84	0.25	2.172	3.6	5.262	2.8	1.82	1.4	82.6	0.4
ProPEX EP Coupling, 2 1/2" PEX x 2 1/2" PEX	Q4772525	2.84	0.25	2.84	3.6	5.931	2.8	1.82	1.4	219.1	0.51
ProPEX EP Coupling, 3" PEX x 2" PEX	Q4773020	3.391	0.25	2.177	4.2	5.819	3.3	2.12	1.65	73.4	0.6
ProPEX EP Coupling, 3" PEX x 2 1/2" PEX	Q4773025	3.391	0.25	2.846	4.2	6.487	3.3	2.12	1.65	136.2	0.71
ProPEX EP Coupling, 3" PEX x 3" PEX	Q4773030	3.391	0.25	3.391	4.2	7.033	3.3	2.12	1.65	320.6	0.85
ProPEX EP Coupling, 3/8" PEX x 3/8" PEX	Q4773838	0.601	0.125	0.601	0.631	1.327	0.631	0.315	0.315	-	0.01
ProPEX EP Coupling, 1/2" PEX x 1/2" PEX	Q4775050	0.722	0.125	0.722	0.87	1.569	0.695	0.435	0.348	8.3	0.01
ProPEX EP Coupling, 1/2" PEX x 3/4" PEX	Q4775075	0.723	0.117	0.959	1.22	1.799	0.98	0.61	0.49	5.2	0.03
ProPEX EP Coupling, 5/8" PEX X 5/8" PEX	Q4776363	0.879	0.119	0.879	1.01	1.877	0.88	0.505	0.44	-	0.01
ProPEX EP Coupling, 3/4" PEX x 1" PEX	Q4777510	0.961	0.125	1.19	1.48	2.276	1.165	0.74	0.59	12.5	0.04
ProPEX EP Coupling, 3/4" PEX x 3/4" PEX	Q4777575	0.955	0.125	0.955	1.22	2.035	0.965	0.61	0.49	19	0.02

Nom de la pièce	Numéro de pièce	Equivalent length through [ft]	End Type 1	End Type 2
ProPEX EP Coupling, 1" PEX x 1" PEX	Q4771010	0.9	ProPEX 1"	ProPEX 1"

ProPEX EP Coupling, 1 1/4" PEX x 3/4" PEX	Q4771307	3.6	ProPEX 1-1/4"	ProPEX 3/4"
ProPEX EP Coupling, 1 1/4" PEX x 1" PEX	Q4771310	2.6	ProPEX 1-1/4"	ProPEX 1"
ProPEX EP Coupling, 1 1/4" PEX x 1 1/4" PEX	Q4771313	1.1	ProPEX 1-1/4"	ProPEX 1-1/4"
ProPEX EP Coupling, 1 1/2" PEX x 3/4" PEX	Q4771507	3.5	ProPEX 1-1/2"	ProPEX 3/4"
ProPEX EP Coupling, 1 1/2" PEX x 1" PEX	Q4771510	4.3	ProPEX 1-1/2"	ProPEX 1"
ProPEX EP Coupling, 1 1/2" PEX x 1 1/4" PEX	Q4771513	3.7	ProPEX 1-1/2"	ProPEX 1-1/4"
ProPEX EP Coupling, 1 1/2" PEX x 1 1/2" PEX	Q4771515	1.4	ProPEX 1-1/2"	ProPEX 1-1/2"
ProPEX EP Coupling, 2" PEX x 1 1/2" PEX	Q4772015	4.59	ProPEX 2"	ProPEX 1-1/2"
ProPEX EP Coupling, 2" PEX x 2" PEX	Q4772020	2.7	ProPEX 2"	ProPEX 2"
ProPEX EP Coupling, 2 1/2" PEX x 1 1/4" PEX	Q4772513	5.4	ProPEX 2-1/2"	ProPEX 1-1/4"
ProPEX EP Coupling, 2 1/2" PEX x 1 1/2" PEX	Q4772515	7.5	ProPEX 2-1/2"	ProPEX 1-1/2"
ProPEX EP Coupling, 2 1/2" PEX x 2" PEX	Q4772520	5.4	ProPEX 2-1/2"	ProPEX 2"
ProPEX EP Coupling, 2 1/2" PEX x 2 1/2" PEX	Q4772525	1.7	ProPEX 2-1/2"	ProPEX 2-1/2"
ProPEX EP Coupling, 3" PEX x 2" PEX	Q4773020	7.2	ProPEX 3"	ProPEX 2"
ProPEX EP Coupling, 3" PEX x 2 1/2" PEX	Q4773025	7.1	ProPEX 3"	ProPEX 2-1/2"
ProPEX EP Coupling, 3" PEX x 3" PEX	Q4773030	1.9	ProPEX 3"	ProPEX 3"
ProPEX EP Coupling, 3/8" PEX x 3/8" PEX	Q4773838	0.8	ProPEX 3/8"	ProPEX 3/8"
ProPEX EP Coupling, 1/2" PEX x 1/2" PEX	Q4775050	0.8	ProPEX 1/2"	ProPEX 1/2"
ProPEX EP Coupling, 1/2" PEX x 3/4" PEX	Q4775075	2.6	ProPEX 1/2"	ProPEX 3/4"
ProPEX EP Coupling, 5/8" PEX X 5/8" PEX	Q4776363	2.7	ProPEX 5/8"	ProPEX 5/8"
ProPEX EP Coupling, 3/4" PEX x 1" PEX	Q4777510	2.7	ProPEX 3/4"	ProPEX 1"
ProPEX EP Coupling, 3/4" PEX x 3/4" PEX	Q4777575	0.9	ProPEX 3/4"	ProPEX 3/4"

#### L'installation

Use ProPEX rings to make the fitting. Refer to the Uponor Piping Pocket Guide, Radiant Floor Heating Installation Handbook or AquaSAFE™ Residential Fire Sprinkler Installation Guide for more information.

#### Applications connexes

PEX-a Plumbing Systems  
Hydronic Radiant Heating and Cooling Systems  
Permafrost Protection Systems  
Turf Conditioning Systems  
AquaSAFE™ Fire Safety Systems

#### Les codes

IMC|UPC|IBC|IRC|IPC|NPC of Canada|UMC|NSPC

#### Normes

ASTM F1960|ASTM E119|UL 263|ASTM E84|ASTM E814|ULC S115|ASTM F877|CSA B137.5|ULC S102.2|NSF-61|ULC S101|NSF-14\*

#### Annonces

IAPMO-ES|ICC-ES-PMG|cNSFus-pw|UL|U.P.Code|cQAlus P321|HUD MR 1269\*

#### Notes de bas de page

-  
\* Certaines SKU de cette famille ont des codes, des normes ou des listes supplémentaires. Veuillez consulter uponor.com pour obtenir des renseignements complets.

#### Coordonnées de la personne-ressource

Uponor Inc.  
5925 148th Street West  
Apple Valley, MN 55124  
T 800.321.4739  
F 952.891.2008

Uponor Ltd.  
6510 Kennedy Road  
Mississauga, ON L5T 2X4  
T 888.594.7726  
F 800.638.9517