

Raccords ProPEX en EP

Renseignements sur le projet

Nom du poste :	Lieu :
Ingénieur :	Date de soumission:
Entrepreneur :	Présentée par:
Représentant du fabricant :	Approuvé par :

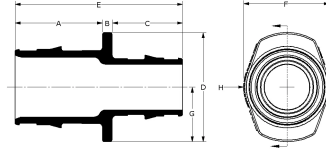
Données techniques

Material	Engineered Polymer
Temp/pressure ratings	73 °F (23 °C) at 160 psi (11 bar) 180 °F (82 °C) at 100 psi (6.9 bar) 200 °F (93 °C) at 80 psi (5.5 bar)

Informations sur le produit et utilisation de l'application

ProPEX® engineered polymer (EP) coupling is available for use in hot and cold domestic potable water distribution, residential fire safety and radiant heating and cooling systems. Each end of the coupling is manufactured with an Uponor ProPEX fitting for connections to Uponor AquaPEX® or Wirsbo hePEX™ tubing.¹

Note: Temperature and pressure ratings stated are hydrostatic ratings. For domestic hot-water (DHW) and DHW recirculation installations, operating conditions should not exceed 140°F (60°C) at 80 psi (5.5 bar) in accordance with ASTM F2023. For additional information regarding application-specific temperature and pressure ratings, refer to the Uponor PEX Piping Systems Design and Installation Manual.



Nom de la pièce	Numéro de pièce	A [mm]	B [mm]	C [mm]	D [mm]	E [mm]	F [mm]	G [mm]	H [mm]	Weight per UOM [kg/UOM]
ProPEX EP Coupling, 3/8" PEX x 3/8" PEX	Q4773838	15.27	3.18	15.27	16.03	33.71	16.03	8.01	8.01	0.005
ProPEX EP Coupling, 1/2" PEX x 1/2" PEX	Q4775050	18.33	3.18	18.33	22.10	39.84	17.65	11.05	8.83	0.005
ProPEX EP Coupling, 1/2" PEX x 3/4" PEX	Q4775075	18.36	2.98	24.36	30.99	45.69	24.89	15.49	12.45	0.014
ProPEX EP Coupling, 5/8" PEX X 5/8" PEX	Q4776363	22.32	3.03	22.32	25.65	47.68	22.35	12.83	11.18	0.005
ProPEX EP Coupling, 3/4" PEX x 3/4" PEX	Q4777575	24.26	3.18	24.26	30.99	51.69	24.51	15.49	12.45	0.009
ProPEX EP Coupling, 3/4" PEX x 1" PEX	Q4777510	24.41	3.18	30.23	37.59	57.82	29.59	18.80	14.99	0.018
ProPEX EP Coupling, 1" PEX x 1" PEX	Q4771010	30.25	3.18	30.25	37.59	63.68	29.59	18.80	14.99	0.018
ProPEX EP Coupling, 1 1/4" PEX x 3/4" PEX	Q4771307	37.07	3.81	24.47	44.20	65.35	35.05	22.10	17.53	0.023
ProPEX EP Coupling, 1 1/4" PEX x 1" PEX	Q4771310	37.07	3.81	30.42	44.20	71.30	35.05	22.10	17.53	0.027
ProPEX EP Coupling, 1 1/4" PEX x 1 1/4" PEX	Q4771313	37.07	3.81	37.07	44.20	77.95	35.05	22.10	17.53	0.032
ProPEX EP Coupling, 1 1/2" PEX x 3/4" PEX	Q4771507	43.66	3.81	24.51	48.77	71.99	38.86	24.38	19.43	0.032
ProPEX EP Coupling, 1 1/2" PEX x 1" PEX	Q4771510	43.66	3.81	29.93	48.77	77.41	38.61	24.38	19.30	0.036
ProPEX EP Coupling, 1 1/2" PEX x 1 1/4" PEX	Q4771513	43.66	3.81	37.11	48.77	84.59	38.86	24.38	19.43	0.041
ProPEX EP Coupling, 1 1/2" PEX x 1 1/2" PEX	Q4771515	43.66	3.81	43.66	48.77	91.14	38.86	24.38	19.42	0.045
ProPEX EP Coupling, 2" PEX x 1 1/2" PEX	Q4772015	54.97	6.35	43.84	68.58	105.16	55.88	34.29	27.94	0.086
ProPEX EP Coupling, 2" PEX x 2" PEX	Q4772020	54.97	6.35	54.97	68.58	116.29	55.88	34.29	27.94	0.109
ProPEX EP Coupling, 2 1/2" PEX x 1 1/4" PEX	Q4772513	72.14	6.53	37.31	91.44	115.98	71.12	45.72	35.56	0.154
ProPEX EP Coupling, 2 1/2" PEX x 1 1/2" PEX	Q4772515	72.14	6.35	44.04	91.44	122.53	71.12	46.23	35.56	0.159
ProPEX EP Coupling, 2 1/2" PEX x 2" PEX	Q4772520	72.14	6.35	55.17	91.44	133.66	71.12	46.23	35.56	0.181
ProPEX EP Coupling, 2 1/2" PEX x 2 1/2" PEX	Q4772525	72.14	6.35	72.14	91.44	150.64	71.12	46.23	35.56	0.231
ProPEX EP Coupling, 3" PEX x 2" PEX	Q4773020	86.14	6.35	55.30	106.68	147.79	83.82	53.85	41.91	0.272
ProPEX EP Coupling, 3" PEX x 2 1/2" PEX	Q4773025	86.14	6.35	72.28	106.68	164.77	83.82	53.85	41.91	0.322
ProPEX EP Coupling, 3" PEX x 3" PEX	Q4773030	86.14	6.35	86.14	106.68	178.63	83.82	53.85	41.91	0.386

Nom de la pièce	Numéro de pièce	Les codes	Normes	Annonces
Raccords ProPEX en EP	All	IMC UPC IBC IRC IPC NPC of Canada UMC NSPC	ASTM F1960 ASTM E119/UL 263 ASTM E84 ASTM E814/ULC S115 ASTM F877 CSA B137.5 ULC S102.2 ULC S101	IAPMO-ES ICC-ES-PMG UL U.P.Code cQAlus P321 HUD MR 1269
In addition, the following parts have additional codes, standards, or listings:				
ProPEX EP Coupling, 3/8" PEX x 3/8" PEX	Q4773838		NSF-61 NSF-14	cNSFus-pw
ProPEX EP Coupling, 1/2" PEX x 1/2" PEX	Q4775050		NSF/ANSI/CAN 61 NSF/ANSI 14	cNSFus-pw
ProPEX EP Coupling, 1/2" PEX x 3/4" PEX	Q4775075		NSF-61 NSF-14	cNSFus-pw
ProPEX EP Coupling, 5/8" PEX X 5/8" PEX	Q4776363		NSF-61 NSF-14	cNSFus-pw
ProPEX EP Coupling, 3/4" PEX x 3/4" PEX	Q4777575		UL 1821 NSF-61 NSF-14	cNSFus-pw-fs
ProPEX EP Coupling, 3/4" PEX x 1" PEX	Q4777510		UL 1821 NSF-61 NSF-14	cNSFus-pw-fs
ProPEX EP Coupling, 1" PEX x 1" PEX	Q4771010		UL 1821 NSF-61 NSF-14	cNSFus-pw-fs
ProPEX EP Coupling, 1 1/4" PEX x 3/4" PEX	Q4771307		UL 1821 NSF-61 NSF-14	cNSFus-pw-fs
ProPEX EP Coupling, 1 1/4" PEX x 1" PEX	Q4771310		UL 1821 NSF-61 NSF-14	cNSFus-pw-fs
ProPEX EP Coupling, 1 1/4" PEX x 1 1/4" PEX	Q4771313		UL 1821 NSF-61 NSF-14	cNSFus-pw-fs
ProPEX EP Coupling, 1 1/2" PEX x 3/4" PEX	Q4771507		NSF-61 NSF-14	cNSFus-pw
ProPEX EP Coupling, 1 1/2" PEX x 1" PEX	Q4771510		NSF-61 NSF-14	cNSFus-pw
ProPEX EP Coupling, 1 1/2" PEX x 1 1/4" PEX	Q4771513		NSF-61 NSF-14	cNSFus-pw
ProPEX EP Coupling, 1 1/2" PEX x 1 1/2" PEX	Q4771515		NSF-61 NSF-14	cNSFus-pw
ProPEX EP Coupling, 2" PEX x 1 1/2" PEX	Q4772015		NSF-61 NSF-14	cNSFus-pw
ProPEX EP Coupling, 2" PEX x 2" PEX	Q4772020		NSF-61 NSF-14	cNSFus-pw
ProPEX EP Coupling, 2 1/2" PEX x 1 1/4" PEX	Q4772513		NSF-61 NSF-14	cNSFus-pw
ProPEX EP Coupling, 2 1/2" PEX x 1 1/2" PEX	Q4772515		NSF-61 NSF-14	cNSFus-pw
ProPEX EP Coupling, 2 1/2" PEX x 2" PEX	Q4772520		NSF-61 NSF-14	cNSFus-pw
ProPEX EP Coupling, 2 1/2" PEX x 2 1/2" PEX	Q4772525		NSF-61 NSF-14	cNSFus-pw
ProPEX EP Coupling, 3" PEX x 2" PEX	Q4773020		NSF-61 NSF-14	cNSFus-pw
ProPEX EP Coupling, 3" PEX x 2 1/2" PEX	Q4773025		NSF-61 NSF-14	cNSFus-pw
ProPEX EP Coupling, 3" PEX x 3" PEX	Q4773030		NSF-61 NSF-14	cNSFus-pw

L'installation

Use ProPEX rings to make the fitting. Refer to the Uponor Piping Pocket Guide, Radiant Floor Heating Installation Handbook or AquaSAFE™ Residential Fire Sprinkler Installation Guide for more information.

Applications connexes

PEX-a Plumbing Systems
Hydronic Radiant Heating and Cooling Systems
Permafrost Protection Systems
Turf Conditioning Systems
AquaSAFE™ Fire Safety Systems

Notes de bas de page

Coordonnées de la personne-ressource

Uponor Inc.
5925 148th Street West
Apple Valley, MN 55124
T 800.321.4739
F 952.891.2008

Uponor Ltd.
6510 Kennedy Road
Mississauga, ON L5T 2X4
T 888.594.7726
F 800.638.9517