

# Adaptateurs filetés femelles ProPEX en laiton

## Renseignements sur le projet

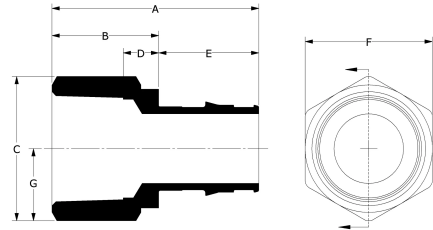
Nom du poste :	Lieu :
Ingénieur :	Date de soumission:
Entrepreneur :	Présentée par:
Représentant du fabricant :	Approuvé par :

## Données techniques

Material	Brass
Temp/pressure ratings	73 °F (23 °C) at 160 psi (11 bar) 180 °F (82 °C) at 100 psi (6.9 bar) 200 °F (93 °C) at 80 psi (5.5 bar)
Prop 65 label required?	Yes

## Informations sur le produit et utilisation de l'application

ProPEX® brass female threaded adapters connect Uponor PEX pipe to female NPT threads. 1 Use the adapters in hydronic heating and cooling systems. One end of the adapter is manufactured with the Uponor ProPEX fitting for connection to Wirsbo hePEX™ pipe; the other end is manufactured to adapt a male thread. These adapters are not safe for direct burial in soil. Note: Not for potable use.



Nom de la pièce	Numéro de pièce	A [inch]	B [inch]	C [inch]	D [inch]	E [inch]	F [inch]	G [inch]	Cv	Equivalent length through [ft]	End Type 1
ProPEX Brass Female Threaded Adapter, 1/2" PEX x 1/2" NPT	Q5575050	1.569	0.86	1.139	0.326	0.709	1.0	0.57	4.8	2.5	ProPEX 1/2"
ProPEX Brass Female Threaded Adapter, 5/8" PEX x 3/4" NPT	Q4576375	1.906	1.04	1.345	0.486	0.866	1.187	-	-	-	ProPEX 5/8"
ProPEX Brass Female Threaded Adapter, 3/4" PEX x 3/4" NPT	Q5577575	1.845	0.9	1.356	0.347	0.945	1.187	0.678	12	2.3	ProPEX 3/4"
ProPEX Brass Female Threaded Adapter, 3/4" PEX x 1" NPT	Q5577510	2.145	1.2	1.717	0.52	0.945	1.5	0.858	10.8	3.6	ProPEX 3/4"
ProPEX Brass Female Threaded Adapter, 1" PEX x 1" NPT	Q5571010	2.381	1.2	1.717	0.52	1.181	1.5	0.858	19.7	3.8	ProPEX 1"
ProPEX Brass Female Threaded Adapter, 1 1/4" PEX x 1 1/4" NPT	Q5571313	2.57	1.125	2.294	0.415	1.445	2.0	1.147	30.8	4.8	ProPEX 1-1/4"
ProPEX Brass Female Threaded Adapter, 1 1/2" PEX x 1 1/2" NPT	Q5571515	2.854	1.15	2.583	0.42	1.704	2.25	1.291	40.9	5.1	ProPEX 1-1/2"
ProPEX Brass Female Threaded Adapter, 2" PEX x 2" NPT	Q5572020	3.547	1.4	3.449	0.703	2.147	3.0	1.724	77.7	5.7	ProPEX 2"

Nom de la pièce	Numéro de pièce	End Type 2	Weight per UOM [lbs/UOM]
ProPEX Brass Female Threaded Adapter, 1/2" PEX x 1/2" NPT	Q5575050	FNPT 1/2"	0.14
ProPEX Brass Female Threaded Adapter, 5/8" PEX x 3/4" NPT	Q4576375	FNPT 3/4"	0.2
ProPEX Brass Female Threaded Adapter, 3/4" PEX x 3/4" NPT	Q5577575	FNPT 3/4"	0.2
ProPEX Brass Female Threaded Adapter, 3/4" PEX x 1" NPT	Q5577510	FNPT 1"	0.4
ProPEX Brass Female Threaded Adapter, 1" PEX x 1" NPT	Q5571010	FNPT 1"	0.4
ProPEX Brass Female Threaded Adapter, 1 1/4" PEX x 1 1/4" NPT	Q5571313	FNPT 1-1/4"	0.67
ProPEX Brass Female Threaded Adapter, 1 1/2" PEX x 1 1/2" NPT	Q5571515	FNPT 1-1/2"	1.2
ProPEX Brass Female Threaded Adapter, 2" PEX x 2" NPT	Q5572020	FNPT 2"	2.2

Nom de la pièce	Numéro de pièce	Les codes	Normes	Annonces
Adaptateurs filetés femelles ProPEX en laiton	All	IMC IBC IRC NPC of Canada UMC	ASTM F1960 CSA B137.5 NSF-14 ASTM F877	IAPMO-ES ICC-ES-PMG cNSFus-rfh

**L'installation**

Use the appropriate ProPEX ring for Uponor PEX pipe (sold separately). Refer to the Uponor Radiant Installation Handbook, Complete Design Assistance Manual (CDAM), or Hydronic Piping Design Assistance Manual (HPDAM) for additional information.

**Applications connexes**

Radiant Heating and Cooling Systems  
Permafrost Protection Systems  
Turf Conditioning Systems  
Hydronic Piping Systems

**Notes de bas de page**

-

**Coordonnées de la personne-ressource**

Uponor Inc.  
5925 148th Street West  
Apple Valley, MN 55124  
T 800.321.4739  
F 952.891.2008

Uponor Ltd.  
6510 Kennedy Road  
Mississauga, ON L5T 2X4  
T 888.594.7726  
F 800.638.9517