

# Adaptateurs pour raccord en cuivre de type QS

## Renseignements sur le projet

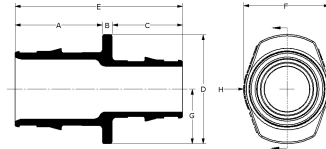
|                             |                     |
|-----------------------------|---------------------|
| Nom du poste :              | Lieu :              |
| Ingénieur :                 | Date de soumission: |
| Entrepreneur :              | Présentée par:      |
| Représentant du fabricant : | Approuvé par :      |

## Données techniques

|                         |  |
|-------------------------|--|
| Material                | Brass  |
| Temp/pressure ratings   | 73 °F (23 °C) at 160 psi (11 bar)<br>180 °F (82 °C) at 100 psi (6.9 bar)<br>200 °F (93 °C) at 80 psi (5.5 bar) |
| Prop 65 label required? | Yes  |

## Informations sur le produit et utilisation de l'application

The Uponor QS-style Copper Adapters, combined with the appropriate QS-style Fitting Assembly, transition Wirsbo hePEX™ tubing to 1/2", 3/4" or 1" copper pipe in hydronic heating applications



| Nom de la pièce  | Numéro de pièce | A [inch] | B [inch] | C [inch] | D [inch] | E [inch] | F [inch] | G [inch] | H [inch] | Weight per UOM [lbs/UOM] | End Type 1     |
|--|-----------------|----------|----------|----------|----------|----------|----------|----------|----------|--------------------------|----------------|
| QS-style Copper Fitting Adapter, R20 x 1/2" Copper                                 | A4342050        | 0.601    | 0.275    | 0.512    | 1.224    | 1.388    | 1.063    | 0.612    | 0.531    | 0.15                     | ISO 228-G 3/4" |
| QS-style Copper Fitting Adapter, R20 x 3/4" Copper                                 | A4342075        | 0.85     | 0.275    | 0.512    | 1.224    | 1.637    | 1.063    | 0.612    | 0.531    | 0.18                     | ISO 228-G 3/4" |
| QS-style Copper Fitting Adapter, R25 X 1" Copper (for 3/4" and 5/8" tubing only)   | A4342510        | 0.97     | 0.299    | 0.658    | 1.585    | 1.927    | 1.375    | 0.792    | 0.687    | 0.29                     | ISO 228-G 1"   |
| QS-style Copper Fitting Adapter, R25 X 3/4" Copper (for 3/4" and 5/8" tubing only) | A4342575        | 0.935    | 0.3      | 0.657    | 1.557    | 1.892    | 1.375    | 0.778    | 0.687    | 0.28                     | ISO 228-G 1"   |

| Nom de la pièce  | Numéro de pièce | End Type 2 |
|--|-----------------|------------|
| QS-style Copper Fitting Adapter, R20 x 1/2" Copper                                 | A4342050        | Sweat 1/2" |
| QS-style Copper Fitting Adapter, R20 x 3/4" Copper                                 | A4342075        | Sweat 3/4" |
| QS-style Copper Fitting Adapter, R25 X 1" Copper (for 3/4" and 5/8" tubing only)   | A4342510        | Sweat 1"   |
| QS-style Copper Fitting Adapter, R25 X 3/4" Copper (for 3/4" and 5/8" tubing only) | A4342575        | Sweat 3/4" |

## L'installation

The corresponding compression fitting threads onto the R20 or R25 thread to adapt to copper. For additional information, refer to the Uponor Radiant Floor Heating Installation Handbook.

## Applications connexes

- Radiant Heating and Cooling Systems
- Permafrost Protection Systems
- Turf Conditioning Systems

## Les codes

## Normes

## Annonces

- ASTM F877|R20:

## Notes de bas de page

## Coordonnées de la personne-ressource

|   |  |  |
|---|--|--|
| - | <p>Uponor Inc.<br/>5925 148th Street West<br/>Apple Valley, MN 55124<br/>T 800.321.4739<br/>F 952.891.2008</p> | <p>Uponor Ltd.<br/>6510 Kennedy Road<br/>Mississauga, ON L5T 2X4<br/>T 888.594.7726<br/>F 800.638.9517</p> |
|---|--|--|